



125th
ANNIVERSARY
KYOTO UNIVERSITY

京都大学

www.kyoto-u.ac.jp/en

KYOTO UNIVERSITY 2022-2023

KYOTO UNIVERSITY

2022-2023



Contents

Kyoto University Mission Statement	2
Message from the President	3
Kyoto University 125 th Anniversary	4
History of Kyoto University	5
Award-Winning Research	6
Kyoto University at a Glance	7
Global Engagement	9
International Partners/Overseas Offices and Facilities	9
Strategic Partnerships (SPs)	11
On-site Laboratory Initiative	12
Kyoto University International Undergraduate Program (Kyoto iUP)	13
Double and Joint Degree Programs	14
Student Mobility	15
Industry-Academia Collaboration	16
Developing the “KyotoU Model” and Promoting Innovation through Industry-Academia Collaboration	16
General Information: Departments	17
Undergraduate Faculties/Graduate Schools	17
Kyoto University International Undergraduate Program (Kyoto iUP)	18
English-Taught Undergraduate Program/English-Taught Graduate Programs	18
Research Institutes	19
Centers and Other Organizations	20
General Information: Core Facilities	21
Distinctive Education and Research Facilities	21
General Information: Support Services	23
Support Services for International Researchers and Students	23
General Information: Campuses and Facilities	25
Campuses	25
Facilities throughout Japan	26
Kyoto: Japan’s Cultural Heartland	27
For More Information	29

Cover: “Illustration of a Chinese Market in Nagasaki” (*Kiyō Tōjin Yashiki Zukei*). Kyoto University Library collection, artist unknown.

Dating from the late Edo period (circa 19th century), this painting skillfully and vividly depicts a scene from Nagasaki in the west of Japan, and is a valuable source of information about the society and customs of the period.

During the Edo period (17th–19th century), Chinese merchants were housed in *tōjin yashiki* (Chinese residences) as a measure by the shogunate to prevent smuggling. The painting depicts stalls set up in a plaza within one such residence selling daily necessities, such as fish, vegetables, and firewood, as well as samples of Japanese goods for export, such as lacquerware and Imari porcelain, which indicates that it was a market for the Chinese residents. The Chinese people in the illustration include shipowners, sailors, and servants. The Japanese people in the painting are all merchants, except for the two government officials wearing formal *haori* jackets and loose *hakama* trousers.

Kyoto University Mission Statement

Kyoto University states its mission to sustain and develop its historical commitment to academic freedom and to pursue harmonious coexistence within the human and ecological community on this planet.

Research

Kyoto University will generate world-class knowledge through freedom and autonomy in research that conforms with high ethical standards.

As a university that comprehends many graduate schools, faculties, research institutes and centers, Kyoto University will strive for diverse development in pure and applied research in the humanities, sciences and technology, while seeking to integrate these various perspectives.

Education

Within its broad and varied educational structure, Kyoto University will transmit high-quality knowledge and promote independent and interactive learning.

Kyoto University will educate outstanding and humane researchers and specialists, who will contribute responsibly to the world’s human and ecological community.

Relationship with Society

As a university committed to a broad social engagement, Kyoto University will encourage cooperation with local and national society, and will disseminate knowledge informed by the ideals of freedom and peaceful coexistence.

As an international institution, Kyoto University will promote foreign academic exchange and thereby strive to contribute to the well-being of the world.

Administration

In order to enhance the free development of learning, Kyoto University will pay due respect to the administrative independence of each of its component institutions, while promoting cooperation among them.

Kyoto University will conduct its administration with regard for the environment and respect for human rights and will be accountable to society at large.

Message from the President



Since its foundation in 1897, Kyoto University has cultivated a spirit of creativity and originality in its students and researchers through an institutional philosophy of academic freedom founded on frank and open dialogue. From its earliest days, the university has placed great importance on steadily increasing its international presence—expanding its partnerships and making a meaningful contribution to the international community.

Kyoto University's international exchange and collaboration is pursued through close partnerships with institutions overseas, student and researcher exchange programs, interdisciplinary research collaboration, and a multitude of other activities. The creative and groundbreaking accomplishments of the university's researchers continue to garner international recognition in the form of prestigious accolades, such as the Nobel Prize, Fields Medal, and other prestigious awards.

One unique feature of Kyoto University's syllabus is that it provides our undergraduate students with opportunities to experience innovative and advanced research right from their first-year of study—an approach rooted in the university's long-standing tradition of fostering a spirit of adventurous self-reliance and independence in its students, as well as stressing the importance of hands-on interaction and dialogue.

In 2017, Kyoto University was assigned by the Japanese government as one of the first Designated National Universities (DNU). DNU status has enabled the university to implement even more ambitious initiatives in the areas of university management, education, and research, and it positions Kyoto University at the forefront of a new era of international academic exchange and collaboration. In the field of industry-government-academia collaboration, the university has established a new "KyotoU Model," which includes four university subsidiary companies that make diverse use of the university's advanced knowledge "seeds" to further engage with and contribute to society.

Currently, multiple complex issues threaten the health and lives of all people on Earth. Such issues include the unexpectedly rapid worsening of climate change, large-scale natural disasters, and environmental degradation, as well as the escalation of international conflicts, widening economic disparity, and the international spread of infectious diseases, such as the novel coronavirus. We must now reaffirm our commitment to Kyoto University's mission—we must earnestly and determinedly seek solutions to the multifaceted and complex issues being faced around the world, and consistently share our progress with society.

2022 marks the 125th anniversary of Kyoto University's founding. Throughout its history the university's pioneering spirit of creativity and diversity has borne much fruit, but to maintain the production of such nourishing fruit in the future, we must plant seedlings and cultivate them properly. By firmly linking the university's chain of achievements throughout the past 125 years to its future, we will continue to make the utmost efforts to contribute to society through the creation of new intellectual value and the cultivation of outstanding human resources.

Nagahiro Minato
September 2022

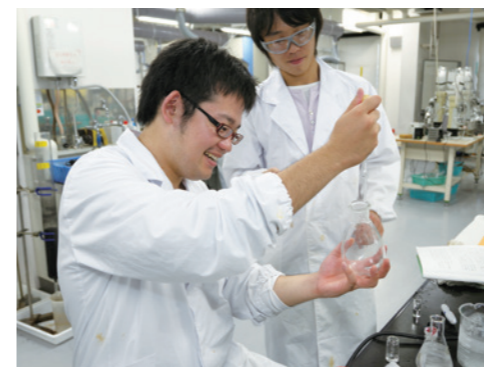
Kyoto University 125th Anniversary

Kyoto University is implementing several projects to commemorate its 125th anniversary, which aim to enhance its international competitiveness, strengthen its research capabilities, and promote social engagement. The university is also planning to establish student support facilities to provide an internationally appealing campus environment in the post-COVID-19 era.



Enhancing international competitiveness "Cultivating global leaders"

Kyoto University is an internationally-oriented institution that welcomes diverse cultures and thought, and encourages academic freedom. Maintaining that institutional culture, the university will foster the next generation of resilient global leaders.



Strengthening and expanding research endeavors

"Cultivating a new generation of creative human capital who can tackle challenging problems"

Kyoto University provides researchers with a rich environment conducive to diverse innovation and creativity. It has produced eleven Nobel laureates and numerous other recipients of prestigious international awards. Its scholars have pioneered new frontiers in diverse academic fields, including primatology and Kitaro Nishida's Kyoto School of philosophy. The university will maintain this tradition of cultivating creative young researchers.



Promoting social engagement "Creation of new values to benefit society"

Through creative dialogue and proactive collaboration with diverse stakeholders in Japan and overseas, Kyoto University will create new values based on the knowledge it has developed and apply those achievements for the benefit of society.

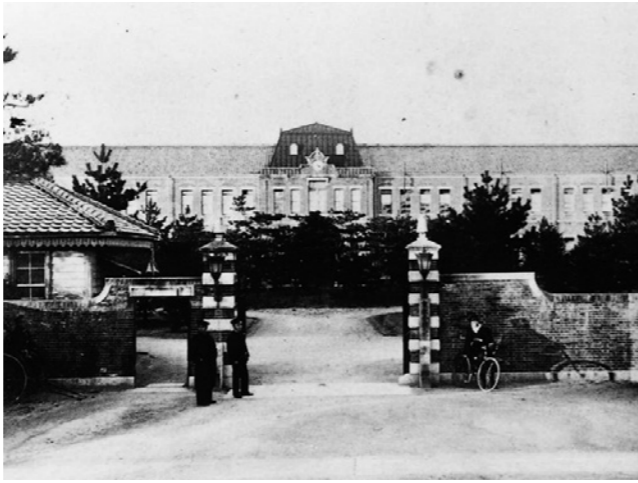
History of Kyoto University

Kyoto University was established in 1897 as Japan's second imperial university. It is located in the historic city of Kyoto, which flourished as the nation's capital for over a thousand years until that status was transferred to Tokyo in the wake of the Meiji Restoration. Even after the relocation of the capital, Kyoto continued to be a hub of culture and technology. Japan's first elementary school and girls' school were opened there, and it was the location of the country's first commercial hydroelectric plant and first streetcars. It was within that milieu of cultural, technological, and industrial advancement that Kyoto University was established.

During its early period, Kyoto University developed various new approaches to education and research, including small-group seminars that emphasize interaction between students and instructors, incorporating thesis submission as a graduation requirement, and providing students with increased freedom in selecting their study subjects as a way to enhance motivation and encourage creativity. These innovative approaches pioneered by the university were eventually adopted as standard practices in Japanese higher education.

It was also in the early phase of its development that Kyoto University firmly grasped the importance of university autonomy. Academic freedom is essential to the scholarly quest for the truth—a goal common to all universities—and university autonomy is essential in ensuring academic freedom. Kyoto University was the first university in Japan to implement a structure whereby its faculty were free from external interference.

Through its pioneering approach to education and research, Kyoto University has cultivated some of Japan's finest minds and made significant contributions to the advancement of scholarship and science. Numerous winners of major international awards are affiliated with the university, such as renowned physicist Hideki Yukawa, Japan's first Nobel laureate. To this day, the university is known throughout Japan and around the world for its unique culture of academic freedom, and for being at the vanguard of cutting-edge research.



The view through the main gates (circa 1900)



The university library in the Meiji period (circa 1909)



Students in front of the university clock tower (circa 1928)

Award-Winning Research

Kyoto University is one of the most respected research universities in Asia. This is testified by the accolades conferred upon its researchers past and present.

Nobel Prize



1949
Physics
Hideki Yukawa



1965
Physics
Sin-itiro Tomonaga



1981
Chemistry
Kenichi Fukui



1987
Physiology or Medicine
Susumu Tonegawa



2001
Chemistry
Ryoji Noyori



2008
Physics
Makoto Kobayashi



2008
Physics
Toshihide Maskawa



2012
Physiology or Medicine
Shinya Yamanaka



2014
Physics
Isamu Akasaki



2018
Physiology or Medicine
Tasuku Honjo



2019
Chemistry
Akira Yoshino



Dr. Tasuku Honjo, distinguished professor and deputy director-general of the Kyoto University Institute for Advanced Study (KUIAS), receiving the 2018 Nobel Prize in Physiology or Medicine.



Dr. Akira Yoshino, honorary fellow of Asahi Kasei Corporation, professor at Meijo University, and alumnus of Kyoto University, receiving the 2019 Nobel Prize in Chemistry.

Fields Medal

1970	Mathematics	Heisuke Hironaka
1990	Mathematics	Shigefumi Mori

Gauss Prize

2006	Mathematics	Kiyoshi Ito
------	-------------	-------------

Lasker Award

1987	Basic Medical Research	Susumu Tonegawa
1989	Basic Medical Research	Yasutomi Nishizuka
1998	Basic Medical Research	Yoshio Masui
2009	Basic Medical Research	Shinya Yamanaka
2014	Basic Medical Research	Kazutoshi Mori

Japan Prize

2004	Chemical Technology for the Environment	Kenichi Honda
2005	Information and Media Technology	Makoto Nagao
2005	Cell Biology	Masatoshi Takeichi

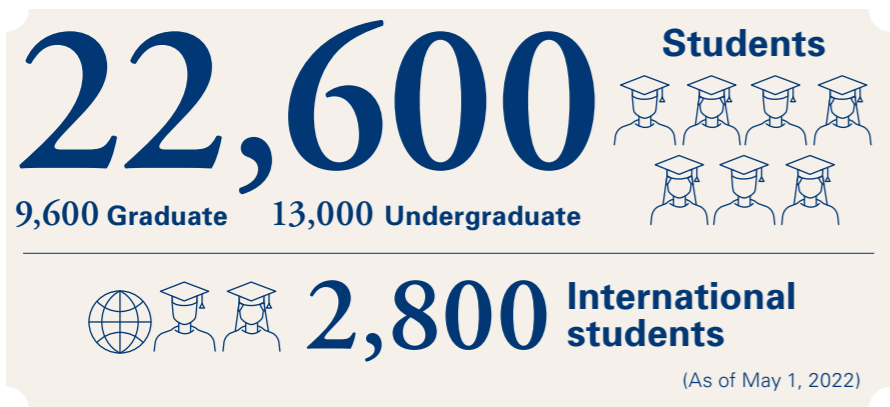
Kyoto Prize

1995	Basic Sciences	Chushiro Hayashi
1998	Basic Sciences	Kiyoshi Ito
2004	Advanced Technology	Alan Curtis Kay
2009	Advanced Technology	Isamu Akasaki
2010	Advanced Technology	Shinya Yamanaka
2013	Basic Sciences	Masatoshi Nei
2016	Advanced Technology	Takeo Kanade
2016	Basic Sciences	Tasuku Honjo
2018	Mathematical Sciences	Masaki Kashiwara

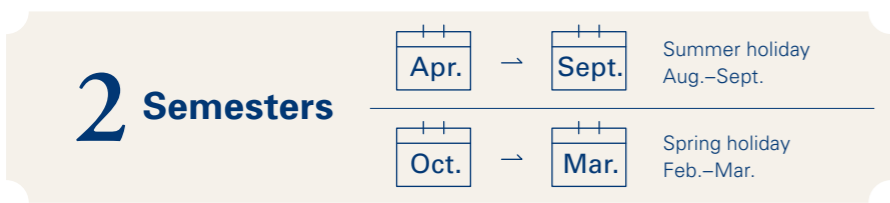
Chern Medal

2018	Mathematics	Masaki Kashiwara
------	-------------	------------------

Kyoto University at a Glance



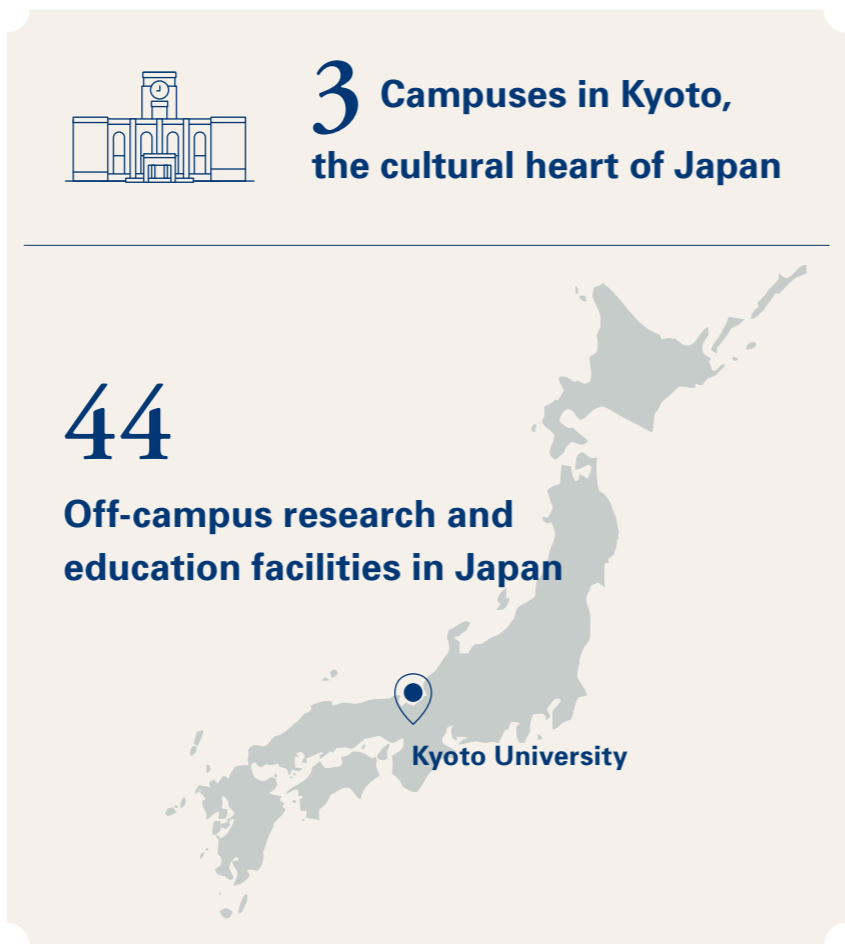
See Facts and Figures pp. 2, 18–19



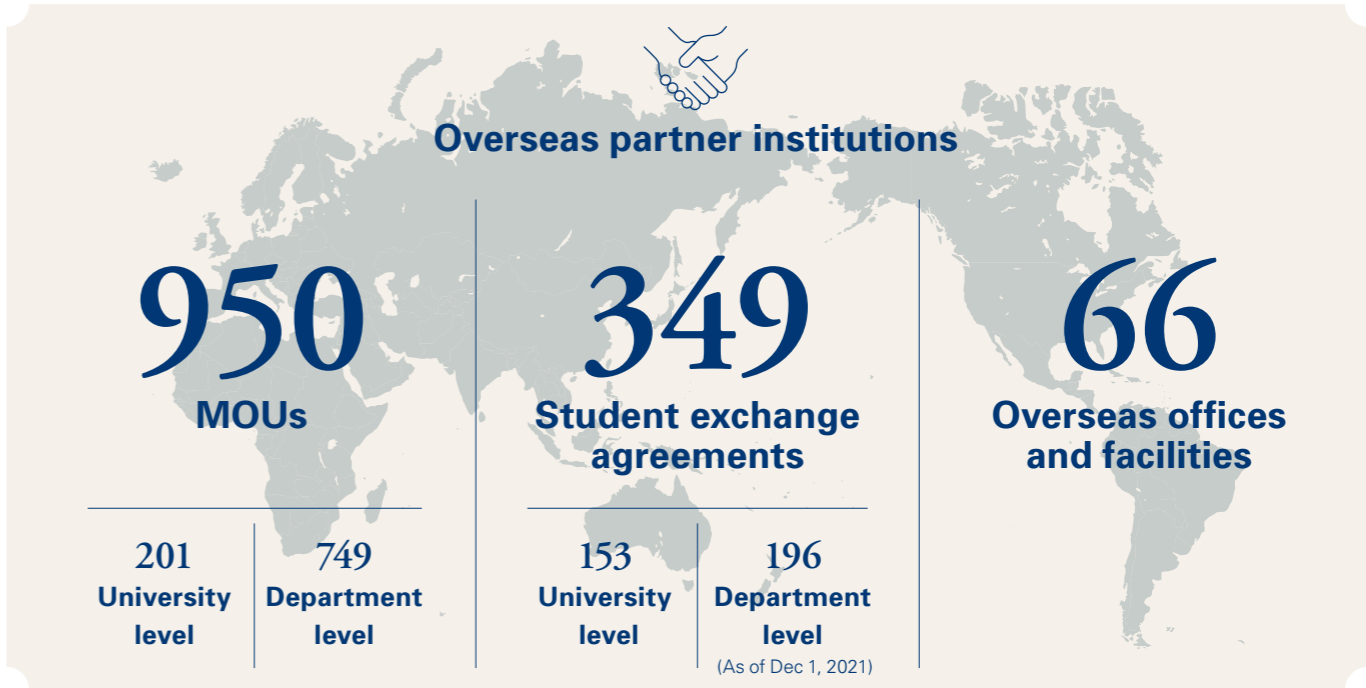
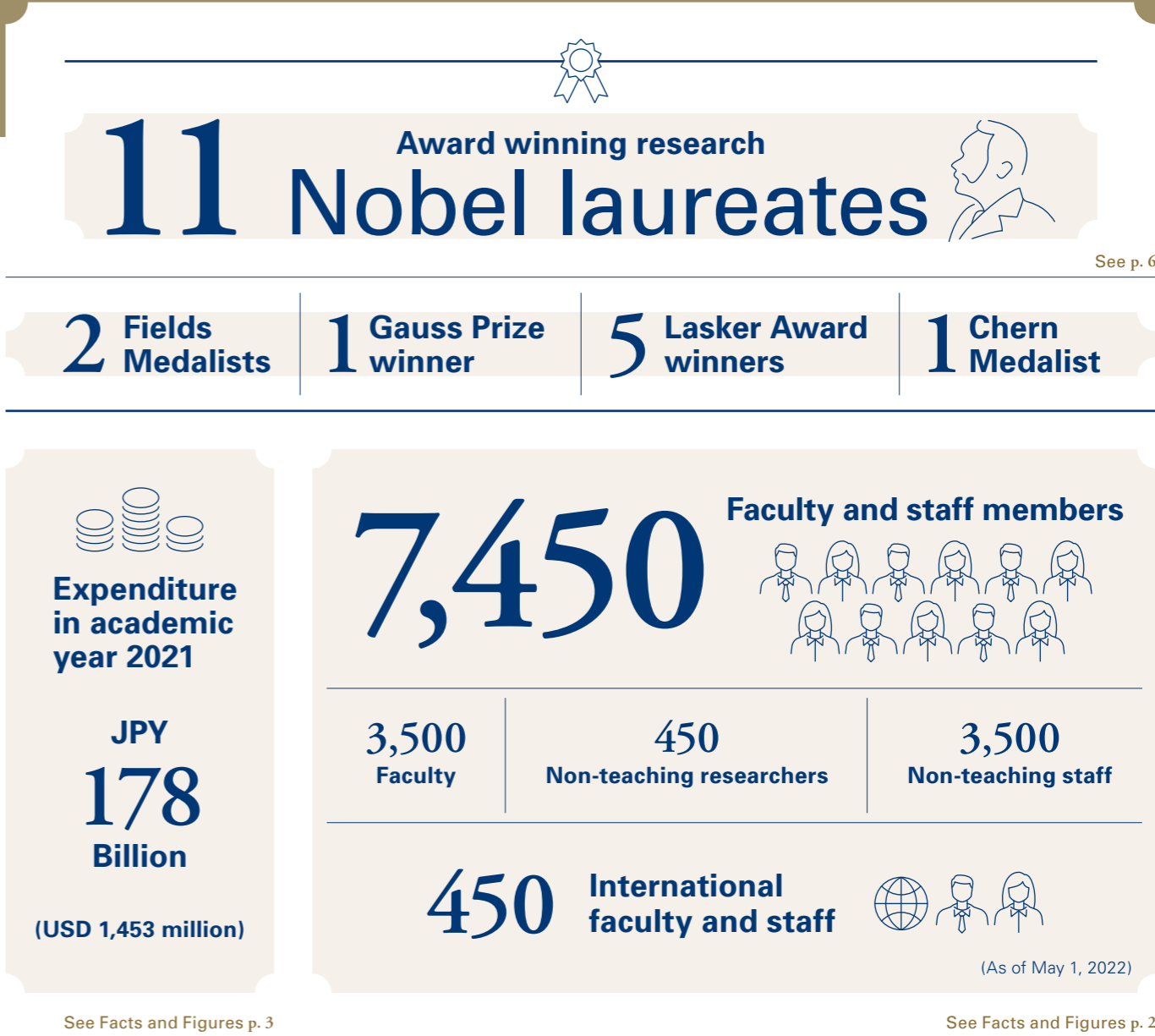
See pp. 17–20



See p. 5



See pp. 25–26



(As of April 1, 2022)

Global Engagement

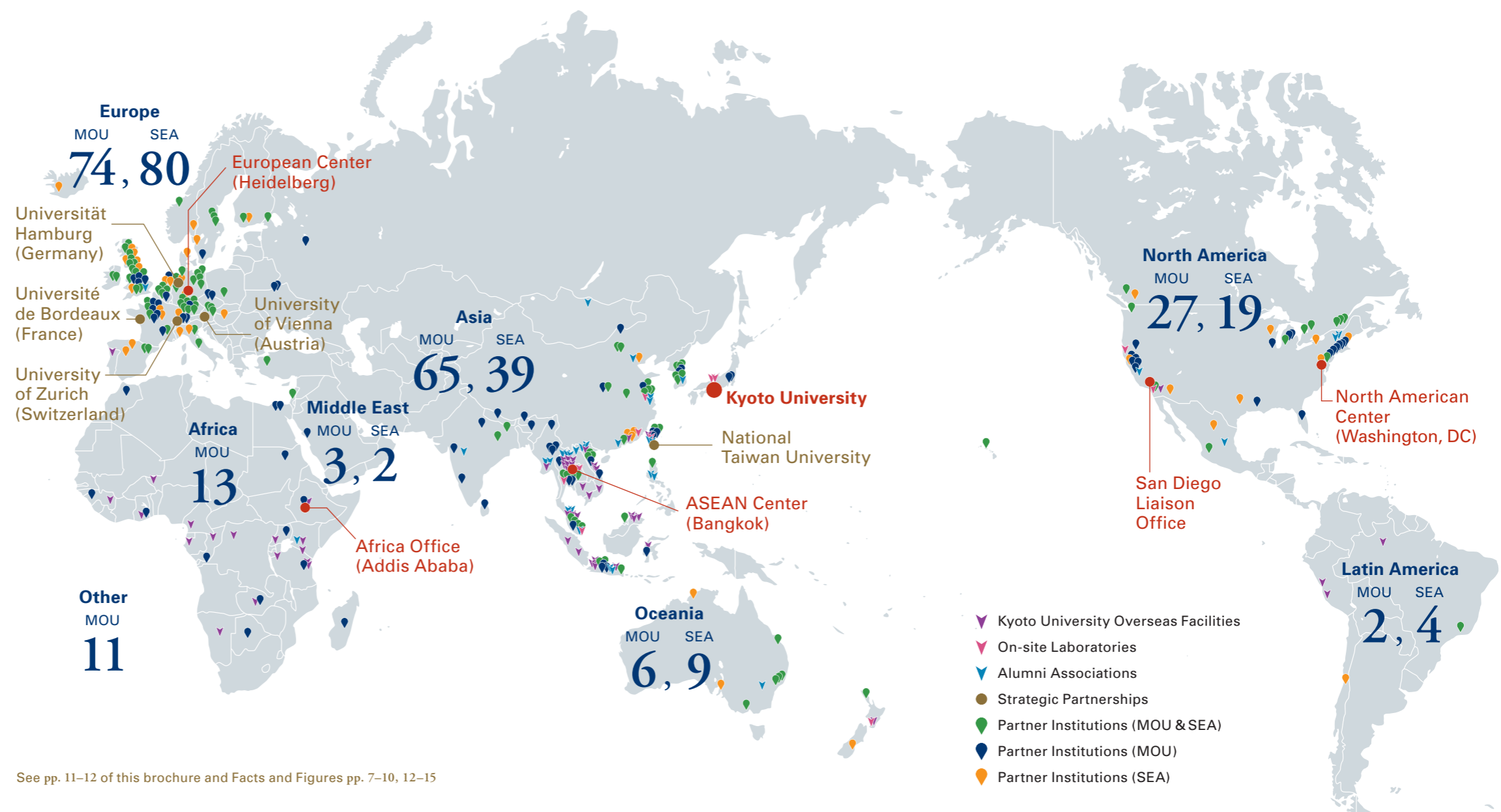
International Partners/Overseas Offices and Facilities

Kyoto University connects with the global community in diverse ways: through academic cooperation and partnerships, its overseas facilities, multilateral networks, and its alumni associations in various countries. International partners are an essential asset to the university, contributing to the development of its research and education endeavors and enriching its activities with multicultural diversity.

Research fieldwork sites at locations around the world are also a part of the university's international network, providing a foundation for local engagement and cooperation.

The university's overseas offices serve as its bridges to key regions around the world, implementing international outreach initiatives that capitalize on the unique qualities of those regions and providing support for researchers stationed overseas. Currently, the university has overseas centers in Heidelberg (Germany), Bangkok (Thailand), and Washington, DC (USA).

Kyoto University is itself an international hub where researchers from around the world gather to share and disseminate knowledge, promote research and technology transfer, and above all, connect with people who share their passions.



www.oc.kyoto-u.ac.jp/agreement/en/

See pp. 11–12 of this brochure and Facts and Figures pp. 7–10, 12–15

Overseas Offices and Facilities

66

Strategic Partnerships

5

On-site Laboratories

11

University-level Memoranda (MOU)

201

Overseas Alumni Associations

31

Student Exchange Agreements (SEA)

153

(As of April 1, 2022)

Alumni Associations

Kyoto University maintains an expanding network of former students, researchers, and academic staff through its alumni associations. Currently, there are 130 alumni associations in Japan and overseas.

The university promotes networking opportunities among its alumni around the world, and each regional association also plays a key role—bringing together people with shared personal experiences and a shared affection for their alma mater.

www.kyoto-u.ac.jp/en/alumni



Strategic Partnerships (SPs)

What? What are “Strategic Partners?”

“Strategic Partners” are institutions with which Kyoto University seeks to build on existing collaboration efforts to further develop interdisciplinary research collaboration, collaboration in new fields, and personnel mobility. The partnerships are initiated through executive-level relations between Kyoto University and world-leading institutions with which cooperation and exchange agreements have already been concluded.

Why? Purposes and Expected Outcomes

- 1. Further development of sustained research collaboration, with a focus on interdisciplinary research and research in new fields.
- 2. Increased opportunities to acquire external funding for international research collaboration.
- 3. Development of bilateral collaboration into multilateral collaboration.
- 4. Facilitation of comprehensive cooperative activities with the partners, including educational collaboration and student and personnel mobility.
- 5. Enhancement of international competitiveness.

How? Strategic Partnership Activities to Date

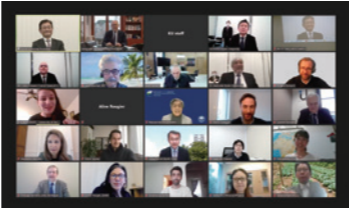
Activities Before Strategic Partnership Since 2000: Kyoto University Int'l Symposium					Strategic Partnership	2019	2020	2021	2022
Université de Bordeaux	2014	2015	2017	2019	Conclusion of SP MOU	4th Symposium			
	1st Symposium & MOU	2nd Symposium & SEA	3rd Symposium						
Universität Wien	1993	1997	1998–2017	2018	2019	Conclusion of SP MOU / 2nd Joint Workshop			Joint research funding
	MOU	SEA	Researcher Exchange Program	Workshop					
University of Zurich	2013	2014	2016	2019	2020	Conclusion of SP MOU	Joint research funding	Joint research funding	Research funding by KU
	1st Symposium & MOU	SEA	2nd Symposium	Workshop					
Universität Hamburg	2016	2017	2018	2020	Conclusion of SP MOU	Joint research funding	Joint research funding	Joint research funding	
	Workshop	1st Symposium & MOU+SEA	2nd Symposium						
National Taiwan University	2005	2013	2014	2014	2020	Conclusion of SP MOU	SP Matching Event	Joint research funding	
	MOU+SEA	1st Symposium	Faculty Exchange Program	2nd Symposium					



Joint Workshop in Medicine with the University of Zurich (Nov. 2019)



Conclusion of the SP MOU with National Taiwan University (Aug. 2020)



4th International Symposium with Université de Bordeaux: “Establishing Trilateral Collaboration between France, Japan, and Africa” (Feb. 2021)

On-site Laboratory Initiative

“On-site laboratories” are locally managed laboratories established collaboratively by Kyoto University faculties/departments and overseas partners. The initiative aims to promote world-leading advanced research, increase its recruitment of talented international students, and expand its collaboration with industrial partners. Through these efforts Kyoto University seeks to strengthen the institutional infrastructure that enables it to be a key player in international academia and ranked among the world’s leading universities. Eleven on-site laboratories have been established to date. The laboratories’ promotion of new international research collaboration and collaboration with industry has a positive ripple effect on the university’s education efforts, including the launch of new double degree programs with partner universities.

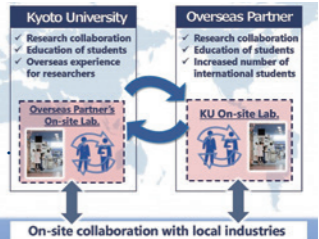
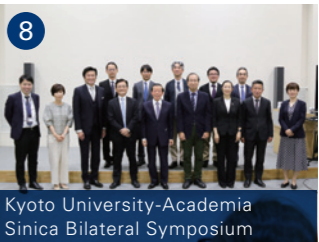
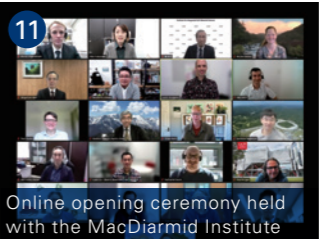
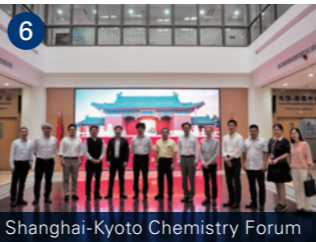
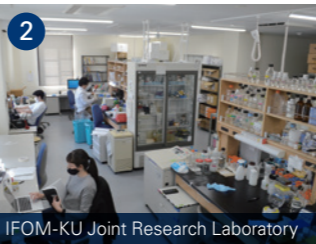
www.kyoto-u.ac.jp/en/about/operation/designated/on-site-laboratories



On-site Laboratories

- 1 Kyoto University Research Center San Diego, USA
- 2 IFOM-KU Joint Research Laboratory, Japan/Italy
- 3 Kyoto University-Tsinghua University Cooperative Research and Education Center for Environmental Technology, China
- 4 Kyoto University On-site Laboratory at Mahidol University for Educational and Research Collaboration in Environmental Studies, Thailand
- 5 Smart Materials Research Center, Thailand
- 6 Kyoto University Shanghai Lab, China
- 7 iPS Cell Research Center at Gladstone Institutes, USA
- 8 Center for Integrated Biosystems, Taiwan
- 9 Quantum Nano Medicine Research Center, Japan/USA
- 10 Laboratory for Green Porous Materials, Singapore
- 11 Center for Integrated Data-Material Sciences (iDM), New Zealand

See Facts and Figures pp. 12–13

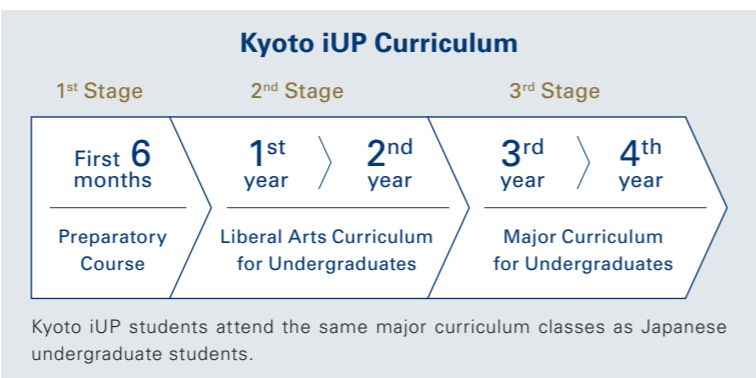
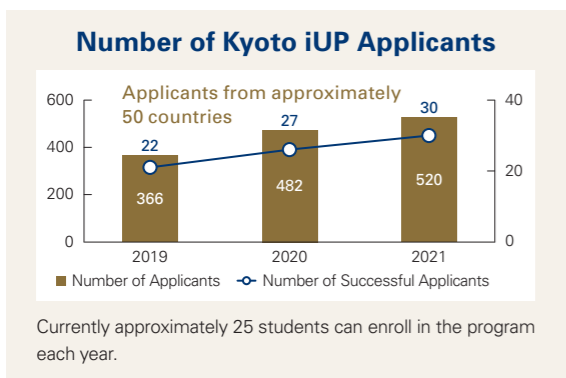


Kyoto University International Undergraduate Program (Kyoto iUP)

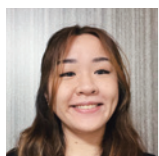
The Kyoto University International Undergraduate Program (Kyoto iUP) has been designed to minimize the language and financial hurdles that often prevent talented international students from pursuing study, and ultimately careers, in Japan. It is a 4.5-year international scholarship program comprising a six-month preparatory course followed by four years of undergraduate study. A key feature of the program is that no Japanese language proficiency is required at the outset, as the program provides an intensive Japanese language component. Admission and tuition fees are exempted, and students receive a monthly scholarship of up to JPY 120,000 for the 4.5 years of the program.



In the first two years of the main program (following the six-month preparatory course), students take liberal arts courses and fundamental courses in their respective majors, which are taught in English and/or Japanese. The final two years of the program focus on specific subjects in the students' majors, which are taught mainly, or exclusively, in Japanese. The international iUP students attend the same classes as regular Japanese undergraduate students, which imbues the classes with a rich multicultural component. Upon graduation, students are awarded a bachelor's degree in their chosen major. Companies and organizations in the private sector provide various forms of support for the program, including support for student scholarships.



Student Voices



Yu Qing Chang

Affiliation: 1st year of bachelor course, Faculty of Economics
Country of Origin: Singapore

To me, there are three main points that make Kyoto iUP an exceptionally attractive program. Firstly, it comes with a scholarship that pays full tuition fees, and it also provides a monthly stipend so that one can focus on one's studies without worry. Secondly, I believe that the Kyoto iUP program gives students a sense of community, as one has the other iUP students, seniors who have walked the same road, as well as an extremely helpful team of staff and professors. Lastly, the iUP program provides comprehensive language support, with a six-month preparatory course before you begin your undergraduate studies, and professors and mentors that will guide you in your language learning journey.



Irsyad Zahid Kamil Uno

Affiliation: 1st year of bachelor course, Undergraduate School of Architecture, Faculty of Engineering
Country of Origin: Indonesia

I chose to study in Japan because I wanted to know and learn about Japanese architecture. I am also interested in structural engineering—how Japan makes its buildings durable and safe from disasters, yet maintains its own unique touch. One benefit of the iUP program is that, because international and Japanese students study together, we have the opportunity to make contacts, share ideas, and broaden our horizons. We are also connected with other iUP students from different countries, and can become friends with them. The guidance iUP gives us also prevents us from drifting aimlessly, and instead pushes us to focus and find a purpose. In my opinion, those experiences are unobtainable elsewhere.

Double and Joint Degree Programs

Kyoto University offers double and joint degree programs in diverse fields that provide students with advanced value-added study opportunities that cannot be provided by a single university.



Graduate School of Letters

Transcending national and cultural borders to open the door to a transcultural research journey.

Joint master's degree: Heidelberg University

Double doctoral degree: École des Hautes Études en Sciences Sociales (EHESS)



Graduate School of Economics

Global markets, local creativity—cultivating world-class researchers in the field of economics and business.

Double doctoral degree: University of Glasgow

Joint master's degree: University of Glasgow, University of Barcelona



Graduate School of Science

Pursuing a new mathematical science field related to quantum information theory (QIT).

Double doctoral degree: École Normale Supérieure de Lyon



Graduate School of Medicine

Training data scientists who will lead the future healthcare, disease prevention, and therapy development through multi-dimensional analysis of the big data related to human life.

Joint doctoral degree: McGill University



Graduate School of Medicine School of Public Health

Providing students with advanced knowledge and skills to conduct global research in the field of public health.

Double master's degrees (professional): National Taiwan University, Chulalongkorn University, Mahidol University



Graduate School of Engineering

Addressing global and regional environmental issues in a multi-cultural and multi-linguistic environment.

Double master's degree: Tsinghua University



Graduate School of Agriculture

Agricultural sciences for the global future of life, food, and the environment.

Double master's degrees: IPB University (Bogor Agricultural University), Gadjah Mada University, Institut Teknologi Bandung, National Taiwan University, Kasetsart University, Mahidol University



Graduate School of Energy Science

Global challenges for secured energy, carbon neutrality, sustainability, and affordability.

Double master's degrees: University of Malaya, Chulalongkorn University, King Mongkut's University of Technology Thonburi
Double doctoral degree: Zhejiang University, Université de Bordeaux



Graduate School of Global Environmental Studies

Establishing a new field of global environmental sustainability studies that combines the natural sciences, social sciences, and the humanities.

Double master's degrees: Mahidol University, IPB University (Bogor Agricultural University), Tsinghua University



Graduate School of Management

Adding a new dimension to business management studies to cultivate global business leaders.

Double professional degrees: National Taiwan University, Cornell University
Double master's degree: Universität Hamburg

Student Mobility

Kyoto University provides a number of short-term student mobility programs (both incoming and outgoing). The following are some selected examples.

Short-Term Inbound Program



www.z.k.kyoto-u.ac.jp/summer-spring-program/

Kyoto Summer/Spring Program

The Kyoto Summer/Spring Program is an annual short-term program open to both students from international partner institutions and domestic Kyoto University students. The program is held jointly by the Kyoto University Institute for Liberal Arts and Sciences (ILAS) and the Kyoto University Asian Studies Unit (KUASU). Students can select classes taught mainly in English or mainly in Japanese, enabling them to experience Kyoto University's cutting-edge research activities while deepening their understanding of Japanese culture, language, and society. For the past two years, the program has been conducted online and enrollment numbers have increased. A new "living with COVID-19" format is about to be implemented, including the resumption of in-person classes.



The Amgen Scholars Program

The Amgen Scholars Program is a short summer program that provides scholarships for undergraduate students from around the world to engage in diverse cutting-edge science research at leading academic institutions, including Kyoto University. The program aims to foster the next generation of innovators by providing increased opportunities for students pursuing careers in science.

Short-Term Outbound Program

ILAS Seminar (Overseas)



The ILAS Seminar (Overseas) provides students with the opportunity to engage in hands-on training overseas under the close guidance of faculty members, and

to learn about the history, geography, and culture of the destination country or region.

Kingfisher Global Leadership Program



The Kingfisher Global Leadership Program is a US study abroad program for graduate and undergraduate students pursuing international careers. The program provides

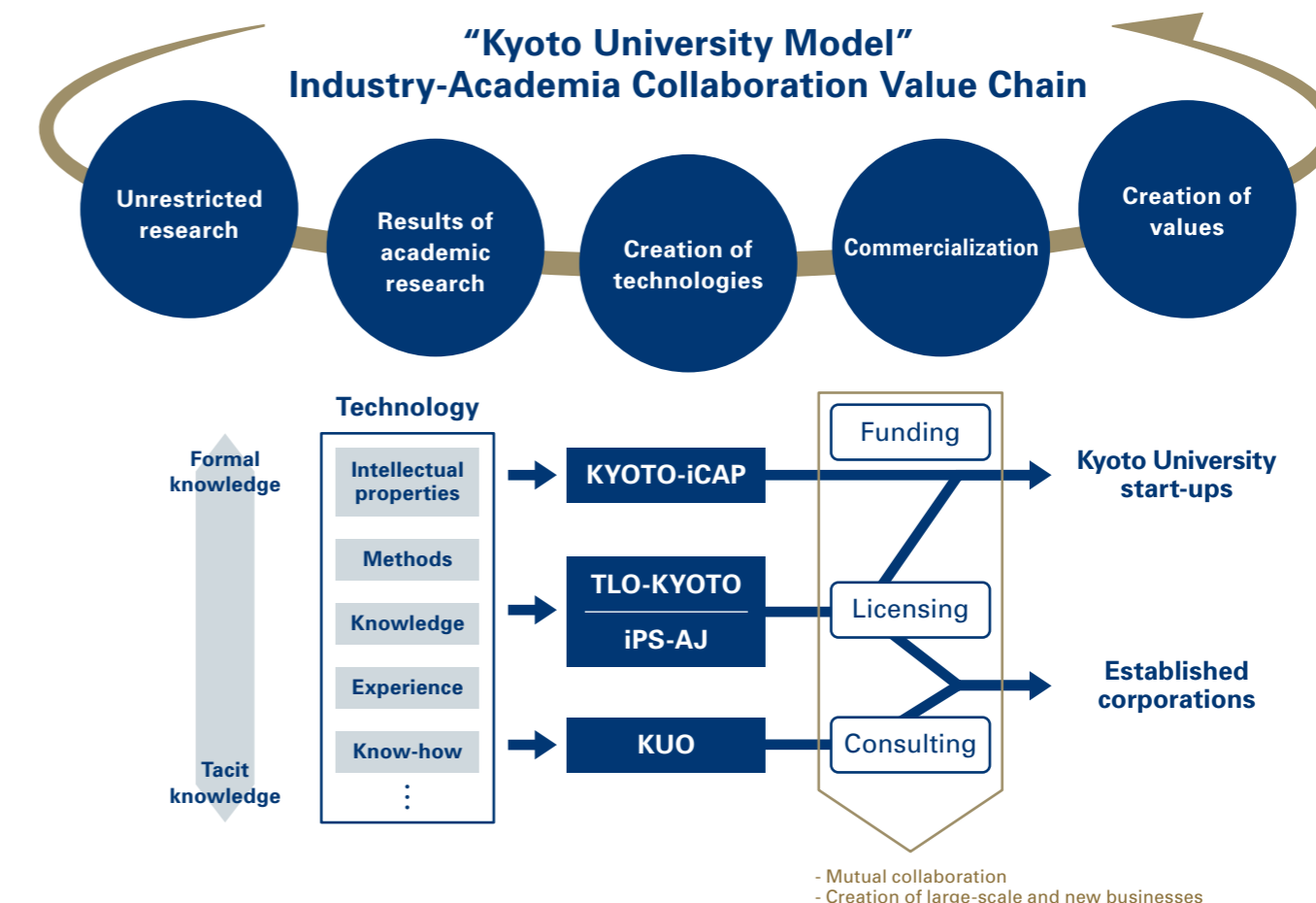
students with opportunities to participate in lectures and discussions, and to visit international organizations (such as the World Bank, NASA, and the National Institutes of Health), as well as local companies in Washington, DC.

Developing the "KyotoU Model" and Promoting Innovation through Industry-Academia Collaboration

In accordance with its institutional mission and management policies, Kyoto University has developed the "KyotoU Model" for industry-government-academia collaboration. The KyotoU Model seeks to establish new large-scale businesses through practical cooperation between the **Office of Society-Academia Collaboration for Innovation (SACI)** and four university subsidiary companies: **Kyoto University Original Co., Ltd.** (consulting/training and education), **TLO-KYOTO Co., Ltd.** (technology transfer), **iPS Academia Japan, Inc.** (technology transfer), and **Kyoto University Innovation Capital Co., Ltd.** (incubation/start-up support).

The KyotoU Model aims to deliver the knowledge generated by Kyoto University to society, maximize its value, and generate profits to vitalize education and research.

Office of Society-Academia Collaboration for Innovation
www.saci.kyoto-u.ac.jp/en



The Kyoto University Group

Main subsidiary companies (directly financed)

TLO-KYOTO
[Technology Transfer]
www.tlo-kyoto.co.jp/english

iPS-AJ
[Technology Transfer]
www.ips-cell.net/e/

Kyoto University Original
[Consulting/Training and Education]
www.kyodai-original.co.jp/?page_id=576



















KYOTO-iCAP
[Incubation·Start-Up Support]
www.kyoto-unicap.co.jp/en

Undergraduate Faculties and Graduate Schools

Undergraduate Faculties

 Integrated Human Studies 総合人間学部 www.h.kyoto-u.ac.jp/index_e.php	 Economics 経済学部 www.econ.kyoto-u.ac.jp/en	 Engineering 工学部 www.t.kyoto-u.ac.jp/en
 Letters 文学部 www.bun.kyoto-u.ac.jp/en	 Science 理学部 www.sci.kyoto-u.ac.jp/en	 Agriculture 農学部 www.kais.kyoto-u.ac.jp/english
 Education 教育学部 www.educ.kyoto-u.ac.jp/en	 Medicine 医学部 www.med.kyoto-u.ac.jp/en	
 Law 法学部 law.kyoto-u.ac.jp/english	 Pharmaceutical Sciences 薬学部 www.pharm.kyoto-u.ac.jp/en	

Graduate Schools


 Letters 文学研究科 www.bun.kyoto-u.ac.jp/en	 Pharmaceutical Sciences 薬学研究科 www.pharm.kyoto-u.ac.jp/en	 Informatics 情報学研究科 www.i.kyoto-u.ac.jp/en
 Education 教育学研究科 www.educ.kyoto-u.ac.jp/en	 Engineering 工学研究科 www.t.kyoto-u.ac.jp/en	 Biostudies 生命科学研究科 www.lif.kyoto-u.ac.jp/e
 Law 法学研究科 law.kyoto-u.ac.jp/english	 Agriculture 農学研究科 www.kais.kyoto-u.ac.jp/english	 Advanced Integrated Studies in Human Survivability (GSAIS) 総合生存学館 www.gsais.kyoto-u.ac.jp/en-top
 Economics 経済学研究科 www.econ.kyoto-u.ac.jp/en	 Human and Environmental Studies 人間・環境学研究科 www.h.kyoto-u.ac.jp/index_e.php	 Global Environmental Studies (GSGES) 地球環境学堂・地球環境学舎 www2.ges.kyoto-u.ac.jp/en
 Science 理学研究科 www.sci.kyoto-u.ac.jp/en	 Energy Science エネルギー科学研究科 www.energy.kyoto-u.ac.jp/en	 Government 公共政策連携研究部・公共政策教育部 www.sg.kyoto-u.ac.jp/sg/?lang=en
 Medicine 医学研究科 www.med.kyoto-u.ac.jp/en	 Asian and African Area Studies (ASAFAS) アジア・アフリカ地域研究研究科 www.asafas.kyoto-u.ac.jp/en	 Management 経営管理研究部・経営管理教育部 www.gsm.kyoto-u.ac.jp/en

Kyoto University degree system



Note: Some faculties have different systems. Please refer to the websites of individual faculties and graduate schools for further details.

Kyoto University International Undergraduate Program (Kyoto iUP)



Kyoto iUP is a 4.5-year program comprising a six-month preparatory course followed by four years of undergraduate study. Japanese language proficiency is not required at the outset, as the program provides intensive Japanese language classes. Upon graduation, students are awarded a bachelor's degree in their selected major.

www.iup.kyoto-u.ac.jp/

See p. 13

English-Taught Undergraduate Program



Engineering
Undergraduate International Course Program of Civil Engineering

www.s-ge.t.kyoto-u.ac.jp/int/en

English-Taught Graduate Programs

 Economics International Graduate Programme for East Asia Sustainable Economic Development Studies www.econ.kyoto-u.ac.jp/kueac	 Energy Science International Energy Science Course www.energy.kyoto-u.ac.jp/en/education/course-overview
 Science International Course in Primatology and Wildlife Research www.cicasp.pri.kyoto-u.ac.jp	 Informatics International Course in Intelligence Science and Technology International Course in Social Informatics International Course in Communications and Computer Engineering www.i.kyoto-u.ac.jp/en/introduction/g30.html
 Engineering International Course in Management of Civil Infrastructure in the Department of Civil and Earth Resources Engineering www.ce.t.kyoto-u.ac.jp/mci/en International Course in Urban and Regional Development in the Department of Urban Management www.um.t.kyoto-u.ac.jp/urd/en Integrated Engineering Course, Human Security Engineering Field hse.gcoe.kyoto-u.ac.jp/index.html	 Biostudies/Medicine Global Frontier in Life Science www.lif.kyoto-u.ac.jp/e/?page_id=8516
	 Global Environmental Studies International Environmental Management Program www2.ges.kyoto-u.ac.jp/en/activities/iemp
	 Management International Business Administration Program International Project Management Program Kyoto-Cornell International Collaborative Degree Opportunity www.gsm.kyoto-u.ac.jp/en
 Agriculture Special Course in Agricultural Sciences – For the Global Future of Life, Food and the Environment www.kais.kyoto-u.ac.jp/english/global30	

Research Institutes, Centers, and Other Organizations

Research Institutes



Institute for Chemical Research (ICR)
化学研究所
www.kuicr.kyoto-u.ac.jp/sites/icr



Institute for Research in Humanities
人文科学研究所
www.zinbun.kyoto-u.ac.jp/english/



Institute for Life and Medical Sciences (LiMe)
医生物学研究所
www.infront.kyoto-u.ac.jp/?lang=en



Institute of Advanced Energy (IAE)
エネルギー理工学研究所
www.iae.kyoto-u.ac.jp/new-iae/en/



Research Institute for Sustainable Humanosphere (RISH)
生存圏研究所
www.rish.kyoto-u.ac.jp/?lang=en



Disaster Prevention Research Institute (DPRI)
防災研究所
www.dpri.kyoto-u.ac.jp/en/



Yukawa Institute for Theoretical Physics (YITP)
基礎物理学研究所
www.yukawa.kyoto-u.ac.jp/en-GB



Kyoto Institute of Economic Research (KIER)
経済研究所
www.kier.kyoto-u.ac.jp/en/



Research Institute for Mathematical Sciences (RIMS)
数理解析研究所
www.kurims.kyoto-u.ac.jp/en/index.html



Institute for Integrated Radiation and Nuclear Science (KURNS)
複合原子力科学研究所
www.rri.kyoto-u.ac.jp/en



Center for Southeast Asian Studies (CSEAS)
東南アジア地域研究研究所
kyoto.cseas.kyoto-u.ac.jp/en/



Center for iPS Cell Research and Application (CiRA)
iPS細胞研究所
www.cira.kyoto-u.ac.jp/e

Social Engagement Activities by Kyoto University Research Institutes

Kyoto University's research institutes actively engage in a range of diverse social engagement activities. One example is the Uji Open Campus. Uji Campus is home to many of Kyoto University's research institutes in the natural sciences and energy-related fields, and the open campus is held annually to provide the general public with an opportunity to see the institutes' activities firsthand. The open campus includes activities that can be enjoyed by people of all ages, including small children. Activities include lectures by faculty members, an exhibition introducing the various research institutes on campus, and several research facilities and laboratories that open their doors to the public. In 2021, due to the novel coronavirus pandemic, the event was held online as "VIRTUAL Uji Campus 2021." The event's website attracted over 1,600 visitors from 26 different countries.

www.uji.kyoto-u.ac.jp/english/index.html
www.jimu.uji.kyoto-u.ac.jp/open-campus/2021/virtual/ (in Japanese only)



Centers and Other Organizations



Academic Center for Computing and Media Studies (ACCMS)
学術情報メディアセンター
www.media.kyoto-u.ac.jp/accms_web/en/



Center for Ecological Research (CER)
生態学研究センター
www.ecology.kyoto-u.ac.jp/en/index.html



Wildlife Research Center (WRC)
野生動物研究センター
www.wrc.kyoto-u.ac.jp/en



The Kyoto University Museum
総合博物館
www.museum.kyoto-u.ac.jp/index_e.htm



Field Science Education and Research Center (FSERC)
フィールド科学教育研究センター
fserc.kyoto-u.ac.jp/wp/english



Fukui Institute for Fundamental Chemistry (FIFC)
福井謙一記念研究センター
www.fukui.kyoto-u.ac.jp



Center for the Evolutionary Origins of Human Behavior (EHUB)
ヒト行動進化研究センター
www.ehub-kyoto-u.com/en



Institute for Liberal Arts and Sciences (ILAS)
国際高等教育院
www.z.k.kyoto-u.ac.jp



Kyoto University Division of Graduate Studies
大学院教育支援機構
www.kugd.k.kyoto-u.ac.jp/en/



Agency for Student Support and Disability Resources
学生総合支援機構
www.assdr.kyoto-u.ac.jp/



Agency for Health, Safety and Environment
環境安全保健機構
www.esho.kyoto-u.ac.jp



Institute for Information Management and Communication (IIMC)
情報環境機構
www.iimc.kyoto-u.ac.jp/en



Kyoto University Library Network
図書館機構
www.kulib.kyoto-u.ac.jp/?lang=en



Office of Society-Academia Collaboration for Innovation (SACI)
産官学連携本部
www.saci.kyoto-u.ac.jp/en



Open Innovation Institute
オープンイノベーション機構
www.oi.kyoto-u.ac.jp/en



International Strategy Office
国際戦略本部
u.kyoto-u.jp/istrategy



Kyoto University Institute for the Future of Human Society
人と社会の未来研究院
ifohts.kyoto-u.ac.jp/



Kyoto University Archives
大学文書館
kua1.archives.kyoto-u.ac.jp/ja/english.html



Kyoto University Institute for Advanced Study (KUIAS)
高等研究院
kuias.kyoto-u.ac.jp/e

Institute for Integrated Cell-Material Sciences (iCeMS)
物質-細胞統合システム拠点
www.icems.kyoto-u.ac.jp/en

Institute for the Advanced Study of Human Biology (ASHBI)
ヒト生物学高等研究拠点
ashbi.kyoto-u.ac.jp



Center for African Area Studies (CAAS)
アフリカ地域研究資料センター
www.africa.kyoto-u.ac.jp/en/



The Hakubi Center for Advanced Research
白眉センター
www.hakubi.kyoto-u.ac.jp/eng/eng.html



Center for the Promotion of Interdisciplinary Education and Research (C-PiER)
学際融合教育研究推進センター
www.cpier.kyoto-u.ac.jp

*Please note: the main C-PiER website is in Japanese, but many of the units have websites in English.



Kyoto University Research Coordination Alliance (KURCA)
研究連携基盤
web.kurca.kyoto-u.ac.jp/



Kyoto University Research Administration Office (KURA)
学術研究支援室
www.kura.kyoto-u.ac.jp/en/



Center for Educational Outreach and Admissions
高大接続・入試センター
www.kyoto-u.ac.jp/ja/admissions/koudai/kuac



Gender Equality Promotion Office
男女共同参画推進本部
www.cwr.kyoto-u.ac.jp/eng/

Distinctive Education and Research Facilities



Institute for Liberal Arts and Sciences (ILAS)

By integrating the efforts of diverse faculties and departments throughout the university, ILAS plans and implements the courses that are common to all of the university's undergraduate programs, such as courses in the liberal arts, foreign languages, and introductory courses on basic sciences.

This ensures that the university's undergraduate programs are well balanced and provide a rich liberal arts and sciences component to complement their major fields of specialization. It also enables the programs to better meet students' individual interests and career plans.

The institute provides over two hundred courses entirely in English, helping Japanese students to cultivate an international mindset and providing international students with flexible curricula options. ILAS Seminars for first-year students are designed to ensure a smooth transition from high school to university education. The approach taken by ILAS helps students to broaden their horizons, develop new interests, and ultimately become more versatile and adaptable.

www.z.k.kyoto-u.ac.jp

Kyoto University Library Network

The Kyoto University Library Network plays a central role in the accumulation and curation of the university's intellectual assets, and in facilitating their utilization for education, research, and community engagement. Its collection comprises over 7.3 million volumes, including a designated national treasure and other rare materials.

In addition to a wide range of journals, books, and databases, the Kyoto University Library Network also provides online access to the university's research information repository and its digital archive of rare materials. The Main Library building includes versatile facilities to support study and research, such as the Learning Commons (group-work space) and the Media Commons (multimedia facility).

www.kulib.kyoto-u.ac.jp/?lang=en



Kyoto University Hospital

Established in 1899, Kyoto University Hospital has trained leading experts in diverse medical fields for over a century, and made significant contributions to the advancement of medicine and healthcare in Japan. As a government-certified institution, it provides a wide array of advanced treatments, and currently comprises 34 clinical departments, 20 cross-departmental clinical divisions, 15 central facilities divisions, 13 clinical management support facilities, the 7 divisions of the Institute for Advancement of Clinical and Translational Science (iACT), and 7 clinical research and education divisions.

Functioning as both a cutting-edge medical research facility and a community-oriented healthcare institution, the hospital's mission focuses on the three areas of medical care, research, and education. In fulfilling its mission, the hospital provides high-quality patient-oriented medical care (including a state-of-the-art Cancer Center), develops innovative new medical treatments in cooperation with other research facilities (such as the university's Center for iPS Cell Research and Application [CiRA]), and fosters conscientious and compassionate healthcare professionals.

www.kuhp.kyoto-u.ac.jp/english

The Kyoto University Museum

The Kyoto University Museum is a center for research based on specimens accumulated by the university's scholars throughout the course of its long history. To this day, it continues to advance groundbreaking new research utilizing its expanding collection, which currently comprises 2.6 million items that are relevant to a wide spectrum of fields—from cultural sciences, to natural history, to engineering. The museum is open to students and the public, exhibiting highlights from its collection and showcasing the university's research activities.

The museum also serves as a bridge connecting the university with the community—through exhibitions, lectures, and other events. It is also the coordinating institution of a worldwide network of university museums, and has organized several international symposia focusing on the new research field of museum science.

www.museum.kyoto-u.ac.jp/index_e.htm



Support Services for International Researchers and Students



Information and Advising Services

Information and advising services are available for international researchers and students who have concerns about their studies or about daily life in Japan.

International Student Advising Room

(For advice on academic studies and life in Japan)

www.kyoto-u.ac.jp/en/education-campus/facilities/international-student-advising.html

Kyoto University International Service Office

(For information about visas, accommodation, and daily life)

kuiso.oc.kyoto-u.ac.jp/en/



Cultural Exchange and Language Learning Opportunities

Kyoto University frequently holds events to promote intercultural exchange in which students can participate, and various forms of support are provided for students and researchers seeking to improve their Japanese language skills.

Student Lounge KI-ZU-NA

www.kyoto-u.ac.jp/en/education-campus/facilities/student-lounge-kizuna

Education Center for Japanese Language and Culture

www.z.k.kyoto-u.ac.jp/introduction/education-center-for-japanese

Health Care Office, Occupational Welfare Division

Kyoto University's Health Care Office provides health checkups, first aid, and health counseling, and issues health certificates for students, faculty, and staff. In addition to the Health Care Office on Yoshida Campus, there are branch offices on Katsura and Uji Campus.

www.hoken.kyoto-u.ac.jp/en



Kyoto University's Response to the Novel Coronavirus (COVID-19)

At the time of this booklet's publication, university activities have been affected by the novel coronavirus (COVID-19) pandemic. Please see the following webpage for updated information on the pandemic and Kyoto University's response measures:

www.kyoto-u.ac.jp/en/about/safety/coronavirus.html



Accommodation

Kyoto University provides accommodation for international researchers and students at several locations close to its campuses, including two new dormitories near Yoshida Campus that opened in October 2019. The two new dormitories increase the number of rooms provided exclusively for international researchers and students by approximately 130, bringing the total number of rooms to approximately 550.

kuiso.oc.kyoto-u.ac.jp/en/housing/facilities/



Research Promotion and Coordination

To promote excellence in research, the Kyoto University Research Administration Office (KURA) provides faculty members with comprehensive support. Staffed by a team of knowledgeable experts in research development, KURA connects researchers in different fields to advance the development of interdisciplinary research and new research fields.

Kyoto University Research Administration Office (KURA)

www.kura.kyoto-u.ac.jp/en/



Support for Childcare and Work-Life Balance

The Gender Equality Promotion Center provides various support services, including:

- Childcare support
- Care for sick children
- Support to maintain a healthy work-life balance

(Please contact the center in advance to check eligibility and other requirements)

Gender Equality Promotion Center

www.cwr.kyoto-u.ac.jp/eng/

Campuses



Yoshida (Main Campus)

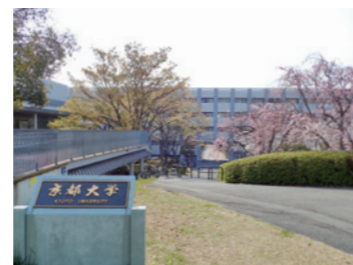
Located near the center of Kyoto City, Yoshida Campus is close to many scenic and natural spots, such as the famous Philosopher's Walk and the Kyoto Imperial Palace. As the university's main campus, it has long been a familiar landmark for Kyoto citizens, and well-known as a vibrant, bustling hub of student life. Buildings on the campus present a variety of architectural styles—from traditional Japanese wood and brick buildings dating back to the time of the university's establishment, to modern laboratory buildings that house cutting-edge facilities.



Katsura

Katsura Campus comprises three clusters of buildings overlooking Kyoto from the hills to the west of the city. It was conceived

as a "Techno-Science Hill" for graduate studies in engineering, where technology and science come together to provide an innovative new style of education and research environment.

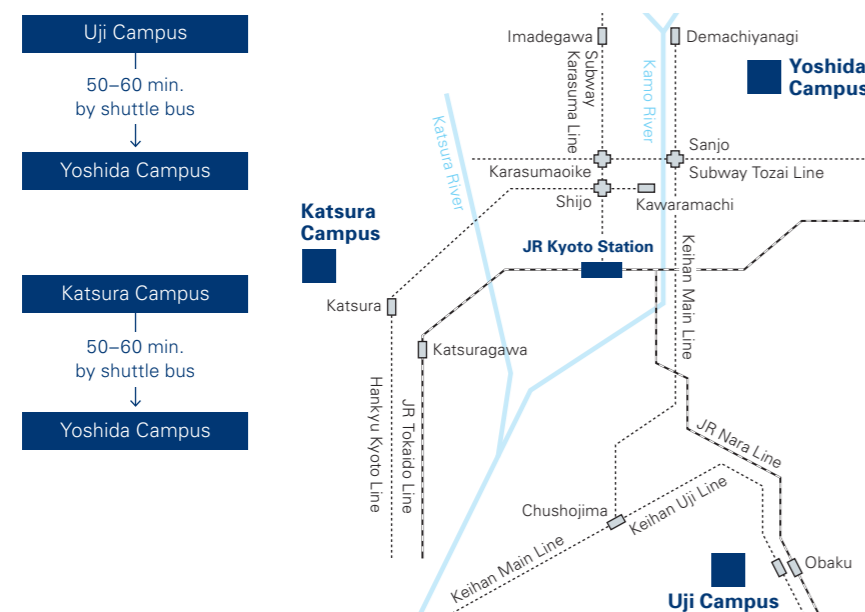


Uji

Located to the south of Kyoto City, Uji Campus is close to two UNESCO World Heritage Sites: Byōdōin Temple and Ujigami Shrine. It is

home to a number of leading research institutes and centers, including several large-scale facilities devoted to laboratory work in the natural sciences and energy-related fields.

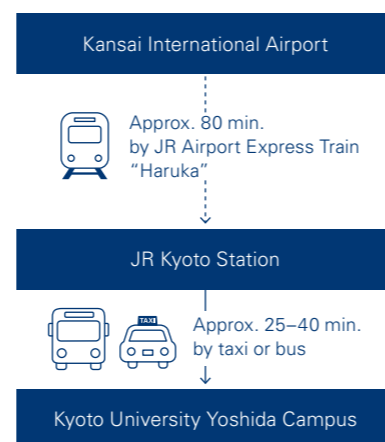
Location of the Campuses in Kyoto



Shuttle Bus Service

www.kyoto-u.ac.jp/sites/default/files/inline-files/2104-timetable-12b555c33880ef53b74abb6324a77515.pdf

Access from Kansai International Airport



www.kyoto-u.ac.jp/en/access



Facilities throughout Japan

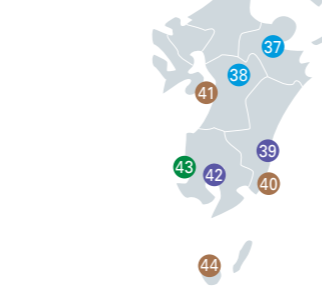
Since its establishment, Kyoto University has been renowned for its diverse fieldwork achievements. To facilitate those efforts, the university maintains a number of facilities at locations throughout Japan that serve as valuable resources for the activities of researchers.



Hokkaido Forest Research Station
Shiranuka Branch, Hokkaido



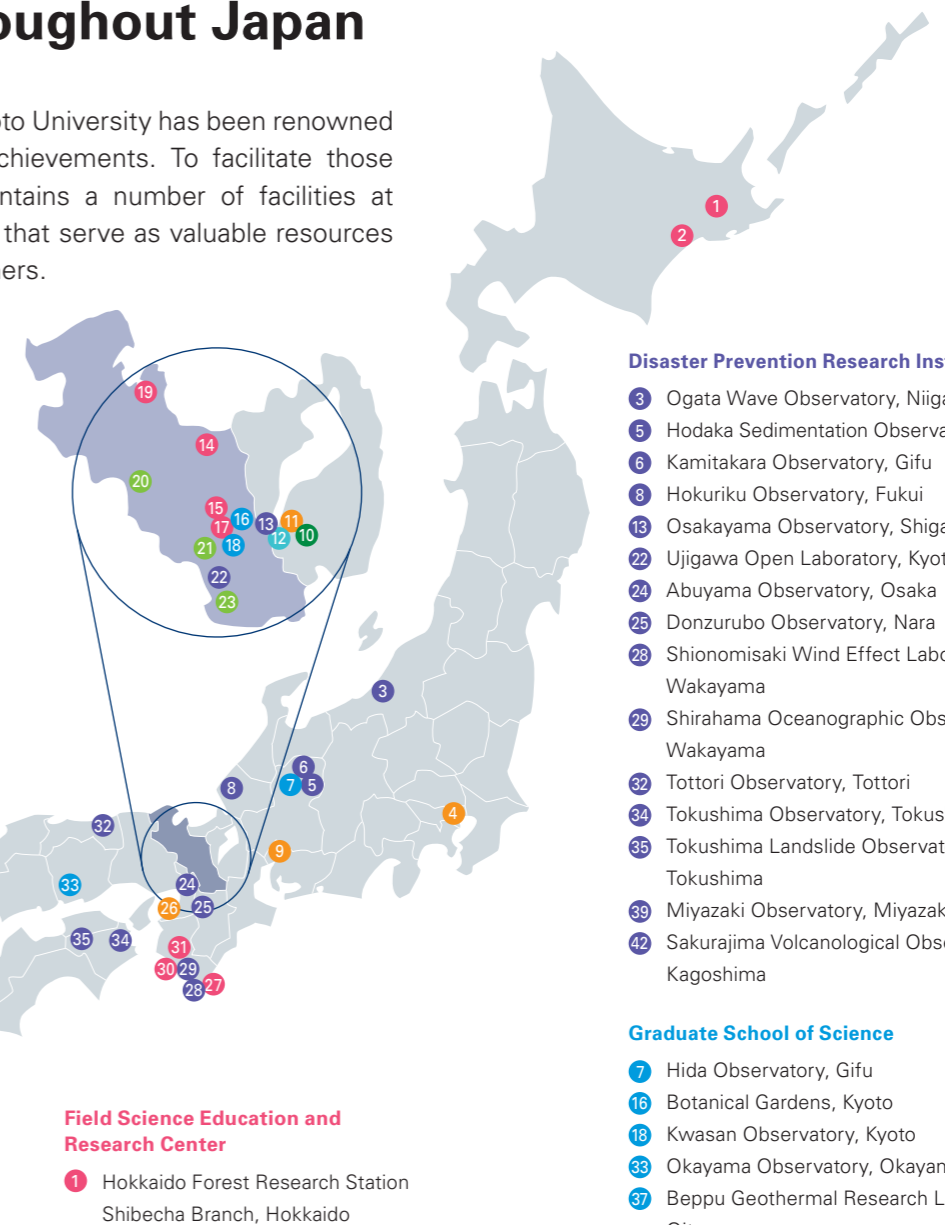
Shirahama Oceanographic
Observatory, Wakayama



Okayama Observatory, Okayama



Sakurajima Volcanological
Observatory, Kagoshima



Disaster Prevention Research Institute

- 3 Ogata Wave Observatory, Niigata
- 5 Hodaka Sedimentation Observatory, Gifu
- 6 Kamitakara Observatory, Gifu
- 8 Hokuiku Observatory, Fukui
- 13 Osakayama Observatory, Shiga
- 22 Ujigawa Open Laboratory, Kyoto
- 24 Abuyama Observatory, Osaka
- 25 Donzurubo Observatory, Nara
- 28 Shionomisaki Wind Effect Laboratory, Wakayama
- 29 Shirahama Oceanographic Observatory, Wakayama
- 32 Tottori Observatory, Tottori
- 34 Tokushima Observatory, Tokushima
- 35 Tokushima Landslide Observatory, Tokushima
- 39 Miyazaki Observatory, Miyazaki
- 42 Sakurajima Volcanological Observatory, Kagoshima

Graduate School of Science

- 7 Hida Observatory, Gifu
- 16 Botanical Gardens, Kyoto
- 18 Kwasan Observatory, Kyoto
- 33 Okayama Observatory, Okayama
- 37 Beppu Geothermal Research Laboratory, Oita
- 38 Aso Volcanological Laboratory, Kumamoto

Research Institute for Sustainable Humanosphere

- 10 Shigaraki MU Observatory, Shiga
- 43 Living-sphere Simulation Field, Kagoshima

Wildlife Research Center

- 40 Koshima Field Station, Miyazaki
- 41 Kumamoto Sanctuary, Kumamoto
- 44 Yakushima Field Station, Kagoshima

Others

- 4 Tokyo Office, Tokyo
- 9 Center for the Evolutionary Origins of Human Behavior, Aichi
- 11 Center for Ecological Research, Shiga
- 26 Institute for Integrated Radiation and Nuclear Science, Osaka

Field Science Education and Research Center

- 1 Hokkaido Forest Research Station Shibeche Branch, Hokkaido
- 2 Hokkaido Forest Research Station Shiranuka Branch, Hokkaido
- 14 Ashiu Forest Research Station, Kyoto
- 15 Kamigamo Experimental Station, Kyoto
- 17 Kitashirakawa Experimental Station, Kyoto
- 19 Maizuru Fisheries Research Station, Kyoto
- 27 Kii-Oshima Research Station, Wakayama
- 30 Seto Marine Biological Laboratory, Wakayama
- 31 Wakayama Forest Research Station, Wakayama
- 36 Tokuyama Experimental Station, Yamaguchi

Graduate School of Agriculture

- 20 Livestock Farm, Kyoto
- 21 Laboratory of Crop Evolution, Kyoto
- 23 Experimental Farm, Kyoto

Graduate School of Engineering

- 12 Research Center for Environmental Quality Management, Shiga

Kyoto: Japan's Cultural Heartland



Kyoto flourished as the capital city of Japan from 794 to 1868, and to this day, possesses a rich cultural heritage that draws visitors from around the world. It is home to 17 UNESCO World Heritage Sites, many world-famous temples and shrines, ornate gardens, and traditional festivals.

Founded on a community of skilled artisans and craftspeople versed in aesthetics developed over a millennium, modern-day Kyoto is also the birthplace of frontier technologies and international business successes. It is a city in which one can find the best of both the ancient and modern.

Students and researchers at Kyoto University find that the vibrant backdrop of Kyoto City brings constant inspiration and new discoveries in their daily lives and academic endeavors.



Bon Odori
(traditional dance)



Tea ceremony



Kintsugi
(ornamental pottery repair)

Cultural activities for international students



World's No.1 tourist destination ^{*1}
87 million tourists visited Kyoto in 2019 (3.9 million from abroad)



17 UNESCO World Heritage sites
Numerous world-famous temples, shrines, and ornate gardens



Japan's No.1 "student city"
(based on student-to-population ratio)
University students account for 10% of the city's population ^{*2}



Ranked **17th** most livable city in the world ^{*3}



Advanced technology and a tradition of enterprise

Home to many world-leading companies and a flourishing spirit of industry-government-academia collaboration

^{*1} Wanderlust Reader Travel Awards (2020)

Kyoto Prefecture Tourism Office: Tourist Survey (2019)

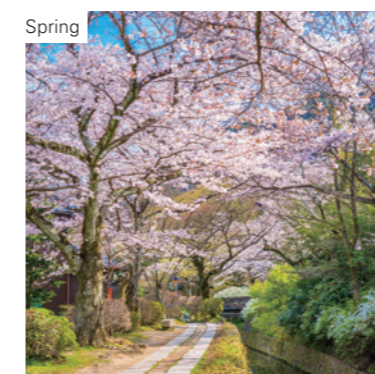
^{*2} Kyoto City Data System Promotion Office: Estimated Population (2021)

Ministry of Education, Culture, Sports, Science and Technology: School Basic Survey (2021)

^{*3} Monocle* Quality of Life Survey: Top 25 Cities (2019)



Kyoto University's Seifuso Villa, classified as an Important Cultural Property by the Government of Japan



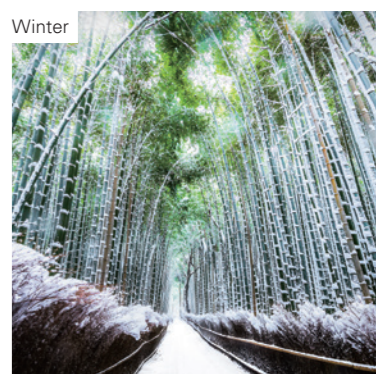
The picturesque
Philosopher's Walk pathway



A float decorated with
paper lanterns during the Gion Festival



Kiyomizu-dera Temple



Bamboo forest in Arashiyama

For More Information

Printed Materials



Admissions Guide
for International Applicants



Liberal Arts and Sciences
to Learn in English



Handbook
for International Students



Society-Academia
Collaboration Handbook



Kyoto University
International Undergraduate
Program (Kyoto iUP)



Japan Gateway:
Kyoto University Top
Global Program



Kyoto University Handbook
for International Researchers



Overseas Offices

European Center (Heidelberg)

Email: info_eu@oc.kyoto-u.ac.jp
www.oc.kyoto-u.ac.jp/overseas-centers/eu/en

ASEAN Center (Bangkok)

Email: asean-bangkok@oc.kyoto-u.ac.jp
www.oc.kyoto-u.ac.jp/overseas-centers/asean/en

North American Center (Washington, DC)

San Diego Liaison Office (San Diego)
Email: northamericancenter@mail2.adm.kyoto-u.ac.jp
www.oc.kyoto-u.ac.jp/overseas-centers/north-america/en

Africa Office (Addis Ababa)

Email: kuao@jambo.africa.kyoto-u.ac.jp
www.africaunit.kyoto-u.ac.jp/en

International Offices on Campus

International Affairs Division

Address: Yoshida-honmachi, Sakyo-ku, Kyoto 606-8501
Email: ipromo@mail2.adm.kyoto-u.ac.jp
www.oc.kyoto-u.ac.jp/en/

International Education and Student Mobility Division

Address: Yoshida-honmachi, Sakyo-ku, Kyoto 606-8501
Email: studyku@mail2.adm.kyoto-u.ac.jp
www.kyoto-u.ac.jp/en/education-campus

Official Websites

Kyoto University Website

www.kyoto-u.ac.jp/en

Graduate Admission Guide for International Applicants

www.kyoto-u.ac.jp/en/education-campus/education-and-admissions/intl-admissions

Kyoto University on Social Media



www.instagram.com/kyotouniversity



www.facebook.com/Kyoto.Univ.E



twitter.com/KyotoU_News



Published in September 2022

Produced by the International Affairs Division, Kyoto University

Email: ipromo@mail2.adm.kyoto-u.ac.jp