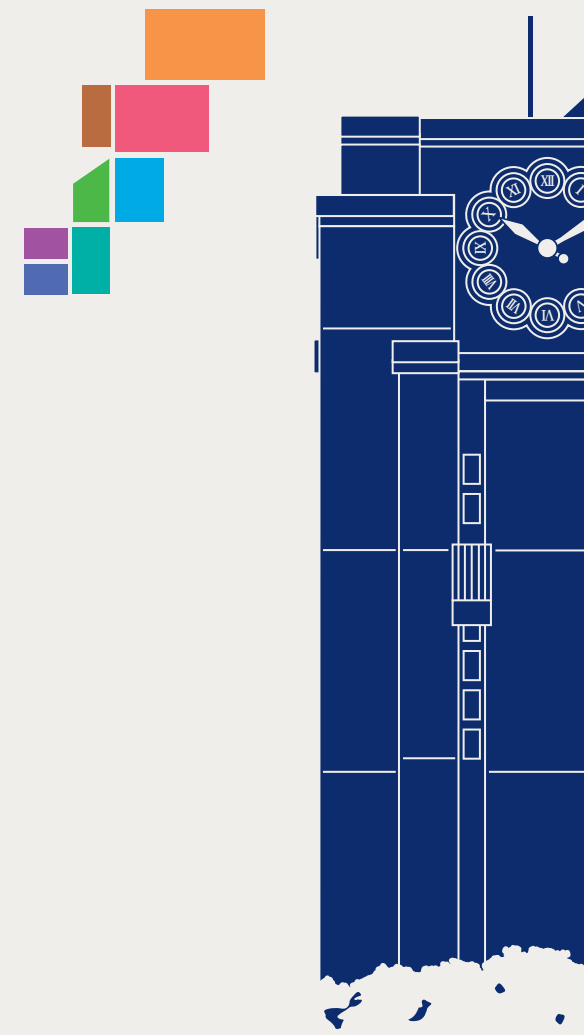


KYOTO UNIVERSITY WALKING MAP

English edition

- North Campus
- Main Campus
- Yoshida-South Campus
- West Campus
- Faculty of Medicine Campus
- University Hospital, East Campus
- Faculty of Pharmaceutical Sciences Campus
- University Hospital, West Campus



Welcome to Kyoto University

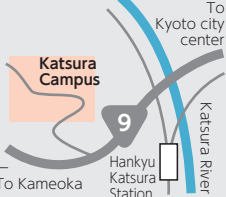
Kyoto University was established in 1897 as the second Imperial University in Japan. The University has three large campuses, and the Main Campus is filled with history and charm that remains since its foundation. There are many unique buildings that reflect the passage of eras, and some of these have been designated as Important Cultural Properties, or Registered Tangible Cultural Properties. This map introduces the history and highlights of that Yoshida Campus. While here, experience the "Kyoto University style". Cultivated from the Philosophy of "Academic Freedom".

Yoshida Campus



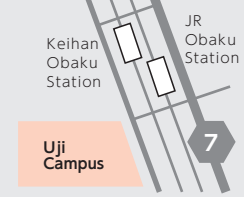
Other Campuses

Katsura Campus



In their fourth year, many students in the Faculty of Engineering travel to the Katsura Campus for their research.

Uji Campus



This campus has four laboratories. Some of the students in the Faculty of Agriculture and Faculty of Engineering come to this campus for their research.

Here are five tours for you to feel the different charms of Kyoto University. The more you walk, the more the University becomes visible!

Short Tour

This is an introductory tour for people new to Kyoto University. It is possible to walk around and see the major spots on campus in a short period of time. This course is recommended for people who want to go around Kyoto University efficiently.

- Main Campus Main Gate [MAP 3-E](#)
- Clock Tower Centennial Hall [MAP 2-E](#)
- Faculty of Law and Faculty of Economics Main Building [MAP 2-E](#)
- Sonjo-do [MAP 2-D](#)
- Faculty of Letters Exhibition Hall [MAP 2-E](#)
- Former Faculty of Engineering Department of Civil Engineering Historic Building [MAP 1-EF](#)
- Former Faculty of Engineering Department of Architecture Historic Building [MAP 1-F](#)

※Please be aware that some facilities are not open to the general public.



Kyoto University souvenir "College T-shirt"

Architectual Tour

This tour features points on campus such as historical architecture statues, monuments, and memorial trees. The buildings are worth looking at even if it is from the outside. This course is recommended for people who want to come into contact with the undertakings and achievements of our predecessors and to take on their own research themes with even greater passion.

- Rakuyu Kaikan [MAP 4-D](#)
- Faculty of Integrated Human Studies Main Gate [MAP 3-E](#)
- Main Campus Main Gate [MAP 3-E](#)
- Former Petrochemistry Course classroom (Southwest side) [MAP 2-E](#)
- Sonjo-do [MAP 2-D](#)
- Faculty of Letters Exhibition Hall [MAP 2-E](#)
- Former Faculty of Engineering Department of Civil Engineering Historic Building [MAP 1-EF](#)
- Former Faculty of Engineering Department of Architecture Historic Building [MAP 1-F](#)
- Faculty of Agriculture Front Gate [MAP 4-G](#)
- Former Head Office of the Forest Research Station [MAP 3-G](#)
- Center for Informatics in East Asian Studies [MAP 3-4-H](#)

※Please be aware that some facilities are not open to the general public.

Main Campus Main Gate (MAP 3-E) / Clock Tower Centennial Hall (MAP 2-E)



Former Head Office of the Forest Research Station (MAP 3-G)



Gourmet Tour

There are a lot of dining halls, cafes, and restaurants at Kyoto University open to the general public. Each campus has its own characteristics. We recommend selecting a different place to suit your preferences: Do you want to: "Eat everything on the menu?" "Become totally like a Kyoto University student?" "Celebrate a small anniversary?"

- Central Cafeteria [MAP 2-E](#)
- Café-Restaurant Camphora [MAP 2-E](#)
- Restaurant La Tour [MAP 2-E](#)
- Tully's Coffee Kyoto University Clock Tower Store [MAP 2-E](#)
- Cafeteria Renais [MAP 2-D](#)
- Yoshida Cafeteria [MAP 3-D](#)
- North Dining Hall [MAP 4-G](#)
- South Dining Hall [MAP 3-B](#)



Left : Kebab from Cafeteria Renais
Right: The Daily Special Café-Restaurant Camphora

Scenic Tour

It is possible to feel the changing seasons by viewing the different flowers and plants at Kyoto University. There is no doubt that photogenic scenes can be found, against the backdrop of the historical buildings around campus.

- Camphor Tree in front of the Clock Tower [MAP 2-E](#)
- Faculty of Medicine Street [MAP 2-B](#)
- Promenade [MAP 3-E](#)
- Behind the Clock Tower [MAP 2-E](#)
- In front of Faculty of Science Bldg. No 6 [MAP 4-G](#)
- Lake Biwa Canal [MAP 3-H](#)

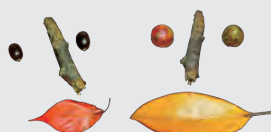


There are benches throughout Campus providing rest for students.

Neighborhood Tour

The historical city of Kyoto is dotted with more than 2,000 Shinto shrines and Buddhist temples. These include the 17 cultural assets such as Kinkaku-ji, Kiyomizu-dera, and Nijo Castle that comprise the "Historic Monuments of Ancient Kyoto" World Heritage Sites. Yoshida Campus is outside the busy commercial area of Kyoto City, in a calm environment that retains the atmosphere of the ancient city. This makes it possible to enjoy the charm of Kyoto, while conducting research.

- Kamogawa River [MAP 3.4-A](#)
- Yoshida Shrine [MAP 3-F](#)
- Imadegawa St. [MAP 1-E-F](#)
- Lake Biwa Canal [MAP 3-H](#)



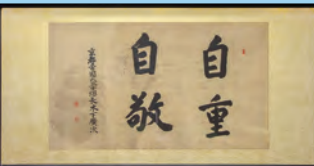
Kyoto University is surrounded by a peaceful environment

The more you know about Kyoto University

Kyoto University was founded in 1897. For over 120 years, it built a history with Yoshida campus at its core. Many of the buildings from the time of its foundation still remain and are in use today as teaching and/or administrative buildings. Throughout the years, many things at Kyoto University have changed. Did you know that the original Camphor Tree fell down during the 1934 Muroto Typhoon? The current tree is a second generation, and was replanted in 1935. Also, there used to be a completely different building where the clock tower is now. Yoshida Campus still retains the atmosphere of that time, while continuing to evolve.



The first President of the University, Hiroji Kinoshita, believed that the characteristic of Kyoto University should be an education system that values free academic research and the independence of students. At the first ever entrance ceremony, he said, "University students should live by the principle of self-reliance and self-respect and we should expect their independence." This spirit of valuing autonomy has been passed on to today as the philosophy of "Academic Freedom."



Today, Kyoto University has 10 faculties, 18 graduate schools, 13 research laboratories, 14 education and research facilities, and hosts more than 60 overseas centers. It has sent over 210,000 graduates into the world, who are active in both academia and business. The University continues to support original and advanced research, producing multiple recipients of global prizes.

A year at Kyoto University

- **April** · Entrance ceremony
· Kouhousai Festival (Online Only)



Entrance ceremony



Kouhousai Festival

- **June** · University Foundation Day (June 18)
- **August** · Open Campus
May be held only online



Open Campus

- **September** · Kyoto University Academic Day
- **November** · Homecoming Day
· November Festival (NF)
May be held only online
· Special Entrance Examination



Homecoming Day



November Festival (NF)

- **December** · Special Entrance Examination
- **January** · The Common test for University admissions
- **February** · Kyoto University General Entrance Examination

- **March** · Entrance examination results announcement
· Degree Conferment Ceremony
· Graduation ceremony
· Special Entrance Examination



Entrance examination results announcement



Graduation ceremony

