



京都大学

www.kyoto-u.ac.jp/en

KYOTO UNIVERSITY

2021-2022

KYOTO UNIVERSITY

2021-2022



Contents

Kyoto University Mission Statement	2
Message from the President	3
Kyoto University Basic Concept for Internationalization	4
History of Kyoto University	5
Award-Winning Research	6
Kyoto University at a Glance	7
Current Initiatives at Kyoto University	9
Designated National University (DNU) Initiatives at Kyoto University	9
Developing the “KyotoU Model” and Promoting Innovation through Industry-Academia Collaboration	10
Global Engagement	11
International Partners/Overseas Offices and Facilities	11
On-site Laboratory Initiative	13
Kyoto University International Undergraduate Program (Kyoto iUP)	14
Double and Joint Degree Programs	15
Student Mobility	16
General Information: Departments	17
Undergraduate Faculties/Graduate Schools	17
Kyoto University International Undergraduate Program (Kyoto iUP)	18
English-Taught Undergraduate Program/English-Taught Graduate Programs	18
Research Institutes	19
Centers and Other Organizations	20
General Information: Core Facilities	21
Distinctive Education and Research Facilities	21
General Information: Support Services	23
Support Services for International Researchers and Students	23
General Information: Campuses and Facilities	25
Campuses	25
Facilities throughout Japan	26
Kyoto: Japan’s Cultural Heartland	27
For More Information	29

Cover: Illustration of cherry blossom viewing from *Kunijo Kabuki Ekotoba (An Illustrated Manuscript of Okuni’s Kabuki)*, held by the Kyoto University Library

Kunijo Kabuki Ekotoba (An Illustrated Manuscript of Kuni’s Kabuki) has long been valued by the academic community as an important document. The manuscript is an example of *Naraehon*—illustrated manuscripts that were produced from the late Muromachi period to the early Edo period.

The story in the manuscript describes how Kuni, the daughter of a Shinto priest of the Izumo Taisha Shrine, learned kabuki dance, and then went to dance under the cherry-blossoms at the Kitano Shrine in Kyoto. As she performs her first dance, the *Nembutsu odor*, reciting a Buddhist chant, she summons a ghost, who then recites the chant with her to express remorse over his early death.

The story portrays Kuni as a deity of the Izumo Taisha Shrine, who performs her dance to exorcise evil from all sentient beings. It also provides a glimpse of the kabuki dance’s transformation into its dramatic form that we are familiar with today.

Kyoto University Mission Statement

Kyoto University states its mission to sustain and develop its historical commitment to academic freedom and to pursue harmonious coexistence within the human and ecological community on this planet.



Kyoto University will generate world-class knowledge through freedom and autonomy in research that conforms with high ethical standards.

As a university that comprehends many graduate schools, faculties, research institutes and centers, Kyoto University will strive for diverse development in pure and applied research in the humanities, sciences and technology, while seeking to integrate these various perspectives.



Within its broad and varied educational structure, Kyoto University will transmit high-quality knowledge and promote independent and interactive learning.

Kyoto University will educate outstanding and humane researchers and specialists, who will contribute responsibly to the world’s human and ecological community.



As a university committed to a broad social engagement, Kyoto University will encourage cooperation with local and national society, and will disseminate knowledge informed by the ideals of freedom and peaceful coexistence.

As an international institution, Kyoto University will promote foreign academic exchange and thereby strive to contribute to the well-being of the world.



In order to enhance the free development of learning, Kyoto University will pay due respect to the administrative independence of each of its component institutions, while promoting cooperation among them.

Kyoto University will conduct its administration with regard for the environment and respect for human rights and will be accountable to society at large.

Message from the President



Since its foundation in 1897, Kyoto University has cultivated a spirit of creativity and originality in its students and researchers through an institutional philosophy of academic freedom founded on frank and open dialogue. From its earliest days, the university has placed great importance on steadily increasing its international presence—expanding its partnerships and making a meaningful contribution to the international community.

Kyoto University's international exchange and collaboration is pursued through close partnerships with institutions overseas, student and researcher exchange programs, interdisciplinary research collaboration, and a multitude of other activities. The creative and groundbreaking accomplishments of the university's researchers continue to garner international recognition in the form of prestigious accolades, such as the Nobel Prize, Fields Medal, and other prestigious awards.

One unique feature of Kyoto University's syllabus is that it provides our undergraduate students with opportunities to experience innovative and advanced research right from their first-year of study—an approach rooted in the university's long-standing tradition of fostering a spirit of adventurous self-reliance and independence in its students, as well as stressing the importance of hands-on interaction and dialogue.

In 2017, Kyoto University was assigned by the Japanese government as one of the first Designated National Universities (DNU). DNU status has enabled the university to implement even more ambitious initiatives in the areas of university management, education, and research, and it positions Kyoto University at the forefront of a new era of international academic exchange and collaboration. In the field of industry-government-academia collaboration, the university has established a new "KyotoU Model," which includes four university subsidiary companies that make diverse use of the university's advanced knowledge "seeds" to further engage with and contribute to society.

Currently, multiple complex issues threaten the health and lives of all people on Earth. Such issues include the unexpectedly rapid worsening of climate change, large-scale natural disasters, and environmental degradation, as well as the escalation of international conflicts, widening economic disparity, and the international spread of infectious diseases, such as the novel coronavirus. We must now reaffirm our commitment to Kyoto University's mission—we must earnestly and determinedly seek solutions to the multifaceted and complex issues being faced around the world, and consistently share our progress with society.

2022 will mark the 125th anniversary of Kyoto University's founding. Throughout its history the university's pioneering spirit of creativity and diversity has borne much fruit, but to maintain the production of such nourishing fruit in the future, we must plant seedlings and cultivate them properly. By firmly linking the university's chain of achievements throughout the past 125 years to its future, we will continue to make the utmost efforts to contribute to society through the creation of new intellectual value and the cultivation of outstanding human resources.

Nagahiro Minato
October 2021

Kyoto University

Basic Concept for Internationalization

Bridging the World through Excellence

Kyoto University engages with the international community through diverse and vibrant networks founded on multicultural understanding. The university's internationalization efforts are a vital component of its endeavors to cultivate future leaders, to pioneer knowledge-creation and academic advancement through outstanding research and education, and thereby contribute to the global community.

The dynamic advancement of the university's international education and research initiatives is bolstered by a robust and evolving administrative support system performing to high standards of expertise and professionalism.

The Kyoto University Basic Concept for Internationalization presents a vision for the university's contribution to a sustainable future for global society.



Education



Education that Cultivates International Outlooks and Competencies

- Provide attractive academic programs and curricula
- Promote international student mobility by developing partnerships with outstanding institutions overseas
- Further develop an inclusive environment with comprehensive student support



Research



Global Development of Innovative Research

- Promote international mobility of researchers underpinned by partnerships developed strategically
- Make efficient use of research resources and outcomes by building international networks among industry, government, and academia
- Develop strategic communications to best present the university's research activities and outcomes to international stakeholders
- Enhance internationally open and friendly research environments



Harmonious Coexistence



Contribution to Harmonious Coexistence on the Planet

- Nurture competent and responsible global citizens
- Foster education and research with international scope that contribute to global and local sustainable development and produce meaningful societal impact
- Provide a campus that is inclusive and respectful of social and cultural diversity

Complete text of the Basic Concept for Internationalization
u.kyoto-u.jp/mhuqk

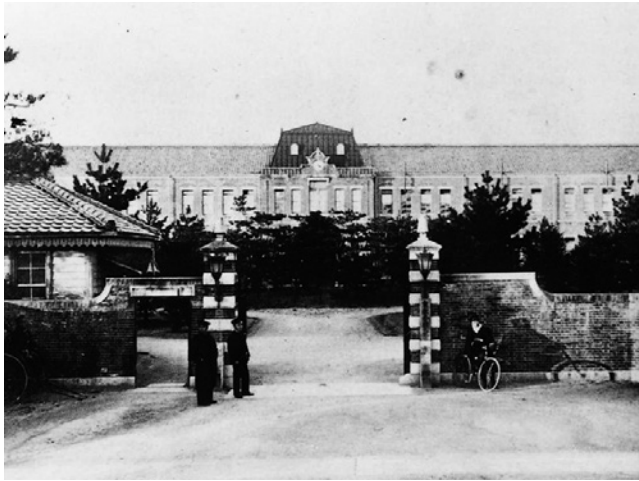
History of Kyoto University

Kyoto University was established in 1897 as Japan's second imperial university. It is located in the historic city of Kyoto, which flourished as the nation's capital for over a thousand years until that status was transferred to Tokyo in the wake of the Meiji Restoration. Even after the relocation of the capital, Kyoto continued to be a hub of culture and technology. Japan's first elementary school and girls' school were opened there, and it was the location of the country's first commercial hydroelectric plant and first streetcars. It was within that milieu of cultural, technological, and industrial advancement that Kyoto University was established.

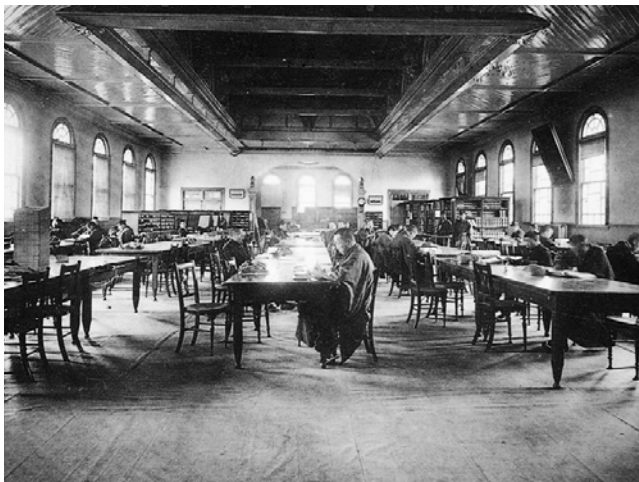
During its early period, Kyoto University developed various new approaches to education and research, including small-group seminars that emphasize interaction between students and instructors, incorporating thesis submission as a graduation requirement, and providing students with increased freedom in selecting their study subjects as a way to enhance motivation and encourage creativity. These innovative approaches pioneered by the university were eventually adopted as standard practices in Japanese higher education.

It was also in the early phase of its development that Kyoto University firmly grasped the importance of university autonomy. Academic freedom is essential to the scholarly quest for the truth—a goal common to all universities—and university autonomy is essential in ensuring academic freedom. Kyoto University was the first university in Japan to implement a structure whereby its faculty were free from external interference.

Through its pioneering approach to education and research, Kyoto University has cultivated some of Japan's finest minds and made significant contributions to the advancement of scholarship and science. Numerous winners of major international awards are affiliated with the university, such as renowned physicist Hideki Yukawa, Japan's first Nobel laureate. To this day, the university is known throughout Japan and around the world for its unique culture of academic freedom, and for being at the vanguard of cutting-edge research.



The view through the main gates (circa 1900)



The university library in the Meiji period (circa 1909)



Students in front of the university clock tower (circa 1928)

Award-Winning Research

Kyoto University is one of the most respected research universities in Asia. This is testified by the accolades conferred upon its researchers past and present.

Nobel Prize



1949
Physics
Hideki Yukawa



1965
Physics
Sin-itiro Tomonaga



1981
Chemistry
Kenichi Fukui



1987
Physiology or Medicine
Susumu Tonegawa



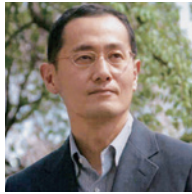
2001
Chemistry
Ryoji Noyori



2008
Physics
Makoto Kobayashi



2008
Physics
Toshihide Maskawa



2012
Physiology or Medicine
Shinya Yamanaka



2014
Physics
Isamu Akasaki



2018
Physiology or Medicine
Tasuku Honjo



2019
Chemistry
Akira Yoshino



Dr. Tasuku Honjo, distinguished professor and deputy director-general of the Kyoto University Institute for Advanced Study (KUIAS), receiving the 2018 Nobel Prize in Physiology or Medicine.



Dr. Akira Yoshino, honorary fellow of Asahi Kasei Corporation, professor at Meijo University, and alumnus of Kyoto University, receiving the 2019 Nobel Prize in Chemistry.

Fields Medal

1970	Mathematics	Heisuke Hironaka
1990	Mathematics	Shigefumi Mori

Gauss Prize

2006	Mathematics	Kiyoshi Ito
------	-------------	-------------

Lasker Award

1987	Basic Medical Research	Susumu Tonegawa
1989	Basic Medical Research	Yasutomi Nishizuka
1998	Basic Medical Research	Yoshio Masui
2009	Basic Medical Research	Shinya Yamanaka
2014	Basic Medical Research	Kazutoshi Mori

Japan Prize

2004	Chemical Technology for the Environment	Kenichi Honda
2005	Information and Media Technology	Makoto Nagao
2005	Cell Biology	Masatoshi Takeichi

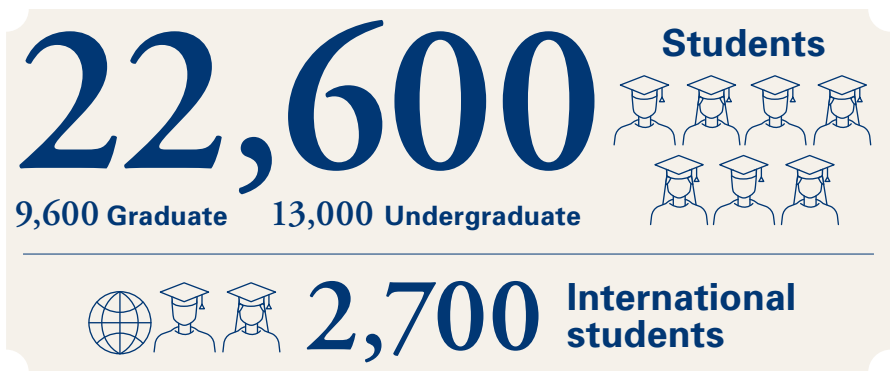
Kyoto Prize

1995	Basic Sciences	Chushiro Hayashi
1998	Basic Sciences	Kiyoshi Ito
2004	Advanced Technology	Alan Curtis Kay
2009	Advanced Technology	Isamu Akasaki
2010	Advanced Technology	Shinya Yamanaka
2013	Basic Sciences	Masatoshi Nei
2016	Advanced Technology	Takeo Kanade
2016	Basic Sciences	Tasuku Honjo
2018	Mathematical Sciences	Masaki Kashiwara

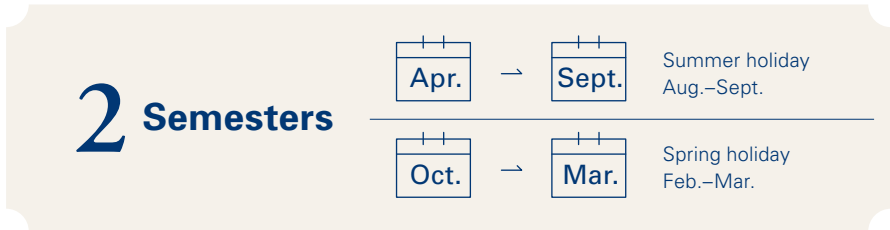
Chern Medal

2018	Mathematics	Masaki Kashiwara
------	-------------	------------------

Kyoto University at a Glance



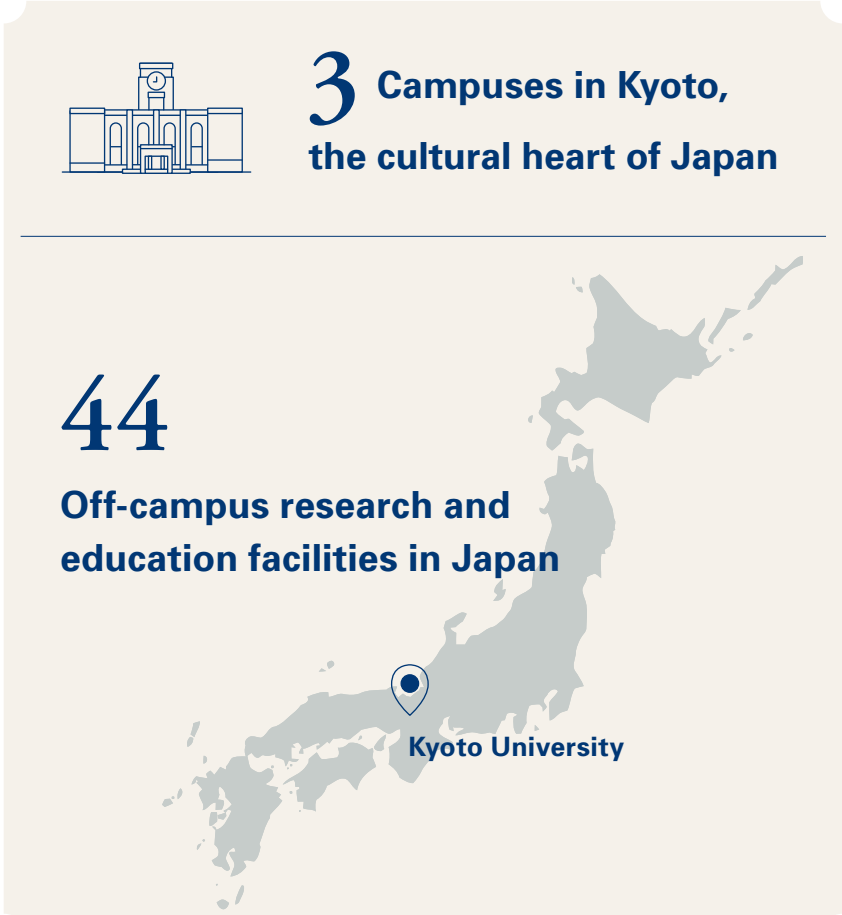
See Facts and Figures pp. 2, 18–19



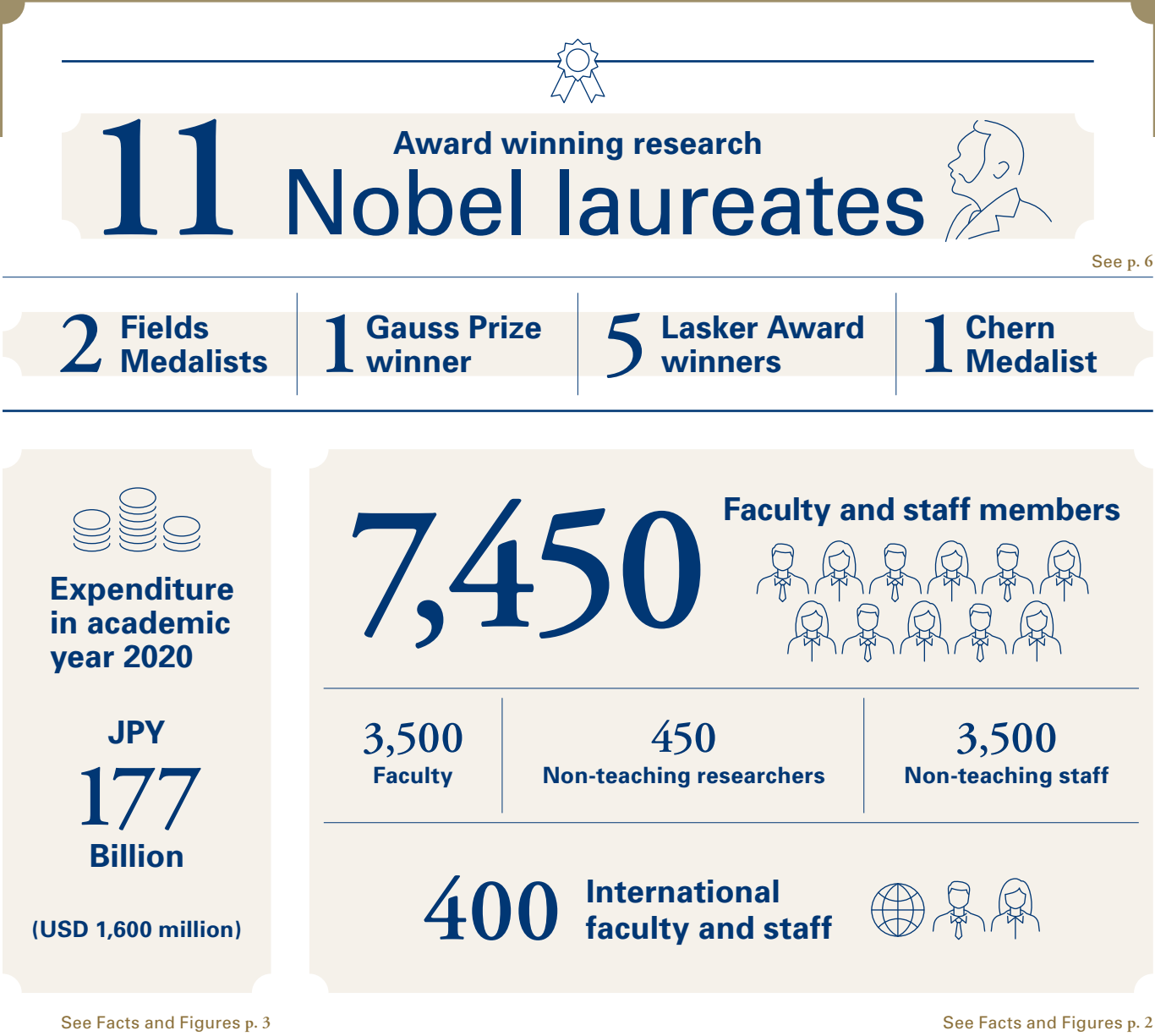
See pp. 17–20



See p. 5

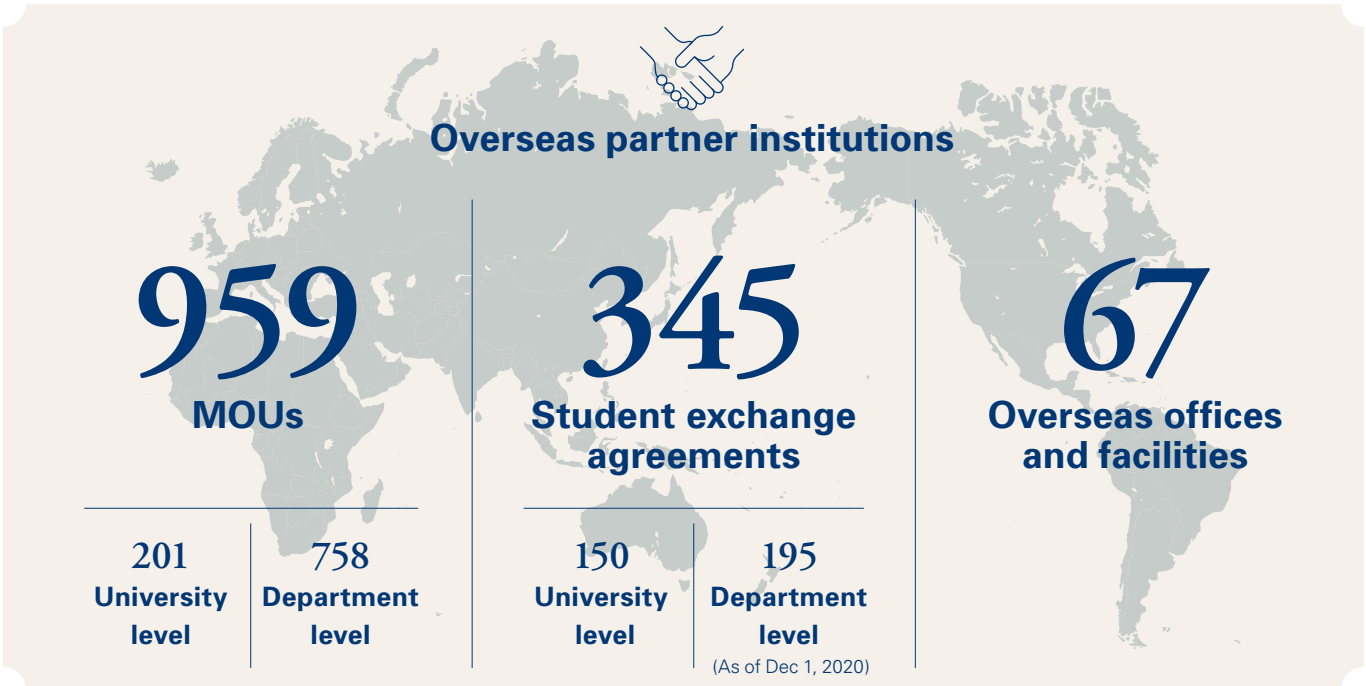


See pp. 25–26



See Facts and Figures p. 3

See Facts and Figures p. 2



See pp. 11–12 of this brochure and Facts and Figures pp. 7–10, 14–15

(As of May 1, 2021)

Current Initiatives at Kyoto University

Designated National University (DNU) Initiatives at Kyoto University

In 2017, Kyoto University was selected by Japan's Ministry of Education, Culture, Sports, Science and Technology (MEXT) as a Designated National University (DNU). DNUs are expected to implement effective strategic initiatives to create a "virtuous cycle" that brings in talented human resources, strengthens research capabilities, and garners the acknowledgement and support of society. Each DNU sets its own timeline for the achievement of its initiatives. Kyoto University's DNU initiatives are detailed below.

1. A flexible and dynamic approach to knowledge creation

Advancing the frontiers of interdisciplinary research and enhancing international collaboration

- Leveraging the university's unique strengths, the **Kyoto University Institute for Advanced Study (KUIAS)** promotes cutting-edge research led by internationally renowned researchers, including **Prof. Mitinori Saitou**, director of the Institute for the Advanced Study of Human Biology (ASHBi), who was awarded the Imperial Prize and the Japan Academy Prize in 2020, and **Prof. Emeritus Masaki Kashiwara**, who was awarded the Order of the Sacred Treasure, Gold and Silver Star in 2020.
- The **Kyoto Innovation Center for Next Generation Clinical Trials and iPS Cell Therapy (Ki-CONNECT)** was established within the Kyoto University Hospital to quickly and effectively connect cutting-edge research in Japan and abroad with clinical development, invigorate healthcare development, and promote medical innovation.
- As of the end of FY 2020, Kyoto University has established a total of 11 on-site laboratories through its **On-site Laboratory Initiative**. (See P. 13 for details.)

2. Generating a high-level and diverse flow of talent

Promoting international mobility by students, researchers, and staff

- The **Hakubi Project** is an initiative to foster early-career researchers by providing them with an ideal environment to fully devote themselves to their research for five years. As of FY 2020, the university has employed 181 researchers through the project. Approximately 71% of researchers who have completed the program have gone on to attain tenured or tenure-track positions at a university or research institution in Japan or overseas.
- The **Kyoto University International Undergraduate Program (Kyoto iUP)** was launched to facilitate the enrollment of talented and motivated international undergraduate students. (See P. 14 for details.)

3. Exploring new forms of social engagement

Developing new strategies to maximize the social impact of research and education through industry-government-academia collaboration

- The **Open Innovation Institute** was established in July 2019 as a center for the planning and implementation of large-scale research collaboration on an organization-to-organization basis. The institute serves as a mediator between companies and faculty members, which reduces the project management burden on faculty. By developing an incentive system for faculty members making efforts to promote large-scale research collaboration, the institute also aims to attract collaborative research projects, and increase their scale. (See P. 10 for details.)
- The **Unit of Kyoto Initiatives for the Humanities and Social Sciences** was established to conduct world-leading interdisciplinary research in humanities and social sciences fields. Research outcomes are disseminated through the unit's symposiums and publications.

4. KyotoU's world-class management style

- The university has established a **provost system** to enhance its governance. The Strategic Council, headed by the provost, facilitates the swift and effective implementation of DNU initiatives.
- The university is enhancing the functions of its **Institutional Research Office** and the **Kyoto University Research Administration Office (KURA)** to promote evidence-based management with an international outlook.

www.kyoto-u.ac.jp/en/about/operation/designated

Developing the "KyotoU Model" and Promoting Innovation through Industry-Academia Collaboration

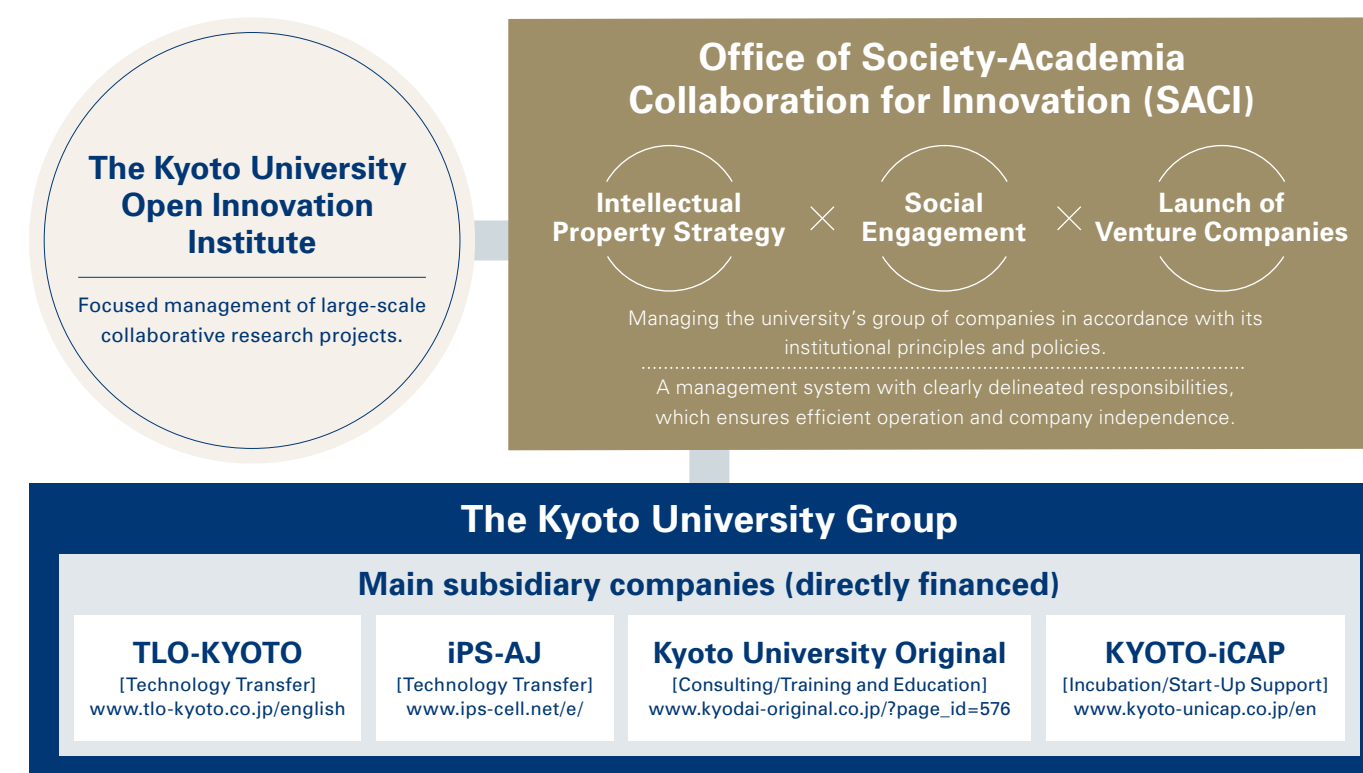
In accordance with its institutional mission and management policies, Kyoto University has been accelerating the development of the "**KyotoU Model**" for industry-government-academia collaboration. The model seeks to create new and large-scale businesses through practical cooperation between the **Office of Society-Academia Collaboration for Innovation (SACI)** and four university subsidiary companies: **Kyoto University Original Co., Ltd.** (Consulting/Training and Education), **TLO-KYOTO Co., Ltd.** (Technology Transfer), **iPS Academia Japan, Inc.** (Technology Transfer), and **Kyoto University Innovation Capital Co., Ltd.** (Incubation/Start-Up Support).

Additionally, the **Kyoto University Open Innovation Institute** was established in July 2019, as part of the university's efforts to promote industry-academia collaboration as a DNU. The new institute seeks to promote the use of research outcomes for the benefit of society and advance innovation through the enhancement and acceleration of organization-to-organization research collaboration with industries. The institute is developing an integrated management system for industry-academia collaboration, including large-scale research collaboration. It also provides support for the practical application and commercialization of the knowledge "seeds" generated by the university's researchers, while maintaining an awareness of pressing societal issues and exploring the true "needs" of industries. Through these efforts, the university advances creative research and education, and promotes innovation in cooperation with industry. The university will continue to promote industry-government-academia collaboration on an organization-to-organization basis, both in Japan and overseas.

Kyoto University Open Innovation Institute
www.oi.kyoto-u.ac.jp/en/

Office of Society-Academia Collaboration for Innovation
www.saci.kyoto-u.ac.jp/en

The KyotoU Model of Industry-Government-Academia Collaboration Organizational Chart



Global Engagement

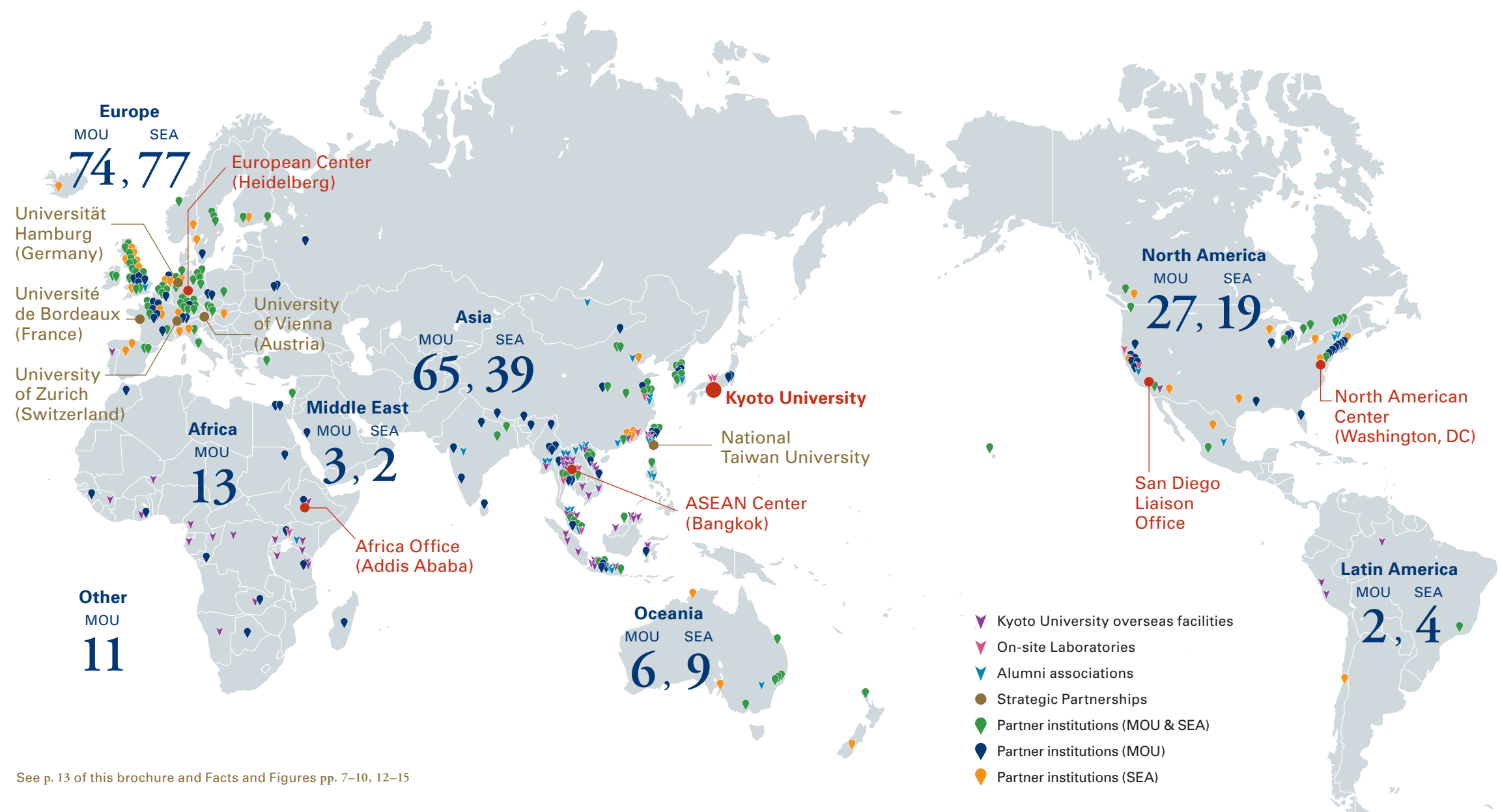
International Partners/Overseas Offices and Facilities

Kyoto University connects with the global community in diverse ways: through academic cooperation and partnerships, its overseas facilities, multilateral networks, and its alumni associations in various countries. International partners are an essential asset to the university, contributing to the development of its research and education endeavors and enriching its activities with multicultural diversity.

Research fieldwork sites at locations around the world are also a part of the university's international network, providing a foundation for local engagement and cooperation.

The university's overseas offices serve as its bridges to key regions around the world, implementing international outreach initiatives that capitalize on the unique qualities of those regions and providing support for researchers stationed overseas. Currently, the university has overseas centers in Heidelberg (Germany), Bangkok (Thailand), and Washington, DC (USA).

Kyoto University is itself an international hub where researchers from around the world gather to share and disseminate knowledge, promote research and technology transfer, and above all, connect with people who share their passions.



www.kyoto-u.ac.jp/en/global/global_partners

See p. 13 of this brochure and Facts and Figures pp. 7–10, 12–15

Overseas offices and facilities

67

Strategic Partnerships

5

On-site Laboratories

11

University-level memoranda (MOU)

201

Overseas alumni associations

30

Student exchange agreements (SEA)

150

(As of May 1, 2021)

Alumni Associations

Kyoto University maintains an expanding network of former students, researchers, and academic staff through its alumni associations. Currently, there are approximately 120 alumni associations in Japan and overseas.

The university promotes networking opportunities among its alumni around the world, and each regional association also plays a key role—bringing together people with shared personal experiences and a shared affection for their alma mater.

www.kyoto-u.ac.jp/en/alumni



On-site Laboratory Initiative

“On-site laboratories” are locally managed laboratories established collaboratively by Kyoto University faculties/departments and overseas partners. The initiative aims to promote world-leading advanced research, increase its recruitment of talented international students, and expand its collaboration with industrial partners. Through these efforts Kyoto University seeks to strengthen the institutional infrastructure that enables it to be a key player in international academia and ranked among the world’s leading universities. Eleven on-site laboratories have been established to date. The laboratories’ promotion of new international research collaboration and collaboration with industry has a positive ripple effect on the university’s education efforts, including the launch of new double degree programs with partner universities.

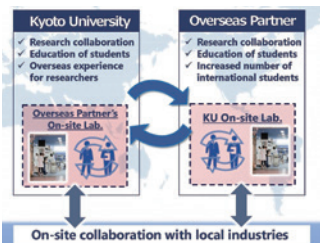
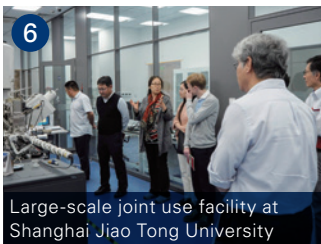
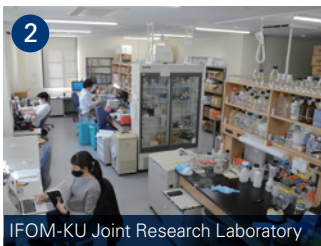
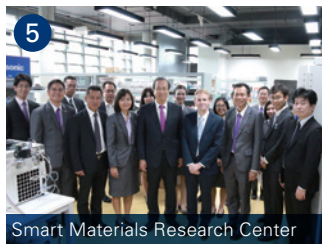
www.kyoto-u.ac.jp/en/about/operation/designated/on-site-laboratories



On-site Laboratories

- 1 Kyoto University Research Center San Diego, USA
- 2 IFOM-KU Joint Research Laboratory, Japan
- 3 Kyoto University-Tsinghua University Cooperative Research and Education Center for Environmental Technology, China
- 4 Kyoto University On-site Laboratory at Mahidol University for Educational and Research Collaboration in Environmental Studies, Thailand
- 5 Smart Materials Research Center, Thailand
- 6 Kyoto University Shanghai Lab, China
- 7 Center for Advanced Genomic Field Science, Uganda
- 8 iPS Cell Research Center at Gladstone Institutes, USA
- 9 Center for Integrated Biosystems, Taiwan
- 10 Quantum Nano Medicine Research Center, Japan
- 11 Laboratory for Green Porous Materials, Singapore

See Facts and Figures pp. 12–13

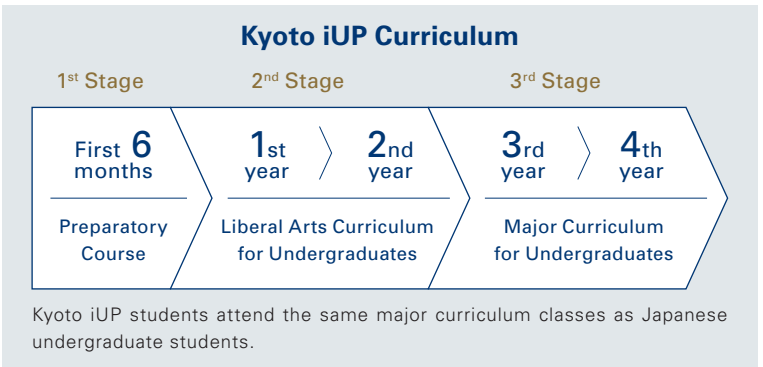
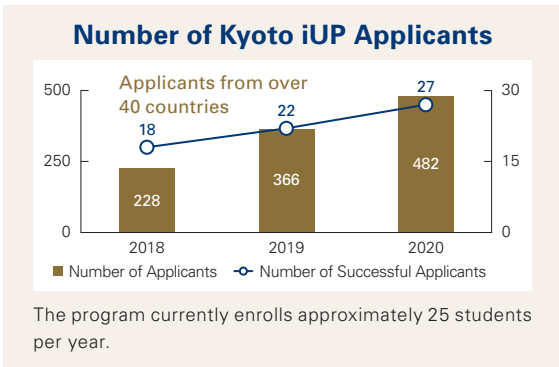


Kyoto University International Undergraduate Program (Kyoto iUP)

The Kyoto University International Undergraduate Program (Kyoto iUP) has been designed to minimize the language and financial hurdles that often prevent talented international students from pursuing study, and ultimately careers, in Japan. It is a 4.5-year international scholarship program comprising a six-month preparatory course followed by four years of undergraduate study. A key feature of the program is that no Japanese language proficiency is required at the outset, as the program provides an intensive Japanese language component. Admission and tuition fees are exempted, and students receive a monthly scholarship of up to JPY 120,000 for the 4.5 years of the program.



In the first two years of the main program (following the six-month preparatory course), students take liberal arts courses and fundamental courses in their respective majors, which are taught in English and/or Japanese. The final two years of the program focus on specific subjects in the students’ majors, which are taught mainly, or exclusively, in Japanese. The international iUP students attend the same classes as regular Japanese undergraduate students, which imbues the classes with a rich multicultural component. Upon graduation, students are awarded a bachelor’s degree in their chosen major. Companies and organizations in the private sector provide various forms of support for the program, including support for student scholarships.



Student Voices



Montanez Marjana Ysabella Oabel

Affiliation: 1st year of bachelor course, Undergraduate School of Industrial Chemistry, Faculty of Engineering
Country of Origin: Philippines

When I told my friends I would be studying in Japan, many of them were shocked. They knew I didn't know any Japanese, and were worried about me living alone in a foreign country. But to me, those were the precise reasons why I chose Kyoto University. Of course, it was also obvious to choose one of the best chemical research institutions on the planet to achieve my goal of becoming a researcher. However, I think the true value of the iUP program is in what it helped me discover about myself. True to iUP's slogan of “UPgrade yourself,” I thought that plunging headfirst into a completely new environment—language, culture, way of living—would be an exciting way to improve myself. Just six months as an iUP student has taught me so much—not only about Japanese and academic subjects, but about living life in general.



Fauzan Abdul Hamid

Affiliation: 1st year of bachelor course, Faculty of Economics
Country of Origin: Indonesia

For me, choosing a university means not only choosing what kind of classrooms I will be studying in, but also what kind of city I will be living in. In that regard, I can hardly think of any place easier to live in than Kyoto. The pace of life here is relaxed, and people do smile and make small talk (unlike the stereotypical image of Japan). And whenever you miss the city buzz, you can always hop on the bus downtown. What I really like about my iUP friends is the diversity of experiences and knowledge that they have. An international environment, naturally, exposes us to different perspectives, but it doesn't stop there.

Double and Joint Degree Programs

Kyoto University offers double and joint degree programs in diverse fields that provide students with advanced value-added study opportunities that cannot be provided by a single university.



Graduate School of Letters

Transcending national and cultural borders to open the door to a transcultural research journey.

Joint master's degree: Heidelberg University
Double doctoral degree: École des Hautes Études en Sciences Sociales (EHESS)

Graduate School of Economics

Global markets, local creativity—cultivating world-class researchers in the field of economics and business.

Double doctoral degree: University of Glasgow
Joint master's degree: University of Glasgow, University of Barcelona

Graduate School of Medicine

Training data scientists who will lead the future healthcare, disease prevention, and therapy development through multi-dimensional analysis of the big data related to human life.

Joint doctoral degree: McGill University

Graduate School of Science

Pursuing a new mathematical science field related to quantum information theory (QIT).

Double doctoral degree: École Normale Supérieure de Lyon

Graduate School of Medicine School of Public Health

Providing students with advanced knowledge and skills to conduct global research in the field of public health.

Double master's degrees (Professional): University of Malaya, National Taiwan University, Chulalongkorn University, Mahidol University

Graduate School of Agriculture

Agricultural sciences for the global future of life, food, and the environment.

Double master's degrees: IPB University (Bogor Agricultural University), Gadjah Mada University, Institut Teknologi Bandung, National Taiwan University, Kasetsart University

Graduate School of Global Environmental Studies

Establishing a new field of global environmental sustainability studies that combines the natural sciences, social sciences, and the humanities.

Double master's degrees: Mahidol University, IPB University (Bogor Agricultural University), Tsinghua University

Graduate School of Energy Science

Global challenges for secured energy, carbon neutrality, sustainability, and affordability.

Double master's degrees: University of Malaya, Chulalongkorn University, King Monkhut's University of Technology Thonburi
Double doctoral degree: Zhejiang University, Université de Bordeaux

Graduate School of Management

Adding a new dimension to business management studies to cultivate global business leaders.

Double professional degrees: National Taiwan University, Cornell University
Double master's degree: Universität Hamburg

Student Mobility

Kyoto University provides a number of short-term student mobility programs (both incoming and outgoing). The following are some selected examples.

Short-Term Inbound Program



Kyoto Summer/Spring Program

The Kyoto Summer/Spring Program is an annual short-term program open to both students from international partner institutions and domestic students enrolled at Kyoto University. The program is held jointly by the Kyoto University Institute for Liberal Arts and Sciences (ILAS) and the Kyoto University Asian Studies Unit (KUASU). Students can choose to attend classes taught mainly in English or mainly in Japanese, and can experience Kyoto University's cutting-edge research activities, while deepening their understanding of Japanese culture, language, and society.

www.z.k.kyoto-u.ac.jp/summer-spring-program/



The Amgen Scholars Program

The Amgen Scholars Program is a short summer program that provides scholarships for undergraduate students from around the world to engage in diverse cutting-edge science research at leading academic institutions, including Kyoto University. The program aims to foster the next generation of innovators by providing increased opportunities for students pursuing careers in science.

Short-Term Outbound Program

ILAS Seminar (Overseas)



The ILAS Seminar (Overseas) provides students with the opportunity to engage in hands-on training overseas under the close guidance of faculty members, and

to learn about the history, geography, and culture of the destination country or region.

Kingfisher Global Leadership Program



The Kingfisher Global Leadership Program is a US study abroad program for graduate and undergraduate students pursuing international careers.



















The program provides students with opportunities to participate in lectures and discussions, and to visit international organizations (such as the World Bank, NASA, and the National Institutes of Health), as well as local companies in Washington, DC.

Undergraduate Faculties and Graduate Schools

Undergraduate Faculties

 Integrated Human Studies 総合人間学部 www.h.kyoto-u.ac.jp/index_e.php	 Economics 経済学部 www.econ.kyoto-u.ac.jp/en	 Engineering 工学部 www.t.kyoto-u.ac.jp/en
 Letters 文学部 www.bun.kyoto-u.ac.jp/en	 Science 理学部 www.sci.kyoto-u.ac.jp/en	 Agriculture 農学部 www.kais.kyoto-u.ac.jp/english
 Education 教育学部 www.educ.kyoto-u.ac.jp/en	 Medicine 医学部 www.med.kyoto-u.ac.jp/en	
 Law 法学部 law.kyoto-u.ac.jp/english	 Pharmaceutical Sciences 薬学部 www.pharm.kyoto-u.ac.jp/en	

Graduate Schools


 Letters 文学研究科 www.bun.kyoto-u.ac.jp/en	 Pharmaceutical Sciences 薬学研究科 www.pharm.kyoto-u.ac.jp/en	 Informatics 情報学研究科 www.i.kyoto-u.ac.jp/en
 Education 教育学研究科 www.educ.kyoto-u.ac.jp/en	 Engineering 工学研究科 www.t.kyoto-u.ac.jp/en	 Biostudies 生命科学研究科 www.lif.kyoto-u.ac.jp/e
 Law 法学研究科 law.kyoto-u.ac.jp/english	 Agriculture 農学研究科 www.kais.kyoto-u.ac.jp/english	 Advanced Integrated Studies in Human Survivability (GSAIS) 総合生存学館 www.gsais.kyoto-u.ac.jp/en-top
 Economics 経済学研究科 www.econ.kyoto-u.ac.jp/en	 Human and Environmental Studies 人間・環境学研究科 www.h.kyoto-u.ac.jp/index_e.php	 Global Environmental Studies (GSGES) 地球環境学堂・地球環境学舎 www2.ges.kyoto-u.ac.jp/en
 Science 理学研究科 www.sci.kyoto-u.ac.jp/en	 Energy Science エネルギー科学研究科 www.energy.kyoto-u.ac.jp/en	 Government 公共政策連携研究部・公共政策教育部 www.sg.kyoto-u.ac.jp/sg/?lang=en
 Medicine 医学研究科 www.med.kyoto-u.ac.jp/en	 Asian and African Area Studies (ASAFAS) アジア・アフリカ地域研究研究科 www.asafas.kyoto-u.ac.jp/en	 Management 経営管理研究部・経営管理教育部 www.gsm.kyoto-u.ac.jp/en

Kyoto University degree system



Note: Some faculties have different systems. Please refer to the websites of individual faculties and graduate schools for further details.

Kyoto University International Undergraduate Program (Kyoto iUP)



Kyoto iUP is a 4.5-year program comprising a six-month preparatory course followed by four years of undergraduate study. Japanese language proficiency is not required at the outset, as the program provides intensive Japanese language classes. Upon graduation, students are awarded a bachelor's degree in their selected major.

www.iup.kyoto-u.ac.jp/

See p. 14

English-Taught Undergraduate Program



Engineering
Undergraduate International Course Program of Civil Engineering

www.s-ge.t.kyoto-u.ac.jp/int/en

English-Taught Graduate Programs

 Economics International Graduate Programme for East Asia Sustainable Economic Development Studies www.econ.kyoto-u.ac.jp/kueac	 Energy Science International Energy Science Course www.energy.kyoto-u.ac.jp/en/education/course-overview
 Science International Course in Primatology and Wildlife Research www.cicasp.pri.kyoto-u.ac.jp	 Informatics International Course in Intelligence Science and Technology International Course in Social Informatics International Course in Communications and Computer Engineering www.i.kyoto-u.ac.jp/en/introduction/g30.html
 Engineering International Course in Management of Civil Infrastructure in the Department of Civil and Earth Resources Engineering www.ce.t.kyoto-u.ac.jp/mci/en International Course in Urban and Regional Development in the Department of Urban Management www.um.t.kyoto-u.ac.jp/urd/en Integrated Engineering Course, Human Security Engineering Field hse.gcoe.kyoto-u.ac.jp/index.html	 Biostudies/Medicine Global Frontier in Life Science www.lif.kyoto-u.ac.jp/Global_frontier_in_life_science/index.html
	 Global Environmental Studies International Environmental Management Program www2.ges.kyoto-u.ac.jp/en/activities/educational-activities/iemp
	 Management International Business Administration Program International Project Management Program Kyoto-Cornell International Collaborative Degree Opportunity www.gsm.kyoto-u.ac.jp/en
 Agriculture Special Course in Agricultural Sciences – For the Global Future of Life, Food and the Environment www.kais.kyoto-u.ac.jp/english/global30	

Research Institutes, Centers, and Other Organizations

Research Institutes



Institute for Chemical Research (ICR)
化学研究所
www.kuicr.kyoto-u.ac.jp/sites/icr



Institute for Research in Humanities
人文科学研究所
www.zinbun.kyoto-u.ac.jp/english/



Institute for Frontier Life and Medical Sciences (inFront)
ウイルス・再生医科学研究所
www.infront.kyoto-u.ac.jp/?lang=en



Institute of Advanced Energy (IAE)
エネルギー理工学研究所
www.iae.kyoto-u.ac.jp/new-iae/en/



Research Institute for Sustainable Humanosphere (RISH)
生存圏研究所
www.rish.kyoto-u.ac.jp/?lang=en



Disaster Prevention Research Institute (DPRI)
防災研究所
www.dpri.kyoto-u.ac.jp/en



Yukawa Institute for Theoretical Physics (YITP)
基礎物理学研究所
www.yukawa.kyoto-u.ac.jp/en-GB



Kyoto Institute of Economic Research (KIER)
経済研究所
www.kier.kyoto-u.ac.jp/en/



Research Institute for Mathematical Sciences (RIMS)
数理解析研究所
www.kurims.kyoto-u.ac.jp/en/index.html



Institute for Integrated Radiation and Nuclear Science (KURNS)
複合原子力科学研究所
www.rri.kyoto-u.ac.jp/en



Primate Research Institute (PRI)
霊長類研究所
www.pri.kyoto-u.ac.jp/index.html



Center for Southeast Asian Studies (CSEAS)
東南アジア地域研究研究所
kyoto.cseas.kyoto-u.ac.jp/en/



Center for iPS Cell Research and Application (CiRA)
iPS細胞研究所
www.cira.kyoto-u.ac.jp/e

Social Engagement Activities by Kyoto University Research Institutes

Kyoto University's research institutes actively engage in a range of diverse social engagement activities. One example is the Uji Open Campus. Uji Campus is home to many of Kyoto University's research institutes in the natural sciences and energy-related fields, and the open campus is held annually to provide the general public with an opportunity to see the institutes' activities firsthand. The open campus includes activities that can be enjoyed by people of all ages, including small children. Activities include lectures by faculty members, an exhibition introducing the various research institutes on campus, and several research facilities and laboratories that open their doors to the public. In 2020, due to the novel coronavirus pandemic, the event was held online as "VIRTUAL Uji Campus 2020." The event's website attracted over 3,000 visitors from 29 different countries.

www.uji.kyoto-u.ac.jp/english/index.html
www.jimu.uji.kyoto-u.ac.jp/open-campus/2020/ (Japanese only)



Centers and Other Organizations



Academic Center for Computing and Media Studies (ACCMS)
学術情報メディアセンター
www.media.kyoto-u.ac.jp/accms_web/en/



Center for Ecological Research (CER)
生態学研究センター
www.ecology.kyoto-u.ac.jp/en/index.html



Wildlife Research Center (WRC)
野生動物研究センター
www.wrc.kyoto-u.ac.jp/en



Center for the Promotion of Excellence in Higher Education (CPEHE)
高等教育研究開発推進センター
www.highedu.kyoto-u.ac.jp/en



The Kyoto University Museum
総合博物館
www.museum.kyoto-u.ac.jp/index_e.htm



Field Science Education and Research Center (FSERC)
フィールド科学教育研究センター
fserc.kyoto-u.ac.jp/wp/english



Fukui Institute for Fundamental Chemistry (FIFC)
福井謙一記念研究センター
www.fukui.kyoto-u.ac.jp



Kokoro Research Center
こころの未来研究センター
kokoro.kyoto-u.ac.jp/en2



Institute for Liberal Arts and Sciences (ILAS)
国際高等教育院
www.z.k.kyoto-u.ac.jp



Agency for Health, Safety and Environment
環境安全保健機構
www.esho.kyoto-u.ac.jp



Institute for Information Management and Communication (IIMC)
情報環境機構
www.iimc.kyoto-u.ac.jp/en



Kyoto University Library Network
図書館機構
www.kulib.kyoto-u.ac.jp/?lang=en



Office of Society-Academia Collaboration for Innovation (SACI)
産官学連携本部
www.saci.kyoto-u.ac.jp/en



Open Innovation Institute
オープンイノベーション機構
www.oi.kyoto-u.ac.jp/en



International Strategy Office
国際戦略本部
u.kyoto-u.jp/istrategy



General Student Support Center
学生総合支援センター
www.gssc.kyoto-u.ac.jp



Kyoto University Archives
大学文書館
kua1.archives.kyoto-u.ac.jp/ja/english.html



Kyoto University Institute for Advanced Study (KUIAS)
高等研究院
kuias.kyoto-u.ac.jp/e

Institute for Integrated Cell-Material Sciences (iCeMS)
物質-細胞統合システム拠点
www.icems.kyoto-u.ac.jp/en

Institute for the Advanced Study of Human Biology (ASHBi)
ヒト生物学高等研究拠点
ashbi.kyoto-u.ac.jp



Center for African Area Studies (CAAS)
アフリカ地域研究資料センター
www.africa.kyoto-u.ac.jp/eng/enindex.html



The Hakubi Center for Advanced Research
白眉センター
www.hakubi.kyoto-u.ac.jp/eng/eng.html



Center for the Promotion of Interdisciplinary Education and Research (C-PiER)
学際融合教育研究推進センター
www.cpier.kyoto-u.ac.jp

*Please note: the main C-PiER website is in Japanese, but many of the units have websites in English.



Center for Educational Program Promotion in Graduate School
大学院横断教育プログラム推進センター
www.ceppings.kyoto-u.ac.jp/en/



Kyoto University Research Coordination Alliance (KURCA)
研究連携基盤
web.kurca.kyoto-u.ac.jp/



Kyoto University Research Administration Office (KURA)
学術研究支援室
www.kura.kyoto-u.ac.jp/en/



Center for Educational Outreach and Admissions
高大接続・入試センター
www.kyoto-u.ac.jp/ja/admissions/koudai/kuac



Gender Equality Promotion Office
男女共同参画推進本部
www.cwr.kyoto-u.ac.jp/eng/

Distinctive Education and Research Facilities



Institute for Liberal Arts and Sciences (ILAS)

By integrating the efforts of diverse faculties and departments throughout the university, ILAS plans and implements the courses that are common to all of the university's undergraduate programs, such as courses in the liberal arts, foreign languages, and introductory courses on basic sciences.

This ensures that the university's undergraduate programs are well balanced and provide a rich liberal arts and sciences component to complement their major fields of specialization. It also enables the programs to better meet students' individual interests and career plans.

The institute provides over two hundred courses entirely in English, helping Japanese students to cultivate an international mindset and providing international students with flexible curricula options. ILAS Seminars for first-year students are designed to ensure a smooth transition from high school to university education. The approach taken by ILAS helps students to broaden their horizons, develop new interests, and ultimately become more versatile and adaptable.

www.z.k.kyoto-u.ac.jp



Kyoto University Library Network

Kyoto University Library Network plays a central role in the accumulation and curation of the university's intellectual assets, and in facilitating their utilization for education, research, and community engagement. Its collection comprises over 7.2 million volumes, including a designated national treasure and other rare materials.

In addition to a wide range of journals, books, and databases, Kyoto University Library Network also provides online access to the university's research information repository and its digital archive of rare materials. The Main Library building includes versatile facilities to support study and research, such as the Learning Commons (group-work space) and the Media Commons (multimedia facility).

www.kulib.kyoto-u.ac.jp/?lang=en



Kyoto University Hospital

Established in 1899, Kyoto University Hospital has trained leading experts in diverse medical fields for over a century, and made significant contributions to the advancement of medicine and healthcare in Japan. As a government-certified institution, it provides a wide array of advanced treatments, and currently comprises 34 clinical departments, 15 cross-departmental clinical divisions, 17 central facilities divisions, 13 clinical management support facilities, the 7 divisions of the Institute for Advancement of Clinical and Translational Science (iACT), and 7 clinical research and education divisions.

Functioning as both a cutting-edge medical research facility and a community-oriented healthcare institution, the hospital's mission focuses on the three areas of medical care, research, and education. In fulfilling its mission, the hospital provides high-quality patient-oriented medical care (including a state-of-the-art Cancer Center), develops innovative new medical treatments in cooperation with other research facilities (such as the university's Center for iPS Cell Research and Application [CiRA]), and fosters conscientious and compassionate healthcare professionals.

www.kuhp.kyoto-u.ac.jp/english

The Kyoto University Museum

The Kyoto University Museum is a center for research based on specimens accumulated by the university's scholars throughout the course of its long history. To this day, it continues to advance groundbreaking new research utilizing its expanding collection, which currently comprises 2.6 million items that are relevant to a wide spectrum of fields—from cultural sciences, to natural history, to engineering. The museum is open to students and the public, exhibiting highlights from its collection and showcasing the university's research activities.

The museum also serves as a bridge connecting the university with the community—through exhibitions, lectures, and other events. It is also the coordinating institution of a worldwide network of university museums, and has organized several international symposia focusing on the new research field of museum science.

www.museum.kyoto-u.ac.jp/index_e.htm



Support Services for International Researchers and Students



Information and Advising Services

Information and advising services are available for international researchers and students who have concerns about their studies or about daily life in Japan.

International Student Advising Room

(For advice on academic studies and life in Japan)

www.kyoto-u.ac.jp/en/education-campus/facilities/international-student-advising.html

Kyoto University International Service Office

(For information about visas, accommodation, and daily life)

kuiso.oc.kyoto-u.ac.jp/top/en



Cultural Exchange and Language Learning Opportunities

Kyoto University frequently holds events to promote intercultural exchange in which students can participate, and various forms of support are provided for students and researchers seeking to improve their Japanese language skills.

Student Lounge KI-ZU-NA

www.kyoto-u.ac.jp/en/education-campus/facilities/student-lounge-kizuna

Education Center for Japanese Language and Culture

www.z.k.kyoto-u.ac.jp/introduction/education-center-for-japanese

Health Services

The Kyoto University Health Service provides medical and mental health services for students, faculty, and staff, including consultation, treatment, and health checkups. In addition to the clinic on Yoshida Campus, there are also branch clinics on the Katsura and Uji Campuses.

www.hoken.kyoto-u.ac.jp/en



Accommodation

Kyoto University provides accommodation for international researchers and students at

several locations close to its campuses, including two new dormitories near Yoshida Campus that opened in October 2019. The two new dormitories increase the number of rooms provided exclusively for international researchers and students by approximately 130, bringing the total number of rooms to approximately 550.

kuiso.oc.kyoto-u.ac.jp/housing/facilities/en



Support in Applying for Research Grants

The Kyoto University Research Administration Office (KURA) provides faculty members with comprehensive support in acquiring grants. Staffed by a team of knowledgeable experts in research development, KURA organizes seminars to provide information about available funding, and assists researchers with drafting proposals.

Kyoto University Research Administration Office (KURA)

www.kura.kyoto-u.ac.jp/en/

Support for Childcare and Work-Life Balance

The Gender Equality Promotion Center provides various support services, including:

- Childcare support
- Care for sick children
- Support to maintain a healthy work-life balance

(Please contact the center in advance to check eligibility and other requirements)

Gender Equality Promotion Center

www.cwr.kyoto-u.ac.jp/eng/



Kyoto University's Response to the Novel Coronavirus (COVID-19)

At the time of this booklet's publication, university activities have been significantly affected by the novel coronavirus (COVID-19) pandemic. Please see the following webpage for updated information on the pandemic and Kyoto University's response measures:

www.kyoto-u.ac.jp/en/about/safety/coronavirus.html

Campuses



Yoshida (Main Campus)

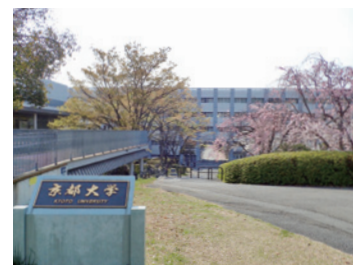
Located near the center of Kyoto City, Yoshida Campus is close to many scenic and natural spots, such as the famous Philosopher's Walk and the Kyoto Imperial Palace. As the university's main campus, it has long been a familiar landmark for Kyoto citizens, and well-known as a vibrant, bustling hub of student life. Buildings on the campus present a variety of architectural styles—from traditional Japanese wood and brick buildings dating back to the time of the university's establishment, to modern laboratory buildings that house cutting-edge facilities.



Katsura

Katsura Campus comprises three clusters of buildings overlooking Kyoto from the hills to the west of the city. It was conceived

as a "Techno-Science Hill" for graduate studies in engineering, where technology and science come together to provide an innovative new style of education and research environment.

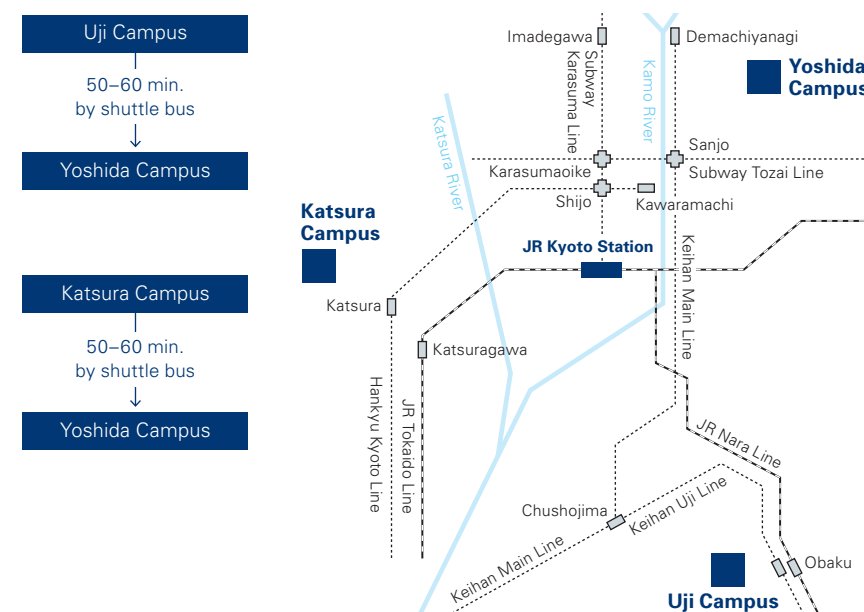


Uji

Located to the south of Kyoto City, Uji Campus is close to two UNESCO World Heritage Sites: Byōdōin Temple and Ujigami Shrine. It is

home to a number of leading research institutes and centers, including several large-scale facilities devoted to laboratory work in the natural sciences and energy-related fields.

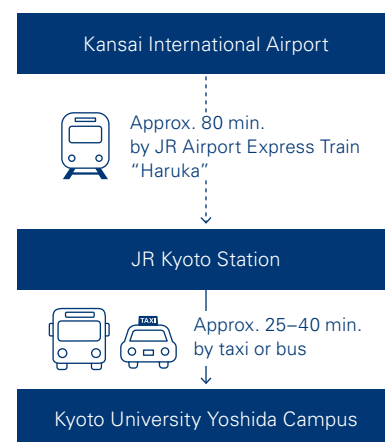
Location of the Campuses in Kyoto



Shuttle Bus Service

www.kyoto-u.ac.jp/sites/default/files/inline-files/2104-timetable-12b555c33880ef53b74abb6324a77515.pdf

Access from Kansai International Airport



www.kyoto-u.ac.jp/en/access



Facilities throughout Japan

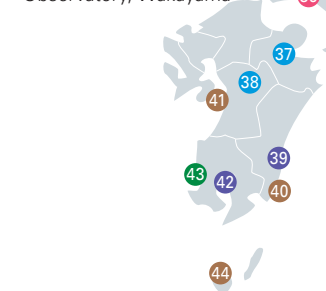
Since its establishment, Kyoto University has been renowned for its diverse fieldwork achievements. To facilitate those efforts, the university maintains a number of facilities at locations throughout Japan that serve as valuable resources for the activities of researchers.



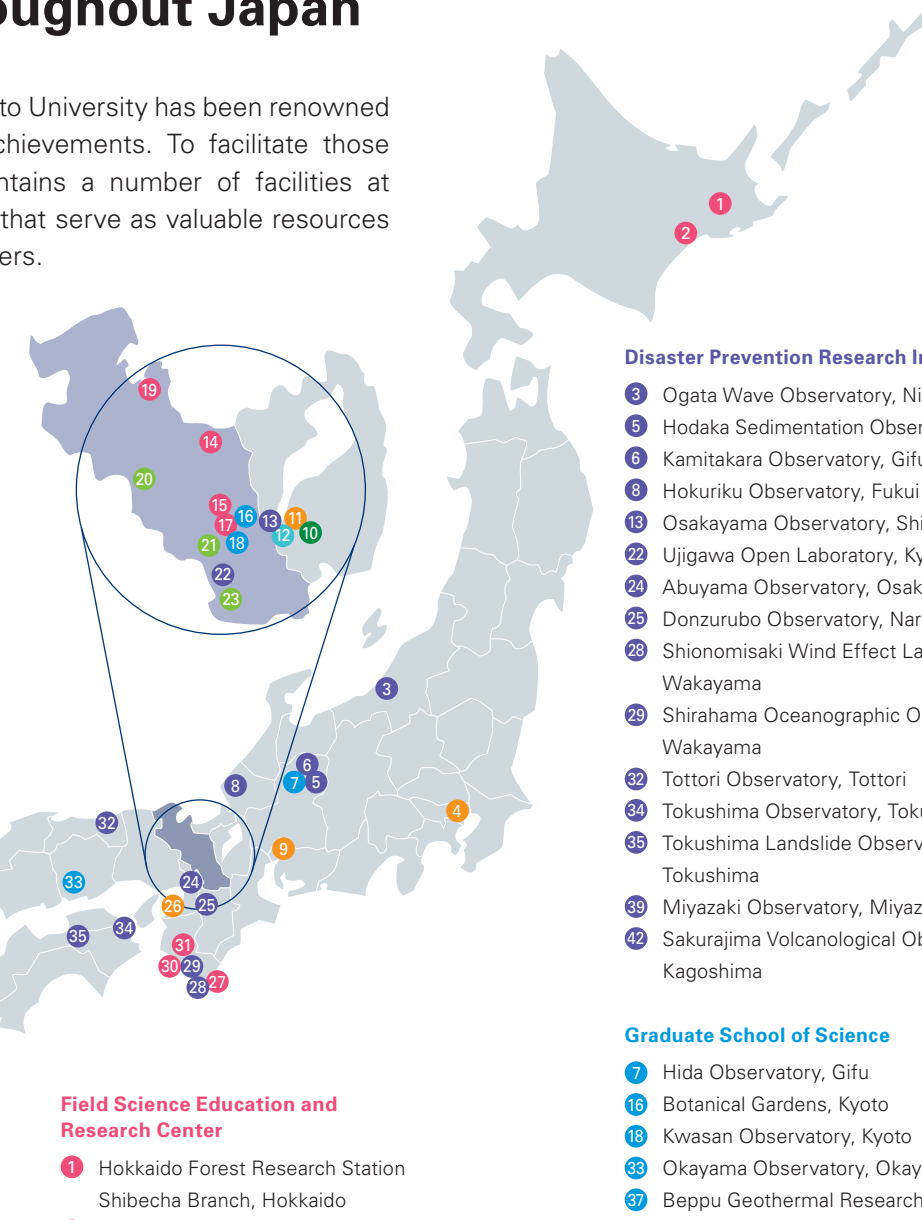
Hokkaido Forest Research Station
Shiranuka Branch, Hokkaido



Shirahama Oceanographic
Observatory, Wakayama



Sakurajima Volcanological
Observatory, Kagoshima



Kyoto: Japan's Cultural Heartland



Kyoto flourished as the capital city of Japan from 794 to 1868, and to this day, possesses a rich cultural heritage that draws visitors from around the world. It is home to 17 UNESCO World Heritage Sites, many world-famous temples and shrines, ornate gardens, and traditional festivals.

Founded on a community of skilled artisans and craftspeople versed in aesthetics developed over a millennium, modern-day Kyoto is also the birthplace of frontier technologies and international business successes. It is a city in which one can find the best of both the ancient and modern.

Students and researchers at Kyoto University find that the vibrant backdrop of Kyoto City brings constant inspiration and new discoveries in their daily lives and academic endeavors.



Bon Odori
(traditional dance)



Tea ceremony



Kintsugi
(ornamental pottery repair)

Cultural activities for international students



World's No.1 tourist destination ^{*1}
87 million tourists visited Kyoto in 2019 (3.9 million from abroad)



17 UNESCO World Heritage sites
Numerous world-famous temples, shrines, and ornate gardens



Japan's No.1 "student city"
(based on student-to-population ratio)
University students account for 10% of the city's population ^{*2}



Ranked **17th** most livable city in the world ^{*3}



Advanced technology and a tradition of enterprise

Home to many world-leading companies and a flourishing spirit of industry-government-academia collaboration

^{*1} Wanderlust Reader Travel Awards (2020)

Kyoto Prefecture Tourism Office: Tourist Survey (2019)

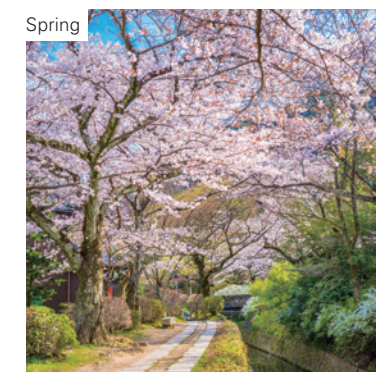
^{*2} Kyoto City Data System Promotion Office: Estimated Population (2020)

Ministry of Education, Culture, Sports, Science and Technology: School Basic Survey (2020)

^{*3} Monocle* Quality of Life Survey: Top 25 Cities (2019)



Kyoto University's Seifuso Villa, classified as an Important Cultural Property by the Government of Japan



Spring

The picturesque
Philosopher's Walk pathway in Kyoto



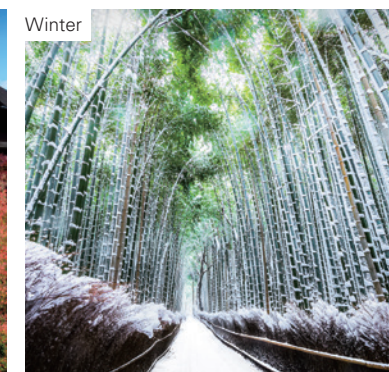
Summer

A float decorated with paper lanterns during
the Gion Festival



Autumn

Kiyomizu-dera Temple



Winter

Bamboo forest in Arashiyama

For More Information

Printed Materials



Kyoto U
Research News



Kyoto University
International Undergraduate
Program (Kyoto iUP)



Japan Gateway:
Kyoto University Top
Global Program



Kyoto University Handbook
for International Researchers



Admissions Guide
for International Applicants



Liberal Arts and Sciences
to Learn in English



Society-Academia
Collaboration Handbook



Handbook
for International Students



Overseas Offices

European Center (Heidelberg)

Email: info_eu@oc.kyoto-u.ac.jp
www.oc.kyoto-u.ac.jp/overseas-centers/eu/en

ASEAN Center (Bangkok)

Email: asean-bangkok@oc.kyoto-u.ac.jp
www.oc.kyoto-u.ac.jp/overseas-centers/asean/en

North American Center (Washington, DC)

San Diego Liaison Office (San Diego)
Email: northamericancenter@mail2.adm.kyoto-u.ac.jp
www.oc.kyoto-u.ac.jp/overseas-centers/north-america/en

Africa Office (Addis Ababa)

Email: kuao@jambo.africa.kyoto-u.ac.jp
www.africaunit.kyoto-u.ac.jp/en

International Offices on Campus

International Affairs Division

Address: Yoshida-honmachi, Sakyo-ku, Kyoto 606-8501
Email: ipromo@mail2.adm.kyoto-u.ac.jp
www.oc.kyoto-u.ac.jp/en/

International Education and Student Mobility Division

Address: Yoshida-honmachi, Sakyo-ku, Kyoto 606-8501
Email: studyku@mail2.adm.kyoto-u.ac.jp
www.kyoto-u.ac.jp/en/education-campus

Official Websites

Kyoto University Website

www.kyoto-u.ac.jp/en

Graduate Admission Guide for International Applicants

www.kyoto-u.ac.jp/en/education-campus/education-and-admissions/intl-admissions

Kyoto University on Social Media



www.instagram.com/kyotouniversity



www.facebook.com/Kyoto.Univ.E



twitter.com/KyotoU_News



Published in September 2021

Produced by the International Affairs Division, Kyoto University

Email: ipromo@mail2.adm.kyoto-u.ac.jp