

# General Information: Departments

## Undergraduate Faculties and Graduate Schools

### Undergraduate Faculties



#### Integrated Human Studies

総合人間学部

[www.h.kyoto-u.ac.jp/index\\_e.php](http://www.h.kyoto-u.ac.jp/index_e.php)



#### Economics

経済学部

[www.econ.kyoto-u.ac.jp/en](http://www.econ.kyoto-u.ac.jp/en)



#### Engineering

工学部

[www.t.kyoto-u.ac.jp/en](http://www.t.kyoto-u.ac.jp/en)



#### Letters

文学部

[www.bun.kyoto-u.ac.jp/en](http://www.bun.kyoto-u.ac.jp/en)



#### Science

理学部

[www.sci.kyoto-u.ac.jp/en](http://www.sci.kyoto-u.ac.jp/en)



#### Agriculture

農学部

[www.kais.kyoto-u.ac.jp/english](http://www.kais.kyoto-u.ac.jp/english)



#### Education

教育学部

[www.educ.kyoto-u.ac.jp/en](http://www.educ.kyoto-u.ac.jp/en)



#### Medicine

医学部

[www.med.kyoto-u.ac.jp/en](http://www.med.kyoto-u.ac.jp/en)



#### Law

法学部

[law.kyoto-u.ac.jp/english](http://law.kyoto-u.ac.jp/english)



#### Pharmaceutical Sciences

薬学部

[www.pharm.kyoto-u.ac.jp/en](http://www.pharm.kyoto-u.ac.jp/en)

### Graduate Schools



#### Letters

文学研究科

[www.bun.kyoto-u.ac.jp/en](http://www.bun.kyoto-u.ac.jp/en)



#### Pharmaceutical Sciences

薬学研究科

[www.pharm.kyoto-u.ac.jp/en](http://www.pharm.kyoto-u.ac.jp/en)



#### Informatics

情報学研究科

[www.i.kyoto-u.ac.jp/en](http://www.i.kyoto-u.ac.jp/en)



#### Education

教育学研究科

[www.educ.kyoto-u.ac.jp/en](http://www.educ.kyoto-u.ac.jp/en)



#### Engineering

工学研究科

[www.t.kyoto-u.ac.jp/en](http://www.t.kyoto-u.ac.jp/en)



#### Biostudies

生命科学研究科

[www.lif.kyoto-u.ac.jp/e](http://www.lif.kyoto-u.ac.jp/e)



#### Law

法学研究科

[law.kyoto-u.ac.jp/english](http://law.kyoto-u.ac.jp/english)



#### Agriculture

農学研究科

[www.kais.kyoto-u.ac.jp/english](http://www.kais.kyoto-u.ac.jp/english)



#### Advanced Integrated Studies in Human Survivability (GSAIS)

総合生存学館

[www.gsais.kyoto-u.ac.jp/en-top](http://www.gsais.kyoto-u.ac.jp/en-top)



#### Economics

経済学研究科

[www.econ.kyoto-u.ac.jp/en](http://www.econ.kyoto-u.ac.jp/en)



#### Human and Environmental Studies

人間・環境学研究科

[www.h.kyoto-u.ac.jp/index\\_e.php](http://www.h.kyoto-u.ac.jp/index_e.php)



#### Science

理学研究科

[www.sci.kyoto-u.ac.jp/en](http://www.sci.kyoto-u.ac.jp/en)



#### Energy Science

エネルギー科学研究科

[www.energy.kyoto-u.ac.jp/en](http://www.energy.kyoto-u.ac.jp/en)



#### Global Environmental Studies (GSGES)

地球環境学堂・地球環境学舎

[www2.ges.kyoto-u.ac.jp/en](http://www2.ges.kyoto-u.ac.jp/en)



#### Medicine

医学研究科

[www.med.kyoto-u.ac.jp/en](http://www.med.kyoto-u.ac.jp/en)



#### Asian and African Area Studies (ASAFAS)

アジア・アフリカ地域研究研究科

[www.asafas.kyoto-u.ac.jp/en](http://www.asafas.kyoto-u.ac.jp/en)



#### Government

公共政策連携研究部・公共政策教育部

[www.sg.kyoto-u.ac.jp/sg/?lang=en](http://www.sg.kyoto-u.ac.jp/sg/?lang=en)



#### Management

経営管理研究部・経営管理教育部

[www.gsm.kyoto-u.ac.jp/en](http://www.gsm.kyoto-u.ac.jp/en)

## Kyoto University degree system



**Note:** Some faculties have different systems. Please refer to the websites of individual faculties and graduate schools for further details.

## Kyoto University International Undergraduate Program (Kyoto iUP)



Kyoto iUP is a 4.5-year program comprising a six-month preparatory course followed by four years of undergraduate study. Japanese language proficiency is not required at the outset, as the program provides intensive Japanese language classes. Upon graduation, students are awarded a bachelor's degree in their selected major.

[www.iup.kyoto-u.ac.jp/](http://www.iup.kyoto-u.ac.jp/)

See p. 13

## English-Taught Undergraduate Program



### Engineering

Undergraduate International Course Program of Civil Engineering

[www.s-ge.t.kyoto-u.ac.jp/int/en](http://www.s-ge.t.kyoto-u.ac.jp/int/en)

## English-Taught Graduate Programs



### Economics

International Graduate Programme for East Asia Sustainable Economic Development Studies

[www.econ.kyoto-u.ac.jp/kueac](http://www.econ.kyoto-u.ac.jp/kueac)



### Science

International Course in Primatology and Wildlife Research

[www.cicasp.pri.kyoto-u.ac.jp](http://www.cicasp.pri.kyoto-u.ac.jp)



### Engineering

International Course in Management of Civil Infrastructure in the Department of Civil and Earth Resources Engineering

[www.ce.t.kyoto-u.ac.jp/mci/en](http://www.ce.t.kyoto-u.ac.jp/mci/en)

International Course in Urban and Regional Development in the Department of Urban Management

[www.um.t.kyoto-u.ac.jp/urd/en](http://www.um.t.kyoto-u.ac.jp/urd/en)

Integrated Engineering Course, Human Security Engineering Field

[hse.gcoe.kyoto-u.ac.jp/index.html](http://hse.gcoe.kyoto-u.ac.jp/index.html)



### Agriculture

Special Course in Agricultural Sciences – For the Global Future of Life, Food and the Environment

[www.kais.kyoto-u.ac.jp/english/global30](http://www.kais.kyoto-u.ac.jp/english/global30)



### Energy Science

International Energy Science Course

[www.energy.kyoto-u.ac.jp/en/education/course-overview](http://www.energy.kyoto-u.ac.jp/en/education/course-overview)



### Informatics

International Course in Intelligence Science and Technology

International Course in Social Informatics

International Course in Communications and Computer Engineering

[www.i.kyoto-u.ac.jp/en/introduction/g30.html](http://www.i.kyoto-u.ac.jp/en/introduction/g30.html)



### Biostudies/Medicine

Global Frontier in Life Science

[www.lif.kyoto-u.ac.jp/e/?page\\_id=8516](http://www.lif.kyoto-u.ac.jp/e/?page_id=8516)



### Global Environmental Studies

International Environmental Management Program

[www2.ges.kyoto-u.ac.jp/en/activities/iemp](http://www2.ges.kyoto-u.ac.jp/en/activities/iemp)



### Management

International Business Administration Program

International Project Management Program

Kyoto-Cornell International Collaborative Degree Opportunity

[www.gsm.kyoto-u.ac.jp/en](http://www.gsm.kyoto-u.ac.jp/en)

## Research Institutes, Centers, and Other Organizations

### Research Institutes



#### Institute for Chemical Research (ICR)

化学研究所

[www.kuicr.kyoto-u.ac.jp/sites/icr](http://www.kuicr.kyoto-u.ac.jp/sites/icr)



#### Institute for Research in Humanities

人文科学研究所

[www.zinbun.kyoto-u.ac.jp/english/](http://www.zinbun.kyoto-u.ac.jp/english/)



#### Institute for Life and Medical Sciences (LiMe)

医生物学研究所

[www.infront.kyoto-u.ac.jp/?lang=en](http://www.infront.kyoto-u.ac.jp/?lang=en)



#### Institute of Advanced Energy (IAE)

エネルギー理工学研究所

[www.iae.kyoto-u.ac.jp/new-iae/en/](http://www.iae.kyoto-u.ac.jp/new-iae/en/)



#### Research Institute for Sustainable Humanosphere (RISH)

生存圏研究所

[www.rish.kyoto-u.ac.jp/?lang=en](http://www.rish.kyoto-u.ac.jp/?lang=en)



#### Disaster Prevention Research Institute (DPRI)

防災研究所

[www.dpri.kyoto-u.ac.jp/en/](http://www.dpri.kyoto-u.ac.jp/en/)



#### Yukawa Institute for Theoretical Physics (YITP)

基礎物理学研究所

[www.yukawa.kyoto-u.ac.jp/en-GB](http://www.yukawa.kyoto-u.ac.jp/en-GB)



#### Kyoto Institute of Economic Research (KIER)

経済研究所

[www.kier.kyoto-u.ac.jp/en/](http://www.kier.kyoto-u.ac.jp/en/)



#### Research Institute for Mathematical Sciences (RIMS)

数理解析研究所

[www.kurims.kyoto-u.ac.jp/en/index.html](http://www.kurims.kyoto-u.ac.jp/en/index.html)



#### Institute for Integrated Radiation and Nuclear Science (KURNS)

複合原子力科学研究所

[www.rri.kyoto-u.ac.jp/en](http://www.rri.kyoto-u.ac.jp/en)



#### Center for Southeast Asian Studies (CSEAS)

東南アジア地域研究研究所

[kyoto.cseas.kyoto-u.ac.jp/en/](http://kyoto.cseas.kyoto-u.ac.jp/en/)



#### Center for iPS Cell Research and Application (CiRA)

iPS細胞研究所

[www.cira.kyoto-u.ac.jp/e](http://www.cira.kyoto-u.ac.jp/e)

### Social Engagement Activities by Kyoto University Research Institutes

Kyoto University's research institutes actively engage in a range of diverse social engagement activities. One example is the Uji Open Campus. Uji Campus is home to many of Kyoto University's research institutes in the natural sciences and energy-related fields, and the open campus is held annually to provide the general public with an opportunity to see the institutes' activities firsthand. The open campus includes activities that can be enjoyed by people of all ages, including small children. Activities include lectures by faculty members, an exhibition introducing the various research institutes on campus, and several research facilities and laboratories that open their doors to the public. In 2021, due to the novel coronavirus pandemic, the event was held online as "VIRTUAL Uji Campus 2021." The event's website attracted over 1,600 visitors from 26 different countries.

[www.uji.kyoto-u.ac.jp/english/index.html](http://www.uji.kyoto-u.ac.jp/english/index.html)

[www.jimu.uji.kyoto-u.ac.jp/open-campus/2021/virtual/](http://www.jimu.uji.kyoto-u.ac.jp/open-campus/2021/virtual/) (in Japanese only)



## Centers and Other Organizations



### Academic Center for Computing and Media Studies (ACCMS)

学術情報メディアセンター

[www.media.kyoto-u.ac.jp/accms\\_web/en/](http://www.media.kyoto-u.ac.jp/accms_web/en/)



### Center for Ecological Research (CER)

生態学研究センター

[www.ecology.kyoto-u.ac.jp/en/index.html](http://www.ecology.kyoto-u.ac.jp/en/index.html)



### Wildlife Research Center (WRC)

野生動物研究センター

[www.wrc.kyoto-u.ac.jp/en](http://www.wrc.kyoto-u.ac.jp/en)



### The Kyoto University Museum

総合博物館

[www.museum.kyoto-u.ac.jp/index\\_e.htm](http://www.museum.kyoto-u.ac.jp/index_e.htm)



### Field Science Education and Research Center (FSERC)

フィールド科学教育研究センター

[fserc.kyoto-u.ac.jp/wp/english](http://fserc.kyoto-u.ac.jp/wp/english)



### Fukui Institute for Fundamental Chemistry (FIFC)

福井謙一記念研究センター

[www.fukui.kyoto-u.ac.jp](http://www.fukui.kyoto-u.ac.jp)



### Center for the Evolutionary Origins of Human Behavior (EHUB)

ヒト行動進化研究センター

[www.ehub-kyoto-u.com/en](http://www.ehub-kyoto-u.com/en)



### Institute for Liberal Arts and Sciences (ILAS)

国際高等教育院

[www.z.k.kyoto-u.ac.jp](http://www.z.k.kyoto-u.ac.jp)



### Kyoto University Division of Graduate Studies

大学院教育支援機構

[www.kugd.k.kyoto-u.ac.jp/en/](http://www.kugd.k.kyoto-u.ac.jp/en/)



### Agency for Student Support and Disability Resources

学生総合支援機構

[www.assdr.kyoto-u.ac.jp/](http://www.assdr.kyoto-u.ac.jp/)



### Agency for Health, Safety and Environment

環境安全保健機構

[www.esho.kyoto-u.ac.jp](http://www.esho.kyoto-u.ac.jp)



### Institute for Information Management and Communication (IIMC)

情報環境機構

[www.iimc.kyoto-u.ac.jp/en](http://www.iimc.kyoto-u.ac.jp/en)



### Kyoto University Library Network

図書館機構

[www.kulib.kyoto-u.ac.jp/?lang=en](http://www.kulib.kyoto-u.ac.jp/?lang=en)



### Office of Society-Academia Collaboration for Innovation (SACI)

産官学連携本部

[www.saci.kyoto-u.ac.jp/en](http://www.saci.kyoto-u.ac.jp/en)



### Open Innovation Institute

オープンイノベーション機構

[www.oi.kyoto-u.ac.jp/en](http://www.oi.kyoto-u.ac.jp/en)



### International Strategy Office

国際戦略本部

[u.kyoto-u.jp/istrategy](http://u.kyoto-u.jp/istrategy)



### Kyoto University Institute for the Future of Human Society

人と社会の未来研究院

[ifo.h.kyoto-u.ac.jp/](http://ifo.h.kyoto-u.ac.jp/)



### Kyoto University Archives

大学図書館

[kua1.archives.kyoto-u.ac.jp/ja/english.html](http://kua1.archives.kyoto-u.ac.jp/ja/english.html)



### Kyoto University Institute for Advanced Study (KUIAS)

高等研究院

[kuias.kyoto-u.ac.jp/e](http://kuias.kyoto-u.ac.jp/e)

### Institute for Integrated Cell-Material Sciences (iCeMS)

物質-細胞統合システム拠点

[www.icems.kyoto-u.ac.jp/en](http://www.icems.kyoto-u.ac.jp/en)

### Institute for the Advanced Study of Human Biology (ASHBi)

ヒト生物学高等研究拠点

[ashbi.kyoto-u.ac.jp](http://ashbi.kyoto-u.ac.jp)



### Center for African Area Studies (CAAS)

アフリカ地域研究資料センター

[www.africa.kyoto-u.ac.jp/en/](http://www.africa.kyoto-u.ac.jp/en/)



### The Hakubi Center for Advanced Research

白眉センター

[www.hakubi.kyoto-u.ac.jp/eng/eng.html](http://www.hakubi.kyoto-u.ac.jp/eng/eng.html)



### Center for the Promotion of Interdisciplinary Education and Research (C-PiER)

学際融合教育研究推進センター

[www.cpier.kyoto-u.ac.jp](http://www.cpier.kyoto-u.ac.jp)

\*Please note: the main C-PiER website is in Japanese, but many of the units have websites in English.



### Kyoto University Research Coordination Alliance (KURCA)

研究連携基盤

[web.kurca.kyoto-u.ac.jp/](http://web.kurca.kyoto-u.ac.jp/)



### Kyoto University Research Administration Office (KURA)

学術研究支援室

[www.kura.kyoto-u.ac.jp/en/](http://www.kura.kyoto-u.ac.jp/en/)



### Center for Educational Outreach and Admissions

高大接続・入試センター

[www.kyoto-u.ac.jp/ja/admissions/koudai/kuac](http://www.kyoto-u.ac.jp/ja/admissions/koudai/kuac)



### Gender Equality Promotion Office

男女共同参画推進本部

[www.cwr.kyoto-u.ac.jp/eng/](http://www.cwr.kyoto-u.ac.jp/eng/)

# General Information: Core Facilities

## Distinctive Education and Research Facilities



### Institute for Liberal Arts and Sciences (ILAS)

By integrating the efforts of diverse faculties and departments throughout the university, ILAS plans and implements the courses that are common to all of the university's undergraduate programs, such as courses in the liberal arts, foreign languages, and introductory courses on basic sciences.

This ensures that the university's undergraduate programs are well balanced and provide a rich liberal arts and sciences component to complement their major fields of specialization. It also enables the programs to better meet students' individual interests and career plans.

The institute provides over two hundred courses entirely in English, helping Japanese students to cultivate an international mindset and providing international students with flexible curricula options. ILAS Seminars for first-year students are designed to ensure a smooth transition from high school to university education. The approach taken by ILAS helps students to broaden their horizons, develop new interests, and ultimately become more versatile and adaptable.

[www.z.k.kyoto-u.ac.jp](http://www.z.k.kyoto-u.ac.jp)

### Kyoto University Library Network

The Kyoto University Library Network plays a central role in the accumulation and curation of the university's intellectual assets, and in facilitating their utilization for education, research, and community engagement. Its collection comprises over 7.3 million volumes, including a designated national treasure and other rare materials.

In addition to a wide range of journals, books, and databases, the Kyoto University Library Network also provides online access to the university's research information repository and its digital archive of rare materials. The Main Library building includes versatile facilities to support study and research, such as the Learning Commons (group-work space) and the Media Commons (multimedia facility).

[www.kulib.kyoto-u.ac.jp/?lang=en](http://www.kulib.kyoto-u.ac.jp/?lang=en)







## Kyoto University Hospital

Established in 1899, Kyoto University Hospital has trained leading experts in diverse medical fields for over a century, and made significant contributions to the advancement of medicine and healthcare in Japan. As a government-certified institution, it provides a wide array of advanced treatments, and currently comprises 34 clinical departments, 20 cross-departmental clinical divisions, 15 central facilities divisions, 13 clinical management support facilities, the 7 divisions of the Institute for Advancement of Clinical and Translational Science (iACT), and 7 clinical research and education divisions.

Functioning as both a cutting-edge medical research facility and a community-oriented healthcare institution, the hospital's mission focuses on the three areas of medical care, research, and education. In fulfilling its mission, the hospital provides high-quality patient-oriented medical care (including a state-of-the-art Cancer Center), develops innovative new medical treatments in cooperation with other research facilities (such as the university's Center for iPS Cell Research and Application [CiRA]), and fosters conscientious and compassionate healthcare professionals.

[www.kuhp.kyoto-u.ac.jp/english](http://www.kuhp.kyoto-u.ac.jp/english)

## The Kyoto University Museum

The Kyoto University Museum is a center for research based on specimens accumulated by the university's scholars throughout the course of its long history. To this day, it continues to advance groundbreaking new research utilizing its expanding collection, which currently comprises 2.6 million items that are relevant to a wide spectrum of fields—from cultural sciences, to natural history, to engineering. The museum is open to students and the public, exhibiting highlights from its collection and showcasing the university's research activities.

The museum also serves as a bridge connecting the university with the community—through exhibitions, lectures, and other events. It is also the coordinating institution of a worldwide network of university museums, and has organized several international symposia focusing on the new research field of museum science.

[www.museum.kyoto-u.ac.jp/index\\_e.htm](http://www.museum.kyoto-u.ac.jp/index_e.htm)



# General Information: Support Services

## Support Services for International Researchers and Students



### Information and Advising Services

Information and advising services are available for international researchers and students who have concerns about their studies or about daily life in Japan.

#### International Student Advising Room

(For advice on academic studies and life in Japan)

[www.kyoto-u.ac.jp/en/education-campus/facilities/international-student-advising.html](http://www.kyoto-u.ac.jp/en/education-campus/facilities/international-student-advising.html)

#### Kyoto University International Service Office

(For information about visas, accommodation, and daily life)

[kuiso.oc.kyoto-u.ac.jp/en/](http://kuiso.oc.kyoto-u.ac.jp/en/)



### Cultural Exchange and Language Learning Opportunities

Kyoto University frequently holds events to promote intercultural exchange in which students can participate, and various forms of support are provided for students and researchers seeking to improve their Japanese language skills.

#### Student Lounge KI-ZU-NA

[www.kyoto-u.ac.jp/en/education-campus/facilities/student-lounge-kizuna](http://www.kyoto-u.ac.jp/en/education-campus/facilities/student-lounge-kizuna)

#### Education Center for Japanese Language and Culture

[www.z.k.kyoto-u.ac.jp/introduction/education-center-for-japanese](http://www.z.k.kyoto-u.ac.jp/introduction/education-center-for-japanese)



### Health Care Office, Occupational Welfare Division

Kyoto University's Health Care Office provides health checkups, first aid, and health counseling, and issues health certificates for students, faculty, and staff. In addition to the Health Care Office on Yoshida Campus, there are branch offices on Katsura and Uji Campus.

[www.hoken.kyoto-u.ac.jp/en](http://www.hoken.kyoto-u.ac.jp/en)

### Kyoto University's Response to the Novel Coronavirus (COVID-19)

At the time of this booklet's publication, university activities have been affected by the novel coronavirus (COVID-19) pandemic. Please see the following webpage for updated information on the pandemic and Kyoto University's response measures:

[www.kyoto-u.ac.jp/en/about/safety/coronavirus.html](http://www.kyoto-u.ac.jp/en/about/safety/coronavirus.html)





## Accommodation

Kyoto University provides accommodation for international researchers and students at

several locations close to its campuses, including two new dormitories near Yoshida Campus that opened in October 2019. The two new dormitories increase the number of rooms provided exclusively for international researchers and students by approximately 130, bringing the total number of rooms to approximately 550.

[kuiso.oc.kyoto-u.ac.jp/en/housing/facilities/](http://kuiso.oc.kyoto-u.ac.jp/en/housing/facilities/)



## Research Promotion and Coordination

To promote excellence in research, the Kyoto University Research Administration Office (KURA) provides faculty members with comprehensive support. Staffed by a team of knowledgeable experts in research development, KURA connects researchers in different fields to advance the development of interdisciplinary research and new research fields.

**Kyoto University Research Administration Office (KURA)**

[www.kura.kyoto-u.ac.jp/en/](http://www.kura.kyoto-u.ac.jp/en/)



## Support for Childcare and Work-Life Balance

The Gender Equality Promotion Center provides various support services, including:

- Childcare support
- Care for sick children
- Support to maintain a healthy work-life balance

(Please contact the center in advance to check eligibility and other requirements)

**Gender Equality Promotion Center**

[www.cwr.kyoto-u.ac.jp/eng/](http://www.cwr.kyoto-u.ac.jp/eng/)



# Campuses and Facilities

## Campuses



### Yoshida (Main Campus)

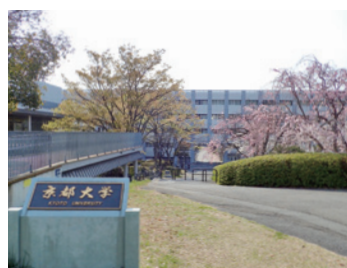
Located near the center of Kyoto City, Yoshida Campus is close to many scenic and natural spots, such as the famous Philosopher's Walk and the Kyoto Imperial Palace. As the university's main campus, it has long been a familiar landmark for Kyoto citizens, and well-known as a vibrant, bustling hub of student life. Buildings on the campus present a variety of architectural styles—from traditional Japanese wood and brick buildings dating back to the time of the university's establishment, to modern laboratory buildings that house cutting-edge facilities.



### Katsura

Katsura Campus comprises three clusters of buildings overlooking Kyoto from the hills to the west of the city. It was conceived

as a "Techno-Science Hill" for graduate studies in engineering, where technology and science come together to provide an innovative new style of education and research environment.

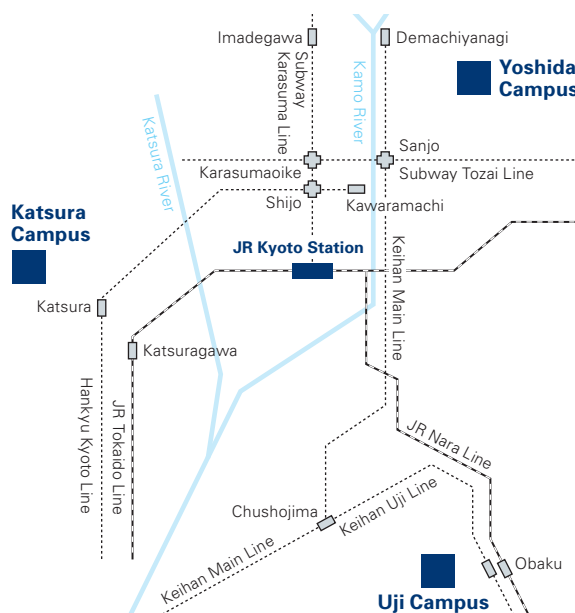
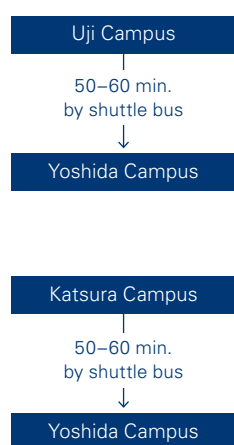


### Uji

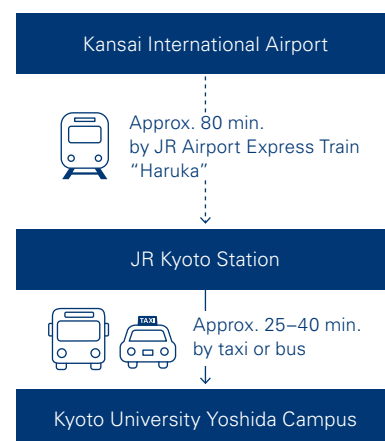
Located to the south of Kyoto City, Uji Campus is close to two UNESCO World Heritage Sites: Byōdōin Temple and Ujigami Shrine. It is

home to a number of leading research institutes and centers, including several large-scale facilities devoted to laboratory work in the natural sciences and energy-related fields.

## Location of the Campuses in Kyoto



## Access from Kansai International Airport



### Shuttle Bus Service

[www.kyoto-u.ac.jp/sites/default/files/inline-files/2104-timetable-12b555c33880ef53b74abb6324a77515.pdf](http://www.kyoto-u.ac.jp/sites/default/files/inline-files/2104-timetable-12b555c33880ef53b74abb6324a77515.pdf)

[www.kyoto-u.ac.jp/en/access](http://www.kyoto-u.ac.jp/en/access)



# Facilities throughout Japan

Since its establishment, Kyoto University has been renowned for its diverse fieldwork achievements. To facilitate those efforts, the university maintains a number of facilities at locations throughout Japan that serve as valuable resources for the activities of researchers.



Hokkaido Forest Research Station  
Shiranuka Branch, Hokkaido



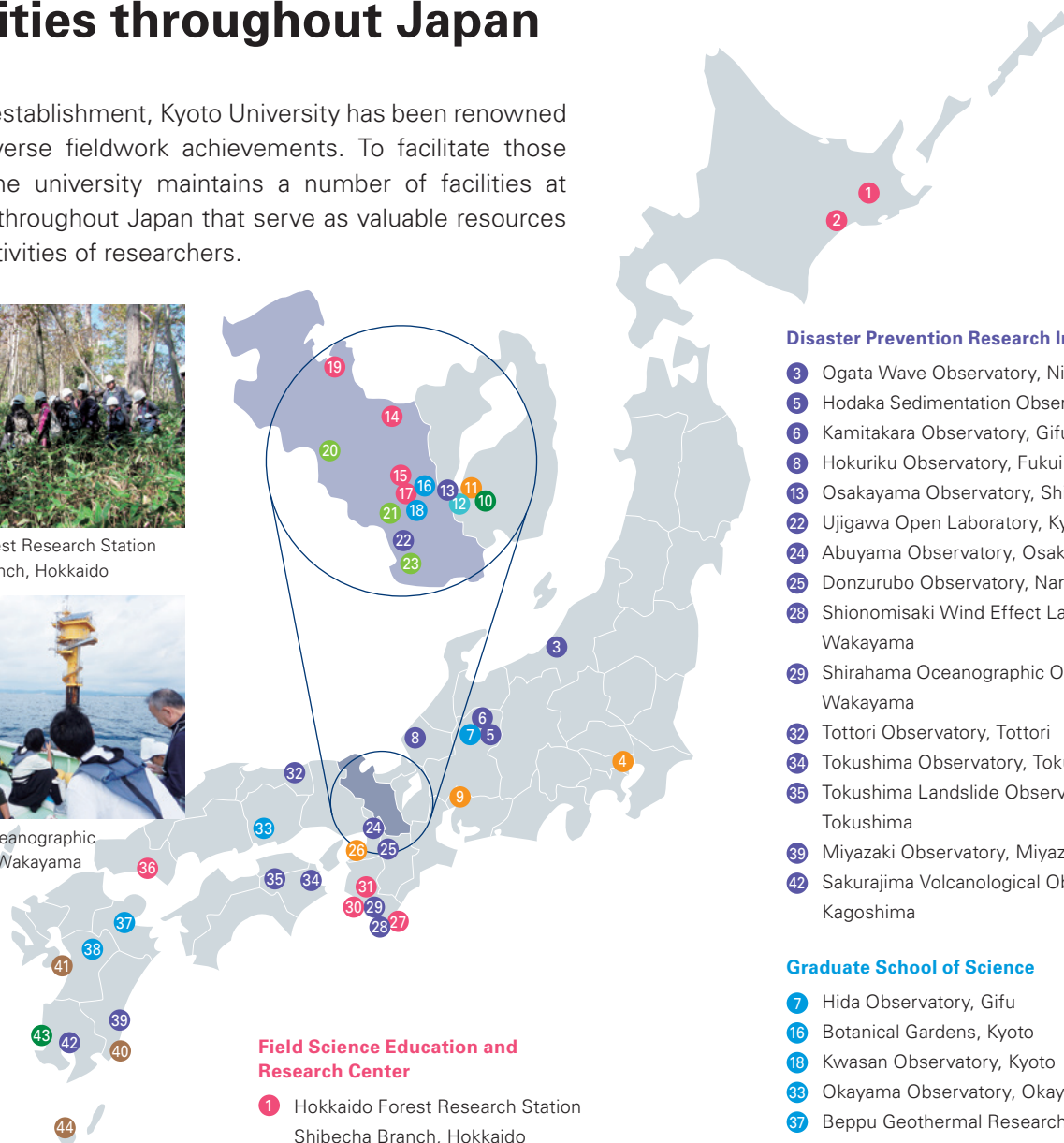
Shirahama Oceanographic  
Observatory, Wakayama



Okayama Observatory, Okayama



Sakurajima Volcanological  
Observatory, Kagoshima



## Disaster Prevention Research Institute

- 3 Ogata Wave Observatory, Niigata
- 5 Hodaka Sedimentation Observatory, Gifu
- 6 Kamitaka Observatory, Gifu
- 8 Hokuriku Observatory, Fukui
- 13 Osakayama Observatory, Shiga
- 22 Ujigawa Open Laboratory, Kyoto
- 24 Abuyama Observatory, Osaka
- 25 Donzurubo Observatory, Nara
- 28 Shionomizaki Wind Effect Laboratory, Wakayama
- 29 Shirahama Oceanographic Observatory, Wakayama
- 32 Tottori Observatory, Tottori
- 34 Tokushima Observatory, Tokushima
- 35 Tokushima Landslide Observatory, Tokushima
- 39 Miyazaki Observatory, Miyazaki
- 42 Sakurajima Volcanological Observatory, Kagoshima

## Graduate School of Science

- 7 Hida Observatory, Gifu
- 16 Botanical Gardens, Kyoto
- 18 Kwasan Observatory, Kyoto
- 33 Okayama Observatory, Okayama
- 37 Beppu Geothermal Research Laboratory, Oita
- 38 Aso Volcanological Laboratory, Kumamoto

## Research Institute for Sustainable Humanosphere

- 10 Shigaraki MU Observatory, Shiga
- 43 Living-sphere Simulation Field, Kagoshima

## Wildlife Research Center

- 40 Koshima Field Station, Miyazaki
- 41 Kumamoto Sanctuary, Kumamoto
- 44 Yakushima Field Station, Kagoshima

## Others

- 4 Tokyo Office, Tokyo
- 9 Center for the Evolutionary Origins of Human Behavior, Aichi
- 11 Center for Ecological Research, Shiga
- 26 Institute for Integrated Radiation and Nuclear Science, Osaka

## Field Science Education and Research Center

- 1 Hokkaido Forest Research Station Shibecha Branch, Hokkaido
- 2 Hokkaido Forest Research Station Shiranuka Branch, Hokkaido
- 14 Ashiu Forest Research Station, Kyoto
- 15 Kamigamo Experimental Station, Kyoto
- 17 Kitashirakawa Experimental Station, Kyoto
- 19 Maizuru Fisheries Research Station, Kyoto
- 27 Kii-Oshima Research Station, Wakayama
- 30 Seto Marine Biological Laboratory, Wakayama
- 31 Wakayama Forest Research Station, Wakayama
- 36 Tokuyama Experimental Station, Yamaguchi

## Graduate School of Agriculture

- 20 Livestock Farm, Kyoto
- 21 Laboratory of Crop Evolution, Kyoto
- 23 Experimental Farm, Kyoto

## Graduate School of Engineering

- 12 Research Center for Environmental Quality Management, Shiga