

Global Engagement

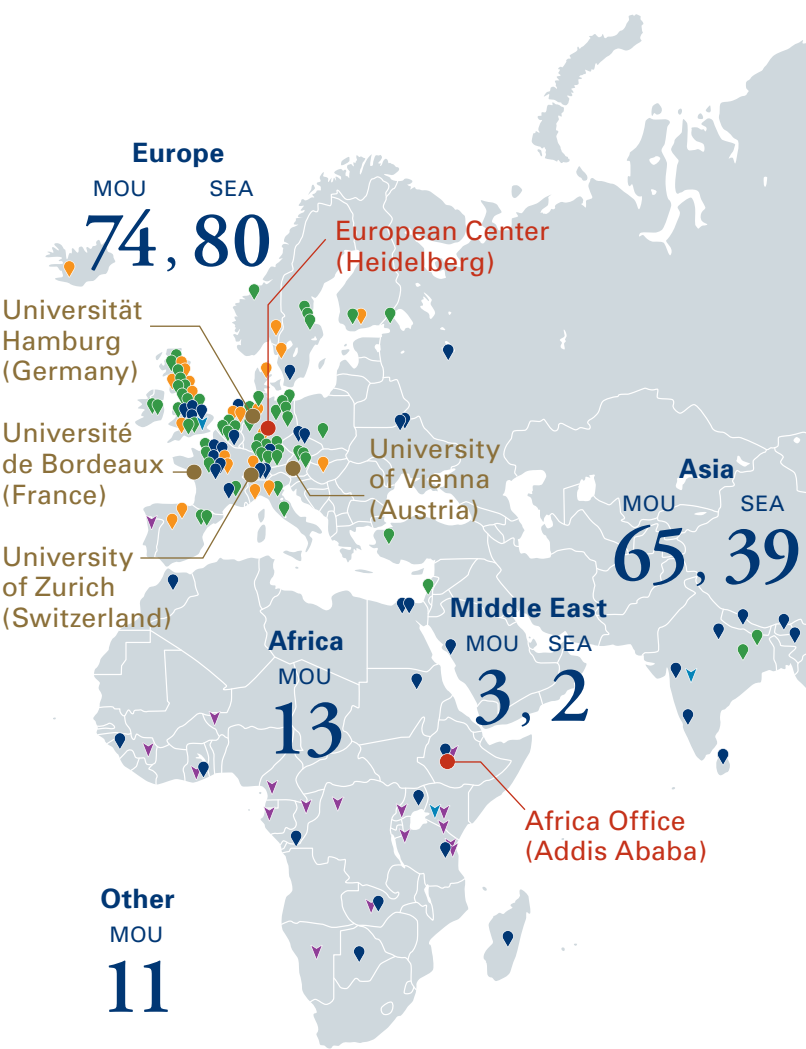
International Partners/Overseas Offices and Facilities

Kyoto University connects with the global community in diverse ways: through academic cooperation and partnerships, its overseas facilities, multilateral networks, and its alumni associations in various countries. International partners are an essential asset to the university, contributing to the development of its research and education endeavors and enriching its activities with multicultural diversity.

Research fieldwork sites at locations around the world are also a part of the university’s international network, providing a foundation for local engagement and cooperation.

The university’s overseas offices serve as its bridges to key regions around the world, implementing international outreach initiatives that capitalize on the unique qualities of those regions and providing support for researchers stationed overseas. Currently, the university has overseas centers in Heidelberg (Germany), Bangkok (Thailand), and Washington, DC (USA).

Kyoto University is itself an international hub where researchers from around the world gather to share and disseminate knowledge, promote research and technology transfer, and above all, connect with people who share their passions.



www.oc.kyoto-u.ac.jp/agreement/en/

See pp. 11–12 of this brochure and Facts and Figures pp. 7–10, 12–15

**Overseas Offices
and Facilities**

66

**On-site
Laboratories**

11

**Overseas Alumni
Associations**

31

**Strategic
Partnerships**

5

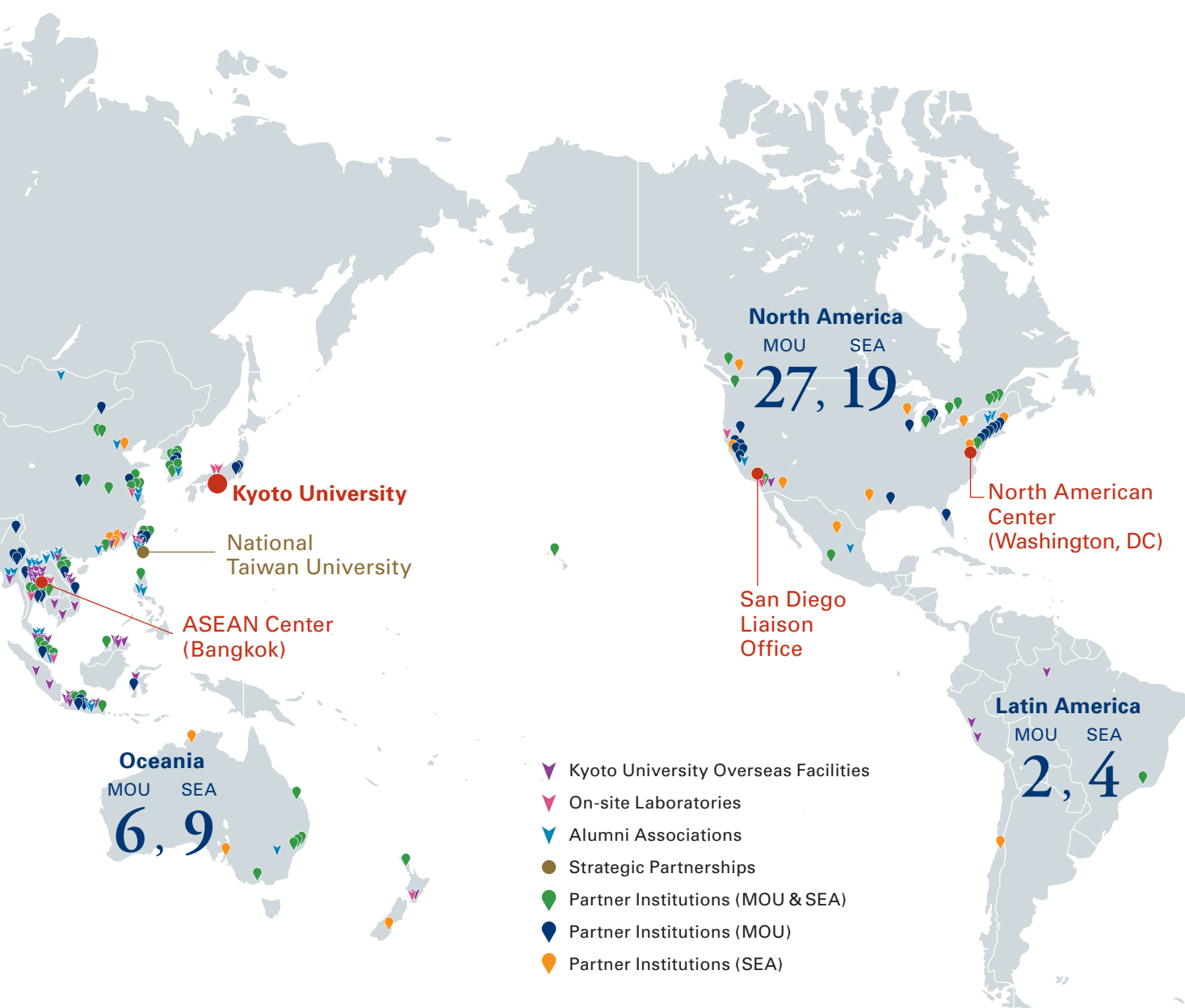
**University-level
Memoranda (MOU)**

201

**Student Exchange
Agreements (SEA)**

153

(As of April 1, 2022)



Alumni Associations

Kyoto University maintains an expanding network of former students, researchers, and academic staff through its alumni associations. Currently, there are 130 alumni associations in Japan and overseas.

The university promotes networking opportunities among its alumni around the world, and each regional association also plays a key role—bringing together people with shared personal experiences and a shared affection for their alma mater.

www.kyoto-u.ac.jp/en/alumni

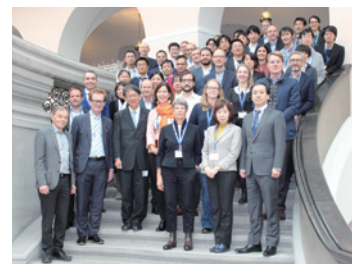


Global Engagement

Strategic Partnerships (SPs)

What? What are “Strategic Partners?”

“Strategic Partners” are institutions with which Kyoto University seeks to build on existing collaboration efforts to further develop interdisciplinary research collaboration, collaboration in new fields, and personnel mobility. The partnerships are initiated through executive-level relations between Kyoto University and world-leading institutions with which cooperation and exchange agreements have already been concluded.



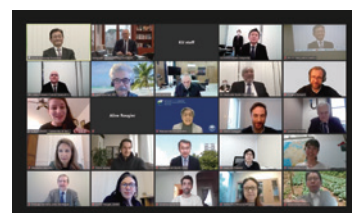
Joint Workshop in Medicine with the University of Zurich (Nov. 2019)

Why? Purposes and Expected Outcomes

1. Further development of sustained research collaboration, with a focus on interdisciplinary research and research in new fields.
2. Increased opportunities to acquire external funding for international research collaboration.
3. Development of bilateral collaboration into multilateral collaboration.
4. Facilitation of comprehensive cooperative activities with the partners, including educational collaboration and student and personnel mobility.
5. Enhancement of international competitiveness.



Conclusion of the SP MOU with National Taiwan University (Aug. 2020)



4th International Symposium with Université de Bordeaux: “Establishing Trilateral Collaboration between France, Japan, and Africa” (Feb. 2021)

How? Strategic Partnership Activities to Date

Activities Before Strategic Partnership Since 2000: Kyoto University Int'l Symposium					Strategic Partnership	2019	2020	2021	2022
Université de Bordeaux	2014	2015	2017		2019	Conclusion of SP MOU	4 th Symposium		
	1 st Symposium & MOU	2 nd Symposium & SEA	3 rd Symposium						
Universität Wien	1993	1997	1998–2017	2018	2019	Conclusion of SP MOU / 2 nd Joint Workshop			Joint research funding
	MOU	SEA	Researcher Exchange Program	Workshop					
University of Zurich	2013	2014	2016	2019	2020		Conclusion of SP MOU	Joint research funding	Research funding by KU
	1 st Symposium & MOU	SEA	2 nd Symposium	Workshop					
Universität Hamburg	2016	2017	2018		2020		Conclusion of SP MOU	Joint research funding	Joint research funding
	Workshop	1 st Symposium & MOU+SEA	2 nd Symposium						
National Taiwan University	2005	2013	2014	2014	2020	Conclusion of SP MOU	SP Matching Event		Joint research funding
	MOU+SEA	1 st Symposium	Faculty Exchange Program	2 nd Symposium					

On-site Laboratory Initiative

“On-site laboratories” are locally managed laboratories established collaboratively by Kyoto University faculties/departments and overseas partners. The initiative aims to promote world-leading advanced research, increase its recruitment of talented international students, and expand its collaboration with industrial partners. Through these efforts Kyoto University seeks to strengthen the institutional infrastructure that enables it to be a key player in international academia and ranked among the world’s leading universities. Eleven on-site laboratories have been established to date. The laboratories’ promotion of new international research collaboration and collaboration with industry has a positive ripple effect on the university’s education efforts, including the launch of new double degree programs with partner universities.

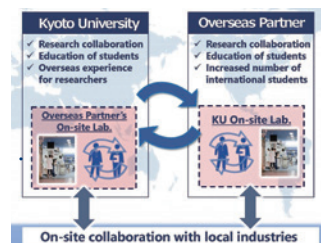
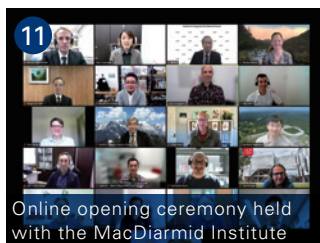
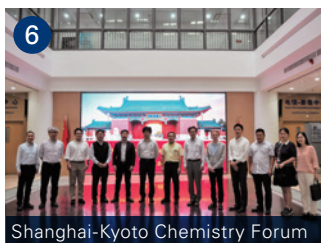
www.kyoto-u.ac.jp/en/about/operation/designated/on-site-laboratories



On-site Laboratories

- 1 Kyoto University Research Center San Diego, USA
- 2 IFOM-KU Joint Research Laboratory, Japan/Italy
- 3 Kyoto University-Tsinghua University Cooperative Research and Education Center for Environmental Technology, China
- 4 Kyoto University On-site Laboratory at Mahidol University for Educational and Research Collaboration in Environmental Studies, Thailand
- 5 Smart Materials Research Center, Thailand
- 6 Kyoto University Shanghai Lab, China
- 7 iPS Cell Research Center at Gladstone Institutes, USA
- 8 Center for Integrated Biosystems, Taiwan
- 9 Quantum Nano Medicine Research Center, Japan/USA
- 10 Laboratory for Green Porous Materials, Singapore
- 11 Center for Integrated Data-Material Sciences (iDM), New Zealand

See Facts and Figures pp. 12–13



Global Engagement

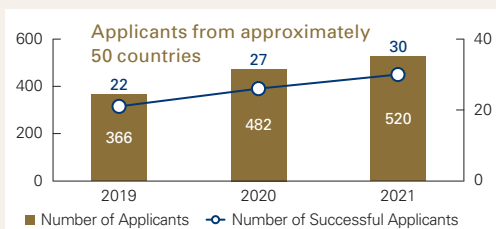
Kyoto University International Undergraduate Program (Kyoto iUP)

The Kyoto University International Undergraduate Program (Kyoto iUP) has been designed to minimize the language and financial hurdles that often prevent talented international students from pursuing study, and ultimately careers, in Japan. It is a 4.5-year international scholarship program comprising a six-month preparatory course followed by four years of undergraduate study. A key feature of the program is that no Japanese language proficiency is required at the outset, as the program provides an intensive Japanese language component. Admission and tuition fees are exempted, and students receive a monthly scholarship of up to JPY 120,000 for the 4.5 years of the program.



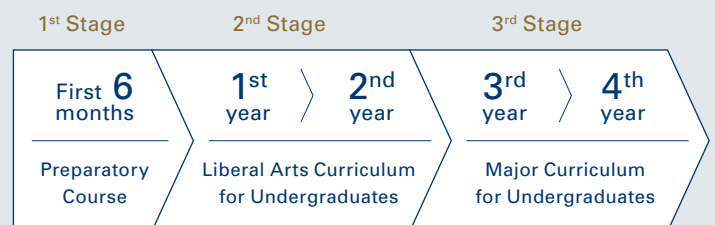
In the first two years of the main program (following the six-month preparatory course), students take liberal arts courses and fundamental courses in their respective majors, which are taught in English and/or Japanese. The final two years of the program focus on specific subjects in the students' majors, which are taught mainly, or exclusively, in Japanese. The international iUP students attend the same classes as regular Japanese undergraduate students, which imbues the classes with a rich multicultural component. Upon graduation, students are awarded a bachelor's degree in their chosen major. Companies and organizations in the private sector provide various forms of support for the program, including support for student scholarships.

Number of Kyoto iUP Applicants



Currently approximately 25 students can enroll in the program each year.

Kyoto iUP Curriculum



Kyoto iUP students attend the same major curriculum classes as Japanese undergraduate students.

Student Voices



Yu Qing Chang

Affiliation: 1st year of bachelor course,
Faculty of Economics

Country of Origin: Singapore

To me, there are three main points that make Kyoto iUP an exceptionally attractive program. Firstly, it comes with a scholarship that pays full tuition fees, and it also provides a monthly stipend so that one can focus on one's studies without worry. Secondly, I believe that the Kyoto iUP program gives students a sense of community, as one has the other iUP students, seniors who have walked the same road, as well as an extremely helpful team of staff and professors. Lastly, the iUP program provides comprehensive language support, with a six-month preparatory course before you begin your undergraduate studies, and professors and mentors that will guide you in your language learning journey.



Irsyad Zahid Kamil Uno

Affiliation: 1st year of bachelor course,
Undergraduate School of Architecture,
Faculty of Engineering

Country of Origin: Indonesia

I chose to study in Japan because I wanted to know and learn about Japanese architecture. I am also interested in structural engineering—how Japan makes its buildings durable and safe from disasters, yet maintains its own unique touch. One benefit of the iUP program is that, because international and Japanese students study together, we have the opportunity to make contacts, share ideas, and broaden our horizons. We are also connected with other iUP students from different countries, and can become friends with them. The guidance iUP gives us also prevents us from drifting aimlessly, and instead pushes us to focus and find a purpose. In my opinion, those experiences are unobtainable elsewhere.

Double and Joint Degree Programs

Kyoto University offers double and joint degree programs in diverse fields that provide students with advanced value-added study opportunities that cannot be provided by a single university.



Graduate School of Letters

Transcending national and cultural borders to open the door to a transcultural research journey.

Joint master's degree: Heidelberg University

Double doctoral degree: École des Hautes Études en Sciences Sociales (EHESS)



Graduate School of Economics

Global markets, local creativity—cultivating world-class researchers in the field of economics and business.

Double doctoral degree: University of Glasgow

Joint master's degree: University of Glasgow, University of Barcelona



Graduate School of Science

Pursuing a new mathematical science field related to quantum information theory (QIT).

Double doctoral degree: École Normale Supérieure de Lyon



Graduate School of Medicine

Training data scientists who will lead the future healthcare, disease prevention, and therapy development through multi-dimensional analysis of the big data related to human life.

Joint doctoral degree: McGill University



Graduate School of Medicine School of Public Health

Providing students with advanced knowledge and skills to conduct global research in the field of public health.

Double master's degrees (professional): National Taiwan University, Chulalongkorn University, Mahidol University



Graduate School of Engineering

Addressing global and regional environmental issues in a multi-cultural and multi-linguistic environment.

Double master's degree: Tsinghua University



Graduate School of Agriculture

Agricultural sciences for the global future of life, food, and the environment.

Double master's degrees: IPB University (Bogor Agricultural University), Gadjah Mada University, Institut Teknologi Bandung, National Taiwan University, Kasetsart University, Mahidol University



Graduate School of Energy Science

Global challenges for secured energy, carbon neutrality, sustainability, and affordability.

Double master's degrees: University of Malaya, Chulalongkorn University, King Monkut's University of Technology Thonburi

Double doctoral degree: Zhejiang University, Université de Bordeaux



Graduate School of Global Environmental Studies

Establishing a new field of global environmental sustainability studies that combines the natural sciences, social sciences, and the humanities.

Double master's degrees: Mahidol University, IPB University (Bogor Agricultural University), Tsinghua University



Graduate School of Management

Adding a new dimension to business management studies to cultivate global business leaders.

Double professional degrees: National Taiwan University, Cornell University

Double master's degree: Universität Hamburg

Global Engagement

Student Mobility

Kyoto University provides a number of short-term student mobility programs (both incoming and outgoing). The following are some selected examples.

Short-Term Inbound Program



www.z.k.kyoto-u.ac.jp/summer-spring-program/

Kyoto Summer/Spring Program

The Kyoto Summer/Spring Program is an annual short-term program open to both students from international partner institutions and domestic Kyoto University students. The program is held jointly by the Kyoto University Institute for Liberal Arts and Sciences (ILAS) and the Kyoto University Asian Studies Unit (KUASU). Students can select classes taught mainly in English or mainly in Japanese, enabling them to experience Kyoto University's cutting-edge research activities while deepening their understanding of Japanese culture, language, and society. For the past two years, the program has been conducted online and enrollment numbers have increased. A new "living with COVID-19" format is about to be implemented, including the resumption of in-person classes.



The Amgen Scholars Program

The Amgen Scholars Program is a short summer program that provides scholarships for undergraduate students from around the world to engage in diverse cutting-edge science research at leading academic institutions, including Kyoto University. The program aims to foster the next generation of innovators by providing increased opportunities for students pursuing careers in science.

Short-Term Outbound Program

ILAS Seminar (Overseas)



The ILAS Seminar (Overseas) provides students with the opportunity to engage in hands-on training overseas under the close guidance of faculty members, and

to learn about the history, geography, and culture of the destination country or region.

Kingfisher Global Leadership Program



The Kingfisher Global Leadership Program is a US study abroad program for graduate and undergraduate students pursuing international careers.

The program provides students with opportunities to participate in lectures and discussions, and to visit international organizations (such as the World Bank, NASA, and the National Institutes of Health), as well as local companies in Washington, DC.