

## Explanation of Markers

- Information Center
- Bus stop
- Important Cultural Property
- Registered Tangible Cultural Property
- Toilet
- Available to the Public
- Shop
- Can be viewed by the public
- Points of interest
- Restaurant
- Bust or monument

## Scenery highlights

- Cherry blossoms
- Hydrangeas
- Rhododendrons
- autumn leaves
- Fragrant olives

## Viewing the map

The map has been segmented into coordinates, so it is possible to locate the actual positions.

- (1) This looks interesting!  
Café-Restaurant Camphora **MAP 2-E**
- (2) Check the map icon!
- (3) Use the coordinates to check the position and start walking!

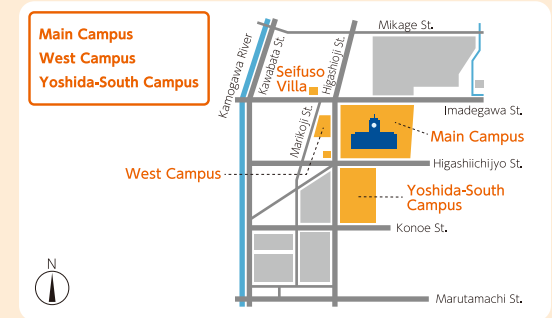
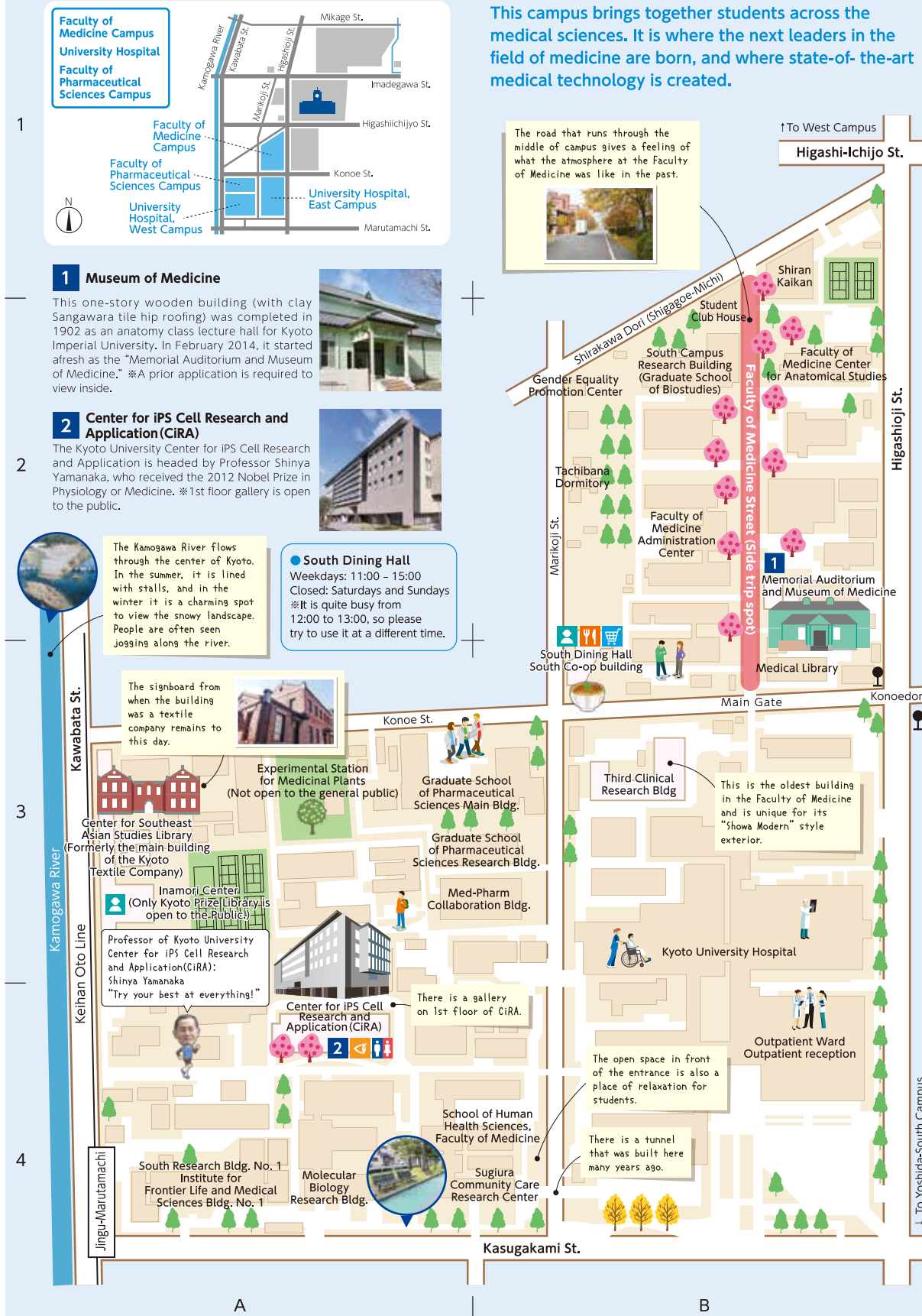


Details also available online  
[http://www.kyoto-u.ac.jp/ja/access/downloademap/pictorial\\_map.html](http://www.kyoto-u.ac.jp/ja/access/downloademap/pictorial_map.html)

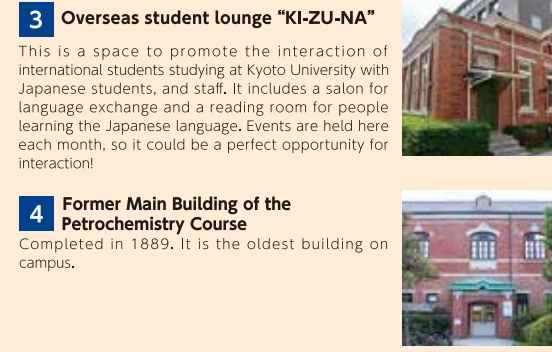
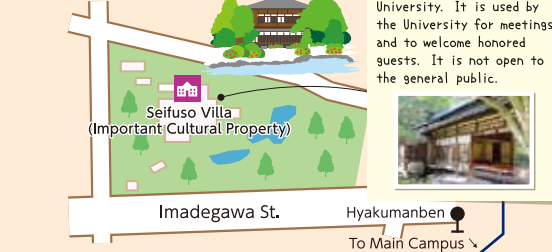


KYOTO UNIVERSITY

Edited and issued by Public Relations Division,  
General Affairs Department, Kyoto University  
Yoshida-honmachi, Sakyo-ku, Kyoto 606-8501, Tel: 075-753-2071  
\*Details such as hours of opening shown  
on this map are correct as of March 2018. Issued March 2018



The main campus of Kyoto University-containing the Clock Tower and the Camphor tree. It is filled with various departments from the humanities to engineering. This is the first place to come to find out about Kyoto University.



- Central Cafeteria  
Weekdays: 8:00-21:00  
Closed: Saturdays, Sundays, and public holidays
- Café-Restaurant Camphora  
Weekdays: 11:00-21:30  
Saturdays, Sundays, and public holidays: 11:00-15:00
- Restaurant La Tour  
Lunch: 11:00-15:00 (Last orders 14:30)  
Dinner: 17:00-22:00 (Last orders 21:00)
- Yoshida Shop  
Weekdays: 10:00-19:00  
Closed: Saturdays, Sundays, and public holidays
- Cafeteria Renais  
Weekdays: 11:00-22:00  
Saturdays: 11:00-19:30  
Sundays: 11:00-14:00 (Closed on public holidays)
- Yoshida Cafeteria  
Weekdays: 11:00-14:00  
Closed: Saturdays, Sundays, and public holidays
- Rakuyu Kaikan  
Weekdays Tuesday-Saturday: 9:00-21:00  
Closed: Sundays and Mondays and others-please inquire
- Clock Tower Co-op Shop  
Weekdays: 11:00-20:00  
Saturdays: 11:00-15:00

