

FOSTERING THE NEXT GENERATION

白眉 — The Hakubi Project

A Unique Opportunity for Outstanding Young Talent

The Hakubi Project was established by Kyoto University in 2009 to foster outstanding young researchers. The program recruits twenty international researchers per year as associate and assistant professors. It gives them a valuable opportunity to devote themselves entirely to their research. The project is open to any researcher in any academic field. **WEB** www.hakubi.kyoto-u.ac.jp/eng

PHIL An Inquiry into the Nature of Mind

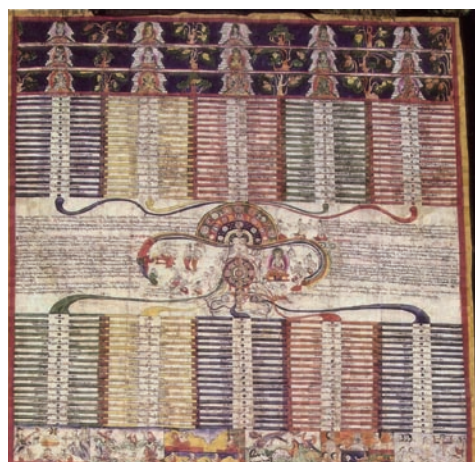
Research on Buddhist Sources from the Himalayas.

Socrates' famous injunction "Know Thyself" has interesting parallels in Buddhism which often defines supreme wisdom as "to know one's own mind as it truly is" (Sino-Japanese: 如實知自心, *nyojitsu chi ji-shin*). The purpose of this project is to investigate this fundamental question of the nature of mind, or self-knowledge, according to the highest philosophical view known as the Great Perfection (Tibetan: *rdzogs chen*) in the Buddhist Himalayas (North India, Nepal, Bhutan, and Tibet). On the basis of in-depth research on primary texts and fieldwork, this project also includes interdisciplinary dialogue with cognitive sciences through workshops and international colloquia.



Marc-Henri Deroche, PhD

Assistant Professor, The Hakubi Center for Advanced Research / Graduate School of Letters / also associated to the Centre National de la Recherche Scientifique, Paris (UMR 8155)
www.hakubi.kyoto-u.ac.jp/eng/02_mem/h25/deroche.html



Tibetan painting describing levels of consciousness, 18th c., Karmay collection

LIT Is Love Blind?

Early Modern South Asian Authors Argue Otherwise.

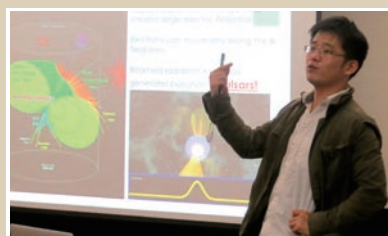
Have you ever fallen in love? Do you remember your first date? Love makes you absorbed with thoughts of your lover. Love burns and consumes your entire being. Therefore, many South Asian religious traditions such as Buddhism, Jainism, and Hinduism consider love, or emotional attachment to be more



The Hakubi Seminar

Hakubi seminars are held at the Hakubi Center twice a month (on the first and third Tuesdays at 16:00), organized on a rotational basis by the Hakubi researchers themselves. These regular gatherings are attended by all Hakubi researchers. In April 2011, English became the official language for presentations and discussions.

WEB www.pri.kyoto-u.ac.jp/archives/index.html



Takayuki Saito, PhD



God Krishna (Left) and his lover Radha (Right)

precise, as something fundamentally detrimental to the pursuit of enlightenment. However, South Asian thinkers in the school of Bhakti (devotion) argued that passionate and emotional attachment can become a powerful tool for enlightenment if it is targeted toward God. My research focuses on the development of this Bhakti school in the context of South Asian intellectual history, especially during its early modern period.

From the Editor Okita published "Hindu Theology in Early Modern South Asia: The Rise of Devotionalism and the Politics of Genealogy" from Oxford University Press on 31 July 2014.

Kiyokazu Okita, PhD

*Assistant Professor, The Hakubi Center
for Advanced Research, Kyoto University /
Research Fellow, the Oxford Center for Hindu Studies, University of Oxford*
www.hakubi.kyoto-u.ac.jp/eng/02_mem/h25/okita.html



Exploring human-nature relationships

The effects of resource development on local livelihoods in Tropical Asia.

My research examines how to resolve the contradiction between natural resource development and the achievement of stable local livelihoods in Tropical Asia. Recently, large-scale oil palm plantations in Tropical Asia have been spreading widely across borders. Palm oil produced from these plantations is exported to Japan, where it is widely used in daily life. However, in these circumstances, local people's way of life and society tend to be ignored. In this project, I examine how people can maintain a stable livelihood in areas where plantation development is in progress by comparing situations in several regions of Southeast Asia. In addition, I clarify the possibilities for coexistence between natural resource development and the integrity of people's livelihoods that rely on these resources.



Yumi Kato, PhD

Assistant Professor, The Hakubi Center for Advanced Research
www.hakubi.kyoto-u.ac.jp/eng/02_mem/h25/kato.html



What's in a Name?

The term hakubi (白眉), literally means 'white eyebrows' in Japanese (白 : white, 眉 : eyebrows). The word originates from a Three Kingdoms era (220-280 AD) Chinese legend: "Three kingdoms saga (三国志)". According to the legend, one of the kingdoms, called Shu (蜀), was home to five brothers with extraordinary talents. The fourth brother, 馬良季常 (Baryo Kijo), who was particularly outstanding, had white hairs in his eyebrows, and so the term hakubi has come to refer to particularly talented individuals.

