

## Kyoto University Research Administration Office (KURA)

As part of a new national government initiative, the Kyoto University Research Administration Office (KURA) was officially launched in April 2012 as an organization to provide consistent research support for project planning, obtaining research funds, project execution and public relations. KURA is intended to ease the non-research related burden (such as administrative work) imposed on researchers by providing a well-organized research support network. To achieve that aim, KURA networks and collaborates with existing research support offices at Kyoto University.

[www.kura.kyoto-u.ac.jp/en/](http://www.kura.kyoto-u.ac.jp/en/)

### Vision

To contribute to the generation of world-class knowledge by collaborating with researchers in accordance with Kyoto University's mission, and to be a pioneering model for university research administration in Japan.

### Mission

#### ■ Facilitating research activities

To support the development of an infrastructure for research promotion utilizing diverse research resources at Kyoto University.

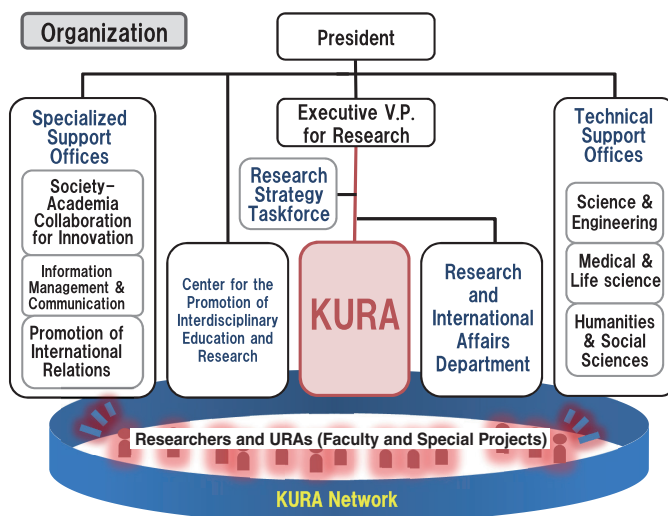
To create a support system to obtain external research funds.

#### ■ Disseminating research achievements to society

To form a hub for mutual communication between researchers and society.

#### ■ Creating an infrastructure for effective to support

To create a research administration network which resonates with the diverse members and fields of knowledge at Kyoto University.



KURA collaborates with the faculties, institutes and research centers of Kyoto University, as well as with external national and international research organizations, including those in the private sector. Through these activities, KURA aims to form a robust prototype for an effective university research administration system—a concept which is not currently well recognized in Japan, and to develop training programs for university research administrators.

As of April 1, 2012, the KURA staff consists of three senior research administrators, five research administrators and three administrators. The office is located on the Yoshida Campus.

Photo: The KURA staff with President Hiroshi Matsumoto [4<sup>th</sup> from left] and Executive V.P. Kiyoshi Yoshikawa[3<sup>rd</sup> from left]

