

KYOTO UNIVERSITY

FACTS AND FIGURES

2013



CONTENTS

Chronological Table	1
Organization Chart	4
Staff and Students	5
Finance	6
University Facilities	9
Industry-Academia Collaboration	10
Academic Exchange Memoranda	11
Researchers from Abroad	14
Researchers going Abroad	15
Students from Abroad	16
Exchange of Researchers and Students	18
Kyoto University International Symposia	19
List of Overseas Offices and Facilities	20

CHRONOLOGICAL TABLE

Year	Contents
1897	Founded as Kyoto Imperial University. College of Science and Engineering established.
1899	Colleges of Law and Medicine established. University Library and University Hospital established.
1906	College of Letters established.
1914	College of Science and Engineering divided into College of Science and College of Engineering.
1919	Colleges reorganized into five faculties under the new University Ordinance. The Faculty of Economics was established.
1923	Faculty of Agriculture established.
1926	Institute for Chemical Research established.
1939	Institute for Research in Humanities established.
1941	Chest Disease Research Institute and Institute of Atomic Energy established.
1944	Wood Research Institute established.
1946	Research Institute for Food Science established.
1947	Renamed Kyoto University
1949	Reorganized on four-year schooling basis (with the exception of six years for medicine) under the new education system. Faculty of Education established. Branch School established for general education of freshmen and sophomores.
1951	Disaster Prevention Research Institute established.
1953	Graduate courses under the new system were opened. Yukawa Institute for Theoretical Physics established.
1954	Branch School renamed College of Liberal Arts and Sciences.
1956	Institute for Virus Research established.
1960	Faculty of Pharmaceutical Sciences established.
1962	Institute of Economic Research established.
1963	Research Institute for Mathematical Sciences and Research Reactor Institute established.
1965	Center for Southeast Asian Studies established.
1966	Center for Student Health established.
1967	Primate Research Institute established.
1969	Data Processing Center established.
1971	Radioisotope Research Center established.



Year	Contents
1972	Research Center for Sports Science established.
1975	College of Medical Technology established.
1976	Plasma Physics Laboratory and Radiation Biology Center established.
1977	Environment Preservation Center and Center for Archaeological Operations established.
1978	Educational Center for Information Processing established.
1980	Research Center for Biomedical Engineering established.
1981	Radio Atmospheric Science Center established.
1986	Center for African Area Studies established.
1988	Center for Molecular Biology and Genetics established.
1990	Center for Student Exchange established.
1991	Graduate School of Human and Environmental Studies and Center for Ecological Research established.
1992	College of Liberal Arts and Sciences reorganized and renamed Faculty of Integrated Human Studies.
1994	Research Center for Higher Education established.
1995	Venture Business Laboratory established.
1996	Graduate School of Energy Science established. Institute of Atomic Energy and Plasma Physics Laboratory merged into the Institute of Advance Energy. Student Counseling Center was established.
1997	Kyoto University Museum was established. The Educational Center for Information Processing reorganized and renamed Center for Information and Multimedia Studies.
1998	Graduate School of Asian and African Area Studies and Graduate School of Informatics established. Chest Disease Research Institute reorganized and renamed Institute for Frontier Medical Sciences. Research Center for Biomedical Engineering closed.
1999	Graduate School of Biostudies and Counseling Center established. Student Counseling Center was closed.
2000	Radio Atmospheric Science Center reorganized and renamed Radio Science Center for Space and Atmosphere. University Archives were established.
2001	International Innovation Center was established. Research Institute for Food Science closed. Center for Data Collection and Analysis established.
2002	Graduate School of Global Environmental Studies established. Center for Data Processing and Center for Information and Multimedia Studies reorganized and renamed Academic Center for Computing and Multimedia Studies. Research Center for Low Temperature and Materials Sciences and Fukui Institute for Fundamental Chemistry established.

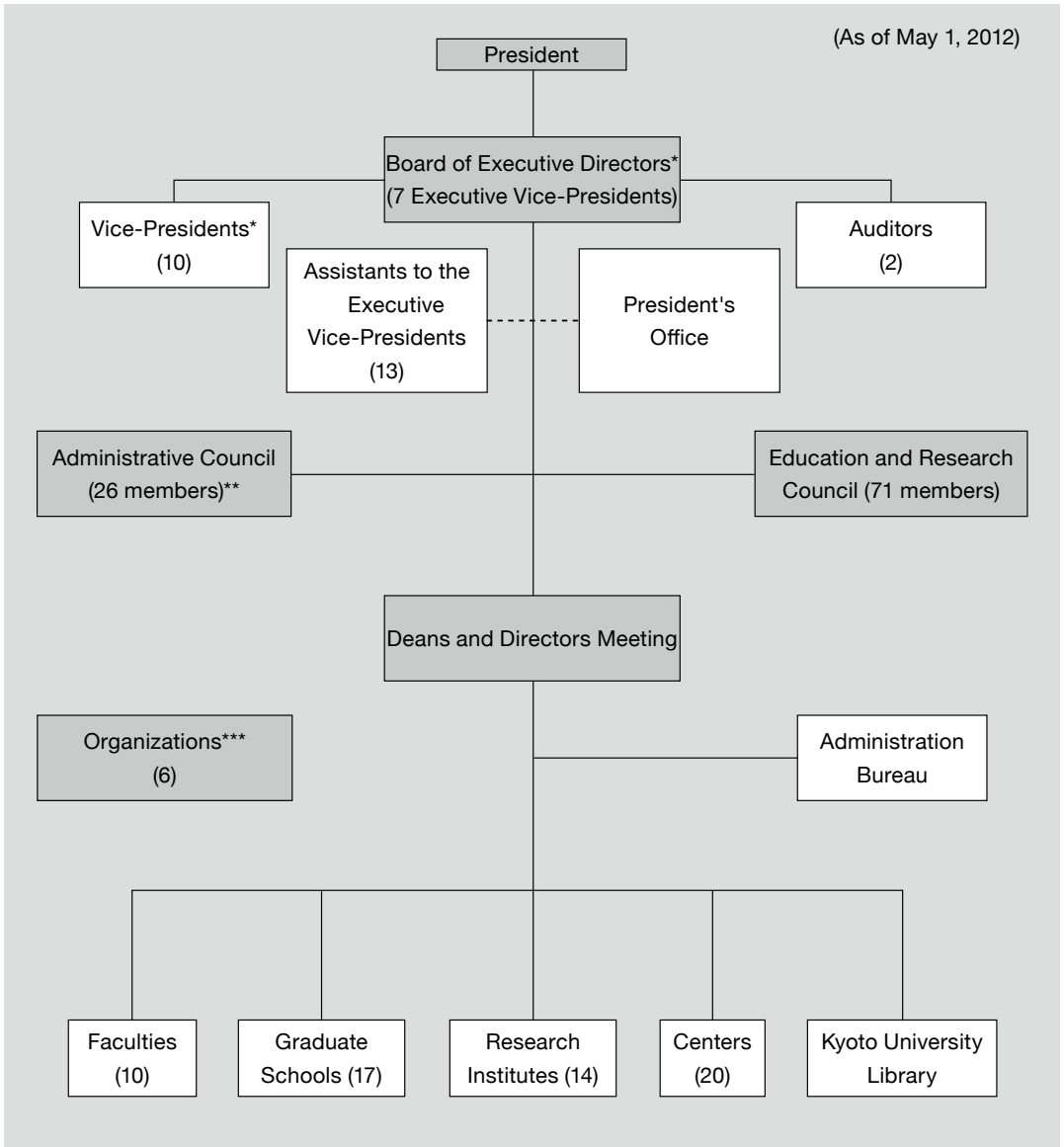


Year	Contents
2003	Research Center for Sports Science closed. Seto Marine Biological Laboratory, University Forest, Subtropical Plant Institute and Fisheries Research Station merged into the Field Science Education and Research Center. Research Center for Higher Education reorganized and renamed Center for the Promotion of Excellence in Higher Education. Institute for the Promotion of Excellence in Higher Education and Law School established. The College of Medical Technology merged into Graduate School of Medicine.
2004	Kyoto University incorporated in accordance with the National University Corporation Law.
	Wood Research Institute and Radio Science Center for Space and Atmosphere unified as Research Institute for Sustainable Humanosphere. Center for Southeast Asian Studies given Institute status. Center for Molecular Biology and Genetics and Center for Data Collection and Analysis closed.
2005	Organization for the Promotion of International Relations, Environment, Safety, and Health Organization, International Innovation Organization, Institute for Information Management and Communication, and Library Network established. Center for Student Exchange reorganized and renamed International Center.
2006	School of Government established. Graduate School of Management established. Center for Integrated Area Studies established. Nano Medicine Merger Education Unit established. Institute of Sustainability Science established. Kyoto University Pioneering Research Unit for Next Generation established. Center for Women Researchers established.
2007	Kokoro Research Center established. Advanced Medical Engineering Research Unit established. Career-Path Promotion Unit for Young Life Scientists established. College of Medical Technology closed. International Innovation Organization reorganized and renamed Kyoto University Office of Society-Academia Collaboration for Innovation. International Innovation Center reorganized and renamed Innovative Collaboration Center. Institute for Integrated Cell-Material Sciences established.
2008	Wildlife Research Center established. Center for Archaeological Operations reorganized and renamed Center for Cultural Heritage Studies. Unit of Synergetic Studies for Space established. Education Unit for Global Leaders in Advanced Engineering and Pharmaceutical Sciences established.
2009	Young Researcher Development Center established.
2010	Center for the Promotion of Interdisciplinary Education and Research established. Center for iPS Cell Research and Application established. Innovative Collaboration Center closed (merged with Office of Society-Academia Collaboration for Innovation). Nano Medicine Merger Education Unit closed. Advanced Medical Engineering Research Unit closed. Career-Path Promotion Unit for Young Life Scientists closed. Micro/Nano Fabrication Hub in Kyoto Univ. established.
2011	Radioisotope Research Center closed (merged with Environment, Safety, and Health Organization). Environment Preservation Center closed (merged with Environment, Safety, and Health Organization). International Center closed (merged with Organization for the Promotion of International Relations). Center for Student Health closed (merged with Environment, Safety, and Health Organization). Institute of Sustainability Science closed. Kyoto University Pioneering Research Unit for Next Generation closed.
2012	Young Researcher Development Center was renamed the Hakubi Center.



ORGANIZATION CHART

(As of May 1, 2012)



* Each of the (Executive) Vice-Presidents is in charge of a different area of university affairs.

** 26 members, 13 of whom are Kyoto University faculty and staff.

*** Including the Organization for the Promotion of International Relations.



STAFF AND STUDENTS

UNIVERSITY STAFF (As of May 1, 2012)

Position	Number
President	1
Executive Directors	7
Auditors	2
Professors	1,028
Associate Professors	775
Senior Lecturers	157
Assistant Professors	866
Sub-Total	2,836
Non-teaching Staff	2,603
Specialist Staff	5
Total	5,444

ENROLLMENT

(As of May 1 of each year)

Academic Year	Undergraduate	Graduate	Total
2012	13,551	9,244	22,795
2011	13,537	9,282	22,819
2010	13,473	9,314	22,787
2009	13,417	9,319	22,736

NUMBER OF GRADUATES

Academic Year	Undergraduates	Graduates		Total
		Master's Course	Doctoral Course	
2011	2,893	2,171	780	5,844
2010	2,842	2,188	688	5,718
2009	2,825	2,170	755	5,750
2008	2,866	2,143	783	5,792

NUMBER OF DEGREES CONFERRED

Academic Year	Master's Degree	Doctoral Degree
		New System
2011	2171	891
2010	2,188	776
2009	2,170	870
2008	2,143	910

Note: Doctoral Degree, Old System (1897-1957) Total 9,651

NUMBER OF PROFESSIONAL DEGREES CONFERRED

Academic Year	Graduates	
2011	Law School	164
	School of Public Health	28
	School of Government	38
	Graduate School of Management	83
2010	Law School	202
	School of Public Health	28
	School of Government	50
	Graduate School of Management	66
2009	Law School	192
	School of Public Health	38
	School of Government	42
	Graduate School of Management	71

FINANCE

Consolidated Revenues and Expenses in Net Assets

The following charts show Kyoto University's total revenues and expenses for the 2011 fiscal year. They also identify the major components of these revenues and expenses. Kyoto University has several revenue sources, the largest of which are university administration grants. The largest expense is the instruction and research. All other expenses are incurred in supporting instruction and research and in funding Kyoto University's public service activities.

Revenues in FY 2011

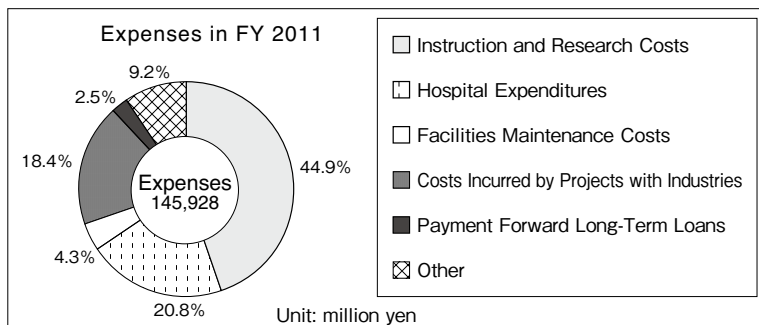
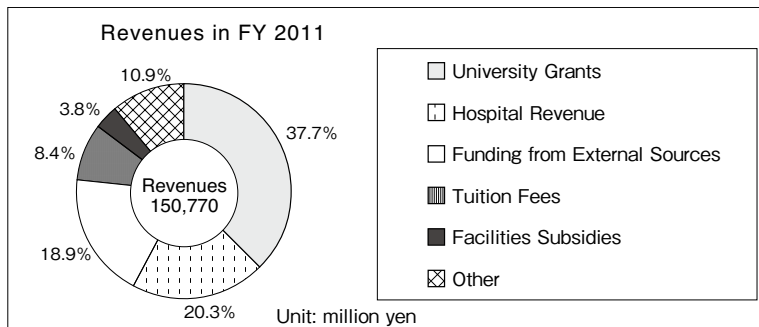
Unit: million yen US \$ 1 = ¥77.7*

University Grants	56,843	731.57	37.7%
Hospital Revenue	30,603	393.86	20.3%
Funding from External Sources	28,425	365.83	18.9%
Tuition Fees	12,656	162.88	8.4%
Facilities Subsidies	5,771	74.27	3.8%
Other	16,472	211.99	10.9%
Total	150,770	1940.41	

Expenses in FY 2011

Unit: million yen US \$ 1 = ¥77.7*

Instruction and Research costs	65,549	843.62	44.9%
Hospital Expenditures	30,332	390.37	20.8%
Facilities Maintenance Costs	6,255	80.50	4.3%
Costs Incurred by Projects with Industries	26,830	345.30	18.4%
Payment Forward Long-term Loans	3,601	46.34	2.5%
Other	13,361	171.96	9.2%
Total	145,928	1878.10	



Assets	Category	Unit: million yen US \$ (1 = ¥77.7 *)	
	Fixed assets	405,193	5,214.84
	Land	166,618	2,144.38
	Buildings	210,169	2,704.88
	Accumulated depreciation	▲ 73,473	▲ 945.60
	Structures	15,866	204.20
	Accumulated depreciation	▲ 6,162	▲ 79.31
	Accumulated impairment loss	▲ 1	▲ 0.01
	Equipment & furnishings	113,481	1,460.50
	Accumulated depreciation	▲ 76,227	▲ 981.04
	Books	33,359	429.33
	Art & other valuables	756	9.73
	Construction in progress	4,199	54.04
	Patents	125	1.61
	Leaseholds	1,259	16.20
	Software	113	1.45
	Investment securities	9,600	123.55
	Long-term savings	4,600	59.20
	Other fixed assets	905	11.65
	Current assets	46,066	592.87
	Cash & bank savings	16,569	213.24
	Accounts receivable of student payments	256	3.29
	Reserve for uncollectable payments	▲ 71	▲ 0.91
	Accounts receivable of hospital revenue	6,913	88.97
	Reserve for uncollectable payments	▲ 444	▲ 5.71
	Accrued revenue	1,208	15.55
	Marketable securities	20,999	270.26
	Inventories	31	0.40
	Medicine & supplies	402	5.17
	Other current assets	202	2.60
	Total assets	451,260	5,807.72

* Calculations based on average exchange rate of late November 2011.



Liabilities	Category	Unit: million yen	US \$ (1 = ¥77.7 *)
	Fixed liabilities	107,074	1,378.04
	Contra accounts for services & assets	78,959	1,016.20
	Long-term balance of donations	132	1.70
	Long-term loans payable to the Center for National University Finance and Management	13,752	176.99
	Long-term loans payable	2,826	36.37
	Long-term accrued amount payable	11,256	144.90
	Decommissioning liabilities	5	0.06
	Other fixed liabilities	142	1.81
	Current liabilities	55,548	714.90
	Grants for administrative services carry over	7,862	101.18
	Balance of donations	14,979	192.78
	Funds for research & other entrusted activities	3,833	49.33
	Current portion of loans payable to the Center for National University Finance and Management	2,370	30.50
	Current portion of long-term loans payable	413	5.32
	Accrued amount payable	21,575	277.67
	Decommissioning liabilities	1	0.01
	Other current liabilities	4,515	58.11
	Total liabilities	162,623	2,092.96

Net Assets	Category	Unit: million yen	US \$ (1 = ¥77.7 *)
	Capital	244,526	3,147.05
	National government investments	244,526	3,147.05
	Capital surplus	15,545	200.06
	Capital surplus	85,055	1,094.66
	Accumulated depreciation charged to capital surplus	▲ 69,499	▲ 894.43
	Accumulated impairment loss charged to capital surplus	▲ 10	▲ 0.13
	Retained earnings	28,565	367.63
	Carried forward accumulated reserve	25,896	333.28
	Unappropriated retained earnings	1,736	22.34
	Net assets	288,637	3,714.76
	Total liabilities & net assets	451,260	5,807.72

* Calculations based on average exchange rate of late November 2011.

Statement of Income 2011 Fiscal Year

Ordinary Expenses	Category	Unit: million yen	US \$ (1 = ¥77.7 *)
	Operating expenses	137,958	1,775.52
	Education expenses	5,173	66.58
	Research expenses	23,016	296.22
	Expenses for medical practice	19,720	253.80
	Support for education & research	3,321	42.74
	Expenses for entrusted activities	21,159	272.32
	Personnel expenses	65,570	843.89
	Management costs	4,156	53.49
	Finance costs	991	12.75
	Miscellaneous losses	52	0.67
	Total ordinary expenses	143,158	1,842.45



Ordinary Revenues	Category	Unit: million yen US \$ (1 = ¥77.7 *)	
	Revenue from grants for administrative services	52,292	673.00
	Revenues from tuition and fees	13,736	176.78
	Hospital revenues	31,467	404.98
	Revenues from entrusted activities	20,365	262.10
	Revenues from donations	4,403	56.67
	Contra account for services & assets	8,562	110.19
	Other revenues	14,139	181.97

Total ordinary revenues	144,964	1,865.69
--------------------------------	----------------	-----------------

Ordinary profit	1,807	23.26
Extraordinary loss	153	1.97
Extraordinary income	33	0.42
Withdrawals from the accumulated reserve for education & research	51	0.66

Total income for the year	1,737	22.36
----------------------------------	--------------	--------------

* Calculations based on average exchange rate of late November 2011.

UNIVERSITY FACILITIES

Library Collection

As of March 31, 2012

	Number of Books			Number of Magazines and Periodicals		
	Japanese	International	Total	Japanese	International	Total
Main University Library	627,461	256,476	883,937	14,301	9,705	24,006
Other University Libraries and Reference Rooms	2,779,145	2,904,567	5,683,712	44,619	46,214	90,833
Combined Total	3,406,606	3,161,043	6,567,649	58,920	55,919	114,839

Number of Visitors to the Kyoto University Museum

	Paying Visitors			Non-Paying Visitors	Total
	Individuals	Groups	Sub-total		
2011	14,400	1,036	15,436	26,829	42,265
2010	20,840	1,030	21,870	30,358	52,228
2009	13,843	916	14,759	20,243	35,002
2008	14,487	662	15,149	22,029	37,178
2007	15,351	1,300	16,651	19,419	36,070

Number of Visitors to the Seto Marine Biological Laboratory Aquarium

	Individuals	Groups	Paying Visitors	Non-Paying Visitors	Total
2011	54,806	2,696	57,502	6,656	64,158
2010	54,608	2,942	57,550	7,076	64,626
2009	52,483	2,621	55,104	7,581	62,685
2008	55,910	3,227	59,137	7,274	66,411
2007	56,725	2,316	59,041	6,722	65,763

Kyoto University Hospital

Statistics for 2010

Number of Beds	Number of Inpatients	Number of Outpatients
1,121	368,403	672,256

INDUSTRY-ACADEMIA COLLABORATION

Invention Disclosure

FY	Number of Invention Disclosure Forms Submitted
2011	412
2010	396
2009	405
2008	405
2007	390
2006	392
2005	454

Fiscal Year (FY): April 1-March 31

Patent

FY	DOMESTIC		FOREIGN	
	Number of Patent Applications	Number of Patents Issued	Number of Patent Applications ¹	Number of Patents Issued
2011	237 (174)	109 (80)	298 (196)	79 (23)
2010	230 (169)	68 (38)	261 (150)	41 (25)
2009	231 (166)	45 (21)	224 (107)	37 (17)
2008	219 (154)	22 (10)	221 (99)	26 (18)
2007	185 (135)	20 (12)	240 (137)	9 (8)
2006	275 (184)	14 (7)	239 (130)	9 (6)
2005	316 (170)	14 (2)	218 (116)	0 (0)
Total		216 (97)		131 (80)

Fiscal Year (FY): April 1 - March 31

The Number of joint applications or co-owned patents is shown in brackets

¹ Applications under the PCT etc., count as 1 regardless of the number of designated countries.

Exploitation of Intellectual Property

FY	PATENTS		COPYRIGHTS ¹		RESEARCH MATERIALS		TOTAL
	Number of Licenses ²	Revenue ³	Number of Licenses ²	Revenue ³	Number of Licenses ²	Revenue ³	Revenue ³
2011	101	184,594	14	4,172	25	18,801	207,567
2010	59	154,575	6	2,182	28	15,865	172,622
2009	58	65,432	8	3,675	46	23,917	93,024
2008	47	48,424	7	6,812	38	47,217	102,453
2007	34	23,694	7	12,904	15	19,242	55,840
2006	19	17,002	7	6,453	1	10,500	33,955
2005	15	9,814	12	12,965	0	0	22,779

Fiscal Year (FY): April 1-March 31

¹ Databases and computer programs or digital content (except research papers, books, or reports)

² Including assignment

³ Unit / thousand yen

Collaborative Research

FY	Number of Projects	Revenue ¹
2005	504	2,174,118
2006	643	2,987,601
2007	766	3,469,663
2008	820	3,903,903
2009	813	5,613,524
2010	861	6,231,529
2011	844	5,782,291

Fiscal Year (FY): April 1-March 31

¹ Unit/thousand yen

Sponsored Research

FY	Number of Projects	Revenue ¹
2005	664	9,282,207
2006	707	11,795,015
2007	698	10,903,624
2008	684	12,729,587
2009	728	14,137,356
2010	780	11,626,147
2011	847	12,718,523

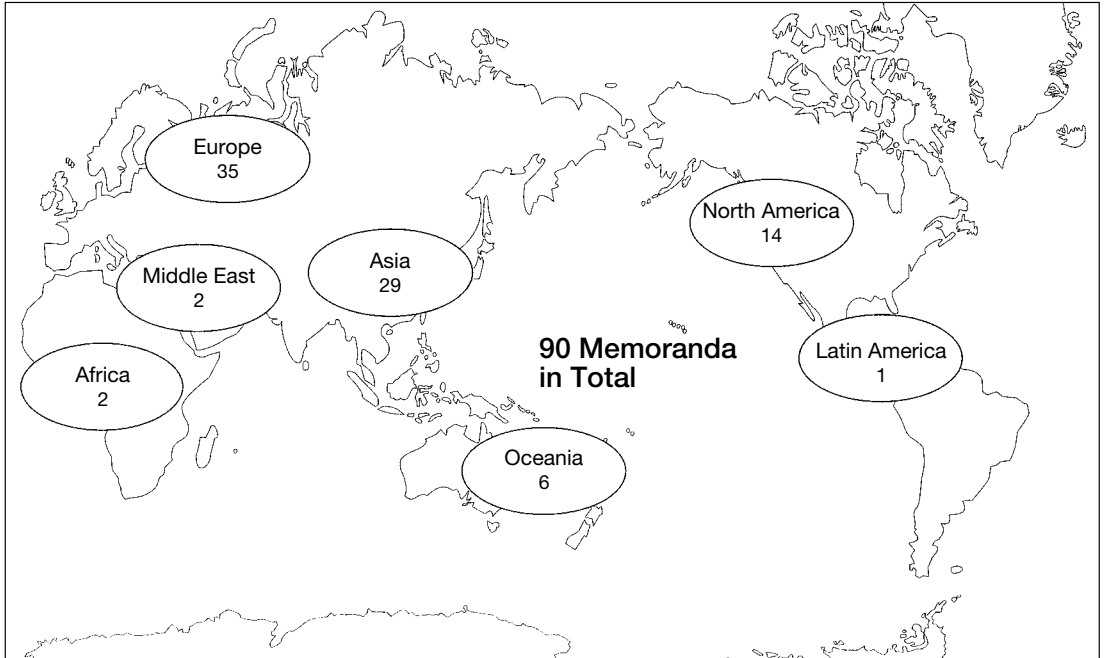
Fiscal Year (FY): April 1-March 31

¹ Unit/thousand yen



ACADEMIC EXCHANGE MEMORANDA

Distribution Map of Partner Universities and Consortia



Kyoto University has concluded general memoranda for academic exchange and cooperation with 86 universities, three university alliances, one national research academy as indicated below.

(As of May 1, 2012)

Country/Region	Universities	year of conclusion	☆
Australia	University of Queensland	1981	
	University of Melbourne	1997	☆
	University of New South Wales	1998	☆
	University of Sydney	1999	☆
	Australian National University	2008	☆
Austria	University of Vienna	1993	☆
Belgium	Universit catholique de Louvain	1997	☆
Canada	La Conference des Recteurs et des Principaux des Universites du Quebec	1994	☆
	University of Waterloo	2003	☆
China	Northwest University (西北大学)	1980	
	Wuhan University (武汉大学)	1980	☆
	Peking University (北京大学)	1983	☆
	Tsinghua University (清华大学)	1998	☆
	Fudan University (复旦大学)	2002	☆
	Zhejiang University (浙江大学)	2003	☆
	University of Science and Technology of China (中国科学技术大学)	2005	☆
	Hong Kong University of Science and Technology (香港科技大学)	2005	☆
	Nanjing University (南京大学)	2006	☆
	Shanghai Jiao Tong University (上海交通大学)	2008	☆
Xi'an Jiaotong University (西安交通大学)	2008	☆	

Country/Region	Universities	year of conclusion	☆
Czech	Charles University	1990	
Egypt	The Egyptian Academy of Science, Research and Technology	2010	
Finland	University of Helsinki	2011	☆
France	Université de Paris 7	1979	
	Union des Universités de Strasbourg	1996	☆
	Le Consortium des universités de Grenoble (Grenoble I - Université Joseph Fourier, Grenoble II - Université Pierre Mendès France, Grenoble III - Université Stendhal and Institut National Polytechnique de Grenoble)	2000	☆
	Ecole Normale Supérieure	2009	☆
Germany	Free University of Berlin	1984	☆
	Ludwig-Maximilians-University of Munich	1989	☆
	Rhenish Friedrich-Willhelm University of Bonn	1990	☆
	Rupert Charles University of Heidelberg	1990	☆
	Humboldt University Berlin	1998	☆
	Technische Universität München	2006	☆
	Georg-August-Universität Göttingen	2011	☆
	Karlsruhe Institute of Technology	2011	☆
Indonesia	Bandung Institute of Technology	2006	
	University of Indonesia	2008	
Israel	Tel Aviv University	1999	☆
Italy	University of Siena	1989	
	University of Bologna	1995	
Korea	Kyungpook National University (慶北大学校)	1984	☆
	Seoul National University (ソウル大学校)	1991	☆
	Yonsei University (延世大学校)	1998	☆
	Korea University (高麗大学校)	2002	☆
	Korea Advanced Institute of Science and Technology (韓国科学技術院)	2005	
	Pohang University of Science and Technology (浦項工科大学校)	2007	☆
Laos	National University of Laos	2002	
Malaysia	University of Malaya	2008	
Mexico	University of Guadalajara	1983	☆
Netherlands	Leiden University	1997	☆
	University of Utrecht	1997	☆
New Zealand	University of Auckland	1997	☆
Russia	Moscow M.V. Lomonosov State University	1987	
Singapore	National University of Singapore	1999	☆
Sudan	University of Khartoum	2001	
Switzerland	Swiss Federal Institute of Technology Zurich	1989	
	University of Lausanne	1997	☆
Sweden	Stockholm University	1997	☆
	Uppsala University	1997	☆
	Royal Institute of Technology	2005	☆
Taiwan	National Taiwan University (国立台湾大学)	2005	☆
	National Tsing Hua University (国立清華大学)	2006	☆
Thailand	Kasetsart University	1984	☆
	Chulalongkorn University	2005	☆
Turkey	Koç University	2011	☆



Country/Region	Universities	year of conclusion	☆
U.K.	University of Sussex	1989	☆
	University of Oxford	1991	
	University of Cambridge	1997	
	University of Nottingham	1999	
	University of Edinburgh	2005	☆
	University of Sheffield	2006	☆
	University of Manchester	2006	☆
	University of Bristol	2011	
	Institute of Education, University of London	2011	
U. S. A.	Wayne State University	1985	
	Stanford University	1989	
	University of California	1990	☆
	University of California, Davis	2011	
	Polytechnic University	1990	
	Brown University	1992	
	George Washington University	1998	☆
	Tufts University	1998	
	University of Pennsylvania	1999	☆
	University of Hawai'i	2003	☆
	University of Michigan	2003	
University of Washington	2011	☆	
Vietnam	Vietnam National University, Hanoi	2007	
	Hue University	2007	
	Hanoi University of Technology	2009	
Others	ASEAN University Network (AUN) (アセアン大学連合)	2009	

☆ General Memorandum and Student Exchange Agreement

Universities with Student Exchange Agreement Only:

University of Hong Kong (2007)

Chinese University of Hong Kong (2007)

Fondation Nationale des Sciences Politiques (Science Po) / パリ政治学院 (2009)

University of Birmingham (2011)

University of Newcastle (2011)

☆ Individual faculties, graduate schools, institutes and centers of Kyoto University also have direct agreements with a broad range of institutions abroad. Details are available online.



RESEARCHERS FROM ABROAD

(April 2011-March 2012)

Countries and Regions		Number of Researchers
ASIA	Bangladesh	11
	Bhutan	3
	Brunei	8
	Cambodia	5
	China	363
	India	59
	Indonesia	154
	Korea	254
	Laos	11
	Malaysia	88
	Mongolia	3
	Myanmar	3
	Nepal	20
	Pakistan	5
	Philippine	23
	Singapore	44
	Sri Lanka	5
Taiwan	150	
Thailand	82	
Viet Nam	68	
NORTH AMERICA	Canada	65
	U.S.A	437
LATIN AMERICA	Argentine	1
	Brazil	10
	Chili	1
	Colombia	4
	El Salvador	1
	Peru	8
EUROPE	Austria	15
	Belgium	23
	Bulgaria	2
	Croatia	6
	Czech	9
	Denmark	18
	Finland	10
	France	155
	Germany	202
	Greece	4
	Hungary	46
	Iceland	2
	Ireland	2
	Italy	64
Kyrgyz	1	

Countries and Regions		Number of Researchers
EUROPE	Latvia	1
	Lithuania	1
	Netherlands	21
	Norway	8
	Poland	9
	Portugal	3
	Romania	2
	Russia	26
	Serbia	2
	Slovakia	8
	Slovenia	3
	Spain	30
	Sweden	23
	Switzerland	44
	U.K.	141
	Ukraine	3
	Uzbekistan	2
OCEANIA	Australia	63
	New Zealand	18
MIDDLE EAST	Iran	12
	Israel	15
	Kwait	1
	Lebanon	2
	Saudi Arabia	5
	Turkey	4
AFRICA	Algeria	1
	Botswana	1
	Burundi	1
	Cameroon	1
	Democratic Republic of Congo	1
	Egypt	16
	Ethiopia	8
	Gabon	1
	Gambia	3
	Ghana	4
	Kenya	5
	Morocco	1
	Nigeria	2
Senegal	3	
South Africa	4	
Tanzania	5	
Tunisia	1	
Total		2,950

The number of researchers from abroad doing research at Kyoto University, irrespective of their length of stay.



RESEARCHERS GOING ABROAD

(April 2011-March 2012)

Country/Region		Number of Researchers
ASIA	Azerbaijan	2
	Bangladesh	24
	Bhutan	29
	Brunei	3
	Cambodia	32
	China	859
	India	132
	Indonesia	277
	Korea	593
	Laos	63
	Malaysia	188
	Maldives	1
	Mogolia	10
	Myanmar	22
	Nepal	28
	Pakistan	3
	Philippine	37
	Singapore	141
	Sri Lanka	13
Taiwan	325	
Tajikistan	2	
Thailand	392	
Viet Nam	190	
NORTH AMERICA	Canada	232
	U.S.A	1,534
LATIN AMERICA	Argentina	3
	Bahamas	2
	Barbados	1
	Bolivia	1
	Brazil	29
	Chili	18
	Costa Rica	1
	Cuba	1
	Ecuador	3
	Mexico	19
	Peru	19
	Trinidad and Tobago	1
Uruguay	1	
EUROPE	Austria	115
	Belarus	1
	Belgium	56
	Bosnia and Herzegovina	4
	Bulgaria	3
	Croatia	18
	Cyprus	2
	Czech	45
	Denmark	36
	Estonia	6
	Finland	26
	France	453
	Georgia	1
	Germany	379
	Greece	26
	Hungary	28
	Iceland	2
	Ireland	17
	Italy	177
	Kazakhstan	4
Latvia	1	
Luxembourg	2	
Netherlands	111	
Norway	6	

Country/Region		Number of Researchers
EUROPE	Poland	60
	Portugal	35
	Romania	2
	Russia	46
	Serbia	2
	Slovakia	3
	Slovenia	4
	Spain	116
	Sweden	58
	Switzerland	122
	U.K.	344
	Ukraine	5
	Uzbekistan	8
OCEANIA	Australia	195
	Fiji	12
	New Zealand	37
	Palau	1
	Papua New Guinea	2
	Solomon Islands	1
MIDDLE EAST	Vanuatu	2
	Afganistan	1
	Bahrain	1
	Iran	2
	Israel	10
	Jordan	3
	Kwait	1
	Lebanon	1
	Oman	2
	Qatar	4
	Saudi Arabia	5
	Palestinion Authority	1
	Turkey	56
U.A.E	4	
AFRICA	Algeria	1
	Angola	1
	Botswana	5
	Burundi	2
	Cameroon	22
	Congo	2
	Democratic Republic of Congo	10
	Egypt	31
	Ethiopia	8
	Gabon	8
	Ghana	6
	Guinea	8
	Kenya	31
	Madagascar	3
	Mauritius	1
	Morocco	9
	Mozambique	1
	Namibia	6
	Nigeria	1
	Niger	10
Rwanda	4	
Senegal	4	
South Africa	10	
Tanzania	26	
Tunisia	2	
Uganda	12	
Zambia	7	
Others	1	
Total		8,128

The number of researchers going abroad to do research, irrespective of their length of stay.



STUDENTS FROM ABROAD

(As of May 1, 2012)

Country/Region	Classification	Under graduates	Graduates				Research Students etc*	Total	
			Auditors	Master's Course	Doctoral Course	Professional Course			Auditors
ASIA	Bangladesh			3	12			15	
	Brunei				1			1	
	Cambodia				5			5	
	China	91	19	256	246	45	19	69	745
	East Timor							1	1
	India			6	14			7	27
	Indonesia	4		11	30		1	5	51
	Korea	58	10	40	118	7	1	21	255
	Laos				1			1	2
	Malaysia	1		4	20	1		3	29
	Mongolia	1		3	5	1		1	11
	Myanmar			4	4			1	9
	Nepal			3	8				11
	Pakistan			1	5				6
	Philippines			4	10	1		1	16
	Singapore	2	1		1				4
	Sri Lanka				3			1	4
Taiwan		4	15	42	14	2	10	87	
Thailand	4	2	9	39	3	1	1	59	
Viet Nam	4		5	31	4	2	1	47	
NORTH AMERICA	Canada		7	2	2		1	3	15
	U.S.A.		3	8	8			4	23
LATIN AMERICA	Argentina	1		1	2			1	5
	Bolivia				1				1
	Brazil	1		7	7			3	18
	Chile			2	1			1	4
	Colombia		1	1				1	3
	Dominican Republic			1					1
	Ecuador				1				1
	Mexico		1		4		1		6
	Paraguay			1					1
	Peru			2	2			1	5
Uruguay				1				1	
Venezuela			1		1			2	
EUROPE	Austria		1						1
	Azerbaijan			1	1	1			3
	Belarus	1		1					2
	Belgium		1	1	3				5
	Bulgaria		1		2			1	4
	Croatia				2			1	3
	Denmark							1	1
	Estonia				1				1
	Finland	1			2				3
	France		7	1	4		6	2	20
	Georgia	1		1					2
	Germany		7	1	4		3	1	16
	Greece				1				1
	Hungary	1		2	2			1	6
Italy				1		3		4	
Latvia				1				1	
Lithuania			1	1			1	3	

*Including research fellows

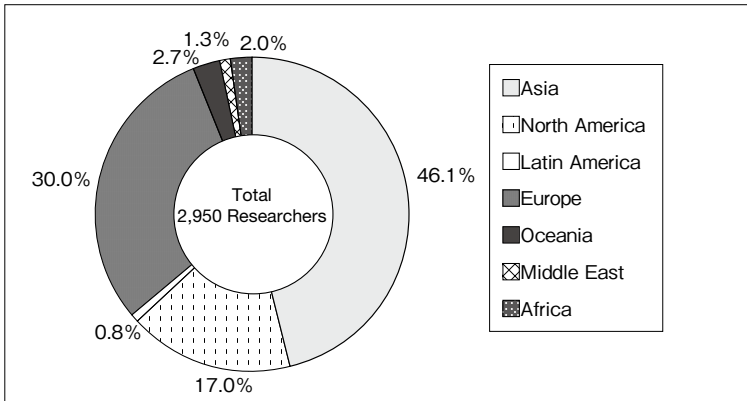


Classification Country / Region		Under gradu-ates	Graduates				Auditors	Research Students etc*	Total
			Auditors	Master's Course	Doctoral Course	Professional Course			
	Macedonia				2				2
	Netherlands		2		1		2		5
	Norway				1				1
	Poland			1	1				2
	Portugal		1					1	2
	Romania			1				1	2
	Russia		1	3	3			2	9
	Slovakia				1				1
	Spain				3		1	1	5
	Sweden		6	1				1	8
	Switzerland		1						1
	Ukraine			2	3				5
	U.K.			4	3	6		1	14
Uzbekistan	1				1			2	
OCEANIA	Australia		3	2	4		1		10
	New Zealand			2	1				3
	Tonga						1		1
MIDDLE EAST	Afghanistan			3	1				4
	Bahrain						1		1
	Iraq				1		1		2
	Iran			2	13				15
	Israel		2				2		4
	Kuwait				1				1
	Oman			1					1
	Syria			1	2			2	5
	Turkey			2	1			2	5
Yemen			1	1	1			3	
AFRICA	Cameroon				1				1
	Congo, D.R.				2				2
	Djibouti						1		1
	Egypt				11		2		13
	Ethiopia				2				2
	Ghana				1				1
	Kenya	2			4				6
	Libya			1	1				2
	Malawi				1				1
	Mali				1				1
	Morocco				1				1
	Mozambique				1				1
	Nigeria				1			1	2
	South Africa				1			1	2
	Sudan				2			1	3
	Swaziland						1		1
Tanzania			1					1	
Tunisia				2		1		3	
Zambia				1				1	
Zimbabwe				1				1	
Total		174	85	426	730	80	45	167	1,707



EXCHANGE OF RESEARCHERS AND STUDENTS

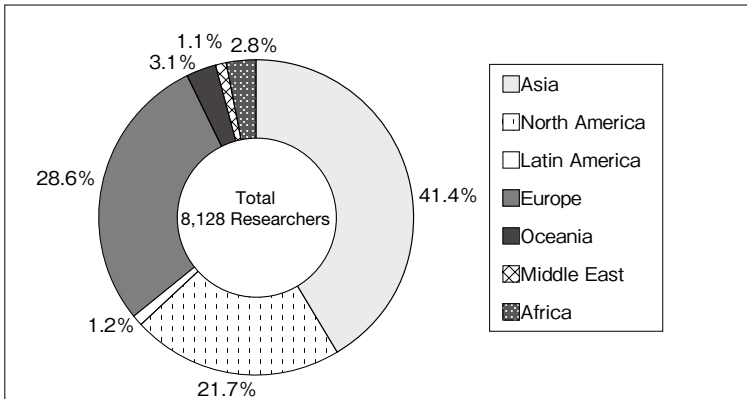
Researchers from Abroad (April 2011-March 2012)



Top 5 countries / regions

U.S.A.	437
China	363
Korea	254
Germany	202
France	155

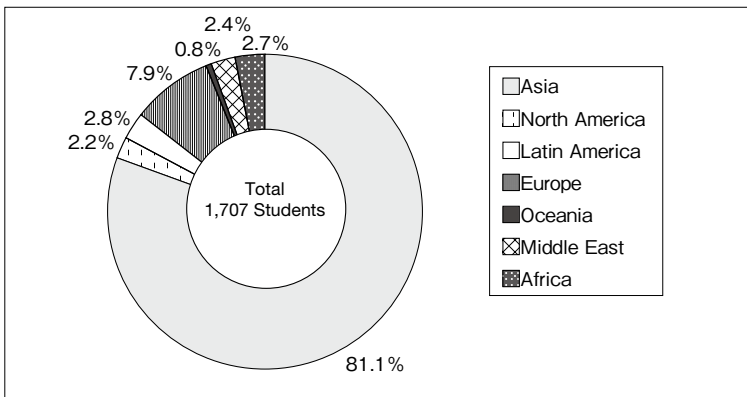
Researchers Going Abroad (April 2011-March 2012)



Top 5 countries / regions

U.S.A.	1,534
China	859
Korea	593
France	453
Thailand	392

Students from Abroad (As of May 1, 2012)



Top 5 countries / regions

China	745
Korea	255
Taiwan	87
Thailand	59
Indonesia	51



KYOTO UNIVERSITY INTERNATIONAL SYMPOSIA

	Date	Place	Title	Remarks
1	Jan 13, 2001	Santa Clara, CA, USA	Network and Media Computing	
2	Nov 28, 2001 Nov 30, 2001	London, Edinburgh, UK	The Changes in the Japanese Economy Facing the New Century	Jointly organized with the University of London and the University of Edinburgh
3	Sept 3-4, 2002	Montreal, CANADA	Post-Petrofuels in the 21st Century-Prospects in the Future of Biomass Energy	
4	Dec 6-7, 2003	Ann Arbor, MI, USA	Self, Cognition, and Emotion	Jointly organized with the University of Michigan
5	Jan 27-29, 2005	SINGAPORE	Regulation of Cell Fate and Cell Function	Jointly organized with the National University of Singapore
6	Oct 8-9, 2005	Beijing, CHINA	Plant Sciences in Japan and China-from Genomics to Breeding	Jointly organized with Chinese Academy of Agricultural Sciences
7	Nov 23-24, 2005	Bangkok, THAILAND	Coexistence with Nature in a 'Globalizing' World-Field Science Perspectives	Jointly organized with Chulalongkorn University, Thammasat University and Kasetsart University
8	Nov 23-25, 2006	Bangkok, THAILAND	Towards Harmonious Coexistence within Human and Ecological Community on this Planet	
9	June 22-23, 2007	Kyoto, JAPAN	Intergrating Global Environmental Studies towards Human Security	
10	July 26-28, 2007	Bandung, INDONESIA	Active Geosphere Science	Jointly organized with Bandung Institute of Technology
11	Oct 9-11, 2008	Shanghai, CHINA	Frontier Bioscience in Modern Medicine	Special support from Fudan University
12	Dec 5-6, 2008	Kyoto, JAPAN	Transforming Racial Images: Analyses of Representations	
13	Dec 11-13, 2009	Kyoto, JAPAN	New Horizons of Academic Visual-Media Practices	
14	June 24, 2007	Xi'an, CHINA	High Resolution Digitization of Asian World Heritage	Special support from Xi'an Jiaotong University
15	Sept 19-20, 2010	Nagoya, JAPAN	Biodiversity, Zoos and Aquariums" The Message from Animals"	Jointly organized with Port of Nagoya Public Aquarium and Nagoya Higashiyama Zoo
16	Sept 7-9, 2011	Istanbul, TURKEY	Innovative and Sustainable Development	Jointly organized with the Koç University
17	Dec 15-16, 2011	Kyoto, JAPAN	1st AEARU Symposium on the Culture of Chinese Characters	Jointly organized with the AEARU (The Association of East Asian Research Universities)
18	May 24-25, 2012	Bangkok, THAILAND	Partnering Asian Academics toward Human Security Development	Jointly organized with the AUN and Chulalongkorn University
19	July 27, 2012	Kyoto, JAPAN	Health Concerns in the Wake of the Tohoku Triple Disaster	Jointly organized with Harvard University



LIST OF OVERSEAS OFFICES AND FACILITIES

(As of October 1, 2012)

	Affiliation	Name	Location	Year Established
1	Graduate School of Economics	Kyoto University - Renmin University joint Research Center	Beijing, China	2008
2	Graduate School of Engineering	Cooperative Research and Education Center for Environmental Technology at Tsinghua University	Shenzhen, China	2005
3	Graduate School of Engineering	Global Center of Excellence Kyoto University - Institut Teknologi Bandung for GCOE Joint Research and Education Center	Bandung, Indonesia	2008
4	Graduate School of Engineering	the Joint Education and Research Centre on AIT Campus under the Global Centre of Excellence, Kyoto University	Pathumthani, Thailand	2008
5	Graduate School of Engineering	Global Center of Excellence Kyoto University - the Municipal Corporation of Greater Mumbai(MCGM) for GCOE Joint Research and Education Center	Mumbai, India	2009
6	Graduate School of Engineering	Global Centre of Excellence Kyoto University - Centre for Maritime Studies National University of Singapore Transport Logistics Joint Research Centre	Singapore, Singapore	2008
7	Graduate School of Engineering	Kyoto University - University of Malaya Overseas Base in Malaysia for Education and Research	Kuala Lumpur, Malaysia	2010
8	Graduate School of Science	Satellite Office at Chulalongkorn University	Bangkok, Thailand	2003
9	Graduate School of Science	Research Base for Biodiversity of African Tropical Forest	Libreville, Gabon	2009
10	Graduate School of Science/ Research Institute for Sustainable Humansphere	Satellite Office at Institut Teknologi Bandung	Bandung, Indonesia	2003
11	Graduate School of Science, Observatories	CHAIN Peru Station	Ica, Lima, Peru	2010
12	Graduate School of Agriculture	Khon Kean Research Office of the Graduate School of Agriculture, Kyoto University	Khon Kean, Thailand	1996
13	Graduate School of Agriculture	Japanese Research-Team Laboratory, Kinabalu Park Headquarters	Kota Kinabalu, Malaysia	1995
14	Graduate School of Agriculture	Japanese Research-Team Laboratory, Deramakot Forest Reserve	Sandakan, Malaysia	2003
15	Graduate School of Asian and African Area Studies	Ethiopia Field Station	Addis Ababa, Ethiopia	2003
16	Graduate School of Asian and African Area Studies	Cameroon Field Station	Ndongo Village, Cameroon	2003
17	Graduate School of Asian and African Area Studies	Nairobi Field Station	Nairobi, Kenya	2003
18	Graduate School of Asian and African Area Studies	Zambia Field Station	Lusaka, Zambia	2003
19	Graduate School of Asian and African Area Studies	Tanzania Field Station	Dar es Salaam, Tanzania	2003
20	Graduate School of Asian and African Area Studies	Namibia Field Station	Windhoek, Namibia	2008



	Affiliation	Name	Location	Year Established
21	Graduate School of Asian and African Area Studies / Center for Southeast Asian Studies	Laos Field Station	Vientiane, Laos	2002
22	Graduate School of Asian and African Area Studies / Center for Southeast Asian Studies	Makassar Field Station	Makassar, Indonesia	2003
23	Graduate School of Asian and African Area Studies / Center for Southeast Asian Studies	Cambodia Field Station	Phnom Penh, Cambodia	2010
24	Graduate School of Asian and African Area Studies / Center for Southeast Asian Studies	Indonesia Pekanbaru Field Station	Pekanbaru, Indonesia	2010
25	Graduate School of Asian and African Area Studies / Center for Southeast Asian Studies	Myanmar Field Station	Yangon, Myanmar	2003
26	Graduate School of Global Environmental Studies	Contact Office of Research and Education of Graduate School of Global Environmental Studies	Hue, Vietnam	2006
27	Graduate School of Global Environmental Studies/Graduate School of Engineering	Hanoi Office	Hanoi, Vietnam	2008
28	Graduate School of Global Environmental Studies	Hue Office	Hue, Vietnam	2008
29	Graduate School of Global Environmental Studies	Shenzhen Office	Shenzhen, China	2008
30	Institute of Advanced Energy	Thai Research Station Collaborative Research Laboratory	Pathumthani, Thailand	2003
31	Research Institute for Sustainable Humansphere	Equatorial Atmosphere Radar	Bukittinggi, Indonesia	2001
32	Research Institute for Sustainable Humansphere	RISH-RDUB Satellite Office	Bogor, Indonesia	2004
33	Research Institute for Sustainable Humansphere	MHP Acacia Research Office	Muaraenim, Indonesia	2005
34	Disaster Prevention Research Institute	Seattle Satellite Office	Seattle, USA	1996
35	Primate Research Institute	Research Project on Bonobos in the Luo Reserve	Djolu, Congo	1973
36	Primate Research Institute	Bossou-Nimba Research Station	Bossou, Guinea	1976
37	Primate Research Institute	Kalinzu Forest Research Project by the Primate Research Institute	Bushenyi, Uganda	1997
38	Center for Southeast Asian Studies	Bangkok Liaison Office	Bangkok, Thailand	1963
39	Center for Southeast Asian Studies	Jakarta Liaison Office	Jakarta, Indonesia	1970
40	Center for Southeast Asian Studies	Kuching Field Station	Kuching, Malaysia	2011
41	Office of Society-Academia Collaboration for Innovation	Kyoto University Liaison Office at Tsinghua University	Beijing, China	2006
42	Office of Society-Academia Collaboration for Innovation	Euro Representative of Kyoto University SACI	London, U.K.	2009
43	Center for Ecological Research	Field Station for Tropical Forest and Biodiversity Studies	Miri, Malaysia	1991
44	Center for Integrated Area Studies	CIAS Lima Office	Lima, Peru	2006
45	Wildlife Research Center	Kyoto University African Ape Expedition	Kigoma, Tanzania	1965
46	Wildlife Research Center	African Anthropological and Biological Field Research Center	Arusha, Tanzania	2006
47	Wildlife Research Center	Kuala Sungai Danum Research Station	Danum Valley, Malaysia	2009
48	Institute for Integrated Cell-Material Sciences	iCeMS Satellite at NCBS-inStem	Bangalore, India	2011
49	Organization for the Promotion of International Relations(OPIR)	Vietnam National University, Hanoi - Kyoto University Collaboration Office	Hanoi, Vietnam	2010



KYOTO UNIVERSITY

CONTACT

For Researchers

International Affairs Division

Yoshida-Honmachi, Sakyo-ku, Kyoto 606-8501

Tel: +81-75-753-2047

Fax: +81-75-753-2042

E-mail: koryu52@mail.adm.kyoto-u.ac.jp

URL: <http://www.kyoto-u.ac.jp>

For Students

Foreign Student Division

Yoshida-Honmachi, Sakyo-ku, Kyoto 606-8501

Tel: +81-75-753-2543

Fax: +81-75-753-2562

E-mail: ryugak78@mail.adm.kyoto-u.ac.jp

URL: <http://www.kyoto-u.ac.jp>