

# KYOTO UNIVERSITY

FACTS AND FIGURES

2012



## CONTENTS

Chronological Table	1
Organization Chart	4
Staff and Students	5
Finance	6
University Facilities	9
Industry-Academia Collaboration	10
Academic Exchange Memoranda	11
Researchers from Abroad	14
Researchers going Abroad	15
Students from Abroad	16
Exchange of Researchers and Students	18
Kyoto University International Symposia	19
List of Overseas Offices and Facilities	20

# CHRONOLOGICAL TABLE

Year	Contents
<b>1897</b>	<b>Founded as Kyoto Imperial University. College of Science and Engineering established.</b>
1899	Colleges of Law and Medicine established. University Library and University Hospital established.
1906	College of Letters established.
1914	College of Science and Engineering divided into College of Science and College of Engineering.
1919	Colleges reorganized into five faculties under the new University Ordinance. The Faculty of Economics was established.
1923	Faculty of Agriculture established.
1926	Institute for Chemical Research established.
1939	Institute for Research in Humanities established.
1941	Chest Disease Research Institute and Institute of Atomic Energy established.
1944	Wood Research Institute established.
1946	Research Institute for Food Science established.
<b>1947</b>	<b>Renamed Kyoto University</b>
1949	Reorganized on four-year schooling basis (with the exception of six years for medicine) under the new education system. Faculty of Education established. Branch School established for general education of freshmen and sophomores.
1951	Disaster Prevention Research Institute established.
1953	Graduate courses under the new system were opened. Yukawa Institute for Theoretical Physics established.
1954	Branch School renamed College of Liberal Arts and Sciences.
1956	Institute for Virus Research established.
1960	Faculty of Pharmaceutical Sciences established.
1962	Institute of Economic Research established.
1963	Research Institute for Mathematical Sciences and Research Reactor Institute established.
1965	Center for Southeast Asian Studies established.
1966	Center for Student Health established.
1967	Primate Research Institute established.



Year	Contents
1969	Data Processing Center established.
1971	Radioisotope Research Center established.
1972	Research Center for Sports Science established.
1975	College of Medical Technology established.
1976	Plasma Physics Laboratory and Radiation Biology Center established.
1977	Environment Preservation Center and Center for Archaeological Operations established.
1978	Educational Center for Information Processing established.
1980	Research Center for Biomedical Engineering established.
1981	Radio Atmospheric Science Center established.
1986	Center for African Area Studies established.
1988	Center for Molecular Biology and Genetics established.
1990	Center for Student Exchange established.
1991	Graduate School of Human and Environmental Studies and Center for Ecological Research established.
1992	College of Liberal Arts and Sciences reorganized and renamed Faculty of Integrated Human Studies.
1994	Research Center for Higher Education established.
1995	Venture Business Laboratory established.
1996	Graduate School of Energy Science established. Institute of Atomic Energy and Plasma Physics Laboratory merged into the Institute of Advance Energy. Student Counseling Center was established.
1997	Kyoto University Museum was established. The Educational Center for Information Processing reorganized and renamed Center for Information and Multimedia Studies.
1998	Graduate School of Asian and African Area Studies and Graduate School of Informatics established. Chest Disease Research Institute reorganized and renamed Institute for Frontier Medical Sciences. Research Center for Biomedical Engineering closed.
1999	Graduate School of Biostudies and Counseling Center established. Student Counseling Center was closed.
2000	Radio Atmospheric Science Center reorganized and renamed Radio Science Center for Space and Atmosphere. University Archives were established.
2001	International Innovation Center was established. Research Institute for Food Science closed. Center for Data Collection and Analysis established.

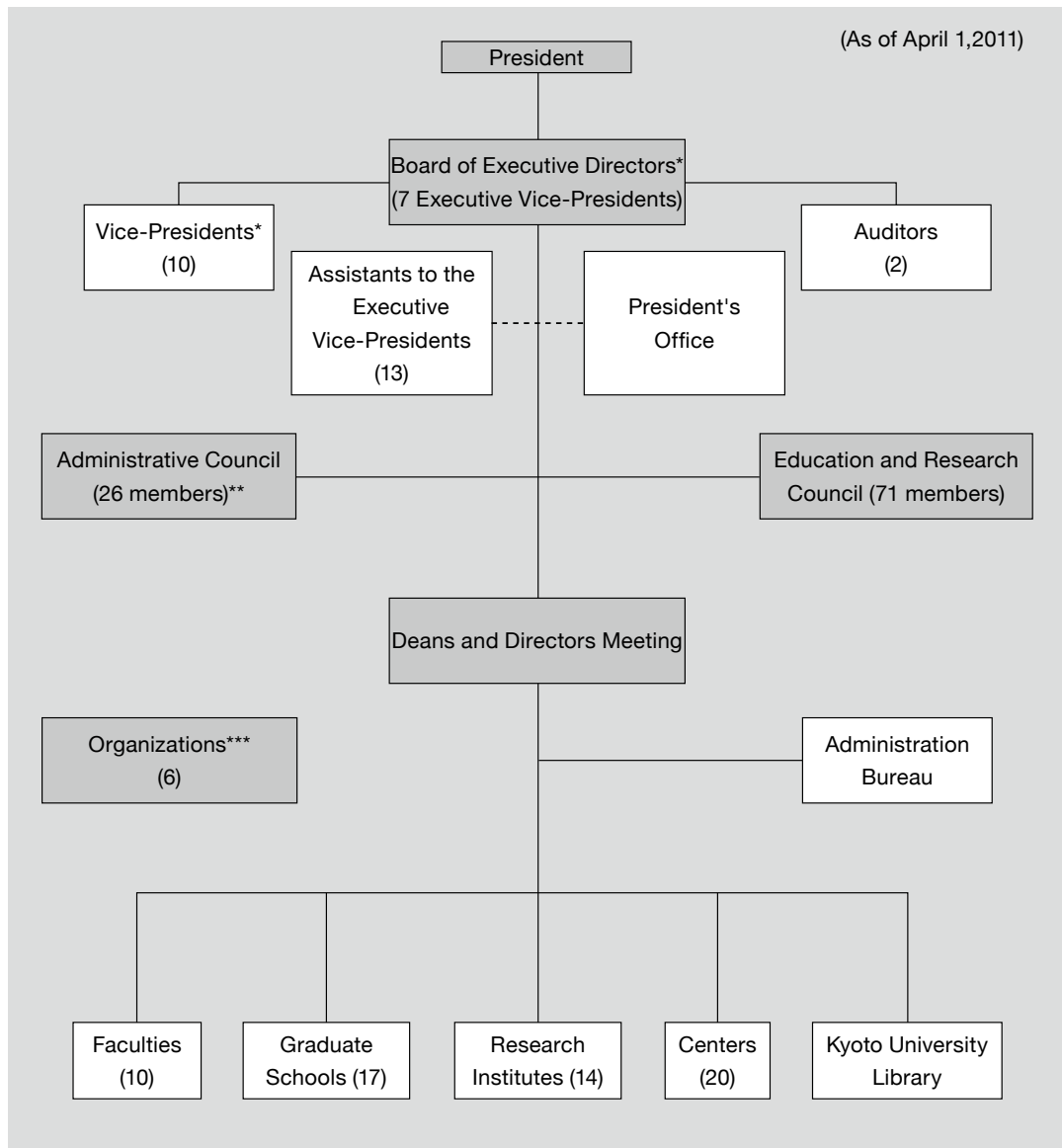


Year	Contents
2002	Graduate School of Global Environmental Studies established. Center for Data Processing and Center for Information and Multimedia Studies reorganized and renamed Academic Center for Computing and Multimedia Studies. Research Center for Low Temperature and Materials Sciences and Fukui Institute for Fundamental Chemistry established.
2003	Research Center for Sports Science closed. Seto Marine Biological Laboratory, University Forest, Subtropical Plant Institute and Fisheries Research Station merged into the Field Science Education and Research Center. Research Center for Higher Education reorganized and renamed Center for the Promotion of Excellence in Higher Education. Institute for the Promotion of Excellence in Higher Education and Law School established. The College of Medical Technology merged into Graduate School of Medicine.
<b>2004</b>	<b>Kyoto University incorporated in accordance with the National University Corporation Law.</b>
	Wood Research Institute and Radio Science Center for Space and Atmosphere unified as Research Institute for Sustainable Humanosphere. Center for Southeast Asian Studies given Institute status. Center for Molecular Biology and Genetics and Center for Data Collection and Analysis closed.
2005	Organization for the Promotion of International Relations, Environment, Safety, and Health Organization, International Innovation Organization, Institute for Information Management and Communication, and Library Network established. Center for Student Exchange reorganized and renamed International Center.
2006	School of Government established. Graduate School of Management established. Center for Integrated Area Studies established. Nano Medicine Merger Education Unit established. Institute of Sustainability Science established. Kyoto University Pioneering Research Unit for Next Generation established. Center for Women Researchers established.
2007	Kokoro Research Center established. Advanced Medical Engineering Research Unit established. Career-Path Promotion Unit for Young Life Scientists established. College of Medical Technology closed. International Innovation Organization reorganized and renamed Kyoto University Office of Society-Academia Collaboration for Innovation. International Innovation Center reorganized and renamed Innovative Collaboration Center. Institute for Integrated Cell-Material Sciences established.
2008	Wildlife Research Center established. Center for Archaeological Operations reorganized and renamed Center for Cultural Heritage Studies. Unit of Synergetic Studies for Space established. Education Unit for Global Leaders in Advanced Engineering and Pharmaceutical Sciences established.
2009	Young Researcher Development Center established.
2010	Center for the Promotion of Interdisciplinary Education and Research established. Center for iPS Cell Research and Application established. Innovative Collaboration Center closed (merged with Office of Society-Academia Collaboration for Innovation). Nano Medicine Merger Education Unit closed. Advanced Medical Engineering Research Unit closed. Career-Path Promotion Unit for Young Life Scientists closed. Micro/Nano Fabrication Hub in Kyoto Univ. established.
2011	Radioisotope Research Center closed (merged with Environment, Safety, and Health Organization). Environment Preservation Center closed (merged with Environment, Safety, and Health Organization). International Center closed (merged with Organization for the Promotion of International Relations). Center for Student Health closed (merged with Environment, Safety, and Health Organization). Institute of Sustainability Science closed. Kyoto University Pioneering Research Unit for Next Generation closed.



# ORGANIZATION CHART

(As of April 1, 2011)



\* Each of the (Executive) Vice-Presidents is in charge of a different area of university affairs.

\*\* 24 members, 12 of whom are Kyoto University faculty and staff.

\*\*\* Including the Organization for the Promotion of International Relations.



# STAFF AND STUDENTS

## UNIVERSITY STAFF (As of May 1, 2011)

Position	Number
President	1
Executive Directors	7
Auditors	2
Professors	1,037
Associate Professors	784
Senior Lecturers	164
Assistant Professors	883
Sub-Total	2,878
Non-teaching Staff	2,567
Specialist Staff	3
<b>Total</b>	<b>5,448</b>

## ENROLLMENT

(As of May 1 of each year)

Academic Year	Undergraduate	Graduate	Total
2011	13,537	9,282	<b>22,819</b>
2010	13,473	9,314	<b>22,787</b>
2009	13,417	9,319	<b>22,736</b>
2008	13,399	9,308	<b>22,707</b>

## NUMBER OF GRADUATES

Academic Year	Undergraduates	Graduates		Total
		Master's Course	Doctoral Course	
2010	2,842	2,188	688	<b>5,718</b>
2009	2,825	2,170	755	<b>5,750</b>
2008	2,866	2,143	783	<b>5,792</b>
2007	2,860	2,166	756	<b>5,782</b>

## NUMBER OF DEGREES CONFERRED

Academic Year	Master's Degree	Doctoral Degree
		New System
2010	2,188	776
2009	2,170	870
2008	2,143	910
2007	2,166	909

Note: Doctoral Degree, Old System (1897-1957) Total 9,651

## NUMBER OF PROFESSIONAL DEGREES CONFERRED

Academic Year	Graduates	
2010	Law School	202
	School of Public Health	28
	School of Government	50
	Graduate School of Management	66
2009	Law School	192
	School of Public Health	38
	School of Government	42
	Graduate School of Management	71
2008	Law School	187
	School of Public Health	32
	School of Government	41
	Graduate School of Management	54

# FINANCE

## Consolidated Revenues and Expenses in Net Assets

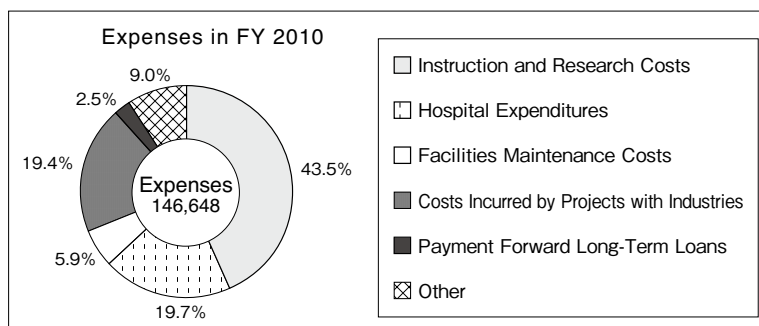
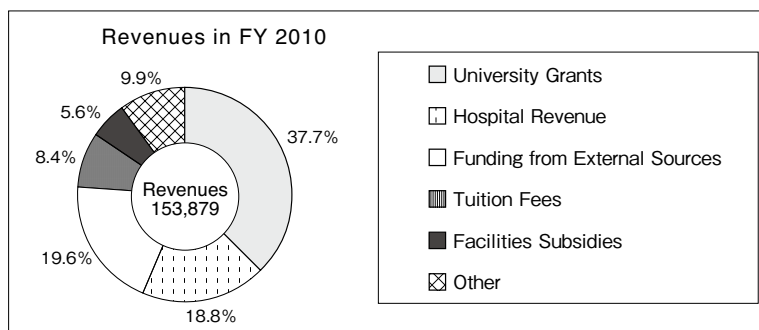
The following charts show Kyoto University's total revenues and expenses for the 2010 fiscal year. They also identify the major components of these revenues and expenses. Kyoto University has several revenue sources, the largest of which are university administration grants. The largest expense is the instruction and research. All other expenses are incurred in supporting instruction and research and in funding Kyoto University's public service activities.

### Revenues in FY 2010

	Unit: million yen	million US dollar*	
University Grants	58,000	746.46	37.7%
Hospital Revenue	28,946	372.54	18.8%
Funding from External Sources	30,211	388.82	19.6%
Tuition Fees	12,831	165.14	8.4%
Facilities Subsidies	8,633	111.11	5.6%
Other	15,258	196.37	9.9%
<b>Total</b>	<b>153,879</b>	<b>1980.42</b>	

### Expenses in FY 2010

	Unit: million yen	million US dollar*	
Instruction and Research costs	63,826	821.44	43.5%
Hospital Expenditures	28,777	370.36	19.7%
Facilities Maintenance Costs	8,633	111.11	5.9%
Costs Incurred by Projects with Industries	28,434	365.95	19.4%
Payment Forward Long-term Loans	3,725	47.94	2.5%
Other	13,253	170.57	9.0%
<b>Total</b>	<b>146,648</b>	<b>1887.36</b>	



# Balance Sheet

2010 Fiscal Year

Assets	Category	Unit: million yen	million US dollar*
	Fixed assets	411,979	5,302.18
	Land	166,578	2,143.86
	Buildings	205,597	2,646.04
	Accumulated depreciation	▲ 64,636	▲ 831.87
	Structures	15,407	198.29
	Accumulated depreciation	▲ 5,429	▲ 69.87
	Accumulated impairment loss	▲ 1	▲ 0.01
	Equipment & furnishings	110,633	1,423.85
	Accumulated depreciation	▲ 67,912	▲ 874.03
	Books	33,075	425.68
	Art & other valuables	751	9.67
	Construction in progress	2,252	28.98
	Patents	87	1.12
	Leaseholds	1,260	16.22
	Software	189	2.43
	Investment securities	8,613	110.85
	Long-term savings	4,600	59.20
	Other fixed assets	915	11.78
	Current assets	44,098	567.54
	Cash & bank savings	12,055	155.15
	Accounts receivable of student payments	277	3.56
	Reserve for uncollectable payments	▲ 78	▲ 1.00
	Accounts receivable of hospital revenue	6,108	78.61
	Reserve for uncollectable payments	▲ 462	▲ 5.95
	Accrued revenue	1,664	21.42
	Marketable securities	24,002	308.91
	Inventories	26	0.33
	Medicine & supplies	364	4.68
	Other current assets	142	1.83
	<b>Total assets</b>	<b>456,077</b>	<b>5,869.72</b>

\*US \$ 1 = ¥77.7 (Exchange rate for Nov. 2011)





Liabilities	Category	Unit: million yen	million US dollar*
	Fixed liabilities	108,211	1,392.68
	Contra accounts for services & assets	75,197	967.79
	Long-term Balance of donations	126	1.62
	Long-term loans payable to the Center for National University Finance and Management	16,123	207.50
	Long-term loans payable	2,755	35.46
	Long-term accrued amount payable	13,899	178.88
	Decommissioning liabilities	5	0.06
	Other fixed liabilities	106	1.36
	Current liabilities	56,169	722.90
	Grants for administrative services carry over	5,265	67.76
	Balance of donations	14,335	184.49
	Funds for research & other entrusted activities	4,607	59.29
	Current portion of loans payable to the Center for National University Finance and Management	2,568	33.05
	Current portion of long-term loans payable	413	5.32
	Accrued amount payable	23,174	298.25
	Decommissioning liabilities	4	0.05
	Other current liabilities	5,803	74.68
	<b>Total liabilities</b>	<b>164,380</b>	<b>2,115.57</b>

Net Assets	Category	Unit: million yen	million US dollar*
	Capital	244,526	3,147.05
	National government investments	244,526	3,147.05
	Capital surplus	20,290	261.13
	Capital surplus	81,447	1,048.22
	Accumulated depreciation charged to capital surplus	▲ 61,148	▲ 786.98
	Accumulated impairment loss charged to capital surplus	▲ 9	▲ 0.12
	Retained earnings	26,881	345.96
	Carried forward accumulated reserve	25,947	333.94
	Unappropriated retained earnings	934	12.02
	<b>Net assets</b>	<b>291,697</b>	<b>3,754.14</b>
	<b>Total liabilities &amp; net assets</b>	<b>456,077</b>	<b>5,869.72</b>

\*US \$ 1 = ¥77.7 (Exchange rate for Nov. 2011)

## Statement of Income 2010 Fiscal Year

Ordinary Expenses	Category	Unit: million yen	million US dollar*
	Operating expenses	132,374	1,703.66
	Education expenses	5,180	66.67
	Research expenses	22,149	285.06
	Expenses for medical practice	19,089	245.68
	Support for education & research	3,060	39.38
	Expenses for entrusted activities	21,349	274.76
	Personnel expenses	61,547	792.11
	Management costs	4,203	54.09
	Finance costs	1,162	14.95
	Miscellaneous losses	18	0.23
	<b>Total ordinary expenses</b>	<b>137,757</b>	<b>1,772.93</b>



Ordinary Revenues	Category	Unit: million yen    million US dollar*	
	Revenue from grants for administrative services	48,498	624.17
	Revenues from tuition and fees	13,686	176.14
	Hospital revenues	29,656	381.67
	Revenues from entrusted activities	20,519	264.08
	Revenues from donations	4,335	55.79
	Contra account for services & assets	7,828	100.75
	Other revenues	14,580	187.64
<b>Total ordinary revenues</b>		<b>139,102</b>	<b>1,790.24</b>

Ordinary profit	1,344	17.30
Extraordinary loss	482	6.20
Extraordinary income	20	0.26
Withdrawals from the accumulated reserve for education & research	52	0.67

<b>Total income for the year</b>	<b>934</b>	<b>12.02</b>
----------------------------------	------------	--------------

\*US \$ 1 = ¥77.7 (Exchange rate for Nov. 2011)

## UNIVERSITY FACILITIES

### Library Collection

As of March 31, 2011

	Number of Books			Number of Magazines and Periodicals		
	Japanese	International	Total	Japanese	International	Total
Main University Library	614,537	254,781	869,318	14,130	9,484	23,614
Other University Libraries and Reference Rooms	2,733,201	2,870,195	5,603,396	47,069	47,186	94,255
<b>Combined Total</b>	<b>3,347,738</b>	<b>3,124,976</b>	<b>6,472,714</b>	<b>61,199</b>	<b>56,670</b>	<b>117,869</b>

### Number of Visitors to the Kyoto University Museum

	Paying Visitors			Non-Paying Visitors	Total
	Individuals	Groups	Sub-total		
2006	17,224	3,748	20,972	17,251	38,223
2007	15,351	1,300	16,651	19,419	36,070
2008	14,487	662	15,149	22,029	37,178
2009	13,843	916	14,759	20,243	35,002
2010	20,840	1,030	21,870	30,358	52,228

### Number of Visitors to the Seto Marine Biological Laboratory Aquarium

	Individuals	Groups	Paying Visitors	Non-Paying Visitors	Total
2006	52,265	2,759	55,024	6,389	61,413
2007	56,725	2,316	59,041	6,722	65,763
2008	55,910	3,227	59,137	7,274	66,411
2009	52,483	2,621	55,104	7,581	62,685
2010	54,608	2,942	57,550	7,076	64,626

### Kyoto University Hospital

Statistics for 2010

Number of Beds	Number of Inpatients	Number of Outpatients
1,121	362,274	645,662



# INDUSTRY-ACADEMIA COLLABORATION

## Invention Disclosure

FY	Number of Invention Disclosure Forms Submitted
2004	524
2005	454
2006	392
2007	390
2008	405
2009	405
2010	396

Fiscal Year (FY): April 1-March 31

## Patent

FY	DOMESTIC		FOREIGN	
	Number of Patent Applications	Number of Patents Issued	Number of Patent Applications <sup>1</sup>	Number of Patents Issued <sup>2</sup>
2004	287 (149)	2 ( 0)	68 ( 33)	0 ( 0)
2005	316 (170)	14 ( 2)	218 (116)	0 ( 0)
2006	275 (184)	14 ( 7)	239 (130)	9 ( 6)
2007	185 (135)	20 ( 12)	240 (137)	9 ( 8)
2008	219 (154)	22 ( 10)	221 ( 99)	26 ( 18)
2009	231 (166)	45 ( 21)	224 (107)	37 ( 17)
2010	230 (169)	68 ( 38)	261 (150)	41 ( 25)
Total		216 ( 97)		131 ( 80)

Fiscal Year (FY): April 1 - March 31

The Number of joint applications or co-owned patents is shown in brackets

<sup>1</sup> Including patent applications under the PCT or EPC

<sup>2</sup> Of these, 306 are applications filed in accordance to the EPC ( 9 applications which could be applicable to 34 designated countries)

## Exploitation of Intellectual Property

FY	PATENTS		COPYRIGHTS <sup>1</sup>		RESEARCH MATERIALS		TOTAL
	Number of Licenses <sup>2</sup>	Revenue <sup>3</sup>	Number of Licenses <sup>2</sup>	Revenue <sup>3</sup>	Number of Licenses <sup>2</sup>	Revenue <sup>3</sup>	Revenue <sup>3</sup>
2004	0	0	4	5,380	1	12,329	17,709
2005	15	9,814	12	12,965	0	0	22,779
2006	19	17,002	7	6,453	1	10,500	33,955
2007	34	23,694	7	12,904	15	19,242	55,840
2008	47	48,424	7	6,812	38	47,217	102,453
2009	58	65,432	8	3,675	46	23,917	93,024
2010	59	154,575	6	2,182	28	15,865	172,622

Fiscal Year (FY): April 1-March 31

<sup>1</sup> Databases and computer programs or digital content (except research papers, books, or reports)

<sup>2</sup> Including assignment

<sup>3</sup> Unit/thousand yen

## Collaborative Research

FY	Number of Projects	Revenue <sup>1</sup>
2004	378	1,726,933
2005	504	2,174,118
2006	643	2,987,601
2007	766	3,469,663
2008	820	3,903,903
2009	813	5,613,524
2010	861	6,231,529

Fiscal Year (FY): April 1-March 31

<sup>1</sup>Unit/thousand yen

## Sponsored Research

FY	Number of Projects	Revenue <sup>1</sup>
2004	607	8,140,972
2005	664	9,282,207
2006	707	11,795,015
2007	698	10,903,624
2008	684	12,729,587
2009	728	14,137,356
2010	780	11,626,147

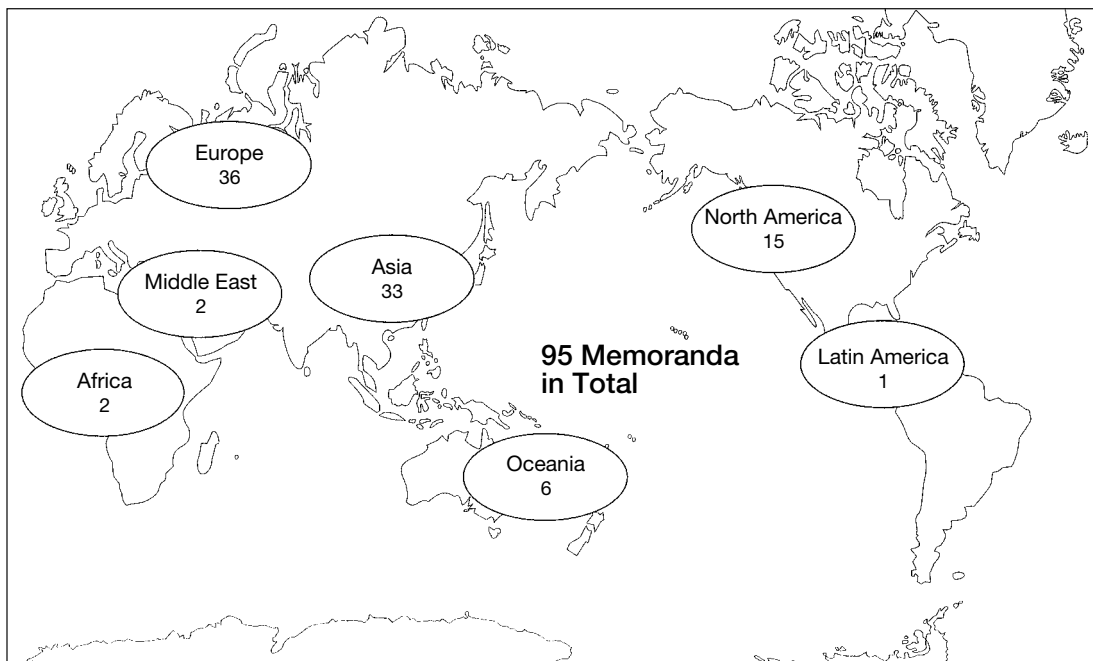
Fiscal Year (FY): April 1-March 31

<sup>1</sup>Unit/thousand yen



# ACADEMIC EXCHANGE MEMORANDA

## Distribution Map of Partner Universities and Consortia



Kyoto University has concluded general memoranda for academic exchange and cooperation with 91 universities, three university alliances, one national research academy as indicated below.

(As of December 31, 2011)

Country/Region	Universities	year of conclusion	☆
Australia	University of Queensland	1981	
	University of Melbourne	1997	☆
	University of New South Wales	1998	☆
	University of Sydney	1999	☆
	Australian National University	2008	☆
Austria	University of Vienna	1993	☆
Belgium	Universit catholique de Louvain	1997	☆
Canada	University of Tronto	1991	☆
	La Conference des Recteurs et des Principaux des Universites du Quebec	1994	☆
	University of Waterloo	2003	☆
China	Northwest University (西北大学)	1980	
	Wuhan University (武汉大学)	1980	☆
	Peking University (北京大学)	1983	☆
	Tsinghua University (清华大学)	1998	☆
	Fudan University (复旦大学)	2002	☆
	Zhejiang University (浙江大学)	2003	☆
	University of Science and Technology of China (中国科学技术大学)	2005	☆
	Hong Kong University of Science and Technology (香港科技大学)	2005	☆
	Nanjing University (南京大学)	2006	☆
	Shanghai Jiao Tong University (上海交通大学)	2008	☆
Xi'an Jiaotong University (西安交通大学)	2008	☆	



Country/Region	Universities	year of conclusion	☆
Czech	Charles University	1990	
Egypt	The Egyptian Academy of Science, Research and Technology	2011	
Finland	University of Helsinki	2011	☆
France	Université de Paris 7	1979	
	Union des Universités de Strasbourg	1996	☆
	Le Consortium des universités de Grenoble (Grenoble I - Université Joseph Fou-rier, Grenoble II - Université Pierre Mendès France, Grenoble III - Université Stendhal and Institut National Polytechnique de Grenoble)	2000	☆
	Ecole Normale Supérieure	2009	☆
Germany	Free University of Berlin	1984	☆
	Ludwig-Maximilians-University of Munich	1989	☆
	Rhenish Friedrich-Willhelm University of Bonn	1990	☆
	Rupert Charles University of Heidelberg	1990	☆
	Humboldt University Berlin	1998	☆
	Technische Universität München	2006	☆
	Georg-August-Universität Göttingen	2011	☆
Indonesia	Karlsruhe Institute of Technology	2011	☆
	Bandung Institute of Technology	2006	
	Indonesian Institute of Science (LIPI)	2006	
Israel	University of Indonesia	2008	
	Tel Aviv University	1999	☆
Italy	University of Siena	1989	
	University of Bologna	1995	
	University of Pisa	2001	
Korea	Kyungpook National University (慶北大学校)	1984	☆
	Seoul National University (ソウル大学校)	1991	☆
	Yonsei University (延世大学校)	1998	☆
	Korea University (高麗大学校)	2002	☆
	Korea Advanced Institute of Science and Technology (韓国科学技術院)	2005	
Laos	Pohang University of Science and Technology (浦項工科大学校)	2007	☆
	National University of Laos	2002	
Malaysia	University of Malaya	2008	
Mexico	University of Guadalajara	1983	☆
Netherlands	Leiden University	1997	☆
	University of Utrecht	1997	☆
New Zealand	University of Auckland	1997	☆
Russia	Moscow M.V. Lomonosov State University	1987	
Singapore	National University of Singapore	1999	☆
Sudan	University of Khartoum	2001	
Switzerland	Swiss Federal Institute of Technology Zurich	1989	
	University of Lausanne	1997	☆
Sweden	Stockholm University	1997	☆
	Uppsala University	1997	☆
	Royal Institute of Technology	2005	☆
Taiwan	National Taiwan University (国立台湾大学)	2005	☆
	Narional Tsing Hua University (国立清華大学)	2006	☆
Thailand	Kasetsart University	1984	☆
	Thammasat University	2005	☆
	Chulalongkorn University	2005	☆
Turkey	Koç University	2011	☆



Country/Region	Universities	year of conclusion	☆
U.K.	University of Sussex	1989	☆
	University of Oxford	1991	
	University of Cambridge	1997	
	University of Nottingham	1999	
	University of Edinburgh	2005	☆
	University of Sheffield	2006	☆
	University of Manchester	2006	☆
	University of Bristol	2011	
	Institute of Education, University of London	2011	
U. S. A.	Wayne State University	1985	
	Stanford University	1989	
	University of California	1990	☆
	University of California, Davis	2011	
	Polytechnic University	1990	
	Brown University	1992	
	George Washington University	1998	☆
	Tufts University	1998	
	University of Pennsylvania	1999	☆
	University of Hawai'i	2003	☆
	University of Michigan	2003	
University of Washington	2011	☆	
Vietnam	Vietnam National University, Hanoi	2007	
	Hue University	2007	
	Hanoi University of Technology	2009	
Others	United Nations University (国際連合大学)	2005	
	ASEAN University Network (AUN) (アセアン大学連合)	2009	

☆ General Memorandum and Student Exchange Agreement

Universities with Student Exchange Agreement Only:

University of Hong Kong (2007)

Chinese University of Hong Kong (2007)

Fondation Nationale des Sciences Politiques (Science Po) パリ政治学院 (2009)

University of Birmingham (2011)

University of Newcastle (2011)

☆ Individual faculties, graduate schools, institutes and centers of Kyoto University also have direct agreements with a broad range of institutions abroad. Details are available online.



# RESEARCHERS FROM ABROAD

(April 2010-March 2011)

Countries and Regions		Number of Researchers
ASIA	Bangladesh	22
	Bhutan	9
	Brunei	1
	Cambodia	5
	China	502
	India	76
	Indonesia	90
	Korea	297
	Laos	10
	Malaysia	47
	Myanmar	5
	Nepal	11
	Pakistan	5
	Philippines	25
	Singapore	26
	Sri Lanka	6
	Taiwan	161
	Thailand	95
Viet Nam	45	
NORTH AMERICA	Canada	56
	U.S.A	563
LATIN AMERICA	Argentina	2
	Brazil	5
	Chili	5
	Colombia	7
	Costa Rica	1
	Mexico	5
Peru	3	
EUROPE	Albania	1
	Austria	24
	Belgium	14
	Bulgaria	2
	Croatia	5
	Czech	16
	Denmark	9
	Estonia	3
	Finland	19
	France	202
	Germany	179
	Greece	13
	Hungary	16
	Iceland	3

Countries and Regions		Number of Researchers
EUROPE	Ireland	2
	Italy	74
	Lithuania	6
	Luxembourg	1
	Netherlands	48
	Norway	6
	Poland	19
	Portugal	6
	Romania	4
	Russia	38
	Slovakia	3
	Slovenia	3
	Spain	33
	Sweden	23
	Switzerland	40
	U.K.	169
	Ukraine	5
	Uzbekistan	2
OCEANIA	Australia	61
	New Zealand	15
MIDDLE EAST	Iran	10
	Israel	27
	Lebanon	1
	Oman	3
	Syria	1
	Turkey	10
AFRICA	United Arab Emirates	4
	Algeria	1
	Democratic Republic of the Congo	3
	Egypt	24
	Ethiopia	1
	Ghana	4
	Guinea	2
	Kenya	10
	Madagascar	1
	Senegal	1
	South Africa	2
	Sudan	1
	Tanzania	6
	Uganda	3
Total		3,264

The number of researchers from abroad doing research at Kyoto University, irrespective of their length of stay.



# RESEARCHERS GOING ABROAD

(April 2010-March 2011)

Country / Region		Number of Researchers
ASIA	Bangladesh	30
	Bhutan	30
	Brunei	3
	Cambodia	28
	China	902
	India	125
	Indonesia	251
	Korea	540
	Laos	74
	Malaysia	169
	Mongolia	10
	Myanmar	14
	Nepal	26
	Pakistan	3
	Philippines	60
	Singapore	141
	Sri Lanka	10
	Taiwan	306
	Thailand	353
Viet Nam	212	
NORTH AMERICA	Canada	203
	U.S.A	1,582
LATIN AMERICA	Argentina	13
	Barbados	1
	Bolivia	1
	Brazil	29
	Chili	15
	Costa Rica	1
	Ecuador	2
	Guatemala	1
	Jamaica	2
	Mexico	30
	Peru	23
Uruguay	1	
EUROPE	Armenia	2
	Austria	89
	Belarus	1
	Belgium	47
	Bulgaria	10
	Croatia	19
	Cyprus	1
	Czech	53
	Denmark	43
	Finland	31
	France	407
	Georgia	1
	Germany	367
	Greece	30
	Hungary	31
	Iceland	7
	Ireland	15
	Italy	192
	Kazakhstan	3
	Latvia	1
	Lithuania	2
	Malta	3
	Macedonia	2
Netherlands	96	

Country / Region		Number of Researchers
EUROPE	Norway	25
	Poland	49
	Portugal	49
	Romania	2
	Russia	30
	Serbia	3
	Slovakia	6
	Slovenia	6
	Spain	129
	Sweden	109
	Switzerland	127
	U.K.	292
	Ukraine	5
	Uzbekistan	5
OCEANIA	Australia	187
	Fiji	4
	Kiribati	1
	New Zealand	26
	Palau	1
	Papua New Guinea	2
	Vanuatu	2
MIDDLE EAST	Iran	2
	Israel	12
	Jordan	2
	Lebanon	2
	Qatar	2
	Saudi Arabia	4
	Syria	1
	Turkey	46
	United Arab Emirates	7
	AFRICA	Algeria
Botswana		9
Burkina Faso		1
Cameroon		20
Democratic Republic of the Congo		11
Egypt		20
Ethiopia		8
Gabon		5
Gambia		1
Ghana		8
Guinea		6
Kenya		22
Madagascar		3
Morocco		2
Namibia		11
Niger		17
Nigeria		1
Rwanda		2
Senegal		1
South Africa		28
Sudan		1
Tanzania		21
Tunisia		3
Uganda	10	
Zambia	9	
Others		2
Total		8,006

The number of researchers going abroad to do research, irrespective of their length of stay.





# STUDENTS FROM ABROAD

(As of May 1, 2011)

Country/Region	Classification	Under graduates	Graduates					Research Students etc*	Total
			Auditors	Master's Course	Doctoral Course	Professional Course	Auditors		
ASIA	Bangladesh			2	12			3	17
	Brunei				1				1
	Cambodia					4			4
	China	83	9	249	222	38	6	92	699
	East Timor							1	1
	India			3	13			6	22
	Indonesia	3		10	39			3	55
	Korea	55	5	48	111	10	4	20	253
	Laos				4				4
	Malaysia	1	1	7	23			2	34
	Mongolia	3		2	3	1		2	11
	Myanmar			2	3			2	7
	Nepal			2	9			2	13
	Pakistan			2	3				5
	Philippines		1	4	16			1	22
	Singapore	2			1				3
	Sri Lanka				3			1	4
	Taiwan		2	20	37	11	2	11	83
Thailand	7	2	8	36	1	1	5	60	
Viet Nam	2		8	30	4	2	2	48	
NORTH AMERICA	Canada		1	4	2		3	10	
	U.S.A.			5	11		3	19	
LATIN AMERICA	Argentina	1		2			1	4	
	Bolivia			1				1	
	Brazil	1		6	9			2	18
	Chile			1	1			4	6
	Colombia			1	1				2
	Dominican Republic			1					1
	Ecuador			1					1
	Guatemala			1					1
	Honduras			1					1
	Mexico				6		1		7
	Nicaragua			1					1
	Paraguay							1	1
	Peru			2	2			1	5
	Uruguay			1				1	2
Venezuela			1					1	
EUROPE	Azerbaijan			1				2	3
	Belarus	1						2	3
	Belgium		1	1	3		1	1	7
	Bulgaria			1	1			3	5
	Croatia				1			1	2
	Czech				1				1
	Estonia				1				1
	Finland				1			1	2
	France		2	2	8		1	1	14
	Georgia	1						1	2
	Germany		1	1	3		4	2	11
	Greece			1	1			1	3
	Hungary	1	1	2	1		1		6
	Italy				1				1
	Kazakhstan				1				1

\*Including research fellows

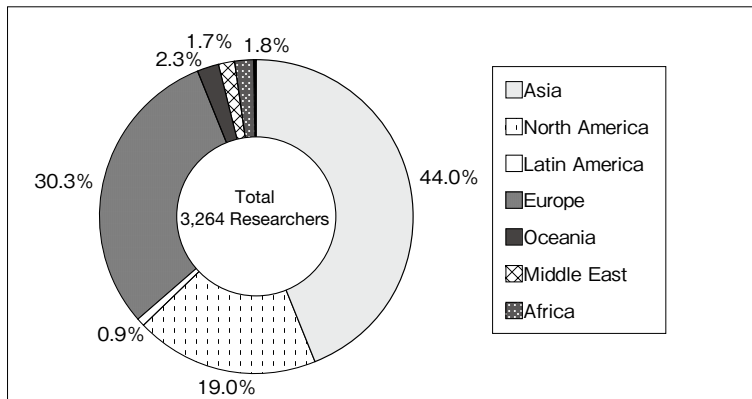


Country/Region	Classification	Under graduates	Auditors	Graduates				Research Students etc*	Total
				Master's Course	Doctoral Course	Professional Course	Auditors		
	Latvia				1				1
	Lithuania			1				1	2
	Luxembourg				1				1
	Macedonia				1				1
	Malta			1					1
	Netherlands			1	1		1	2	5
	Norway				1				1
	Poland			1	1				2
	Portugal							1	1
	Romania			2					2
	Russia			2	6			3	11
	Serbia			1					1
	Slovakia		1		1				2
	Spain				3		2		5
	Sweden		4					1	5
	Switzerland		1				3	1	5
	Ukraine				3			2	5
	U.K.		3	1	4			2	10
	Uzbekistan	1			1				2
OCEANIA	Australia		2	1	2			4	9
	New Zealand		2	3					5
MIDDLE EAST	Afghanistan			1	1				2
	Bahrain				1				1
	Iraq				1				1
	Iran			1	15			1	17
	Israel			1	1			2	4
	Jordan				1				1
	Kuwait				1				1
	Lebanon				1				1
	Oman							2	2
	Syria					2		2	4
	Turkey			1	1			2	4
	Yemen			1	1	1			3
AFRICA	Cameroon				1				1
	Congo, D.R.				3				3
	Cote d'Ivoire			1					1
	Egypt			1	11				12
	Ethiopia				4				4
	Ghana				1				1
	Kenya	2		1	3				6
	Libya				1				1
	Madagascar				1				1
	Malawi							1	1
	Mali				1				1
	Morocco				1				1
	Mozambique				1				1
	Nigeria			1	1				2
	Senegal		1						1
	South Africa				2			1	3
	Sudan				2				2
	Swaziland						1		1
	Tanzania			1	1				2
	Tunisia				3				3
Zambia			1	1				2	
Zimbabwe			1					1	
Total		164	40	429	717	67	29	212	1,658



# EXCHANGE OF RESEARCHERS AND STUDENTS

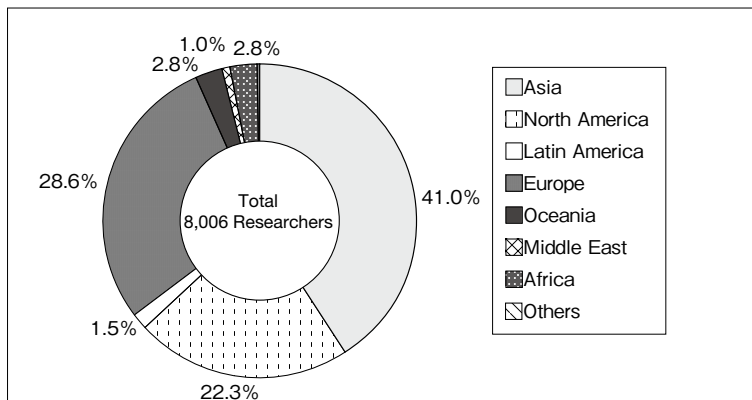
## Researchers from Abroad (April 2010-March 2011)



### Top 5 countries / regions

U.S.A.	562
China	502
Korea	297
France	202
Germany	178

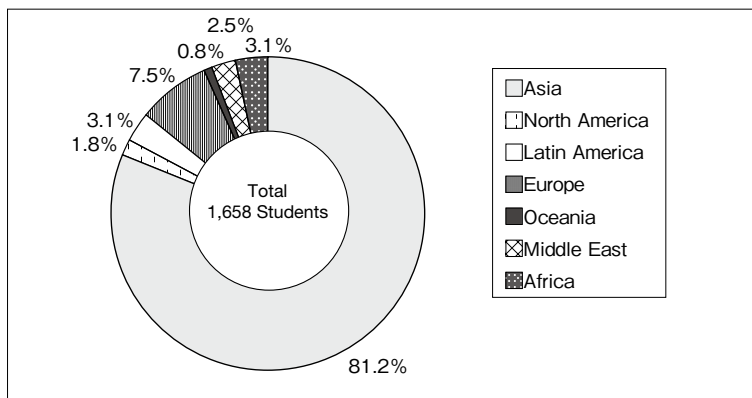
## Researchers Going Abroad (April 2010-March 2011)



### Top 5 countries / regions

U.S.A.	1,582
China	902
Korea	540
France	407
Germany	367

## Students from Abroad (As of May 1, 2011)



### Top 5 countries / regions

China	699
Korea	253
Taiwan	83
Thailand	60
Indonesia	55



# KYOTO UNIVERSITY INTERNATONAL SYMPOSIA

	Date	Place	Title	Remarks
1	Jan 13, 2001	Santa Clara, CA, USA	Network and Media Computing	
2	Nov 28, 2001 Nov 30, 2001	London, Edinburgh, UK	The Changes in the Japanese Economy Facing the New Century	Jointly organized with the University of London and the University of Edinburgh
3	Sept 3-4, 2002	Montreal, CANADA	Post-Petrofuels in the 21st Century-Prospects in the Future of Biomass Energy	
4	Dec 6-7, 2003	Ann Arbor, MI, USA	Self, Cognition, and Emotion	Jointly organized with the University of Michigan
5	Jan 27-29, 2005	SINGAPORE	Regulation of Cell Fate and Cell Function	Jointly organized with the National University of Singapore
6	Oct 8-9, 2005	Beijing, CHINA	Plant Sciences in Japan and China-from Genomics to Breeding	Jointly organized with Chinese Academy of Agricultural Sciences
7	Nov 23-24, 2005	Bangkok, THAILAND	Coexistence with Nature in a'Glocalizing'World-Field Science Perspectives	Jointly organized with Chulalongkorn University, Thammasat University and Kasetsart Unviersity
8	Nov 23-25, 2006	Bangkok, THAILAND	Towards Harmonious Coexistence within Human and Ecological Community on this Planet	
9	June 22-23, 2007	Kyoto, JAPAN	Intergrating Global Environmental Studies towards Human Security	
10	July 26-28, 2007	Bandung, INDONESIA	Active Geosphere Science	Jointly organized with Bandung Institute of Technology
11	Oct 9-11, 2008	Shanghai, CHINA	Frontier Bioscience in Modern Medicine	Special support from Fudan University
12	Dec 5-6, 2008	Kyoto, JAPAN	Transforming Racial Images: Analyses of Representations	
13	Dec 11-13, 2009	Kyoto, JAPAN	New Horizons of Academic Visual-Media Practices	
14	June 24, 2007	Xi'an, CHINA	High Resolution Digitization of Asian World Heritage	Special support from Xi'an Jiaotong University
15	Sept 19-20, 2010	Nagoya, JAPAN	Biodiversity, Zoos and Aquariums"The Message from Animals"	Jointly organized with Port of Nagoya Public Aquarium and Nagoya Higashiyama Zoo
16	Sept 7-9, 2011	Istanbul, TURKEY	Innovative and Sustainable Development	Jointly organized with the Koç University
17	Dec 15-16, 2011	Kyoto, JAPAN	1st AEARU Symposium on the Culture of Chinese Characters	Jointly organized with the AEARU (The Association of East Asian Research Universities)



# LIST OF OVERSEAS OFFICES AND FACILITIES

(As of October 1, 2011)

	Affiliation	Name	Location	Year Established
1	Graduate School of Economics	Kyoto University - Renmin University joint Research Center	Beijing, China	2008
2	Graduate School of Engineering	Cooperative Research and Education Center for Environmental Technology at Tsinghua University	Shenzhen, China	2005
3	Graduate School of Engineering	Global Center of Excellence Kyoto University-Institut Teknologi Bandung for GCOE Joint Research and Education Center	Bandung, Indonesia	2008
4	Graduate School of Engineering	Joint Education and Research Centre on AIT Campus under the Global Centre of Excellence, Kyoto University	Pathumthani, Thailand	2008
5	Graduate School of Engineering	Global Center of Excellence Kyoto University-the Municipal Corporation of Greater Mumbai (MCGM) for GCOE Joint Research and Education Center	Mumbai, India	2009
6	Graduate School of Engineering	Global Centre of Excellence Kyoto University-Centre for Maritime Studies National University of Singapore Transport Logistics Joint Research Centre	Singapore, Singapore	2008
7	Graduate School of Engineering	Kyoto University-University of Malaya Overseas Base in Malaysia for Education and Research	Kuala Lumpur, Malaysia	2010
8	Graduate School of Science	Satellite Office at Chulalongkorn University	Bangkok, Thailand	2003
9	Graduate School of Science	Research Base for biodiversity of African Tropical Forest	Libreville, Gabon	2009
10	Graduate School of Science/ Research Institute for Sustainable Humanosphere	Satellite Office at Institut Teknologi Bandung	Bandung, Indonesia	2003
11	Graduate School of Science, Observatories	CHAIN Peru Station	Ica, Lima, Peru	2010
12	Graduate School of Agriculture	Khon Kean Research Office of the Graduate School of Agriculture, Kyoto University	Khon Kean, Thailand	1996
13	Graduate School of Agriculture	Japanese Research-Team Laboratory, Kinabalu Park Headquarters	Kota Kinabalu, Malaysia	1995
14	Graduate School of Agriculture	Japanese Research-Team Laboratory, Deramakot Forest Reserve	Sandakan, Malaysia	2003
15	Graduate School of Asian and African Area Studies	Ethiopia Field Station	Addis Ababa, Ethiopia	2003
16	Graduate School of Asian and African Area Studies	Cameroon Field Station	Ndongo Village, Cameroon	2003
17	Graduate School of Asian and African Area Studies	Nairobi Field Station	Nairobi, Kenya	2003
18	Graduate School of Asian and African Area Studies	Zambia Field Station	Lusaka, Zambia	2003
19	Graduate School of Asian and African Area Studies	Tanzania Field Station	Dar es Salaam, Tanzania	2003
20	Graduate School of Asian and African Area Studies	Namibia Field Station	Windhoek, Namibia	2008



	Affiliation	Name	Location	Year Established
21	Graduate School of Asian and African Area Studies/Center for Southeast Asian Studies	Laos Field Station	Vientiane, Laos	2002
22	Graduate School of Asian and African Area Studies/Center for Southeast Asian Studies	Makassar Field Station	Makassar, Indonesia	2003
23	Graduate School of Asian and African Area Studies/Center for Southeast Asian Studies	Cambodia Field Station	Phnom Penh, Cambodia	2010
24	Graduate School of Asian and African Area Studies/Center for Southeast Asian Studies	Indonesia Pekanbaru Field Station	Pekanbaru, Indonesia	2010
25	Graduate School of Asian and African Area Studies/Center for Southeast Asian Studies	Myanmar Field Station	Yangon, Myanmar	2003
26	Graduate School of Global Environmental Studies	Contact Office of Research and Education of Graduate School of Global Environmental Studies	Hue, Vietnam	2006
27	Graduate School of Global Environmental Studies/Graduate School of Engineering	Hanoi Office	Hanoi, Vietnam	2008
28	Graduate School of Global Environmental Studies	Hue Office	Hue, Vietnam	2008
29	Graduate School of Global Environmental Studies	Shenzhen Office	Shenzhen, China	2008
30	Institute of Advanced Energy	Thai Research Station Collaborative Research Laboratory	Pathumthani, Thailand	2003
31	Research Institute for Sustainable Humanosphere	Equatorial Atmosphere Radar	Bukittinggi, Indonesia	2001
32	Research Institute for Sustainable Humanosphere	RISH-RDUB Satellite Office	Bogor, Indonesia	2004
33	Research Institute for Sustainable Humanosphere	MHP Acacia Research Office	Muaraenim, Indonesia	2005
34	Disaster Prevention Research Institute	Seattle Satellite Office	Seattle, USA	1996
35	Primate Research Institute	Research Project on bonobos in the Luo Reserve	Djolu, Congo	1973
36	Primate Research Institute	Bossou-Nimba Research Station	Bossou, Guinea	1976
37	Primate Research Institute	Kaliinzu Forest Research Project by the Primate Research Institute	Bushenyi, Uganda	1997
38	Center for Southeast Asian Studies	Bangkok Liaison Office	Bangkok, Thailand	1963
39	Center for Southeast Asian Studies	Jakarta Liaison Office	Jakarta, Indonesia	1970
40	Office of Society-Academia Collaboration for Innovation	Kyoto University Liaison Office at Tsinghua University	Beijing, China	2006
41	Office of Society-Academia Collaboration for Innovation	Euro Representative of Kyoto University SACI	London, U.K.	2009
42	Center for Ecological Research	Field Station for Tropical Forest and Biodiversity Studies	Miri, Malaysia	1991
43	Center for Integrated Area Studies	CIAS Lima Office	Lima, Peru	2006
44	Wildlife Research Center	Kyoto University African Ape Expedition	Kigoma, Tanzania	1965
45	Wildlife Research Center	African Anthropological and Biological Field Research Center	Arusha, Tanzania	2006
46	Wildlife Research Center	Kuala Sungai Danum Research Station	Danum Valley, Malaysia	2009
47	Institute for Integrated Cell-Material Sciences	iCeMS Satellite at NCBS-inStem	Bangalore, India	2011
48	Organization for the Promotion of International Relations(OPIR)	Vietnam National University, Hanoi - Kyoto University Collaboration Office	Hanoi, Vietnam	2010



# KYOTO UNIVERSITY

## CONTACT

### **For Researchers**

#### **International Affairs Division**

Yoshida-Honmachi, Sakyo-ku, Kyoto 606-8501

Tel: +81-75-753-2047

Fax: +81-75-753-2042

E-mail: [koryu52@mail.adm.kyoto-u.ac.jp](mailto:koryu52@mail.adm.kyoto-u.ac.jp)

URL: <http://www.kyoto-u.ac.jp>

### **For Students**

#### **Foreign Student Division**

Yoshida-Honmachi, Sakyo-ku, Kyoto 606-8501

Tel: +81-75-753-2543

Fax: +81-75-753-2562

E-mail: [ryugak78@mail.adm.kyoto-u.ac.jp](mailto:ryugak78@mail.adm.kyoto-u.ac.jp)

URL: <http://www.kyoto-u.ac.jp>

# KYOTO UNIVERSITY

FACTS AND FIGURES

2012



## CONTENTS

Chronological Table	1
Organization Chart	4
Staff and Students	5
Finance	6
University Facilities	9
Industry-Academia Collaboration	10
Academic Exchange Memoranda	11
Researchers from Abroad	14
Researchers going Abroad	15
Students from Abroad	16
Exchange of Researchers and Students	18
Kyoto University International Symposia	19
List of Overseas Offices and Facilities	20