

# KYOTO UNIVERSITY

Facts and Figures 2020–2021

---



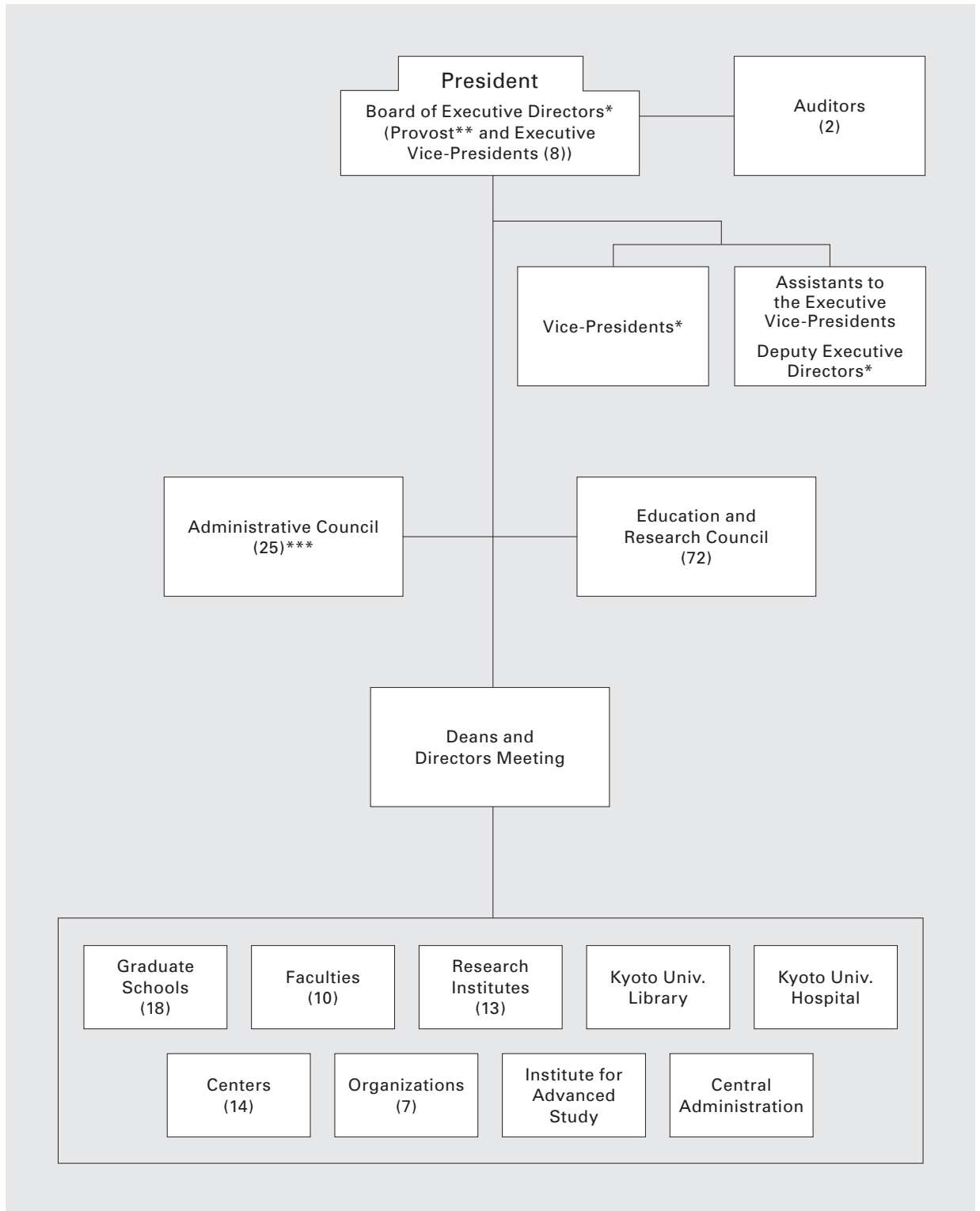
京都大学

# Contents

Organizational Structure	1
Staff and Students	2
Finance	3
Industry-Academia Collaboration	4
University Facilities	6
Academic Exchange Memoranda	7
Double/Joint Degrees	11
On-site Laboratory	12
Overseas Offices and Facilities	14
Researchers from Abroad	16
Researchers going Abroad	17
Students from Abroad	18
Students going Abroad	20

# Organizational Structure

(As of Apr. 1, 2020)



\* Each of the (executive) vice-presidents and deputy executive directors is in charge of a different area of university affairs.

\*\* One executive vice-president concurrently serves as provost.

\*\*\* 25 members, 12 of whom are Kyoto University faculty and staff.

# Staff and Students

## University Faculty and Staff

(As of May 1, 2020)

Position	Number				Total	
	Permanent		Fixed term			
President	1	-	-	-	1	-
Executive Directors	8	-	-	-	8	-
Auditors	2	-	-	-	2	-
Professors	968	(24)	97	(31)	1,065	(55)
Associate Professors	786	(60)	176	(31)	962	(91)
Senior Lecturers	176	(33)	93	(20)	269	(53)
Assistant Professors	753	(31)	416	(42)	1,169	(73)
Research Associates	2	-	-	-	2	-
Researchers(Non-teaching)	-	-	440	-	440	-
Non-teaching Staff	2,823	(9)	619	(131)	3,442	(140)
Specialist Staff	8	-	66	-	74	-
<b>Total</b>	<b>5,527</b>	<b>(157)</b>	<b>1,907</b>	<b>(255)</b>	<b>7,434</b>	<b>(412)</b>

Number of international faculty and staff shown in parenthesis

## Enrollment

(As of May 1 of each year)

Year	Undergraduate	Graduate	Total
2020	13,053	9,543	22,596
2019	13,094	9,535	22,629
2018	13,227	9,427	22,654
2017	13,360	9,338	22,698
2016	13,511	9,351	22,862

## Number of Graduates

Academic year (Apr. 1–Mar. 31)	Undergraduate	Graduate		Total
		Master's course	Doctoral course	
2019	2,832	2,387	681	5,900
2018	2,941	2,288	701	5,930
2017	2,929	2,275	699	5,903
2016	2,963	2,250	665	5,878
2015	2,931	2,149	718	5,798

## Number of Degrees Conferred

Academic year (Apr. 1–Mar. 31)	Master's degree	Doctoral degree
2019	2,387	777
2018	2,288	772
2017	2,275	777
2016	2,250	745
2015	2,149	803

## Number of Professional Degrees Conferred

Academic year (Apr. 1–Mar. 31)	Law school	School of public health	School of government	School of management	Total
2019	136	40	37	89	302
2018	133	26	42	81	282
2017	129	34	45	78	286
2016	133	37	35	78	283
2015	139	34	36	86	295

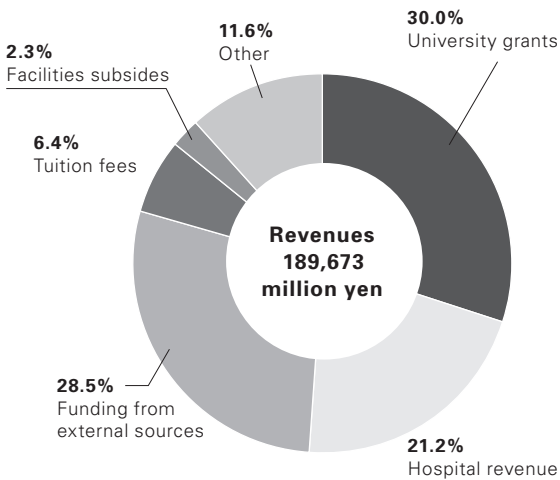
# Finance

## Financial Statement

\*Calculations based on the exchange rate as of Mar. 30, 2020 (US\$1=¥ 106.68)

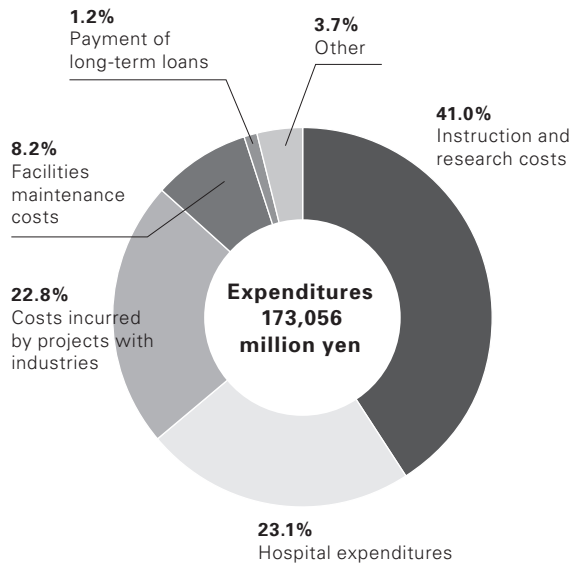
### Revenues in Academic Year 2019 (Apr. 1–Mar. 31)

Category	Million yen	Million US\$
University grants	56,837	532.78
Facilities subsidies	4,349	40.77
Tuition fees	12,126	113.67
Hospital revenue	40,256	377.35
Funding from external sources	54,120	507.31
Other	21,985	206.08
<b>Total</b>	<b>189,673</b>	<b>1777.96</b>



### Expenditures in Academic Year 2019 (Apr. 1–Mar. 31)

Category	Million yen	Million US\$
Instruction and research costs	70,843	664.07
Hospital expenditures	40,026	375.20
Facilities maintenance costs	14,184	132.96
Costs incurred by projects with industry	39,557	370.80
Payment of long-term loans	2,000	18.75
Other	6,446	60.42
<b>Total</b>	<b>173,056</b>	<b>1622.20</b>



# Industry-Academia Collaboration

## Invention Disclosure

Academic year (Apr. 1- Mar. 31)	Number of invention disclosure reports submitted
2019	411
2018	382
2017	361
2016	370
2015	439
2014	412
2013	393
2012	443

## Patent Application and Acquisition

Academic year (Apr. 1-Mar. 31)	Domestic		Foreign	
	Number of patent applications	Number of patents issued	Number of patent applications <sup>1</sup>	Number of patents issued <sup>2</sup>
2019	304 (213)	171 (132)	390 (238)	260 (166)
2018	257 (181)	148 (107)	373 (233)	302 (157)
2017	230 (148)	137 (104)	380 (254)	277 (172)
2016	286 (201)	188 (142)	398 (290)	258 (170)
2015	315 (227)	161 (120)	360 (260)	184 (126)
2014	313 (222)	161 (127)	340 (229)	179 (113)
2013	290 (202)	156 (108)	331 (215)	101 (63)
2012	273 (187)	132 (98)	313 (192)	75 (43)
2011	237 (174)	109 (80)	298 (196)	79 (23)

Number of joint applications or co-owned patents shown in parenthesis

<sup>1</sup> Applications under the Patent Cooperation Treaty etc. count as one, regardless of the number of designated countries

<sup>2</sup> Patents issued in multiple countries are counted once per country

## Current Number of Patents

(As of Mar. 31, 2020)

Domestic	Foreign
1,289 (914)	1,511 (946)

Number of joint applications or co-owned patents shown in parenthesis

## Utilization of Intellectual Property

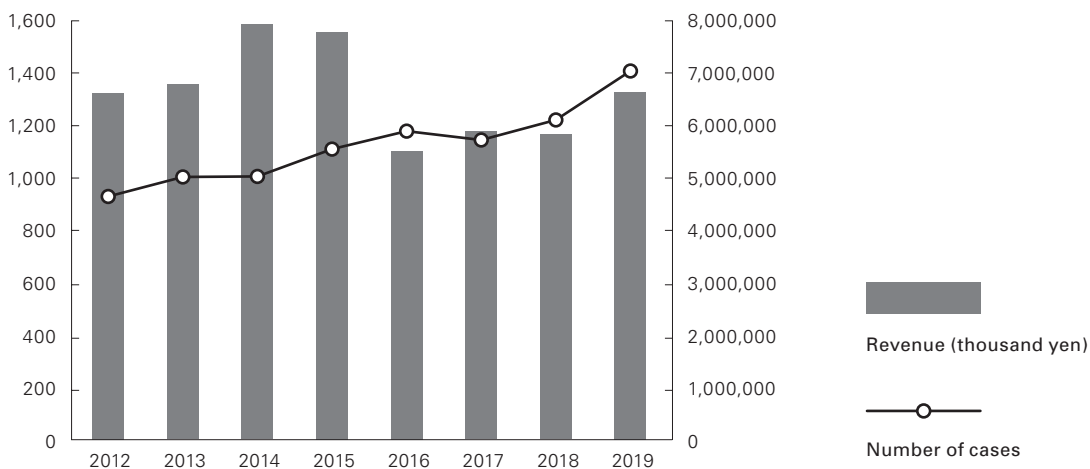
Academic year (Apr. 1-Mar. 31)	Patents		Copyrights <sup>1</sup>		Research materials		Total
	Number of licenses <sup>2</sup>	Revenue (thousand yen)	Number of licenses	Revenue (thousand yen)	Number of licenses	Revenue (thousand yen)	Revenue (thousand yen)
2019	218	678,293	15	2,216	71	39,560	<b>720,069</b>
2018	177	617,343	10	5,256	75	95,347	<b>717,946</b>
2017	179	640,395	11	2,639	69	60,862	<b>703,896</b>
2016	159	460,036	11	3,120	67	80,347	<b>543,503</b>
2015	144	371,154	11	2,780	53	14,768	<b>388,702</b>
2014	158	357,570	25	8,599	57	16,157	<b>382,326</b>
2013	139	310,530	22	4,515	56	11,901	<b>326,946</b>
2012	115	191,144	16	9,965	32	53,217	<b>254,326</b>
2011	101	184,594	14	4,172	25	18,801	<b>207,567</b>

<sup>1</sup> Databases and computer programs or digital content (except research papers, books, or reports)

<sup>2</sup> Including applications pending

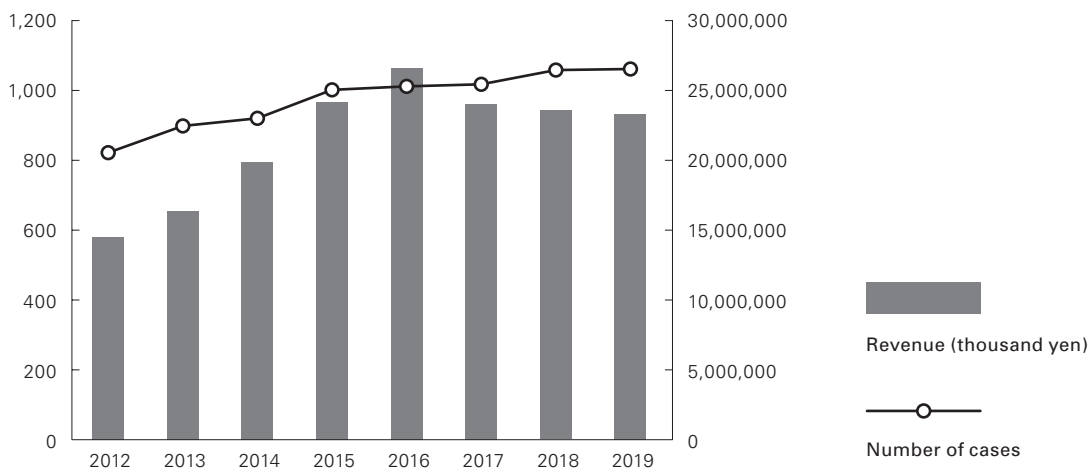
## Collaborative Research

Academic year (Apr. 1- Mar. 31)	Number of cases	Revenue (thousand yen)
2019	1,415	6,678,149
2018	1,227	5,857,873
2017	1,150	5,910,914
2016	1,184	5,540,024
2015	1,115	7,831,464
2014	1,010	7,966,350
2013	1,008	6,817,133
2012	933	6,649,823



## Sponsored Research

Academic year (Apr. 1- Mar. 31)	Number of cases	Revenue (thousand yen)
2019	1,067	23,451,728
2018	1,064	23,695,518
2017	1,023	24,167,273
2016	1,017	26,770,423
2015	1,007	24,296,814
2014	925	19,979,788
2013	903	16,465,535
2012	826	14,574,873



# University Facilities

## Library Collection

(As of Mar. 31, 2020)

	Number of books			Number of magazines and periodicals		
	Japanese	International	Total	Japanese	International	Total
Main university library	738,053	286,411	<b>1,024,464</b>	14,485	9,858	<b>24,343</b>
Other university libraries and reference rooms	3,077,824	3,085,953	<b>6,163,777</b>	52,268	49,459	<b>101,727</b>
<b>Combined total</b>	<b>3,815,877</b>	<b>3,372,364</b>	<b>7,188,241</b>	<b>66,753</b>	<b>59,317</b>	<b>126,070</b>

## Kyoto University Hospital

Academic year 2019 (Apr. 1 - Mar. 31)

Number of beds	Number of inpatients	Number of outpatients
1,141	337,296	682,800

## Number of Visitors to the Kyoto University Museum

Academic year 2019 (Apr. 1 - Mar. 31)

Paying visitors			Non-paying visitors	Total
Individuals	Groups	Total		
12,085	929	13,014	27,529	<b>40,543</b>

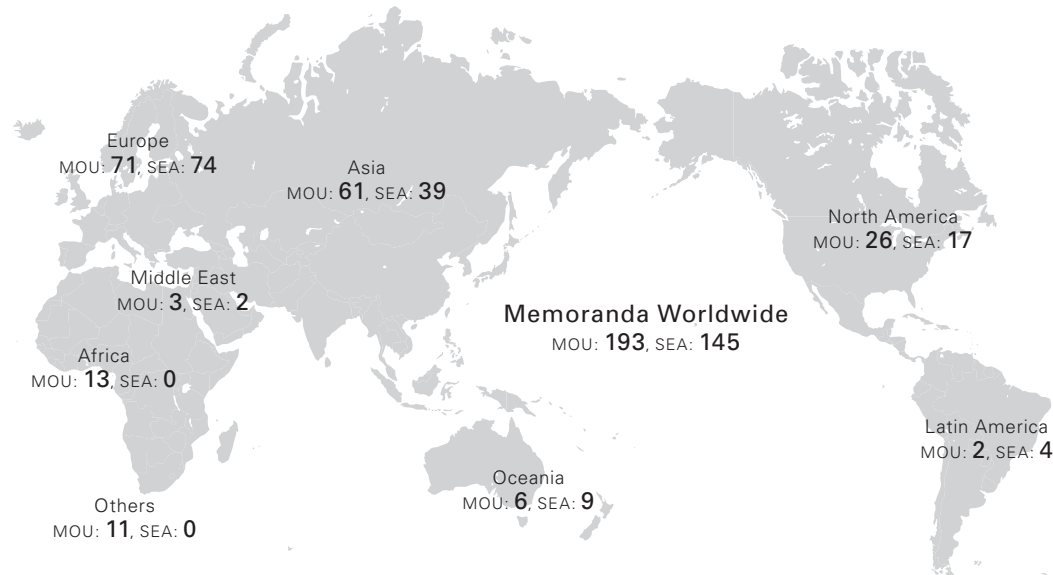
## Number of Visitors to the Seto Marine Biological Laboratory Aquarium

Academic year 2019 (Apr. 1 - Mar. 31)

Paying visitors			Non-paying visitors	Total
Individuals	Groups	Total		
82,615	1,834	84,449	2,831	<b>87,280</b>



# Academic Exchange Memoranda



MOU: Memorandum of Understanding / SEA: Student Exchange Agreement

(As of May 1, 2020)

Country/Region	Institution	MOU Year of conclusion	SEA Year of conclusion
<b>ASIA</b>			
<b>Bhutan</b>	Royal University of Bhutan	2013	-
<b>Brunei</b>	Universiti Brunei Darussalam	2014	2015
	Northwest University	1980	-
<b>China</b>	Wuhan University	1980	2007
	Peking University	1983	2008
	Tsinghua University	1998	2007
	Fudan University	2002	2007
	Zhejiang University	2003	2008
	University of Science and Technology of China	2005	-
	Hong Kong University of Science and Technology	2005	2006
	Nanjing University	2006	2007
	University of Hong Kong	-	2007
	Chinese University of Hong Kong	-	2007
	Shanghai Jiao Tong University	2008	2008
	Xi'an Jiaotong University	2008	2010
	Nankai University	-	2014
	Hong Kong Polytechnic University	-	2017
<b>India</b>	Banaras Hindu University	2015	2015
	Indian Institute of Technology Bombay (IITB)	2015	-
	Indian Institute of Technology Guwahati (IITG)	2016	2016
	Indian Institute of Technology Kanpur (IITK)	2016	-
	Indian Institute of Science	2017	-
<b>Indonesia</b>	North-Eastern Hill University	2018	-
	Institut Teknologi Bandung	2006	2016
	University of Indonesia	2008	2015
	Gadjah Mada University	2012	2016
	IPB University (formerly Bogor Agricultural University)	2013	-
	Hasanuddin University	2014	-
	Indonesian Institute of Sciences (LIPI)	2014	-
Agency of Peatland Restoration (Badan Restorasi Gambut)	2016	-	
<b>Laos</b>	University of Riau	2020	-
	National University of Laos	2002	-
<b>Malaysia</b>	University of Malaya	2008	2015
	Universiti Teknologi Malaysia	2016	2017
	Universiti Kebangsaan Malaysia	2017	-
<b>Myanmar</b>	Mandalay Technological University	2013	-
	Yangon Technological University	2013	-
	University of Yangon	2015	-
	Yezin Agricultural University	2017	-

Country/Region	Institution	MOU Year of conclusion	SEA Year of conclusion
Nepal	Tribhuvan University	2015	-
	Kyungpook National University	1980	1996
Korea	Seoul National University	1991	1997
	Yonsei University	1998	1999
	Korea University	2002	2006
	Korea Advanced Institute of Science and Technology (KAIST)	2005	2017
	Pohang University of Science and Technology (POSTEC)	2007	2007
	Konkuk University	2012	-
Philippines	University of the Philippines	2015	2015
Singapore	National University of Singapore	1999	1999
	Nanyang Technological University	2013	2014
Taiwan	National Taiwan University	2005	2005
	National Tsing Hua University	2006	2007
	National Cheng Kung University	2019	-
	Academia Sinica	2019	-
Thailand	Kasetsart University	1984	2001
	Chulalongkorn University	2005	2006
	Thammasat University	2005	2006
	Mahidol University	2014	-
	Chiang Mai University	2014	2014
	Asian Institute of Technology	2017	-
	National Science and Technology Development Agency	2018	-
Viet Nam	Vietnam National University, Hanoi	2007	2012
	Hue University	2007	2016
	Hanoi University of Science and Technology	2009	-
	University of Danang	2014	2016
<b>OCEANIA</b>			
Australia	University of Queensland	1981	2012
	University of Melbourne	1997	1997
	University of New South Wales	1998	1998
	University of Sydney	1999	1999
	Australian National University	2008	2008
	University of Adelaide	-	2018
New Zealand	Charles Darwin University	-	2020
	University of Auckland	1997	1997
	University of Otago	-	2016
<b>NORTH AMERICA</b>			
Canada	University of Toronto	1991	1997
	La Conference des Recteurs et des Principaux des Universites du Quebec	1994	1998
	University of Waterloo	2003	2006
	McGill University	2014	2014
	University of British Columbia	2014	2015
	Concordia University	2014	2014
	Simon Fraser University	-	2020
United States of America	Wayne State University	1985	-
	Stanford University	1989	-
	University of California	1990	-
	New York University Tandon School of Engineering	1990	-
	Brown University	1992	-
	George Washington University	1998	2020
	Tufts University	1998	-
	University of Illinois at Urbana-Champaign	1999	-
	University of Pennsylvania	1999	-
	University of Hawai'i	2003	2005
	University of Michigan	2003	-
	University of Washington	2011	2011
	University of California, Davis	2011	-
	University of Wisconsin-Madison	-	2013
	University of California, San Diego	2014	2020
	Olin College of Engineering	2014	-
	University of Notre Dame (Du Lac)	2014	2016
	Massachusetts Institute of Technology	2015	-
	University of California, Berkeley	2015	-
	University of Texas at Austin	-	2015
Rice University	2017	-	
University of Rochester	-	2018	
Arizona State University	-	2018	
University of California, Santa Cruz	-	2019	
University of Florida	2019	-	

Country/Region	Institution	MOU Year of conclusion	SEA Year of conclusion
<b>LATIN AMERICA</b>			
Brazil	University of São Paulo	2014	2014
Mexico	University of Guadalajara	1983	2006
	Instituto Tecnológico y de Estudios Superiores de Monterrey	-	2018
Chile	University of Chile	-	2019
<b>EUROPE</b>			
Austria	University of Vienna	1993	1997
Belgium	Université Catholique de Louvain	1997	2003
	KU Leuven	-	2020
Czech Republic	Charles University	1990	-
Finland	University of Helsinki	2011	2011
	Aalto University	-	2020
France	Université de Paris 7	1979	2015
	Université de Strasbourg	1991	2000
	Le Consortium des Universités de Grenoble	2000	2000
	École Normale Supérieure	2009	2009
	Institut d'Etudes Politiques de Paris (Sciences Po)	-	2009
	Centre National de la Recherche Scientifique	2013	-
	Université de Bordeaux	2014	2015
	Agropolis International	2014	-
	École des Hautes Études en Sciences Sociales (EHESS)	2015	-
	Institut National des Langues et Civilisations Orientales (INALCO)	2016	2016
	MINES ParisTech	2016	2016
	École normale supérieure Paris-Saclay	2017	-
	Université Paris-Saclay	2018	-
	École Polytechnique	-	2019
Germany	Freie Universität Berlin	1984	1997
	University of Munich	1989	1998
	University of Bonn	1990	1998
	Heidelberg University	1990	1997
	Humboldt University of Berlin	1998	1999
	Technical University of Munich	2006	2007
	Georg-August-Universität Göttingen	2011	2011
	Karlsruhe Institute of Technology	2011	2011
	University of Cologne	2013	2017
	RWTH Aachen University	2014	2014
	Technical University of Berlin	2016	2016
	Universität Hamburg	2017	2017
	TU Dresden	2018	2018
	TU Dortmund University	2019	2020
Hungary	University of Stuttgart	-	2020
	Universität Westfälische Wilhelms Münster	-	2020
Hungary	Eötvös Loránd University	-	2018
Iceland	University of Iceland	-	2016
Ireland	University College Dublin, UCD National University of Ireland	2014	2014
	University of Dublin, Trinity College Dublin	2014	2014
Italy	University of Siena	1989	-
	University of Bologna	1995	-
	Politecnico di Milano	2014	2014
	Ca' Foscari University of Venice	2015	2015
Luxembourg	University of Luxembourg	2016	2016
Netherlands	Leiden University	1997	1997
	Utrecht University	1997	1997
	University of Groningen	2013	2014
	Wageningen University and Research	2018	-
	Erasmus University Rotterdam	-	2019
Norway	Maastricht University	-	2020
	Norwegian University of Science and Technology	2014	2014
Norway	University of Oslo	-	2018
Poland	Jagiellonian University	2013	2017
Russia	Lomonosov Moscow State University	1987	-
	Saint-Petersburg State University	2013	2018
Spain	Universidad de Barcelona	2014	2014
	Universitat Autònoma de Barcelona	2017	2017
	Universidad Autònoma de Madrid	-	2019
	University of Navarra	-	2020

Country/Region	Institution	MOU Year of conclusion	SEA Year of conclusion
Sweden	Uppsala University	1997	1997
	Stockholm University	1997	1997
	Royal Institute of Technology (KTH)	2005	2005
	Lund University	2014	-
	Chalmers Tekniska Hogskola AB	-	2018
Switzerland	Swiss Federal Institute of Technology (ETH Zurich)	1989	-
	University of Lausanne	1997	1999
	University of Zurich	2013	2014
	Ecole Polytechnique Fédérale de Lausanne (EPFL)	2015	2015
	University of Bern	-	2018
Ukraine	National Technical University of Ukraine *Kyiv Polytechnic Institute*	2013	-
	Taras Shevchenko National University of Kyiv	2014	-
United Kingdom	University of Sussex	1989	2016
	University of Oxford	1991	-
	University of Cambridge	1997	-
	University of Nottingham	1999	2018
	University of Edinburgh	2005	2011
	University of Sheffield	2006	2006
	University of Manchester	2006	2007
	University of Bristol	2011	2012
	Institute of Education University of London	2011	-
	Newcastle University	-	2011
	University of Glasgow	2013	2016
	King's College London (KCL)	2014	2014
	University of Birmingham	2015	2011
	University of Leeds	2016	2016
	University of Southampton	2017	2012
	University of Durham	-	2018
	University of Exeter	-	2018
University of Warwick	-	2018	
Queen Mary University of London	-	2019	
<b>MIDDLE EAST</b>			
Israel	Tel Aviv University	1999	2006
Saudi Arabia	King Abdulaziz University (KAU)	2014	-
Turkey	Koç University	2011	2011
<b>AFRICA</b>			
Botswana	University of Botswana	2012	-
Democratic Republic of the Congo	University of Kinshasa	2015	-
Egypt	Egyptian Academy of Science, Research and Technology	2010	-
	Egypt-Japan University of Science and Technology (E-JUST)	2012	-
Ethiopia	Addis Ababa University	2017	-
Ghana	University of Ghana	2017	-
Guinea	University of Conakry	2013	-
Madagascar	University of Antananarivo	2019	-
Morocco	Mohammed V University of Rabat	2016	-
Sudan	University of Khartoum	2001	-
Tanzania	Sokoine University of Agriculture	2019	-
Uganda	Makerere University	2015	-
Zambia	University of Zambia	2019	-
<b>OTHERS</b>			
	ASEAN University Network (AUN)	2009	-
	ASEAN+3 University Network (ASEAN+3 UNet)	2012	-
	Center for International Forestry Research (CIFOR)	2016	-
	Food and Agriculture Organization of the United Nations (FAO)	2016	-
	ITER International Fusion Energy Organization	2014	-
	Japan International Cooperation Agency	2010	-
	Organisation for Economic Co-operation and Development	2019	-
	United Nations Development Programme (UNDP)	2016	-
	United Nations Educational, Scientific and Cultural Organization (UNESCO)	2012	-
	United Nations Educational, Scientific and Cultural Organization (UNESCO) UNESCO Chairs Programme	2018	-
	United Nations University	2005	-
<b>Total</b>		<b>193</b>	<b>145</b>

Many of Kyoto University's individual faculties, graduate schools, institutes, and centers also have direct cooperation and exchange agreements with a broad range of institutions abroad. Details are available online at: [www.oc.kyoto-u.ac.jp/agreement/en/list](http://www.oc.kyoto-u.ac.jp/agreement/en/list)

# Double/Joint Degrees

## Double Degrees

(As of May 1, 2020)

Country/Region	University	Kyoto University graduate school	Degree
France	Université de Bordeaux	Energy Science	Doctoral
	L'Ecole normale supérieure de Lyon	Science	Doctoral
	L'Ecole des hautes études en sciences sociales	Letters	Doctoral
United Kingdom	University of Glasgow	Economics	Doctoral
United States of America	Cornell University	Management	Professional
China	Tsinghua University	Global Environmental Studies	Master's
	Zhejiang University	Energy Science	Doctoral
Indonesia	Institut Teknologi Bandung	Agriculture	Master's
	Gadjah Mada University	Agriculture	Master's
	IPB University (formerly Bogor Agricultural University)	Agriculture Global Environmental Studies	Master's Master's
Malaysia	University of Malaya	Public Health, Medicine	Master's (Professional)
		Energy Science	Master's
Taiwan	National Taiwan University	Public Health, Medicine	Master's (Professional)
		Management	Master's (Professional)
		Agriculture	Master's
Thailand	Kasetsart University	Agriculture	Master's
		Energy Science	Master's
	Chulalongkorn University	Public Health, Medicine	Master's (Professional)
		Mahidol University	Public Health, Medicine Global Environmental Studies
	King Mongkut's University of Technology	Energy Science	Master's

## Joint Degrees

(As of May 1, 2020)

Country/Region	University	Kyoto University graduate school	Degree
Canada	McGill University	Medicine	Doctoral
Germany	Heidelberg University	Letters	Master's

# On-site Laboratory

The pursuit of “a flexible and dynamic approach to knowledge creation” is one component of Kyoto University’s strategy as a Designated National University. As part of those efforts, the university is implementing an initiative to establish locally-managed “On-site Laboratories” in cooperation with overseas partner universities and research institutions.

(As of June 1, 2020)

## Kyoto University Research Center San Diego

Established by	The Graduate School of Medicine
Partner institution	The University of California San Diego (UCSD), USA
Location	San Diego, USA
Functions	Joint research in the field of medicine, recruitment of international students, and expansion of collaboration with industrial partners

## IFOM-KU Joint Research Laboratory

Established by	The Graduate School of Medicine
Partner institution	The FIRC Institute of Molecular Oncology (IFOM), Italy
Location	Kyoto, Japan
Functions	Advanced cancer biology research, and training of graduate students and early-career researchers

## Kyoto University-Tsinghua University Cooperative Research and Education Center for Environmental Technology

Established by	The Graduate School of Engineering The Graduate School of Global Environmental Studies (GSGES)
Partner institution	Shenzhen International Graduate School, Tsinghua University, China
Location	Shenzhen, China
Functions	Research and education to address environmental engineering, and international double degree programs

## Kyoto University On-site Laboratory at Mahidol University for Educational and Research Collaboration in Environmental Studies

Established by	The Graduate School of Global Environmental Studies (GSGES)
Partner institution	Mahidol University, Thailand
Location	Bangkok, Thailand
Functions	Research to address environmental problems, recruitment of international students, expansion of international double degree programs, and possible development of an international joint degree program

## Kyoto University Shanghai Lab

Established by	The Institute for Chemical Research
Partner institution	Fudan University, China
Location	Shanghai, China
Functions	Promotion of cutting-edge chemical research, expansion of international collaboration and equipment sharing, and exchange of human resources with partner institutions

### Center for Advanced Genomic Field Science

Established by	The Primate Research Institute
Partner institution	Makerere University, Uganda
Location	Kampala, Uganda
Functions	Advanced studies of genomic and physiological sciences and field works, and promotion of collaborative research with African, European, and US institutions

### iPS Cell Research Center at Gladstone Institutes

Established by	The Center for iPS Cell Research and Application (CiRA)
Partner institution	Gladstone Institutes, USA
Location	San Francisco, USA
Functions	Advanced research on iPS cells, training of early-career researchers, and recruitment of international students

### Smart Materials Research Center

Established by	The Institute for Integrated Cell-Material Sciences (iCeMS), Kyoto University Institute for Advanced Study (KUIAS)
Partner institution	Vidyasirimedhi Institute of Science and Technology (VISTEC), Thailand
Location	Rayong, Thailand
Functions	Research in materials science fields, and training of graduate students and early-career researchers for active roles in international academia

### Center for Integrated Biosystems

Established by	The Institute for Integrated Cell – Material Sciences (iCeMS), Kyoto University Institute for Advanced Study (KUIAS)
Partner institution	Academia Sinica, Taiwan
Location	Taipei, Taiwan
Functions	Advanced research in the fields of biology and chemistry, expansion of collaboration with local institutes, and recruitment of international students

### Quantum Nano Medicine Research Center

Established by	The Institute for Integrated Cell – Material Sciences (iCeMS), Kyoto University Institute for Advanced Study (KUIAS)
Partner institution	The University of California Los Angeles (UCLA), USA
Location	Kyoto, Japan
Functions	Quantum nano-medicine research with a focus on cancer treatment applications, development of new research fields, and expansion of collaboration with UCLA and industrial partners

# Overseas Offices and Facilities

## Kyoto University Overseas Offices

(As of May 1, 2020)

Name	Country/Region	City	Year established
Kyoto University European Center	Germany	Heidelberg	2014
Kyoto University ASEAN Center	Thailand	Bangkok	2014
Kyoto University North American Center (Kyoto University San Diego Liaison Office)	United States of America	Washington, DC (San Diego)	2018 (2017)
Kyoto University Africa Office	Ethiopia	Addis Ababa	2018

## Departmental Overseas Offices and Facilities

(As of May 1, 2020)

Affiliation	Name	Country/Region	City	Year established
Graduate School of Science	Satellite Office at Chulalongkorn University	Thailand	Bangkok	2004
	Research Base for Biodiversity of African Tropical Forest	Gabon	Libreville	2009
Astronomical Observatory, Graduate School of Science	CHAIN Peru Station	Peru	Ica	2010
Graduate School of Medicine	Kyoto University Research Center San Diego	United States of America	San Diego	2019
Graduate School of Engineering	Kyoto University-Tsinghua University Cooperative Research and Education Center for Environmental Technology	China	Shenzhen	2005
	Global Center of Excellence Kyoto University - Institut Teknologi Bandung for GCOE Joint Research and Education Center	Indonesia	Bandung	2008
	Kyoto University-University of Malaya Overseas Base in Malaysia for Education and Research	Malaysia	Kuala Lumpur	2010
Graduate School of Agriculture	Japanese Research-Team Laboratory, Kinabalu Park Headquarters	Malaysia	Kota Kinabalu	1995
	Khon Kaen Reseach Office of the Graduate School of Agriculture, Kyoto University	Thailand	Khon Kaen	1996
	Japanese Research-Team Laboratory, Deramakot Forest Reserve	Malaysia	Sandakan	2003
	Kyoto University Research Office at Kasetsart University	Thailand	Bangkok	2014
	JASTIP Bioresource and Biodiversity Joint Laboratory	Indonesia	Bogor	2015
	Overseas Office of Graduate School of Agriculture, Kyoto University at NTU	Taiwan	Taipei	2015
Graduate School of Agriculture/Graduate School of Global Environmental Studies	Kyoto University Satellite Office at IPB University (formerly Bogor Agricultural University)	Indonesia	Bogor	2015
Graduate School of Asian and African Area Studies/Center for Southeast Asian Studies	Laos Field Station	Laos	Vientiane	2002
	Makassar Field Station	Indonesia	Makassar	2003
	Myanmar Field Station	Myanmar	Yangon, Yezin	2003
	Pekanbaru Field station	Indonesia	Pekanbaru	2010
	Cambodia Field Station	Cambodia	Phnom Penh	2010
Graduate School of Asian and African Area Studies/Center for African Area Studies	Tanzania Field Station	Tanzania	Dar-es-Salaam	2003
	Cameroon Field Station	Cameroon	Yaounde	2003
	Ethiopia Field Station	Ethiopia	Addis Ababa, Jinka	2003
	Nairobi Field Station	Kenya	Nairobi	2003
	Zambia Field Station	Zambia	Lusaka	2003
	Namibia Field Station	Namibia	Windhoek	2008
	Niger Field Station	Niger	Niamey	2012



Affiliation	Name	Country/Region	City	Year established
Graduate School of Global Environmental Studies	Hue Kyoto University GSGES Office	Viet Nam	Hue	2006
	Hanoi Kyoto University GSGES Office	Viet Nam	Hanoi	2008
	Mahidol Kyoto University GSGES Office (Kyoto University On-Site Laboratory at Mahidol University for Educational and Research Collaboration in Environmental Studies)	Thailand	Bangkok	2016
Graduate School of Global Environmental Studies/Graduate School of Engineering	Danang Kyoto University GSGES Office	Viet Nam	Da Nang	2006
Institute for Chemical Research	Kyoto University Shanghai Lab	China	Shanghai	2019
Institute of Advanced Energy	Thai Research Station Collaborative Research Laboratory	Thailand	Pathum Thani	2003
	JASTIP Energy & Environment Joint Laboratory	Thailand	Pathum Thani	2016
	JASTIP Energy & Environment Joint Laboratory	Thailand	Bangkok	2016
Research Institute for Sustainable Humanosphere	Equatorial Atmosphere Radar	Indonesia	Bukittinggi	2001
	RISH-RDUB Satellite Office	Indonesia	Bogor	2004
	MHP Acacia Research Office	Indonesia	Muara Enim	2005
	ARN Joint Laboratory/JASTIP Bioresources & Biodiversity Joint Laboratory	Indonesia	Bogor	2016
Disaster Prevention Research Institute	JASTIP Disaster Prevention Joint Laboratory	Malaysia	Kuala Lumpur	2016
	JASTIP Disaster Prevention Joint Laboratory	Viet Nam	Ho Chi Minh	2016
Primate Research Institute	Research Project on Bonobos in the Luo Reserve	Democratic Republic of the Congo	Djolu	1973
	Kalinzu Forest Research Project by the Primate Research Institute	Uganda	Bushenyi	1997
	Center for Advanced Genomic Field Science	Uganda	Kampala	2019
Center for Southeast Asian Studies	Bangkok Liaison Office	Thailand	Bangkok	1963
	Jakarta Liaison Office	Indonesia	Jakarta	1970
	CSEAS Lima Office	Peru	Lima	2006
	JASTIP Headquarters	Thailand	Pathum Thani	2016
Center for iPS Cell Research and Application	iPS Cell Research Center at Gladstone Institutes	United States of America	San Francisco	2019
Center for Ecological Research	Field Station for Tropical Forest and Biodiversity Studies	Malaysia	Miri	1991
Wildlife Research Center	Kyoto University African Ape Expedition	Tanzania	Kigoma	1965
	African Anthropological and Biological Field Research Center	Tanzania	Arusha	2006
	Ugalla Wildlife Research Station	Tanzania	Ugalla	2008
	Ghana Research Station	Ghana	Accra	2009
	Kuala Sungai Danum Research Station	Malaysia	Danum Valley	2010
	Tanzania Research Station	Tanzania	Dar-es-Salaama	2014
	Portugal Research Station	Portugal	Viana do Castelo	2016
	DR Congo Research Station	Democratic Republic of Congo	Mbali	2016
Center for African Area Studies	Kyoto University Africa Office	Ethiopia	Addis Ababa	2018
	Smart Materials Research Center	Thailand	Rayong	2018
Institute for Advanced Study	Center for Integrated Biosystems	Taiwan	Taipei	2019

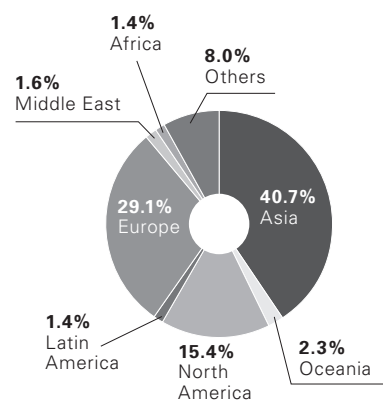
# Researchers from Abroad

Academic year 2018 (Apr. 1-Mar. 31)

Country/Region	Number of researchers
<b>ASIA</b>	
Bangladesh	8
Bhutan	4
Brunei	2
Cambodia	6
China	354
Timor-Leste	3
India	96
Indonesia	101
Laos	6
Malaysia	47
Myanmar	21
Nepal	6
North Korea	2
Philippines	25
Korea	187
Singapore	38
Sri Lanka	4
Taiwan	178
Thailand	96
Viet Nam	22
<b>OCEANIA</b>	
Australia	56
Kiribati	1
New Zealand	12
<b>NORTH AMERICA</b>	
Canada	56
United States of America	401
<b>LATIN AMERICA</b>	
Antigua and Barbuda	1
Argentina	1
Brazil	11
Chile	11
Colombia	1
Grenada	2
Honduras	1
Mexico	8
Peru	2
Saint Christopher and Nevis	1
Uruguay	1

Country/Region	Number of researchers
<b>EUROPE</b>	
Austria	16
Belgium	19
Bosnia and Herzegovina	2
Bulgaria	1
Croatia	6
Czech Republic	16
Denmark	5
Estonia	1
Finland	11
France	198
Germany	159
Greece	5
Hungary	11
Iceland	6
Ireland	4
Italy	32
Lithuania	3
Netherlands	41
North Macedonia	4
Norway	9
Poland	19
Portugal	9
Romania	2
Russia	44
Serbia	2
Slovakia	2
Slovenia	1
Spain	34
Sweden	18
Switzerland	30
United Kingdom	152
<b>MIDDLE EAST</b>	
Iran	6
Israel	25
Jordan	1
Oman	1
Saudi Arabia	3
Syria	1
Turkey	10
United Arab Emirates	1

Country/Region	Number of researchers
<b>AFRICA</b>	
Algeria	2
Cameroon	1
Egypt	19
Ethiopia	1
Ghana	1
Kenya	1
Madagascar	3
Mozambique	1
Nigeria	2
Republic of South Africa	2
Tanzania	4
Togo	1
Uganda	3
<b>OTHERS</b>	
Others	237
<b>Total</b>	<b>2,960</b>



**Total: 2,960 researchers**

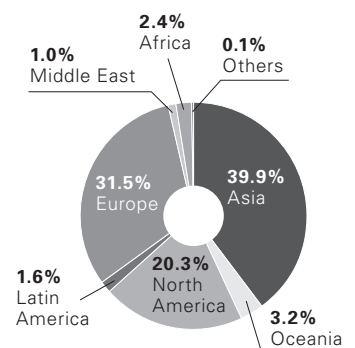
# Researchers going Abroad

Academic year 2018 (Apr. 1-Mar. 31)

Country/Region	Number of researchers
<b>ASIA</b>	
Bangladesh	21
Bhutan	33
Brunei	2
Cambodia	28
China	816
Timor-Leste	2
India	132
Indonesia	350
Laos	29
Malaysia	156
Mongolia	9
Myanmar	90
Nepal	23
Pakistan	2
Philippines	45
Korea	472
Singapore	117
Sri Lanka	10
Taiwan	458
Thailand	321
Viet Nam	147
<b>OCEANIA</b>	
Australia	194
Fiji	7
Micronesia	1
New Zealand	45
Papua New Guinea	4
Solomon	2
Vanuatu	6
<b>NORTH AMERICA</b>	
Canada	161
United States of America	1502
<b>LATIN AMERICA</b>	
Argentina	13
Bahamas	2
Bolivia	2
Brazil	47
Chile	13
Colombia	5
Cuba	2
Mexico	30
Panama	2
Paraguay	1
Peru	16
Uruguay	1
<b>EUROPE</b>	
Armenia	7
Austria	113
Azerbaijan	1
Belgium	50

Country/Region	Number of researchers
Bosnia and Herzegovina	2
Bulgaria	2
Croatia	16
Cyprus	12
Czech Republic	43
Denmark	38
Estonia	7
Finland	38
France	410
Georgia	3
Germany	462
Greece	40
Hungary	31
Iceland	5
Ireland	45
Italy	245
Kazakhstan	6
Kosovo	1
Kyrgyz Republic	6
Latvia	1
Lithuania	5
Luxembourg	3
Malta	7
Montenegro	3
Netherlands	74
North Macedonia	1
Norway	23
Poland	54
Portugal	55
Romania	7
Russia	53
Serbia	8
Slovakia	6
Slovenia	15
Spain	148
Sweden	73
Switzerland	102
United Kingdom	349
Uzbekistan	9
Vatican	1
<b>MIDDLE EAST</b>	
Iran	9
Israel	19
Jordan	5
Lebanon	1
Oman	2
Qatar	1
Saudi Arabia	6
Turkey	25
United Arab Emirates	16

Country/Region	Number of researchers
<b>AFRICA</b>	
Algeria	1
Benin	1
Botswana	4
Burkina Faso	1
Cameroon	12
Democratic Republic of the Congo	9
Djibouti	1
Egypt	4
Ethiopia	21
Gabon	1
Ghana	10
Guinea	6
Kenya	34
Madagascar	13
Malawi	7
Morocco	6
Mozambique	4
Niger	1
Nigeria	3
Republic of South Africa	8
Rwanda	2
Senegal	3
Tanzania	22
Tunisia	2
Uganda	15
Zambia	5
<b>OTHERS</b>	
Others	8
<b>Total</b>	<b>8,187</b>



**Total: 8,187 researchers**

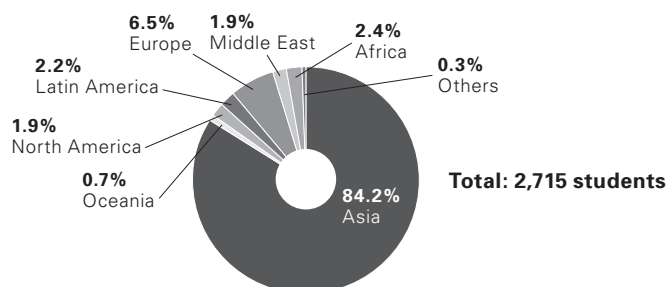
# Students from Abroad

(As of May 1, 2020)

Country/Region	Undergraduates		Graduate students				Other*	Total
	Under-graduates	Non-regular students	Master's course	Doctoral course	Professional course	Non-regular students	Non-regular students	
<b>ASIA</b>								
Bangladesh			6	14				20
Bhutan			3					3
Cambodia			6				2	14
China	110	52	613	548	82	75	42	1,522
India	3		5	43	4		2	57
Indonesia	5		34	51	6	8	2	106
Laos	1	1		1			1	4
Malaysia	3		4	22	3	1		33
Mongolia	3		3	4	2		3	15
Myanmar	3		7	14	2	3	1	30
Nepal			3	4			1	8
Pakistan			1	5	1		2	9
Philippines			7	11	2			20
Korea	55	8	49	78	6	5	6	207
Singapore	3		3	3	2			11
Sri Lanka	2	2		3	1	1		9
Taiwan	10	4	33	60	4	4	1	116
Thailand	8	2	8	30	4	4	2	58
Viet Nam	3	1	17	19		2	2	44
<b>OCEANIA</b>								
Australia	1		2	2			1	6
Fiji				2		1		3
Kiribati			1					1
New Zealand			1	2				3
Papua New Guinea			1				1	2
Samoa						1		1
Solomon				1		1		2
<b>NORTH AMERICA</b>								
Canada	1		6	3	1	1	2	14
United States of America	1	3	10	18	1	2	2	37
<b>LATIN AMERICA</b>								
Argentina	1		1	2				4
Belize			1					1
Brazil	3	1	3	9		1		17
Chile			1	1	1	1		4
Colombia				2				2
Costa Rica			1	2				3
Ecuador						1		1
Grenada				1				1
Guatemala						1		1
Haiti						1	1	2
Honduras						1		1
Jamaica				1			1	2
Mexico			2	3			1	6
Paraguay		1			1			2
Peru	2		1	3		1	1	8
Uruguay		1		1				2
Venezuela						1	1	2
<b>EUROPE</b>								
Albania							1	1
Austria		2	1	2			3	8
Azerbaijan			1		1		2	4
Belgium			2	1		1		4
Bulgaria		1					1	2
Croatia				1				1
Cyprus		1						1
Denmark		1	1			1		3
Estonia				3				3
Finland				2			2	4
France		5	2	13		7		27
Georgia			1					1
Germany		4	5	3		7		19
Greece		1		1		2		4
Hungary		1		1			1	3
Iceland							1	1
Ireland		2	1				1	4
Italy	1	2		4				8
Kazakhstan	1		1	2				4

Country/Region	Undergraduates		Graduate students				Other*	Total
	Under-graduates	Non-regular students	Master's course	Doctoral course	Professional course	Non-regular students	Non-regular students	
Kosovo						1		1
Kyrgyz Republic			1					1
Latvia				1				1
Lithuania				2			1	3
Luxembourg				1				1
Netherlands	1	1	2	1			1	6
Norway		1						1
Poland		1					2	3
Portugal				2				2
Romania		1		3				4
Russia			3	3			2	8
Spain		3	2	3			2	10
Sweden						1		1
Switzerland		1		1		2	1	5
Tajikistan				1				1
Turkmenistan					1			1
Ukraine	1		1	1			1	4
United Kingdom		13		4			4	21
MIDDLE EAST								
Afghanistan				2	1	1	1	5
Bahrain				1				1
Iran	1		4	9		1	1	16
Iraq				1		1	1	3
Israel	1	1		2		1	1	6
Jordan							1	1
Lebanon					1			1
Oman			2		1			3
Palestine				5				5
Syria		1				1	1	3
Turkey			1	5	1		1	8
AFRICA								
Angola						1		1
Benin				1				1
Botswana			1	1				2
Cameroon				2				2
Democratic Republic of the Congo				1		1		2
Egypt	1	1	2	12		1	3	20
Ethiopia				1				1
Gabon							1	1
Ghana			1					1
Guinea				2				2
Kenya			2	3			1	6
Liberia				1				1
Madagascar				1			1	2
Mali				1				1
Morocco					1			1
Mozambique			1					1
Nigeria				3				3
Republic of South Africa			1	2		1	1	5
Senegal						1		1
Sudan				4			1	5
Tunisia			1					1
Uganda				2		1		3
Zambia			1					1
Zimbabwe			1			1		2
OTHERS								
Others		5	1				1	7
<b>Total</b>	<b>225</b>	<b>125</b>	<b>876</b>	<b>1,087</b>	<b>130</b>	<b>151</b>	<b>121</b>	<b>2,715</b>

\*Research centers and other academic facilities

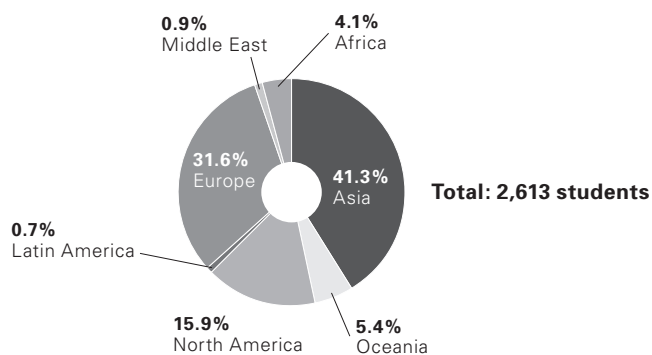


# Students going Abroad

Academic year 2019 (Apr. 1- Mar. 31)

Country/Region	Under-graduates	Master's course	Doctoral course	Professional course	Non-regular students	Total
<b>ASIA</b>						
Bangladesh		2	2			4
Bhutan	13		3			16
Cambodia		2	3			5
China	21	73	97	1	6	198
India	1	8	23			32
Indonesia	13	34	49		1	97
Laos		1	10			11
Malaysia	5	29	23		2	59
Mongolia		1	4			5
Myanmar	2	7	25			34
Nepal		7	7			14
Pakistan			4			4
Philippines	6	5	7			18
Korea	19	62	58		2	141
Singapore	12	6	15			33
Sri Lanka			5			5
Taiwan	10	57	60	22		149
Thailand	45	60	45		8	158
Timor-Leste			1			1
Viet Nam	23	34	36		3	96
<b>OCEANIA</b>						
Australia	34	16	29	2		81
Fiji	1	5	2			8
Kiribati			1			1
Marshall			1			1
New Caledonia		1				1
New Zealand	20	11	10			41
Papua New Guinea			1		1	2
Samoa			1			1
Solomon			3			3
Vanuatu				1		1
<b>NORTH AMERICA</b>						
Canada	30	26	31			87
United States of America	61	76	185	6	1	329
<b>LATIN AMERICA</b>						
Argentina			1			1
Bahamas			1			1
Bolivia	1					1
Brazil			4			4
Chile		2	2			4
Mexico		1	4			5
Panama			1			1
Peru			2			2
<b>EUROPE</b>						
Armenia		2				2
Austria	1	8	20	2		31
Belgium	3	1	6	25		35
Bosnia and Herzegovina			1			1
Croatia		1	1			2
Czech Republic		6	15		2	23
Denmark	2	7	4			13
Estonia	2		5			7
Finland	3	2	3			8
France	24	42	62	24		152
Germany	20	57	58	24	1	160
Greece		5	5			10
Hungary		3	4			7
Iceland	1		2			3
Ireland	1	2	1			4
Italy	4	15	22			41
Kazakhstan	1					1
Kyrgyz Republic		3				3
Latvia			1			1
Luxembourg	1					1
Malta	2	1	1			4
Netherlands	4	15	16		1	36

Country/Region	Under-graduates	Master's course	Doctoral course	Professional course	Non-regular students	Total
Norway	2	4	2			8
Poland	1		3			4
Portugal		7	14			21
Romania			1			1
Russia	1	5	7			13
Serbia	1		1			2
Slovenia		1	2			3
Spain		10	22			32
Sweden	8	3	9			20
Switzerland	4	9	26			39
Ukraine	1					1
United Kingdom	21	35	53	26		135
Uzbekistan			3			3
<b>MIDDLE EAST</b>						
Iran			2			2
Israel	2	1	2			5
Lebanon			1			1
Oman		1				1
Palestinian Authority			1			1
Saudi Arabia	1		2			3
Turkey	2		5	2		9
United Arab Emirates			1			1
<b>AFRICA</b>						
Algeria			1			1
Benin			2			2
Botswana		1	2			3
Cameroon			7			7
Democratic Republic of the Congo		3	3			6
Egypt	3		2			5
Ethiopia		2	11			13
Gabon			4			4
Gambia			1			1
Ghana			1			1
Guinea			2			2
Kenya	1		7			8
Madagascar	1	2	8			11
Malawi		1				1
Morocco	1		1			2
Mozambique		1	3			4
Niger			1			1
Nigeria			1			1
Republic of South Africa			2			2
Rwanda	2		1			3
Senegal		1	4			5
Tanzania		5	5			10
Uganda	1	1	7			9
Zambia	1	1	4			6
<b>Total</b>	<b>440</b>	<b>790</b>	<b>1,220</b>	<b>135</b>	<b>28</b>	<b>2,613</b>



# KYOTO UNIVERSITY

[www.kyoto-u.ac.jp/en](http://www.kyoto-u.ac.jp/en)

## CONTACT

### **International Affairs Division**

Address: Yoshida-honmachi, Sakyo-ku, Kyoto 606-8501

Email: [ipromo@mail2.adm.kyoto-u.ac.jp](mailto:ipromo@mail2.adm.kyoto-u.ac.jp)

[www.oc.kyoto-u.ac.jp/en](http://www.oc.kyoto-u.ac.jp/en)

### **International Education and Student Mobility Division**

Address: Yoshida-honmachi, Sakyo-ku, Kyoto 606-8501

Email: [studyku@mail2.adm.kyoto-u.ac.jp](mailto:studyku@mail2.adm.kyoto-u.ac.jp)

[www.kyoto-u.ac.jp/en/education-campus](http://www.kyoto-u.ac.jp/en/education-campus)