

# KYOTO UNIVERSITY

## Facts and Figures 2018–2019



## KYOTO UNIVERSITY

[www.kyoto-u.ac.jp/en](http://www.kyoto-u.ac.jp/en)

### Contact

#### **International Affairs Division**

Address: Yoshida-honmachi, Sakyo-ku, Kyoto 606-8501

Email: [ipromo@mail2.adm.kyoto-u.ac.jp](mailto:ipromo@mail2.adm.kyoto-u.ac.jp)

[www.oc.kyoto-u.ac.jp/en/](http://www.oc.kyoto-u.ac.jp/en/)

#### **International Education and Student Mobility Division**

Address: Yoshida-honmachi, Sakyo-ku, Kyoto 606-8501

Email: [studyku@mail2.adm.kyoto-u.ac.jp](mailto:studyku@mail2.adm.kyoto-u.ac.jp)

[www.kyoto-u.ac.jp/en/education-campus](http://www.kyoto-u.ac.jp/en/education-campus)

Revised November 2018



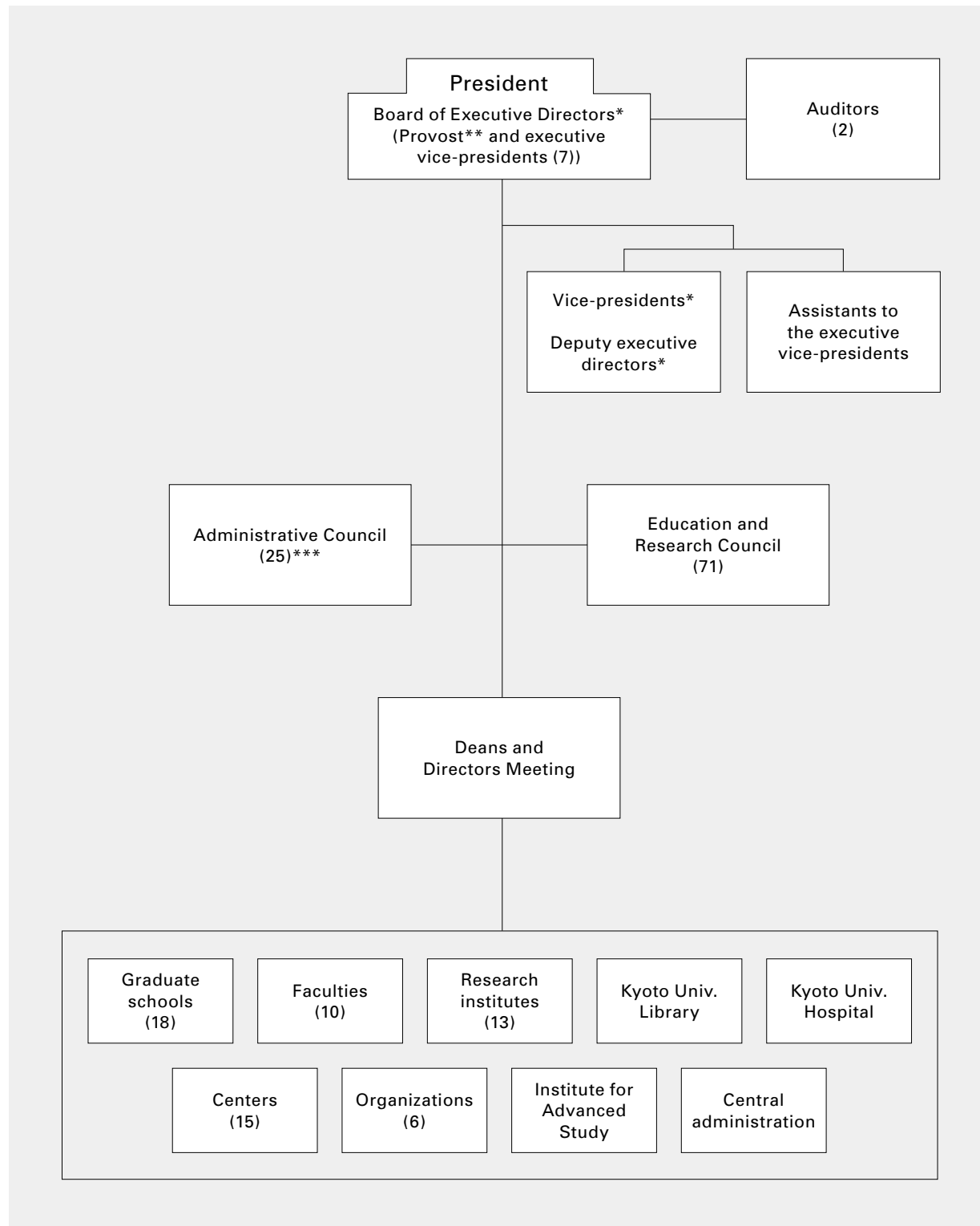
京都大学

# Contents

Organizational structure	1
Staff and students	2
Finance	3
Industry-academia collaboration	4
University facilities	6
Academic exchange memoranda	7
Double/joint degrees	11
Leading education programs funded by MEXT	12
Overseas offices and facilities	13
Researchers from abroad	15
Researchers going abroad	16
Students from abroad	17
Students going abroad	19

# Organizational structure

(As of Apr. 1, 2018)



\* Each of the (executive) vice-presidents and deputy executive directors is in charge of a different area of university affairs.

\*\* One executive vice-president concurrently serves as provost.

\*\*\* 25 members, 12 of whom are Kyoto University faculty and staff.

# Staff and students

## University faculty and staff

(As of May 1, 2018)

Position	Number				Total	
	Permanent		Fixed term			
President	1	-	-	-	1	-
Executive directors	7	-	-	-	7	-
Auditors	2	-	-	-	2	-
Professors	993	(21)	94	(40)	1,087	(61)
Associate professors	769	(57)	172	(30)	941	(87)
Senior lecturers	168	(26)	77	(20)	245	(46)
Assistant professors	767	(28)	386	(35)	1,153	(63)
Research associates	2	-	-	-	2	-
Researchers (non-teaching)	-	-	506	-	506	-
Non-teaching staff	2,762	(12)	528	(157)	3,290	(169)
Specialist staff	9	-	70	-	79	-
<b>Total</b>	<b>5,480</b>	<b>(144)</b>	<b>1,833</b>	<b>(282)</b>	<b>7,313</b>	<b>(426)</b>

Number of international faculty and staff shown in parenthesis.

## Enrollment

(As of May 1 of each year)

Year	Undergraduate	Graduate	Total
2018	13,227	9,427	22,654
2017	13,360	9,338	22,698
2016	13,511	9,351	22,862
2015	13,569	9,216	22,785
2014	13,580	9,226	22,806

## Number of graduates

Academic year (Apr. 1–Mar. 31)	Undergraduate	Graduate		Total
		Master's course	Doctoral course	
2017	2,929	2,275	699	5,903
2016	2,963	2,250	665	5,878
2015	2,931	2,149	718	5,798
2014	2,885	2,218	723	5,826
2013	2,891	2,215	674	5,780

## Number of degrees conferred

Academic year (Apr. 1–Mar. 31)	Master's degree	Doctoral degree
2017	2,275	777
2016	2,250	745
2015	2,149	803
2014	2,218	837
2013	2,215	745

## Number of professional degrees conferred

Academic year (Apr. 1–Mar. 31)	Law school	School of public health	School of government	School of management	Total
2017	129	34	45	78	286
2016	133	37	35	78	283
2015	139	34	36	86	295
2014	148	28	47	85	308
2013	153	26	41	90	310

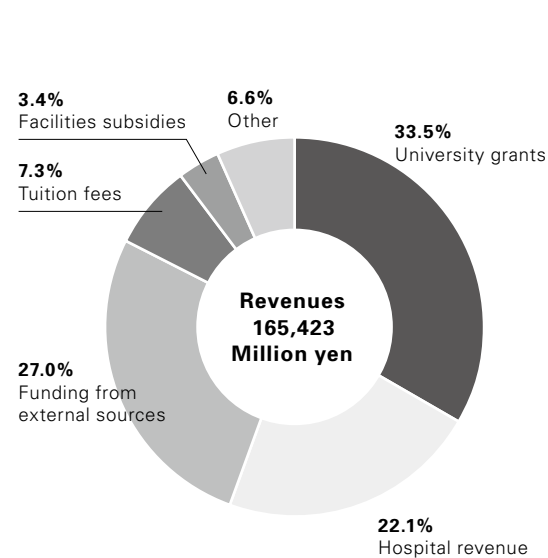
# Finance

## Financial statement

\*Calculations based on the exchange rate as of Mar. 30, 2018 (US\$1=¥106.24).

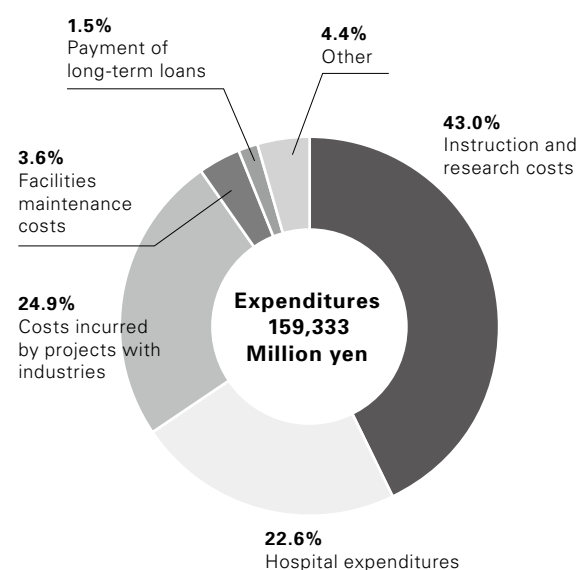
### Revenues in academic year 2017 (Apr. 1–Mar. 31)

Category	Million yen	Million US \$
University grants	55,393	521.39
Facilities subsidies	5,706	53.71
Tuition fees	12,140	114.27
Hospital revenue	36,499	343.55
Funding from external sources	44,736	421.08
Other	10,949	103.06
<b>Total</b>	<b>165,423</b>	<b>1557.07</b>



### Expenditures in academic year 2017 (Apr. 1–Mar. 31)

Category	Million yen	Million US \$
Instruction and research costs	68,471	644.49
Hospital expenditures	36,057	339.39
Facilities maintenance costs	5,738	54.01
Costs incurred by projects with industries	39,642	373.14
Payment of long-term loans	2,419	22.77
Other	7,006	65.95
<b>Total</b>	<b>159,333</b>	<b>1499.75</b>



# Industry-academia collaboration

## Invention disclosure

Academic year (Apr. 1–Mar. 31)	Number of invention disclosure forms submitted
2017	361
2016	370
2015	439
2014	412
2013	393
2012	443
2011	412
2010	396

## Patent application and acquisition

Academic year (Apr. 1–Mar. 31)	Domestic		Foreign	
	Number of patent applications	Number of patents issued	Number of patent applications <sup>1</sup>	Number of patents issued <sup>2</sup>
2017	230 (148)	137 (104)	380 (254)	277 (172)
2016	286 (201)	188 (142)	398 (290)	258 (170)
2015	315 (227)	161 (120)	360 (260)	184 (126)
2014	313 (222)	161 (127)	340 (229)	179 (113)
2013	290 (202)	156 (108)	331 (215)	101 (63)
2012	273 (187)	132 (98)	313 (192)	75 (43)
2011	237 (174)	109 (80)	298 (196)	79 (23)
2010	230 (169)	68 (38)	261 (150)	41 (25)

Number of joint applications or co-owned patents shown in parenthesis.

<sup>1</sup> Applications under the Patent Cooperation Treaty etc. count as one, regardless of the number of designated countries.

<sup>2</sup> Patents issued in multiple countries are counted separately for each different country.

## Current number of patents (As of Mar. 31, 2018)

Domestic	Foreign
1,081 (718)	1,033 (654)

Number of joint applications or co-owned patents shown in parenthesis.

## Utilization of intellectual property

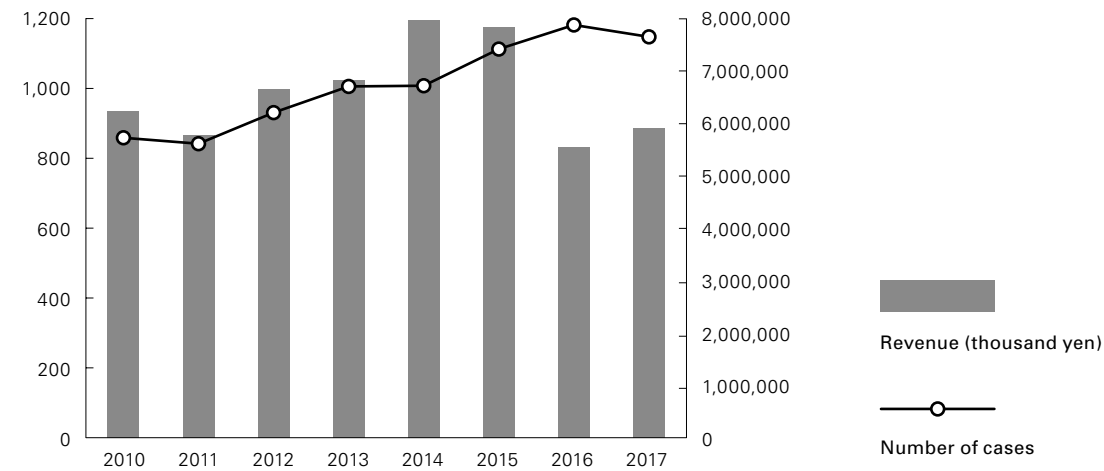
Academic year (Apr. 1–Mar. 31)	Patents		Copyrights <sup>1</sup>		Research materials		Total
	Number of licenses <sup>2</sup>	Revenue (thousand yen)	Number of licenses	Revenue (thousand yen)	Number of licenses	Revenue (thousand yen)	Revenue (thousand yen)
2017	179	640,395	11	2,639	69	60,862	<b>703,896</b>
2016	159	460,036	11	3,120	67	80,347	<b>543,503</b>
2015	144	371,154	11	2,780	53	14,768	<b>388,702</b>
2014	158	357,570	25	8,599	57	16,157	<b>382,326</b>
2013	139	310,530	22	4,515	56	11,901	<b>326,946</b>
2012	115	191,144	16	9,965	32	53,217	<b>254,326</b>
2011	101	184,594	14	4,172	25	18,801	<b>207,567</b>
2010	59	154,575	6	2,182	28	15,865	<b>172,622</b>

<sup>1</sup> Databases and computer programs or digital content (except research papers, books, or reports)

<sup>2</sup> Including assignment

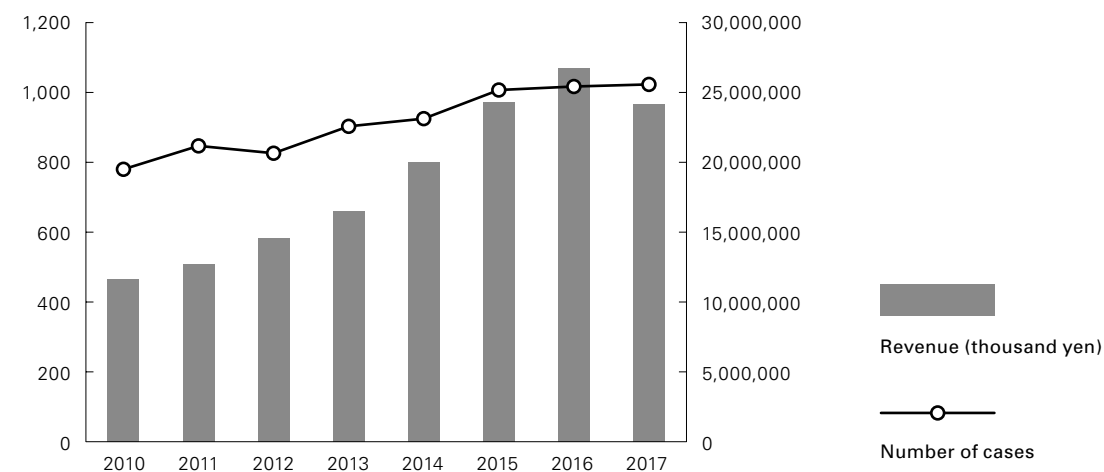
## Collaborative research

Academic year (Apr. 1–Mar. 31)	Number of cases	Revenue (thousand yen)
2017	1,150	5,910,914
2016	1,184	5,540,024
2015	1,115	7,831,464
2014	1,010	7,966,350
2013	1,008	6,817,133
2012	933	6,649,823
2011	844	5,782,291
2010	861	6,231,529



## Sponsored research

Academic year (Apr. 1–Mar. 31)	Number of cases	Revenue (thousand yen)
2017	1,023	24,167,273
2016	1,017	26,770,423
2015	1,007	24,296,814
2014	925	19,979,788
2013	903	16,465,535
2012	826	14,574,873
2011	847	12,718,523
2010	780	11,626,147



# University facilities

## Library collection

(As of Mar. 31, 2018)

	Number of books			Number of magazines and periodicals		
	Japanese	International	Total	Japanese	International	Total
Main university library	710,001	280,777	<b>990,778</b>	14,481	9,856	<b>24,337</b>
Other university libraries	3,039,078	3,063,417	<b>6,102,495</b>	51,899	49,388	<b>101,287</b>
<b>Combined total</b>	<b>3,749,079</b>	<b>3,344,194</b>	<b>7,093,273</b>	<b>66,380</b>	<b>59,244</b>	<b>125,624</b>

## Kyoto University Hospital

Academic year 2017 (Apr. 1–Mar. 31)

Number of beds	Number of inpatients	Number of outpatients
1,121	336,501	688,992

## Number of visitors to the Kyoto University Museum

Academic year 2017 (Apr. 1–Mar. 31)

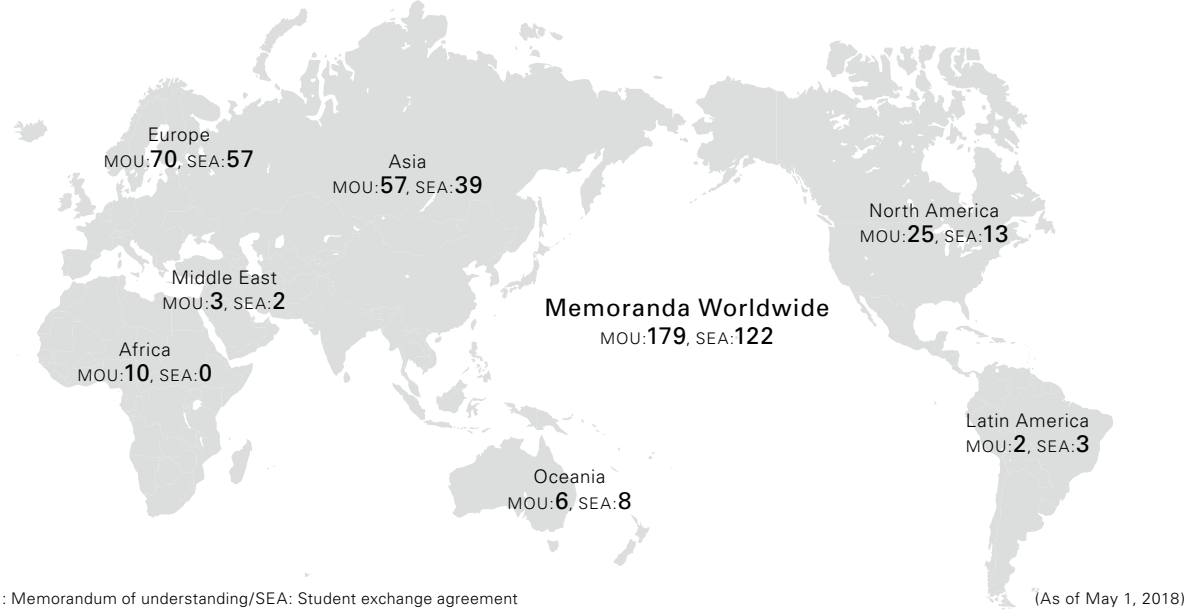
Paying visitors			Non-paying visitors	Total
Individuals	Groups	Total		
14,793	756	15,549	22,678	<b>38,277</b>

## Number of visitors to the Seto Marine Biological Laboratory Aquarium (Shirahama Aquarium)

Academic year 2017 (Apr. 1–Mar. 31)

Paying visitors			Non-paying visitors	Total
Individuals	Groups	Total		
77,400	1,960	79,360	2,409	<b>81,769</b>

# Academic exchange memoranda



Country/region	Institution	MOU year of conclusion	SEA year of conclusion
<b>ASIA</b>			
<b>Bhutan</b>	Royal University of Bhutan	2013	-
<b>Brunei</b>	Universiti Brunei Darussalam	2014	2015
<b>China</b>	Northwest University	1980	-
	Wuhan University	1980	2007
	Peking University	1983	2008
	Tsinghua University	1998	2007
	Fudan University	2002	2007
	Zhejiang University	2003	2008
	University of Science and Technology of China	2005	-
	Hong Kong University of Science and Technology	2005	2006
	Nanjing University	2006	2007
	University of Hong Kong	-	2007
<b>India</b>	Chinese University of Hong Kong	-	2007
	Shanghai Jiao Tong University	2008	2008
	Xi'an Jiaotong University	2008	2010
	Nankai University	-	2014
	Hong Kong Polytechnic University	-	2017
<b>Indonesia</b>	Banaras Hindu University	2015	2015
	Indian Institute of Technology Bombay (IITB)	2015	-
	Indian Institute of Technology Guwahati (IITG)	2016	2016
	Indian Institute of Technology Kanpur (IITK)	2016	-
	Indian Institute of Science	2017	-
<b>Laos</b>	Institut Teknologi Bandung	2006	2016
	University of Indonesia	2008	2015
	Gadjah Mada University	2012	2016
	Bogor Agricultural University	2013	-
	Hasanuddin University	2014	-
	Indonesian Institute of Sciences (LIPI)	2014	-
	Center for International Forestry Research (CIFOR)	2016	-
Agency of Peatland Restoration (Badan Restorasi Gambut)	2016	-	
<b>Malaysia</b>	National University of Laos	2002	-
	University of Malaya	2008	2015
<b>Malaysia</b>	Universiti Teknologi Malaysia	2016	2017
	Universiti Kebangsaan Malaysia	2017	-

Country/region	Institution	MOU year of conclusion	SEA year of conclusion
<b>Myanmar</b>	Mandalay Technological University	2013	-
	Yangon Technological University	2013	-
	University of Yangon	2015	-
	Yezin Agricultural University	2017	-
<b>Nepal</b>	Tribhuvan University	2015	-
<b>Philippines</b>	University of the Philippines	2015	2015
<b>Republic of Korea</b>	Kyungpook National University	1984	1996
	Seoul National University	1991	1997
	Yonsei University	1998	1999
	Korea University	2002	2006
	Korea Advanced Institute of Science and Technology	2005	2017
	Pohang University of Science and Technology	2007	2007
<b>Singapore</b>	Konkuk University	2012	-
	National University of Singapore	1999	1999
<b>Taiwan</b>	Nanyang Technological University	2013	2014
	National Taiwan University	2005	2005
<b>Thailand</b>	National Tsing Hua University	2006	2007
	Kasetsart University	1984	2001
	Chulalongkorn University	2005	2006
	Thammasat University	2005	2006
	Mahidol University	2014	-
	Chiang Mai University	2014	2014
<b>Viet Nam</b>	Asian Institute of Technology	2017	-
	Vietnam National University, Hanoi	2007	2012
	Hue University	2007	2016
	Hanoi University of Science and Technology	2009	-
<b>Viet Nam</b>	University of Danang	2014	2016
	<b>OCEANIA</b>		
<b>Australia</b>	University of Queensland	1981	2012
	University of Melbourne	1997	1997
	University of New South Wales	1998	1998
	University of Sydney	1999	1999
	Australian National University	2008	2008
	University of Adelaide	-	2018
<b>New Zealand</b>	University of Auckland	1997	1997
	University of Otago	-	2016
<b>NORTH AMERICA</b>			
<b>Canada</b>	University of Toronto	1991	1997
	La Conference des Recteurs et des Principaux des Universites du Quebec	1994	1998
	University of Waterloo	2003	2006
	McGill University	2014	2014
	University of British Columbia	2014	2015
	Concordia University	2014	2014
<b>United States of America</b>	Wayne State University	1985	-
	Stanford University	1989	-
	University of California	1990	-
	NYU Tandon School of Engineering (formerly Polytechnic University)	1990	-
	Brown University	1992	-
	George Washington University	1998	1998
	Tufts University	1998	-
	University of Illinois at Urbana-Champaign	1999	-
	University of Pennsylvania	1999	2006
	University of Hawai'i	2003	2005
	University of Michigan	2003	-
	University of Washington	2011	2011
	University of California, Davis	2011	-
	University of Wisconsin-Madison	-	2013
University of California, San Diego	2014	-	
Olin College of Engineering	2014	-	
University of Notre Dame Du Lac	2014	2016	

Country/region	Institution	MOU year of conclusion	SEA year of conclusion
United States of America	Massachusetts Institute of Technology	2015	-
	University of California Berkeley	2015	-
	University of Texas at Austin	-	2015
	Rice University	2017	-
<b>LATIN AMERICA</b>			
Brazil	University of São Paulo	2014	2014
Mexico	University of Guadalajara	1983	2006
	Instituto Tecnológico y de Estudios Superiores de Monterrey	-	2018
<b>EUROPE</b>			
Austria	University of Vienna	1993	1997
Belgium	Université Catholique de Louvain	1997	1997
Czech Republic	Charles University	1990	-
Finland	University of Helsinki	2011	2011
France	Université de Paris 7	1979	2015
	Université de Strasbourg	1991	2000
	Le Consortium des Universités de Grenoble	2000	2000
	École Normale Supérieure	2009	2009
	Institut d'Etudes Politiques de Paris (Sciences Po)	-	2009
	Centre National de la Recherche Scientifique	2013	-
	Université de Bordeaux	2014	2015
	International Fusion Energy Organization (ITER)	2014	-
	Agropolis International	2014	-
	École des Hautes Études en Sciences Sociales (EHESS)	2015	-
	Institut National des Langues et Civilisations Orientales (INALCO)	2016	2016
	MINES ParisTech	2016	2016
	École Normale Supérieure Paris-Saclay	2017	-
	Université Paris-Saclay	2018	-
	Germany	Free University of Berlin	1984
Ludwig Maximilians University of Munich		1989	1998
Rheinisch Friedrich Wilhelm University of Bonn		1990	1998
Heidelberg University		1990	1997
Humboldt University of Berlin		1998	1999
Technische Universität München		2006	2007
Georg-August-Universität Göttingen		2011	2011
Karlsruhe Institute of Technology		2011	2011
University of Cologne		2013	2017
RWTH Aachen University		2014	2014
Berlin University of Technology		2016	2016
Universität Hamburg		2017	2017
Technische Universität Dresden		2018	-
Hungary	Eötvös Loránd University	-	2018
Iceland	University of Iceland	-	2016
Ireland	University College Dublin, National University of Ireland Dublin	2014	2014
	Trinity College Dublin, the University of Dublin	2014	2014
Italy	University of Siena	1989	-
	University of Bologna	1995	-
	Politecnico di Milano	2014	2014
	Università Ca' Foscari Venezia	2015	2015
Luxembourg	University of Luxembourg	2016	2016
Netherlands	Leiden University	1997	1997
	Utrecht University	1997	1997
	University of Groningen	2013	2014
Norway	Norwegian University of Science and Technology	2014	2014
	University of Oslo	-	2018
Poland	Jagiellonian University	2013	2017
Russia	Lomonosov Moscow State University	1987	-
	Saint-Petersburg State University	2013	-
Spain	Universitat de Barcelona	2014	2014
	Universitat Autònoma de Barcelona	2017	2017

Country/region	Institution	MOU year of conclusion	SEA year of conclusion
Sweden	Uppsala University	1997	1997
	Stockholm University	1997	1997
	KTH Royal Institute of Technology	2005	2005
	Lund University	2014	-
Switzerland	Swiss Federal Institute of Technology (ETH Zurich)	1989	-
	University of Lausanne	1997	1999
	University of Zurich	2013	2014
	Ecole Polytechnique Fédérale de Lausanne (EPFL)	2015	2015
Ukraine	National Technical University of Ukraine "Kyiv Polytechnic Institute"	2013	-
	Taras Shevchenko National University of Kyiv	2014	-
United Kingdom	University of Sussex	1989	2016
	University of Oxford	1991	-
	University of Cambridge	1997	-
	University of Nottingham	1999	-
	University of Edinburgh	2005	2011
	University of Sheffield	2006	2006
	University of Manchester	2006	2007
	University of Bristol	2011	2012
	Institute of Education University of London	2011	-
	Newcastle University	-	2011
	University of Glasgow	2013	2015
	King's College London (KCL)	2014	2014
	University of Birmingham	2015	2011
	University of Leeds	2016	2016
	University of Southampton	2017	2012
	University of Durham	-	2018
University of Exeter	-	2018	
<b>MIDDLE EAST</b>			
Israel	Tel Aviv University	1999	2006
Saudi Arabia	King Abdulaziz University (KAU)	2014	-
Turkey	Koç University	2011	2011
<b>AFRICA</b>			
Botswana	University of Botswana	2012	-
Democratic Republic of the Congo	University of Kinshasa	2015	-
Egypt	Egyptian Academy of Science, Research and Technology	2010	-
	Egypt-Japan University of Science and Technology (E-JUST)	2012	-
Ethiopia	Addis Ababa University	2017	-
Ghana	University of Ghana	2017	-
Guinea	University of Conakry	2013	-
Morocco	Mohammed V University of Rabat	2016	-
Sudan	University of Khartoum	2001	-
Uganda	Makerere University	2015	-
<b>OTHERS</b>			
Total	ASEAN University Network (AUN)	2009	-
	ASEAN+3 University Network (ASEAN+3 UNet)	2012	-
	United Nations University	2005	-
	Japan International Cooperation Agency	2010	-
	United Nations Development Programme (UNDP)	2016	-
	Food and Agriculture Organization of the United Nations (FAO)	2016	-
<b>Total</b>		<b>179</b>	<b>122</b>

Many of Kyoto University's individual faculties, graduate schools, institutes, and centers also have individual cooperation and exchange agreements with institutions around the world. Details are available online at: [www.oc.kyoto-u.ac.jp/agreement/en/list](http://www.oc.kyoto-u.ac.jp/agreement/en/list)

# Double/joint degrees

## Double degrees

(As of May 1, 2018)

Country/region	University	Kyoto University's graduate school	Degree
France	Université de Bordeaux	Energy Science	Doctor
Indonesia	Institut Teknologi Bandung	Agriculture	Master
	Gadjah Mada University	Agriculture	Master
	Bogor Agricultural University	Agriculture Global Environmental Studies	Master Master
Malaysia	University of Malaya	Public Health, Medicine	Master (Professional)
		Energy Science	Master
Taiwan	National Taiwan University	Public Health, Medicine	Master (Professional)
		Management	Master (Professional)
		Agriculture	Master
Thailand	Kasetsart Univeristy	Agriculture	Master
	Chulalongkorn Univeristy	Energy Science Public Health, Medicine	Master Master (Professional)
	Mahidol University	Global Environmental Studies	Master

## Joint degrees

(As of May 1, 2018)

Country/region	University	Kyoto University's graduate school	Degree
Canada	McGill University	Medicine	Doctor
Germany	Heidelberg University	Letters	Master

# Leading education programs funded by MEXT\*

## Japan Gateway: Kyoto University Top Global Program (JGP)

(As of May 1, 2018)

### Internationally-oriented graduate education

The Top Global Program comprises a range of graduate school programs that focus on six research areas in which Kyoto University has a particularly high degree of international competitiveness. The programs are operated in partnership with leading universities around the world, offering joint guidance for study and dissertation writing, as well as joint and double degree programs.

[www.jgp.kyoto-u.ac.jp/en](http://www.jgp.kyoto-u.ac.jp/en)

### Inter-University Exchange Project

---

International Program on Resilient Society Development under Changing Climate

[www.drc.t.kyoto-u.ac.jp/rsdc/eng](http://www.drc.t.kyoto-u.ac.jp/rsdc/eng)

### Five-year interdisciplinary programs: Programs for Leading Graduate Schools

Interdisciplinary integrated master's and doctoral programs to cultivate creative and internationally-oriented students capable of playing leading roles in the world's academic, industrial, and governmental sectors.

[www.kyoto-u.ac.jp/en/research/fields/program-for-leading-graduate-schools](http://www.kyoto-u.ac.jp/en/research/fields/program-for-leading-graduate-schools)

---

Training Program of Leaders for Integrated Medical System

Collaborative Graduate Program in Design

Leading Graduate Program in Primatology and Wildlife Science

---

\*Ministry of Education, Culture, Sports, Science and Technology



# Overseas offices and facilities

## Overseas branch offices

(As of May 1, 2018)

Name	Country/region	City	Year established
European Center	Germany	Heidelberg	2014
ASEAN Center	Thailand	Bangkok	2014

## Overseas offices and facilities

(As of May 1, 2018)

Affiliation	Name	Country/region	City	Year established
Graduate School of Science	Satellite Office at Chulalongkorn University	Thailand	Bangkok	2004
	Research Base for Biodiversity of African Tropical Forest	Gabon	Libreville	2009
Astronomical Observatory, Graduate School of Science	CHAIN Peru Station	Peru	Ica	2010
Graduate School of Engineering	Kyoto University-Tsinghua University Cooperative Research and Education Center for Environmental Technology	China	Shenzhen	2005
	Global Center of Excellence Kyoto University - Institut Teknologi Bandung for GCOE Joint Research and Education Center	Indonesia	Bandung	2008
	Kyoto University-University of Malaya Overseas Base in Malaysia for Education and Research	Malaysia	Kuala Lumpur	2010
Graduate School of Agriculture	JASTIP Bioresource and Biodiversity Joint Laboratory	Indonesia	Bogor	2015
	Japanese Research-Team Laboratory, Kinabalu Park Headquarters	Malaysia	Kota Kinabalu	1995
	Japanese Research-Team Laboratory, Deramakot Forest Reserve	Malaysia	Sandakan	2003
	Overseas Office of Graduate School of Agriculture, Kyoto University at NTU	Taiwan	Taipei	2015
	Khon Kaen Research Office of the Graduate School of Agriculture, Kyoto University	Thailand	Khon Kaen	1996
	Kyoto University Research Office at Kasetsart University	Thailand	Bangkok	2014
Graduate School of Agriculture/ Graduate School of Global Environmental Studies	Kyoto University Satellite Office at Bogor Agricultural University	Indonesia	Bogor	2015
Graduate School of Asian and African Area Studies/Center for Southeast Asian Studies	Cambodia Field Station	Cambodia	Phnom Penh	2010
	Makassar Field Station	Indonesia	Makassar	2003
	Pekanbaru Field station	Indonesia	Pekanbaru	2010
	Laos Field Station	Laos	Vientiane	2002
	Myanmar Field Station	Myanmar	Yangon, Yezin	2003
Graduate School of Asian and African Area Studies/Center for African Area Studies	Cameroon Field Station	Cameroon	Ndongo Village, Yaounde	2003
	Ethiopia Field Station	Ethiopia	Addis Ababa, Jinka	2003
	Nairobi Field Station	Kenya	Nairobi	2003
	Namibia Field Station	Namibia	Windhoek	2008
	Niger Field Station	Niger	Niamey	2012
	Tanzania Field Station	Tanzania	Dar-es-Salaam	2003
	Zambia Field Station	Zambia	Lusaka	2003

Affiliation	Name	Country/region	City	Year established
Graduate School of Global Environmental Studies	Mahidol Kyoto University GSGES Office	Thailand	Bangkok	2016
	Hue Kyoto University GSGES Office	Viet Nam	Hue	2006
	Hanoi Kyoto University GSGES Office	Viet Nam	Hanoi	2008
Graduate School of Global Environmental Studies/Graduate School of Engineering	Danang Kyoto University GSGES Office	Viet Nam	Da Nang	2006
Institute of Advanced Energy	Thai Research Station Collaborative Research Laboratory	Thailand	Pathum Thani	2003
	JASTIP Energy & Environment Joint Laboratory	Thailand	Pathum Thani	2016
	JASTIP Energy & Environment Joint Laboratory	Thailand	Bangkok	2016
Research Institute for Sustainable Humanosphere	Equatorial Atmosphere Radar	Indonesia	Bukittinggi	2001
	RISH-RDUB Satellite Office	Indonesia	Bogor	2004
	MHP Acacia Research Office	Indonesia	Muara Enim	2005
	ARN Joint Laboratory/JASTIP Bioresources & Biodiversity Joint Laboratory	Indonesia	Bogor	2016
Disaster Prevention Research Institute	JASTIP Disaster Prevention Joint Laboratory	Malaysia	Kuala Lumpur	2016
	JASTIP Disaster Prevention Joint Laboratory	Viet Nam	Ho Chi Minh	2016
Primate Research Institute	Research Project on bonobos in the Luo Reserve	Democratic Republic of the Congo	Djolu	1973
	Bossou-Nimba Research Station	Guinea	Bossou	1976
	Orangutan Rehabilitation Project	Malaysia	Bukit Merah	2011
	Kalinzu Forest Research Project by the Primate Research Institute	Uganda	Bushenyi	1997
Center for Southeast Asian Studies	Jakarta Liaison Office	Indonesia	Jakarta	1970
	CSEAS Lima Office	Peru	Lima	2006
	Bangkok Liaison Office	Thailand	Bangkok	1963
	JASTIP Headquarters	Thailand	Pathum Thani	2016
Center for Ecological Research	Field Station for Tropical Forest and Biodiversity Studies	Malaysia	Miri	1991
Wildlife Research Center	Kuieiras Research Station	Brazil	Estado de Amazonas	2018*
	D/R Congo Research Station	Democratic Republic of Congo	Mbali	2016
	Ghana Research Station	Ghana	Accra	2009
	Kuala Sungai Danum Research Station	Malaysia	Danum Valley	2010
	Portugal Research Station	Portugal	Viana do Castelo	2016
	Kyoto University African Ape Expedition	Tanzania	Kigoma	1965
	African Anthropological and Biological Field Research Center	Tanzania	Arusha	2006
	Tanzania Research Station	Tanzania	Dar-es-Salaam	2014
Office of Society-Academia Collaboration for Innovation	Kyoto University Liaison Office at Tsinghua University	China	Beijing	2006
International Strategy Office/ Research Promotion Department	Kyoto University San Diego Liaison Office	United States of America	San Diego	2017

\*Established May 8, 2018

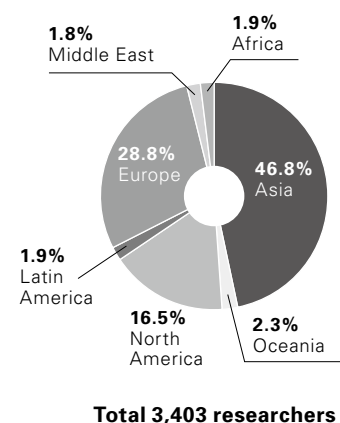
# Researchers from abroad

Academic year 2016 (Apr. 1–Mar. 31)

Country/region	Number of researchers
<b>ASIA</b>	
Bangladesh	25
Bhutan	32
Cambodia	5
China	414
India	115
Indonesia	173
Laos	4
Malaysia	60
Mongolia	4
Myanmar	62
Nepal	6
North Korea	1
Pakistan	5
Philippines	37
Republic of Korea	248
Singapore	31
Sri Lanka	10
Taiwan	167
Thailand	157
Viet Nam	37
<b>OCEANIA</b>	
Australia	65
New Zealand	12
Vanuatu	1
<b>NORTH AMERICA</b>	
Canada	96
United States of America	466
<b>LATIN AMERICA</b>	
Argentina	6
Brazil	20
Chile	11
Colombia	3
Costa Rica	1
Cuba	1
Mexico	18
Nicaragua	2
Peru	2

Country/region	Number of researchers
<b>EUROPE</b>	
Armenia	1
Austria	24
Belgium	14
Bosnia and Herzegovina	1
Bulgaria	4
Croatia	2
Czech Republic	20
Denmark	11
Estonia	1
Finland	9
Former Yugoslav Republic of Macedonia	1
France	193
Germany	184
Greece	7
Hungary	8
Iceland	2
Ireland	6
Italy	64
Kazakhstan	1
Latvia	5
Lithuania	1
Luxembourg	2
Netherlands	39
Norway	8
Poland	26
Portugal	7
Romania	6
Russia	26
Serbia	1
Slovakia	3
Slovenia	2
Spain	35
Sweden	32
Switzerland	32
Ukraine	4
United Kingdom	197
Uzbekistan	1
<b>MIDDLE EAST</b>	
Iran	16
Israel	23
Oman	3
Saudi Arabia	4
Syria	2
Turkey	12
United Arab Emirates	1

Country/region	Number of researchers
<b>AFRICA</b>	
Algeria	3
Egypt	20
Ethiopia	4
Ghana	3
Guinea	1
Kenya	4
Madagascar	6
Morocco	2
Republic of South Africa	3
Rwanda	1
Senegal	2
Sierra Leone	1
Sudan	1
Tanzania	3
Tunisia	2
Uganda	4
Zambia	1
Zimbabwe	2
<b>OTHERS</b>	
Others	2
<b>Total</b>	<b>3,403</b>



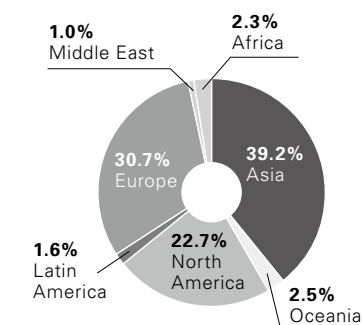
# Researchers going abroad

Academic year 2016 (Apr. 1–Mar. 31)

Country/region	Number of researchers
<b>ASIA</b>	
Bangladesh	22
Bhutan	20
Brunei	1
Cambodia	31
China	785
India	132
Indonesia	275
Laos	29
Malaysia	150
Mongolia	9
Myanmar	112
Nepal	39
Pakistan	5
Philippines	56
Republic of Korea	530
Singapore	175
Sri Lanka	39
Taiwan	376
Thailand	333
Viet Nam	170
<b>OCEANIA</b>	
Australia	144
Fiji	9
Kiribati	1
Micronesia	1
New Zealand	37
Palau	1
Papua New Guinea	1
Samoa	1
Solomon	2
Tonga	1
Vanuatu	9
<b>NORTH AMERICA</b>	
Canada	173
United States of America	1,731
<b>LATIN AMERICA</b>	
Argentina	9
Bolivia	1
Brazil	43
Chile	23
Colombia	1
Costa Rica	2
Cuba	2
Ecuador	1
Mexico	30
Panama	2
Peru	16
Uruguay	2
Venezuela	1

Country/region	Number of researchers
<b>EUROPE</b>	
Armenia	3
Austria	137
Belarus	1
Belgium	36
Bosnia and Herzegovina	4
Bulgaria	5
Croatia	14
Czech Republic	41
Denmark	49
Estonia	4
Finland	46
France	462
Georgia	3
Germany	473
Greece	35
Hungary	31
Iceland	3
Ireland	26
Italy	162
Kazakhstan	6
Kyrgyz Republic	6
Latvia	3
Lithuania	5
Luxembourg	2
Malta	1
Montenegro	1
Netherlands	107
Norway	30
Poland	69
Portugal	49
Romania	2
Russia	33
Slovakia	1
Slovenia	10
Spain	126
Sweden	63
Switzerland	127
Tajikistan	1
Ukraine	1
United Kingdom	395
Uzbekistan	6
<b>MIDDLE EAST</b>	
Bahrain	3
Iran	16
Israel	15
Jordan	8
Kuwait	1
Qatar	1
Saudi Arabia	1

Country/region	Number of researchers
Turkey	21
United Arab Emirates	18
<b>AFRICA</b>	
Angola	1
Botswana	3
Cameroon	17
Democratic Republic of the Congo	4
Egypt	13
Ethiopia	12
Gabon	1
Ghana	9
Guinea	6
Kenya	22
Madagascar	9
Malawi	1
Morocco	4
Namibia	7
Niger	4
Republic of Congo	6
Republic of South Africa	16
Rwanda	2
Sudan	1
Tanzania	33
Uganda	22
Zambia	2
Zimbabwe	1
<b>OTHERS</b>	
Others	8
<b>Total</b>	<b>8,400</b>



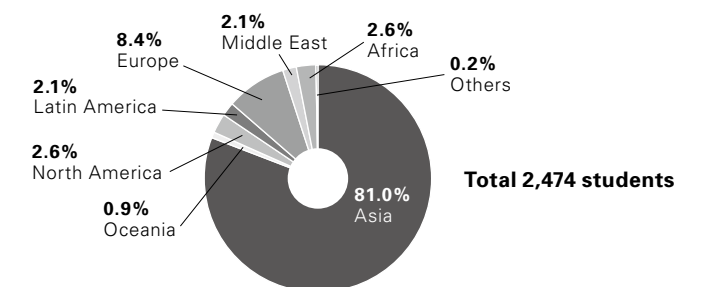
# Students from abroad

(As of May 1, 2018)

Country/region	Undergraduates		Graduate students				Other*	Total
	Under-graduates	Non-regular students	Master's course	Doctoral course	Professional course	Non-regular students		
<b>ASIA</b>								
Bangladesh			4	24		2		30
Brunei		3		1				4
Cambodia			6	5		2		13
China	125	76	463	387	61	81	19	1,212
India	2	2	4	32	1	2	7	50
Indonesia	11	8	44	47	5	6	5	126
Laos	1		1	2				4
Malaysia		1	7	25		1	1	35
Mongolia	5	2		4		2		13
Myanmar			6	20		2	2	30
Nepal			2	7		2		11
Pakistan				4			1	5
Philippines	1	3	1	8	1	1	1	16
Republic of Korea	59	15	43	70	13	8	8	216
Singapore	2	10		3	1			16
Sri Lanka				4	1			5
Taiwan	3	12	37	51	8	9	1	121
Thailand	8	7	14	24		2	2	57
Timor-Leste							1	1
Viet Nam	5	1	5	23		3	2	39
<b>OCEANIA</b>								
Australia	2	5		2			1	10
Fiji			3					3
New Zealand			1	4	1		1	7
Papua New Guinea			1					1
Samoa			1					1
Solomon			1					1
<b>NORTH AMERICA</b>								
Canada	1	3	2	5	1	3	5	20
United States of America		11	15	11		3	5	45
<b>LATIN AMERICA</b>								
Argentina	1		2				2	5
Bolivia				1				1
Brazil	3	1	4	4		1	3	16
Chile		1		1			1	3
Colombia			1	1				2
Costa Rica		1	2					3
Dominican Republic			1					1
Grenada				1				1
Mexico		2	2	1	1			6
Panama				1				1
Paraguay				1				1
Peru			2	5		1	1	9
Uruguay			1	1				2
<b>EUROPE</b>								
Albania					1			1
Austria		1		2				3
Azerbaijan						1	1	2
Belgium			1	1		2		4
Bulgaria				2				2
Croatia				1				1
Denmark						1		1
Estonia				2			1	3
Finland		1		1				2
Former Yugoslav Republic of Macedonia					1			1
France		16	1	7		10	6	40
Georgia				1				1
Germany		3	4	6		16	1	30
Greece			1				1	2
Hungary			1	3			1	5
Iceland		1						1
Ireland			1	1				2
Italy		2		6		5	1	14
Kazakhstan	1			3		1		5
Kosovo			1					1

Country/region	Undergraduates		Graduate students			Other*	Total	
	Under-graduates	Non-regular students	Master's course	Doctoral course	Professional course			
Kyrgyz Republic					1	1	2	
Latvia			2				2	
Lithuania			1	1		1	3	
Luxembourg			2				2	
Netherlands	1	4	1	1		1	8	
Norway						4	4	
Poland				1			1	
Portugal				2			2	
Romania		1		2		1	4	
Russia	1	3	5	3	1	2	17	
Slovenia	1						1	
Spain		3	1	2		1	8	
Sweden		3	1			1	5	
Switzerland		2		3		1	6	
Ukraine	1		1	1		1	4	
United Kingdom		9	1	2		2	16	
Uzbekistan			1	1			2	
<b>MIDDLE EAST</b>								
Afghanistan		1	1	3	1		6	
Iran		1	2	10		1	14	
Israel		1	1	2	1	1	6	
Kuwait				1		1	2	
Lebanon		1		3			4	
Oman			1	1			2	
Palestine			1	4			5	
Turkey	1	1	2	8			12	
<b>AFRICA</b>								
Angola					1		1	
Benin			1				1	
Botswana				1		1	2	
Burkina Faso			1				1	
Cameroon			2			1	3	
Democratic Republic of the Congo			1	2			3	
Egypt	5		2	6			13	
Ethiopia				2			2	
Guinea				2	1		3	
Kenya			5	4			9	
Liberia			1				1	
Madagascar			1	1			2	
Malawi			1				1	
Mali						1	1	
Mauritania					1	1	2	
Morocco			1			1	2	
Mozambique			2				2	
Nigeria			1	1			2	
Republic of South Africa				1			1	
Senegal			1				1	
Sudan			1	2		1	4	
Tanzania				1			1	
Tunisia				1			1	
Uganda			2	1		1	4	
Zambia			1				1	
Zimbabwe			1				1	
<b>OTHERS</b>								
Others		5	1					6
<b>Total</b>	<b>240</b>	<b>223</b>	<b>736</b>	<b>892</b>	<b>103</b>	<b>183</b>	<b>97</b>	<b>2,474</b>

\*Research centers and other academic facilities



# Students going abroad

Academic year 2017 (Apr. 1–Mar. 31)

Country/region	Under-graduates	Master's course	Doctoral course	Professional course	Non-regular students	Total
<b>ASIA</b>						
Bangladesh			2			2
Bhutan	8		3	2		13
Cambodia	3	5	5			13
China	60	65	106	2	8	241
India	2	11	29	2	1	45
Indonesia	11	57	57	1	2	128
Laos	1	2	9			12
Malaysia	5	25	38			68
Mongolia	2	2	8			12
Myanmar	7	16	39			62
Nepal	1	3	21			25
Pakistan		1	7			8
Philippines	6	8	16			30
Republic of Korea	13	61	71		1	146
Singapore	11	20	19			50
Sri Lanka		2	6			8
Taiwan	23	102	65	22	1	213
Thailand	57	57	60	3	4	181
Timor-Leste			1			1
Viet Nam	20	29	41	3		93
<b>OCEANIA</b>						
Australia	30	19	24			73
Fiji	1	1	4		2	8
French Polynesia (Tahiti)		1				1
Marshall		1				1
New Zealand	15	7	7			29
Palau	1					1
Papua New Guinea		1				1
Samoa		2				2
Solomon		1	1			2
Vanuatu		2	1			3
<b>NORTH AMERICA</b>						
Canada	32	12	37			81
United States of America	108	115	195	7	1	426
<b>LATIN AMERICA</b>						
Argentina			1			1
Brazil	1		3			4
Chile		2	1			3
Colombia			3			3
Cuba			1			1
Mexico	1	2	10			13
<b>EUROPE</b>						
Albania		1		1	1	3
Austria	1	8	15	1		25
Belgium	3	4	11	1		19
Bulgaria			1			1
Croatia		1	3			4
Czech Republic		5	13	2		20
Denmark		3	6			9
Estonia		1	2			3
Finland	1	5	1			7
Former Yugoslav Republic of Macedonia		1				1
France	19	26	50	15		110
Germany	22	43	83	15	1	164
Greece			1			1
Hungary		3	4			7
Iceland	1	1	7			9
Ireland	3	2	5			10
Italy	4	18	22			44
Kazakhstan		1				1
Kyrgyz Republic		1	1			2
Luxembourg	1					1
Malta		1				1
Netherlands	6	9	18			33
Norway		1	2			3

Country/region	Under-graduates	Master's course	Doctoral course	Professional course	Non-regular students	Total
Poland		1	5			6
Portugal	1	5	10	1		17
Russia	2	2	10			14
Slovenia			1			1
Spain	3	8	17			28
Sweden	6	2	18			26
Switzerland	5	16	30			51
United Kingdom	50	18	53	14		135
Uzbekistan		1	2			3
<b>MIDDLE EAST</b>						
Afghanistan		1	1			2
Iran			1			1
Israel		1	2	1		4
Jordan			4			4
Kuwait	1					1
Lebanon			1			1
Oman		1	2			3
Turkey	1		10			11
United Arab Emirates			3			3
<b>AFRICA</b>						
Benin			2			2
Botswana			1			1
Cameroon			3			3
Democratic Republic of the Congo			5			5
Egypt			2			2
Ethiopia	1	1	13			15
Gabon		1	2			3
Ghana				1		1
Guinea	1		4			5
Kenya		2	5			7
Madagascar			2			2
Malawi		4	1			5
Mozambique		1	1			2
Namibia		1	2			3
Niger			1			1
Republic of South Africa		1	3			4
Rwanda	1		1	1		3
Senegal		1	2			3
Seychelles			1			1
Sudan		1	1			2
Tanzania	4	9	17	1		31
Togo		1				1
Tunisia			1			1
Uganda	1	4	13		1	19
<b>Total</b>	<b>557</b>	<b>850</b>	<b>1,389</b>	<b>96</b>	<b>23</b>	<b>2,915</b>

