

Information for International Students and Researchers

//////////

Admission for International Students

International students at Kyoto University are categorized as either “degree-seeking” students or “non-degree seeking” students. Undergraduate and graduate students are categorized as degree-seeking students, while research students, exchange students, and short-term international students are classified as non-degree seeking students. Either category of students may enroll as Japanese Government (MEXT) Scholarship students or privately financed international students. Generally, classes are provided entirely in Japanese unless specified otherwise. Those seeking to enroll in an English-taught degree program should refer to page 38* and contact the relevant administration office.

For further details of admission procedures, please refer to the website for prospective international students, *Why Kyoto University?*, at: www.opir.kyoto-u.ac.jp/study/en/



Tuition Exemption and Scholarships

Every year, approximately fifty scholarships for privately financed international students are available through the university. The scholarships are offered by various different organizations and range from approximately ¥30,000 to ¥180,000 per month. Applications are generally accepted following admission to the university. In addition, degree-seeking students who experience financial difficulty while maintaining excellent academic records may be eligible for a full or a half tuition waiver.



Tuition and Fees

(As of April 2016)

		Exam Fee	Admission Fee	Tuition
Degree-seeking students	Undergraduate Students	¥17,000	¥282,000	¥535,800 per year
	Graduate Students	¥30,000*	¥282,000	¥535,800 per year
	Law School Students	¥30,000	¥282,000	¥804,000 per year
Non-degree seeking students	Research Students	¥9,800	¥84,600	¥29,700 per month

*In certain circumstances, the exam fee for degree-seeking graduate students may be reduced to ¥10,000 for applicants who are screened based on submitted materials etc. with no written examination. For specific details, please check the admission guidelines of the graduate school you wish to enter.

Details on scholarships are also available from:
JASSO: *Scholarships for Study in Japan*
www.jasso.go.jp/en/study_j/scholarships/index.html

KU Web: *Admissions Guide for International Applicants > Scholarships*
www.kyoto-u.ac.jp/en/education-campus/international/students1/scholarship.html

Japanese Language Education

The Education Center for Japanese Language and Culture offers Japanese language classes for international students and researchers at Kyoto University. The classes aim to help students and researchers acquire language skills for daily life in Japan and for academic activities. Kyoto University does not have an independent faculty for Japanese language study.

Further details are available at: www.ryugaku.kyoto-u.ac.jp/en/japanese-e



Kyoto University International Houses

Kyoto University has five housing facilities for international researchers and students, located at Shugakuin, Yoshida, Uji, Ohbaku and Misasagi. The Misasagi International House is a student-only facility.

For international researchers:

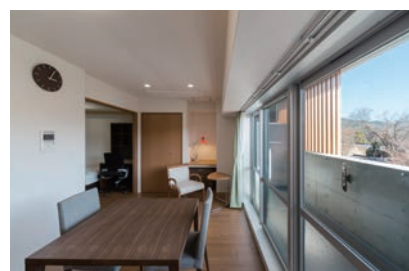
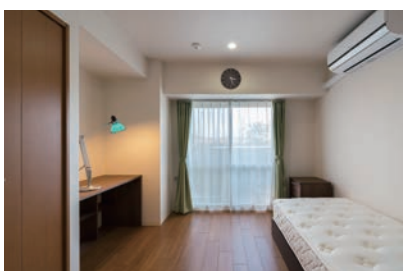
Applications for accommodation in the International Houses must be made at least four months in advance of the intended move-in month, and must be made through the researcher's host professor or a staff member of the department to which the researcher belongs. The tenancy period for researchers should not be less than one month, nor exceed one year. Extensions will not be granted. Please consult with your host professor to arrange accommodation in Japan prior to arrival.

For international students:

The move-in periods for the International Houses are April and October. Applications are accepted in January and July (three months prior to move-in). The tenancy period for students is either one year or six months, and may not be extended in either case. Those who wish to apply should make arrangements with their faculty/graduate school offices in advance.

Further details are available at: www.opir.kyoto-u.ac.jp/en/kuiso/admission/

_Yoshida International House



_Ohbaku International House



_Misasagi International House

