

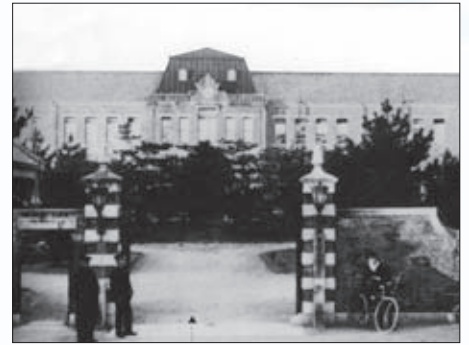
KYOTO UNIVERSITY THROUGH THE YEARS



The Seimikyoku was established in Osaka as a school of higher learning in chemistry and physics.



Known at this point as the Third High School, the institution was relocated to Kyoto in August 1889.



The Third High School was subsequently relocated once again, and Kyoto Imperial University was established at its former location on June 18, 1897. The main gates, built at that time remain in use today. Over one-hundred years later, in 1949, the Third High School was incorporated into Kyoto University.

1869

1889

1897

2015

1900

1928

1962

1970



Kyoto University's first graduates assembled in front of the library.



Students standing in front of the Clock Tower and the first camphor tree. The current camphor tree was planted in 1934 after the first tree was destroyed by a typhoon.



Cafeteria in the basement of the clock tower.



Student parade during the annual November Festival.