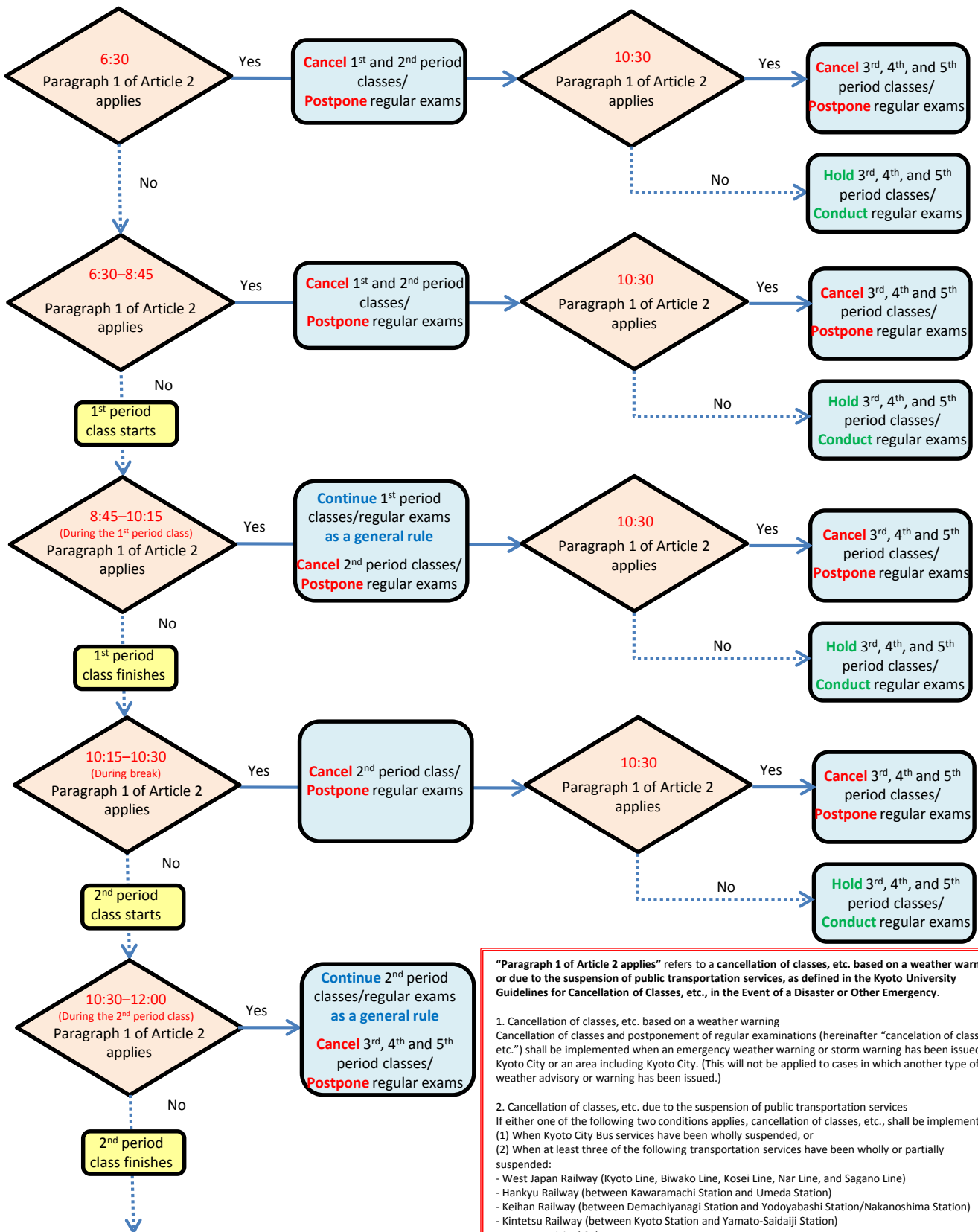
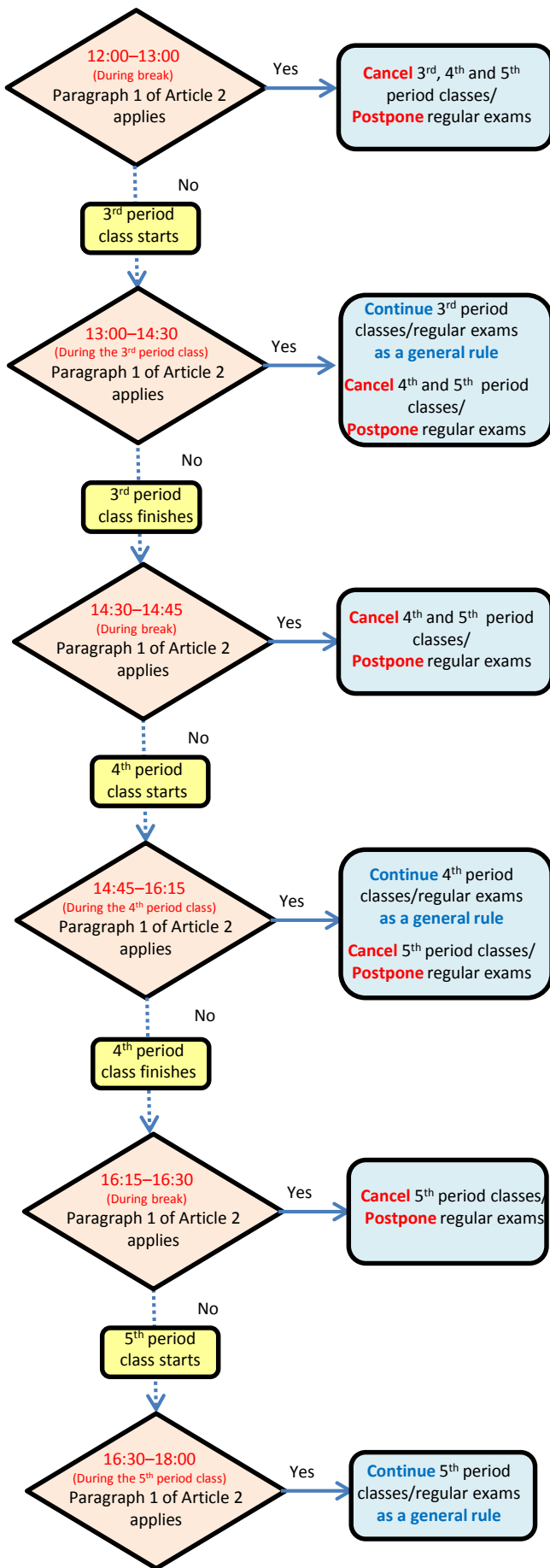


Cancellation of classes etc. due to a weather warning or suspension of public transportation services



“Paragraph 1 of Article 2 applies” refers to a cancellation of classes, etc. based on a weather warning or due to the suspension of public transportation services, as defined in the Kyoto University Guidelines for Cancellation of Classes, etc., in the Event of a Disaster or Other Emergency.

1. Cancellation of classes, etc. based on a weather warning
Cancellation of classes and postponement of regular examinations (hereinafter “cancellation of classes, etc.”) shall be implemented when an emergency weather warning or storm warning has been issued in Kyoto City or an area including Kyoto City. (This will not be applied to cases in which another type of weather advisory or warning has been issued.)
2. Cancellation of classes, etc. due to the suspension of public transportation services
If either one of the following two conditions applies, cancellation of classes, etc., shall be implemented.
 - (1) When Kyoto City Bus services have been wholly suspended, or
 - (2) When at least three of the following transportation services have been wholly or partially suspended:
 - West Japan Railway (Kyoto Line, Biwako Line, Kosei Line, Nar Line, and Sagano Line)
 - Hankyu Railway (between Kawaramachi Station and Umeda Station)
 - Keihan Railway (between Demachiyagani Station and Yodoyabashi Station/Nakanoshima Station)
 - Kintetsu Railway (between Kyoto Station and Yamato-Saidaiji Station)
 - Kyoto Municipal Subway



“Paragraph 1 of Article 2 applies” refers to a cancellation of classes, etc. based on a weather warning or due to the suspension of public transportation services, as defined in the Kyoto University Guidelines for Cancellation of Classes, etc., in the Event of a Disaster or Other Emergency.

1. Cancellation of classes, etc. based on a weather warning
Cancellation of classes and postponement of regular examinations (hereinafter “cancellation of classes, etc.”) shall be implemented when an emergency weather warning or storm warning has been issued in Kyoto City or an area including Kyoto City. (This will not be applied to cases in which another type of weather advisory or warning has been issued.)
2. Cancellation of classes, etc. due to the suspension of public transportation services
If either one of the following two conditions applies, cancellation of classes, etc., shall be implemented.
 - (1) When Kyoto City Bus services have been wholly suspended, or
 - (2) When at least three of the following transportation services have been wholly or partially suspended:
 - West Japan Railway (Kyoto Line, Biwako Line, Kosei Line, Nar Line, and Sagano Line)
 - Hankyu Railway (between Kawaramachi Station and Umeda Station)
 - Keihan Railway (between Demachiyonagi Station and Yodoyabashi Station/Nakanoshima Station)
 - Kintetsu Railway (between Kyoto Station and Yamato-Saidaiji Station)
 - Kyoto Municipal Subway

Note: If any of the cases set forth in Paragraph 1 of Article 2 apply after classes or regular examinations have begun, the classes or examinations will be continued as a general rule. However, if the executive vice-president in charge deems it necessary to secure the safety of students, the classes or examinations must be cancelled even if they are already underway.