

KYOTO UNIVERSITY

FACTS AND FIGURES

2014



CONTENTS

Chronological Table	1
Organization Chart	4
Staff and Students	5
Finance	6
University Facilities	9
Industry-Academia Collaboration	10
Academic Exchange Memoranda	11
Kyoto University International Symposia	14
Researchers From Abroad	15
Researchers Going Abroad	16
Students From Abroad	17
Students Going Abroad	19
List of Overseas Offices and Facilities	21

CHRONOLOGICAL TABLE

Year	Contents
1897	Founded as Kyoto Imperial University. College of Science and Engineering established.
1899	Colleges of Law and Medicine established. University Library and University Hospital established.
1906	College of Letters established.
1914	College of Science and Engineering divided into College of Science and College of Engineering.
1919	Colleges reorganized into five faculties under the new University Ordinance. Faculty of Economics established.
1923	Faculty of Agriculture established.
1926	Institute for Chemical Research established.
1939	Institute for Research in Humanities established.
1941	Chest Disease Research Institute and Institute of Atomic Energy established.
1944	Wood Research Institute established.
1946	Research Institute for Food Science established.
1947	Renamed KYOTO UNIVERSITY.
1949	Reorganized on four-year schooling basis (with the exception of six years for medicine) under the new education system. Faculty of Education established. Branch School established for general education of freshmen and sophomores.
1951	Disaster Prevention Research Institute established.
1953	Graduate courses under the new system opened. Yukawa Institute for Theoretical Physics established.
1954	Branch School renamed College of Liberal Arts and Sciences.
1956	Institute for Virus Research established.
1960	Faculty of Pharmaceutical Sciences established.
1962	Institute of Economic Research established.
1963	Research Institute for Mathematical Sciences and Research Reactor Institute established.
1965	Center for Southeast Asian Studies established.
1966	Center for Student Health established.
1967	Primate Research Institute established.
1969	Data Processing Center established.
1971	Radioisotope Research Center established.
1972	Research Center for Sports Science established.
1975	College of Medical Technology established.
1976	Plasma Physics Laboratory and Radiation Biology Center established.
1977	Environment Preservation Center and Center for Archaeological Operations established.



Year	Contents
1978	Educational Center for Information Processing established.
1980	Research Center for Biomedical Engineering established.
1981	Radio Atmospheric Science Center established.
1986	Center for African Area Studies established.
1988	Center for Molecular Biology and Genetics established.
1990	Center for Student Exchange established.
1991	Graduate School of Human and Environmental Studies and Center for Ecological Research established.
1992	College of Liberal Arts and Sciences reorganized and renamed Faculty of Integrated Human Studies.
1994	Research Center for Higher Education established.
1995	Venture Business Laboratory established.
1996	Graduate School of Energy Science established. Institute of Atomic Energy and Plasma Physics Laboratory merged into Institute of Advance Energy. Student Counseling Center was established.
1997	The Kyoto University Museum established. Educational Center for Information Processing reorganized and renamed Center for Information and Multimedia Studies.
1998	Graduate School of Asian and African Area Studies and Graduate School of Informatics established. Chest Disease Research Institute reorganized and renamed Institute for Frontier Medical Sciences. Research Center for Biomedical Engineering closed.
1999	Graduate School of Biostudies and Counseling Center established. Student Counseling Center closed.
2000	Radio Atmospheric Science Center reorganized and renamed Radio Science Center for Space and Atmosphere. University Archives established.
2001	International Innovation Center established. Research Institute for Food Science closed. Center for Data Collection and Analysis established.
2002	Graduate School of Global Environmental Studies established. Center for Data Processing and Center for Information and Multimedia Studies reorganized and renamed Academic Center for Computing and Multimedia Studies. Research Center for Low Temperature and Materials Sciences and Fukui Institute for Fundamental Chemistry established.
2003	Research Center for Sports Science closed. Seto Marine Biological Laboratory, University Forest, Subtropical Plant Institute and Fisheries Research Station merged into Field Science Education and Research Center. Research Center for Higher Education reorganized and renamed Center for the Promotion of Excellence in Higher Education. Institute for the Promotion of Excellence in Higher Education and Law School established. College of Medical Technology merged into Graduate School of Medicine.
2004	Kyoto University incorporated in accordance with the National University Corporation Law.
	Wood Research Institute and Radio Science Center for Space and Atmosphere unified as Research Institute for Sustainable Humanosphere. Center for Southeast Asian Studies given institute status. Center for Molecular Biology and Genetics and Center for Data Collection and Analysis closed.

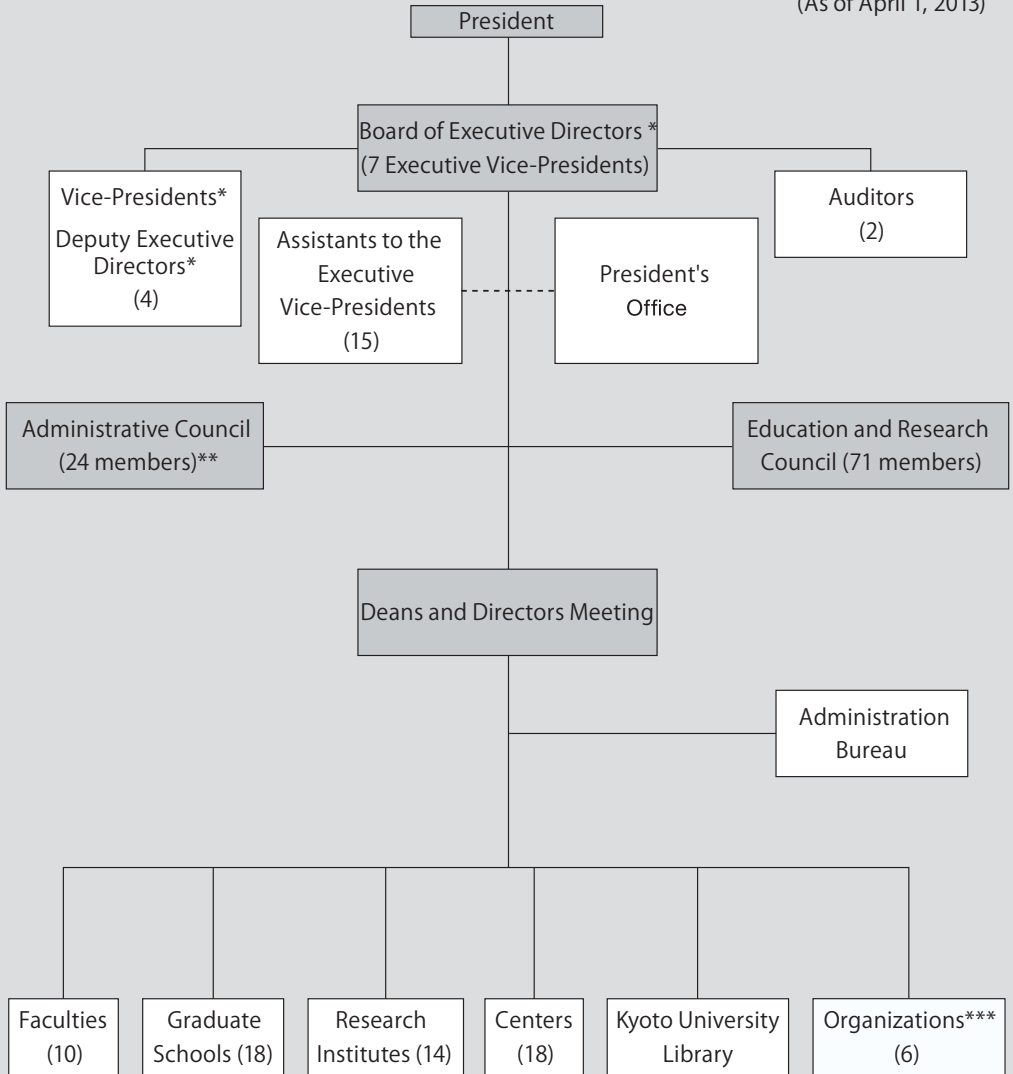


Year	Contents
2005	The Organization for the Promotion of International Relations, Environment, Safety, and Health Organization, International Innovation Organization, Institute for Information Management and Communication, and Library Network established. Center for Student Exchange reorganized and renamed The International Center.
2006	School of Government established. Graduate School of Management established. Center for Integrated Area Studies established. Nano Medicine Merger Education Unit established. Institute of Sustainability Science established. Kyoto University Pioneering Research Unit for Next Generation established. Center for Women Researchers established.
2007	Kokoro Research Center established. Advanced Medical Engineering Research Unit established. Career-Path Promotion Unit for Young Life Scientists established. College of Medical Technology closed. International Innovation Organization reorganized and renamed Kyoto University Office of Society-Academia Collaboration for Innovation. International Innovation Center reorganized and renamed Innovative Collaboration Center. Institute for Integrated Cell-Material Sciences established.
2008	Wildlife Research Center established. Center for Archaeological Operations reorganized and renamed Center for Cultural Heritage Studies. Unit of Synergetic Studies for Space established. Education Unit for Global Leaders in Advanced Engineering and Pharmaceutical Science established.
2009	Young Researcher Development Center established.
2010	Center for the Promotion of Interdisciplinary Education and Research established. Center for iPS Cell Research and Application established. Innovative Collaboration Center closed (merged with Office of Society-Academia Collaboration for Innovation). Nano Medicine Merger Education Unit closed. Advanced Medical Engineering Research Unit closed. Career-Path Promotion Unit for Young Life Scientists closed. Micro/Nano Fabrication Hub in Kyoto Univ. established.
2011	Radioisotope Research Center closed (merged with Environment, Safety, and Health Organization). Environment Preservation Center closed (merged with Environment, Safety, and Health Organization). The International Center closed (merged with The Organization for the Promotion of International Relations). Center for Student Health closed (merged with Environment, Safety, and Health Organization) Institute of Sustainability Science closed. Kyoto University Pioneering Research Unit for Next Generation closed.
2012	Young Researcher Development Center renamed the Hakubi Center for Advanced Research.
2013	Graduate School of Advanced Integrated Studies in Human Survivability established. Institute for the Promotion of Excellence in Higher Education closed. Institute for Liberal Arts and Sciences established. Education Unit for Global Leaders in Advanced Engineering and Pharmaceutical Sciences closed. Unit of Synergetic Studies for Space closed.



ORGANIZATION CHART

(As of April 1, 2013)



* Each of the (Executive) Vice-Presidents and Deputy Executive Directors are in charge of a different area of university affairs.

** 24 members, 12 of whom are Kyoto University faculty and staff.

*** Including the Organization for the Promotion of International Relations.



STAFF AND STUDENTS

UNIVERSITY STAFF (As of May 1, 2013)

Position	Number
President	1
Executive Directors	7
Auditors	2
Professors	1,018
Associate Professors	741
Senior Lecturers	164
Assistant Professors	850
Sub-Total	2,783
Non-teaching Staff	2,647
Specialist Staff	4
Total	5,434

ENROLLMENT

(As of May 1 of each year)

Academic Year	Undergraduate	Graduates	Total
2013	13,585	9,323	22,908
2012	13,551	9,244	22,795
2011	13,537	9,282	22,819
2010	13,473	9,314	22,787
2009	13,417	9,319	22,736

NUMBER OF GRADUATES

Academic Year	Undergraduates	Graduates		Total
		Master's Course	Doctoral Course	
2012	2,901	2,134	735	5,770
2011	2,893	2,171	780	5,844
2010	2,842	2,188	688	5,718
2009	2,825	2,170	755	5,750
2008	2,866	2,143	783	5,792

NUMBER OF DEGREES CONFERRED

Academic Year	Master's Degree	Doctoral Degree
		New System
2012	2,134	822
2011	2,171	891
2010	2,188	776
2009	2,170	870
2008	2,143	910

Note: Doctoral Degree Old System (1897-1957) Total 9,651

NUMBER OF PROFESSIONAL DEGREES CONFERRED

Academic Year	Graduates	
2012	Law School	160
	School of Public Health	28
	School of Government	38
	Graduate School of Management	79
2011	Law School	164
	School of Public Health	28
	School of Government	38
	Graduate School of Management	83
2010	Law School	202
	School of Public Health	28
	School of Government	50
	Graduate School of Management	66
2009	Law School	192
	School of Public Health	38
	School of Government	42
	Graduate School of Management	71



FINANCE

Consolidated Revenues and Expenses in Net Assets

The following charts show Kyoto University's total revenues and expenses for the 2012 fiscal year. They also identify the major components of these revenues and expenses. Kyoto University has several revenue sources, the largest of which are university administration grants. The largest expense is the instruction and research. All other expenses are incurred in supporting instruction and research and in funding Kyoto University's public service activities.

Revenues in FY 2012

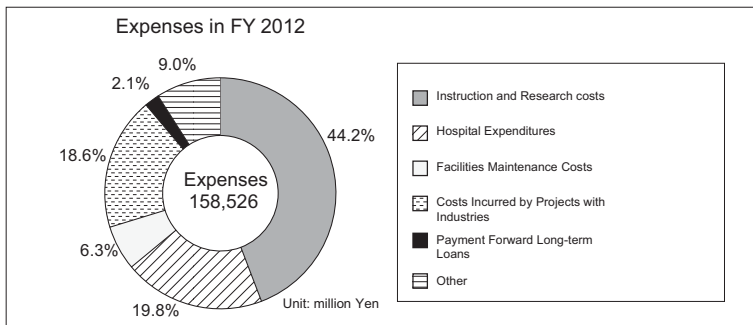
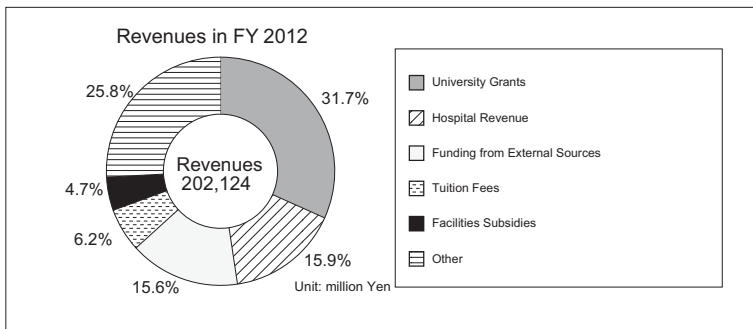
Unit: million yen million US \$ (1 = ¥94.05*)

University Grants	64,077	681.31	31.7%
Hospital Revenue	32,199	342.36	15.9%
Funding from External Sources	31,604	336.03	15.6%
Tuition Fees	12,514	133.06	6.2%
Facilities Subsidies	9,529	101.32	4.7%
Other	52,201	555.03	25.8%
Total	202,124	2,149.11	

Expenses in FY 2012

Unit: million yen million US \$ (1 = ¥94.05*)

Instruction and Research costs	70,079	745.12	44.2%
Hospital Expenditures	31,345	333.28	19.8%
Facilities Maintenance Costs	9,975	106.06	6.3%
Costs Incurred by Projects with Industries	29,497	313.63	18.6%
Payment Forward Long-term Loans	3,300	35.09	2.1%
Other	14,330	152.37	9.0%
Total	158,526	1,685.55	



Assets	Category	Unit: million yen	million US \$ (1 = ¥94.05*)
	Fixed assets	408,798	4,346.60
	Land	166,584	1,771.23
	Buildings	224,815	2,390.38
	Accumulated depreciation	▲ 82,536	▲ 877.58
	Structures	17,674	187.92
	Accumulated depreciation	▲ 6,891	▲ 73.27
	Accumulated impairment loss	▲ 1	▲ 0.01
	Equipment & furnishings	118,124	1,255.97
	Accumulated depreciation	▲ 82,194	▲ 873.94
	Books	33,317	354.25
	Art & other valuables	779	8.28
	Construction in progress	4,508	47.93
	Patents	204	2.17
	Leaseholds	1,259	13.39
	Software	93	0.99
	Investment securities	9,585	101.91
	Long-term savings	2,600	27.64
	Other fixed assets	878	9.34
	Current assets	87,736	932.87
	Cash & bank savings	53,980	573.95
	Accounts receivable of student payments	250	2.66
	Reserve for uncollectable payments	▲ 71	▲ 0.75
	Accounts receivable of hospital revenue	7,027	74.72
	Reserve for uncollectable payments	▲ 304	▲ 3.23
	Accrued revenue	4,169	44.33
	Marketable securities	21,000	223.29
	Inventories	68	0.72
	Medicine & supplies	843	8.96
	Other current assets	771	8.20
	Total assets	496,534	5,279.47

* Calculations based on the exchange rate of 28 March 2013.



Liabilities	Category	Unit: million yen million US \$ (1 = ¥94.05*)	
	Fixed liabilities	107,067	1,138.41
	Contra accounts for services & assets	82,228	874.30
	Long-term balance of donations	131	1.39
	Long-term loans payable to the Center for National University Finance and Management	11,533	122.63
	Long-term loans payable	2,756	29.30
	Long-term accrued amount payable	10,283	109.34
	Decommissioning liabilities	5	0.05
	Other fixed liabilities	131	1.39
	Current liabilities	69,916	743.39
	Grants for administrative services carry over	12,971	137.92
	Balance of donations	16,322	173.55
	Funds for research & other entrusted activities	5,865	62.36
	Current portion of loans payable to the Center for National University Finance and Management	2,218	23.58
	Current portion of long-term loans payable	466	4.95
	Accrued amount payable	22,879	243.26
	Decommissioning liabilities	1	0.01
	Other current liabilities	9,194	97.76
	Total liabilities	176,983	1,881.80

Net Assets	Category	Unit: million yen million US \$ (1 = ¥94.05*)	
	Capital	273,709	2,910.25
	National government investments	273,709	2,910.25
	Capital surplus	19,353	205.77
	Capital surplus	96,793	1,029.17
	Accumulated depreciation charged to capital surplus	▲ 77,431	▲ 823.30
	Accumulated impairment loss charged to capital surplus	▲ 8	▲ 0.09
	Retained earnings	26,487	281.63
	Carried forward accumulated reserve	22,159	235.61
	Unappropriated retained earnings	1,658	17.63
	Net assets	319,550	3,397.66
	Total liabilities & net assets	496,534	5,279.47

Statement of Income 2012 Fiscal Year

Ordinary Expenses	Category	Unit: million yen million US \$ (1 = ¥94.05*)	
	Operating expenses	139,388	1,482.06
	Education expenses	6,899	73.35
	Research expenses	24,073	255.96
	Expenses for medical practice	20,337	216.24
	Support for education & research	2,885	30.68
	Expenses for entrusted activities	19,365	205.90
	Personnel expenses	64,984	690.95
	Management costs	4,195	44.60
	Finance costs	820	8.72
	Miscellaneous losses	7	0.07
	Total ordinary expenses	144,459	1,535.98

Ordinary Revenues	Category	Unit: million yen million US \$ (1 = ¥94.05*)	
	Revenue from grants for administrative services	52,008	552.98
	Revenues from tuition and fees	12,170	129.40
	Hospital revenues	32,469	345.23
	Revenues from entrusted activities	20,275	215.58
	Revenues from donations	4,337	46.11
	Contra account for services & assets	9,295	98.83
	Other revenues	16,106	171.25

Total ordinary revenues	146,664	1,559.43
--------------------------------	----------------	-----------------

Ordinary profit	2,204	23.43
Extraordinary loss	1063	11.30
Extraordinary income	67	0.71
Withdrawals from the accumulated reserve for education & research	449	4.77

Total income for the year	1,658	17.63
----------------------------------	--------------	--------------

University Facilities

Library Collection

As of March 31, 2013

	Number of Books			Number of Magazines and Periodicals		
	Japanese	International	Total	Japanese	International	Total
Main University Library	636,662	258,237	894,899	14,344	9,713	24,057
Other University Libraries and Reference Rooms	2,852,610	2,950,279	5,802,889	45,741	45,999	91,740
Combined Total	3,489,272	3,208,516	6,697,788	60,085	55,712	115,797

Number of Visitors to the Kyoto University Museum

	Individuals	Groups	Paying Visitors	Non-Paying Visitors	Total
2012	18,439	1,218	19,657	36,106	55,763
2011	14,400	1,036	15,436	26,829	42,265
2010	20,840	1,030	21,870	30,358	52,228
2009	13,843	916	14,759	20,243	35,002
2008	14,487	662	15,149	22,029	37,178
2007	15,351	1,300	16,651	19,419	36,070

Number of Visitors to the Seto Marine Biological Laboratory Aquarium

	Individuals	Groups	Paying Visitors	Non-Paying Visitors	Total
2012	59,084	2,658	61,742	7,315	69,057
2011	54,806	2,696	57,502	6,656	64,158
2010	54,608	2,942	57,550	7,076	64,626
2009	52,483	2,621	55,104	7,581	62,685
2008	55,910	3,227	59,137	7,274	66,411
2007	56,725	2,316	59,041	6,722	65,763
2006	52,265	2,759	55,024	6,389	61,413
2005	52,966	2,726	55,692	2,600	58,292

Kyoto University Hospital

2012

Number of Beds	Number of Inpatients	Number of Outpatients
1,121	356,990	681,766



INDUSTRY-ACADEMIA COLLABORATION

Invention Disclosure

FY	Number of Invention Disclosure Forms Submitted
2012	443
2011	412
2010	396
2009	405
2008	405
2007	390
2006	392
2005	454

Fiscal Year (FY) : April 1 - March 31

Patent

FY	DOMESTIC		FOREIGN	
	Number of Patent Applications	Number of Patents Issued	Number of Patent Applications ¹	Number of Patents Issued
2012	273(187)	132(98)	313(192)	75(43)
2011	237(174)	109(80)	298(196)	79(23)
2010	230(169)	68(38)	261(150)	41(25)
2009	231(166)	45(21)	224(107)	37(17)
2008	219(154)	22(10)	221(99)	26(18)
2007	185(135)	20(12)	240(137)	9(8)
2006	275(184)	14(7)	239(130)	9(6)
2005	316(170)	14(2)	218(116)	0(0)
Total		481(285)		292(158)

Fiscal Year (FY): April 1 - March 31

The Number of joint applications or co-owned patents is shown in brackets

¹ Applications under the PCT etc., count as 1 regardless of the number of designated countries.

Exploitation of Intellectual Property

FY	PATENTS		COPYRIGHTS ¹		RESEARCH MATERIALS		TOTAL
	Number of Licenses ²	Revenue ³	Number of Licenses ²	Revenue ³	Number of Licenses ²	Revenue ³	Revenue ³
2012	115	191,144	16	9,965	32	53,217	254,326
2011	101	184,594	14	4,172	25	18,801	207,567
2010	59	154,575	6	2,182	28	15,865	172,622
2009	58	65,432	8	3,675	46	23,917	93,024
2008	47	48,424	7	6,812	38	47,217	102,453
2007	34	23,694	7	12,904	15	19,242	55,840
2006	19	17,002	7	6,453	1	10,500	33,955
2005	15	9,814	12	12,965	0	0	22,779

Fiscal Year (FY): April 1 - March 31

¹ Databases and computer programs or digital content (except research papers, books, or reports)

² Including assignment

³ Unit / thousand yen

Collaborative Research

	Number of Cases	Revenue ¹
2004	378	1,726,933
2005	504	2,174,118
2006	643	2,987,601
2007	766	3,469,663
2008	820	3,903,903
2009	813	5,613,524
2010	861	6,231,529
2011	844	5,782,291
2012	933	6,649,823

Fiscal year: April 1 - March 31

¹Unit / thousand yen

Sponsored Research

	Number of Cases	Revenue ¹
2004	607	8,140,972
2005	664	9,282,207
2006	707	11,795,015
2007	698	10,903,624
2008	684	12,729,587
2009	728	14,137,356
2010	780	11,626,147
2011	847	12,718,523
2012	826	14,574,873

Fiscal year: April 1 - March 31

¹Unit / thousand yen



ACADEMIC EXCHANGE MEMORANDA

Distribution Map of Partner Universities and Consortia



Kyoto University has concluded general memoranda for academic exchange and cooperation with 107 universities, four university alliances, two national research academy as indicated below.

(February 1, 2014)

Country/Region	Universities	year of conclusion	☆
Australia	University of Queensland	1981	☆
	University of Melbourne	1997	☆
	University of New South Wales	1998	☆
	University of Sydney	1999	☆
	Australian National University	2008	☆
Austria	University of Wien	1993	☆
Belgium	University catholique de Louvain	1997	☆
Bhutan	Royal University of Bhutan	2013	
Botswana	University of Botswana	2012	
Canada	La Conference des Recteurs et des Principaux des Universites du Quebec	1994	☆
	University of Waterloo	2003	☆
	University of Toronto	1991	☆
China	Northwest University (西北大学)	1980	
	Wuhan University (武汉大学)	1980	☆
	Peking University (北京大学)	1983	☆
	Tsinghua University (清华大学)	1998	☆
	Fudan University (复旦大学)	2002	☆
	Zhejiang University (浙江大学)	2003	☆
	University of Science and Technology of China (中国科学技术大学)	2005	☆
	Hong Kong University of Science and Technology (香港科技大学)	2005	☆
	Nanjing University (南京大学)	2006	☆
	Shanghai Jiao Tong University (上海交通大学)	2008	☆
Xi'an Jiaotong University (西安交通大学)	2008	☆	



Country/Region	Universities	year of conclusion	☆
Czech	Charles University	1990	
Egypt	Egyptian Academy of Science, Research and Technology	2010	
	EgyptJapan University of Science and Technology	2012	
Finland	University of Helsinki	2011	☆
France	Université de Paris 7	1979	
	Universités de Strasbourg	1996	☆
	Le Consortium des universités de Grenoble (Grenoble I - Université Joseph Fou-rier, Grenoble II - Université Pierre Mendès France, Grenoble III - Université Stendhal and Institut National Polytechnique de Grenoble)	2000	☆
	Ecole Normale Supérieure	2009	☆
	Centre national de la recherche scientifique	2013	
Germany	Free University of Berlin	1984	☆
	Ludwig-Maximilians-University of Munich	1989	☆
	Rhenish Friedrich-Willhelm University of Bonn	1990	☆
	Rupert Charles University of Heidelberg	1990	☆
	Humboldt University of Berlin	1998	☆
	Technische Universität München	2006	☆
	Georg-August-Universität Göttingen	2011	☆
	Karlsruhe Institute of Technology	2011	☆
	University of Cologne	2013	
Guinea	University of Conakry	2013	
Indonesia	Bandung Institute of Technology	2006	
	University of Indonesia	2008	
	Gadjah Mada University	2012	
	Bogor Agricultural University	2013	
Israel	Tel Aviv University	1999	☆
Italy	University of Siena	1989	
	University of Bologna	1995	
Korea	Kyungpook National University (慶北大学校)	1984	☆
	Seoul National University (ソウル大学校)	1991	☆
	Yonsei University (延世大学校)	1998	☆
	Korea University (高麗大学校)	2002	☆
	Korea Advanced Institute of Science and Technology (韓国科学技術院)	2005	
	Pohang University of Science and Technology (浦項工科大学校)	2007	☆
	Konkuk University	2012	
Laos	National University of Laos	2002	
Malaysia	University of Malaya	2008	
Mexico	University of Guadalajara	1983	☆
Myanmar	Mandalay Technological University	2013	
	Yangon Technological University	2013	
Netherlands	Leiden University	1997	☆
	University of Utrecht	1997	☆
	University of Groningen	2013	
New Zealand	University of Auckland	2012	☆
Poland	Jagiellonian University	2013	
Russia	Moscow M.V. Lomonosov State University	1987	
	Saint-Petersburg State University	2013	
Singapore	National University of Singapore	1999	☆
	Nanyang Technological University	2013	
Sudan	University of Khartoum	2001	



Country/Region	Universities	year of conclusion	☆
Switzerland	Swiss Federal Institute of Technology Zurich	1989	
	University of Lausanne	1997	☆
	University of Zurich	2013	
Sweden	Stockholm University	1997	☆
	Uppsala University	1997	☆
	Royal Institute of Technology, Stockholm	2005	☆
Taiwan	National Taiwan University (国立台湾大学)	2005	☆
	National Tsing Hua University (国立清華大学)	2006	☆
Thailand	Kasetsart University	1984	☆
	Chulalongkorn University	2005	☆
	Thammasat University	2005	☆
Turkey	Koç University	2011	☆
U.K.	University of Sussex	1989	
	University of Oxford	1991	
	University of Cambridge	1997	
	University of Nottingham	1999	
	University of Edinburgh	2005	☆
	University of Sheffield	2006	☆
	University of Manchester	2006	☆
	University of Bristol	2011	☆
	Institute of Education, University of London	2011	
	University of Glasgow	2013	
U.S.A.	Wayne State University	1985	
	Stanford University	1989	
	University of California	1990	
	University of California, Davis	2011	
	Polytechnic University	1990	
	Brown University	1992	
	George Washington University	1998	☆
	Tufts University	1998	
	University of Pennsylvania	1999	☆
	University of Hawai'i	2003	☆
	University of Michigan	2003	
	University of Washington	2011	☆
The Board of Trustees of the University of Illinois	1999		
Ukraine	National University of Ukraine "Kyiv Polytechnic Institute"	2013	
Vietnam	Vietnam National University, Hanoi	2007	☆
	Hue University	2007	
	Hanoi University of Technology	2009	
Others	ASEAN University Network (AUN) (アセアン大学連合)	2009	
	ASEAN+3 University Network (AUN) アセアン+3 大学連合 (AUN)	2012	
	United Nations University 国際連合大学	2010	

☆ General Memorandum and Student Exchange Agreement

Universities with Student Exchange Agreement Only:

University of Hong Kong (2007)
 Chinese University of Hong Kong (2007)
 Fondation Nationale des Sciences Politiques (Sciences Po) (2009)
 University of Birmingham (2011)
 University of Newcastle (2011)

Individual faculties, graduate schools, institutes and centers of Kyoto University also have direct agreements with a broad range of institutions abroad. Details are available online.



KYOTO UNIVERSITY INTERNATIONAL SYMPOSIA

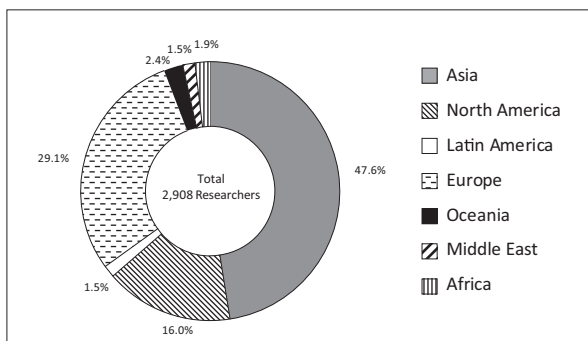
Kyoto University has periodically held international symposia at venues around the world since 2001. The symposia aim to publicize selected areas of research being undertaken at the university, and to bring together prominent international scholars to promote collaboration and the sharing of knowledge and ideas.

	Date	Place	Title	Remarks
1	Jan 13, 2001	Santa Clara, CA, USA	Network and Media Computing	
2	Nov 28, 2001 Nov 30, 2001	London, Edinburgh, UK	The Changes in the Japanese Economy Facing the New Century	Jointly organized with the University of London and the University of Edinburgh
3	Sept 3-4, 2002	Montreal, CANADA	Post-Petrofuels in the 21st Century-Prospects in the Future of Biomass Energy	
4	Dec 6-7, 2003	Ann Arbor, MI, USA	Self, Cognition, and Emotion	Jointly organized with the University of Michigan
5	Jan 27-29, 2005	SINGAPORE	Regulation of Cell Fate and Cell Function	Jointly organized with the National University of Singapore
6	Oct 8-9, 2005	Beijing, CHINA	Plant Sciences in Japan and China-from Genomics to Breeding	Jointly organized with Chinese Academy of Agricultural Sciences
7	Nov 23-24, 2005	Bangkok, THAILAND	Coexistence with Nature in a'Globalizing'World-Field Science Perspectives	Jointly organized with Chulalongkorn University, Thammasat University and Kasetsart University
8	Nov 23-25, 2006	Bangkok, THAILAND	Towards Harmonious Coexistence within Human and Ecological Community on this Planet	
9	June 22-23, 2007	Kyoto, JAPAN	Integrating Global Environmental Studies towards Human Security	
10	July 26-28, 2007	Bandung, INDONESIA	Active Geosphere Science	Jointly organized with Bandung Institute of Technology
11	Oct 9-11, 2008	Shanghai, CHINA	Frontier Bioscience in Modern Medicine	Special support from Fudan University
12	Dec 5-6, 2008	Kyoto, JAPAN	Transforming Racial Images: Analyses of Representations	
13	Dec 11-13, 2009	Kyoto, JAPAN	New Horizons of Academic Visual-Media Practices	
14	June 24, 2007	Xi'an, CHINA	High Resolution Digitization of Asian World Heritage	Special support from Xi'an Jiaotong University
15	Sept 19-20, 2010	Nagoya, JAPAN	Biodiversity, Zoos and AquariumsThe Message from Animals	Jointly organized with Port of Nagoya Public Aquarium and Nagoya Higashiyama Zoo
16	Sept 7-9, 2011	Istanbul, TURKEY	Innovative and Sustainable Development	Jointly organized with the Koç University
17	Dec 15-16, 2011	Kyoto, JAPAN	1st AEARU Symposium on the Culture of Chinese Characters	Jointly organized with the AEARU (The Association of East Asian Research Universities)
18	May 24-25, 2012	Bangkok, THAILAND	Partnering Asian Academics toward Human Security Development	Jointly organized with the AUN and Chulalongkorn University
19	July 27, 2012	Kyoto, JAPAN	Health Concerns in the Wake of the Tohoku Triple Disaster	Jointly organized with Harvard University
20	March 21, 2014	Boston, USA	Risk, Perception, and Response Conference	Jointly organized with Harvard University

RESEARCHERS FROM ABROAD

Countries and Regions		Number of Researchers
ASIA	Bangladesh	22
	Bhutan	13
	Brunei	3
	Cambodia	4
	China, P.R.	343
	India	99
	Indonesia	143
	East Timor	1
	Korea, R.	235
	Laos	17
	Malaysia	69
	Mongolia	5
	Myanmar	7
	Nepal	15
	North Korea	1
	Pakistan	4
	Philippines	18
	Singapore	39
	Sri Lanka	2
	Taiwan	154
Thailand	76	
Viet Nam	113	
NORTH AMERICA	Canada	55
	U.S.A	411
LATIN AMERICA	Argentina	1
	Bolivia	2
	Brazil	20
	Chili	1
	Colombia	5
	Ecuador	1
	Mexico	6
	Peru	8
EUROPE	Austria	15
	Belgium	9
	Bulgaria	6
	Croatia	10
	Czech	8
	Denmark	16
	Finland	14
	France	187
	Germany	133
	Greece	3
	Hungary	17
	Iceland	3
	Ireland	2
	Italy	47

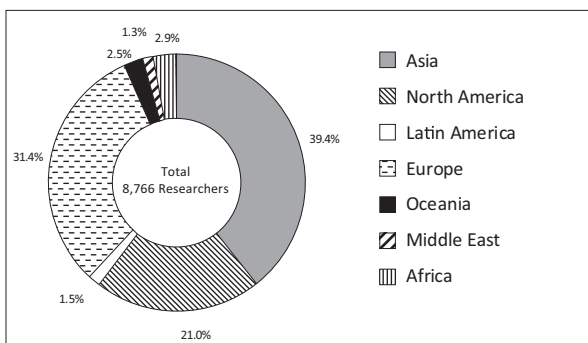
Countries and Regions		Number of Researchers
EUROPE	Kazakhstan	4
	Kyrgyz	1
	Macedonia	1
	Netherlands	24
	Norway	4
	Poland	7
	Portugal	6
	Romania	2
	Russia	49
	Slovakia	6
	Slovenia	2
	Spain	21
	Sweden	20
	Switzerland	49
U.K.	179	
Ukraine	1	
Uzbekistan	1	
OCEANIA	Australia	43
	Fiji	8
	New Zealand	9
	Vanuatu	9
MIDDLE EAST	Iran	15
	Israel	16
	Qatar	1
	Saudi Arabia	2
	Syria	2
AFRICA	Turkey	8
	United Arab Emirates	1
	Algeria	2
	Benin	1
	Botswana	2
	Congo	2
	Egypt	13
	Ethiopia	4
	Ghana	3
	Guinea	3
	Kenya	3
	Madagascar	1
	Morocco	1
	Senegal	1
Tanzania	4	
Togo	9	
Tunisia	1	
Uganda	3	
Zimbabwe	1	
Total		2908



RESEARCHERS GOING ABROAD

Countries and Regions		Number of Researchers
ASIA	Bangladesh	23
	Bhutan	32
	Brunei	13
	Cambodia	46
	China	751
	India	152
	Indonesia	284
	Korea	614
	Laos	54
	Malaysia	242
	Mongolia	17
	Myanmar	36
	Nepal	21
	North Korea	2
	Pakistan	3
	Philippines	62
	Singapore	147
	Sri Lanka	15
	Taiwan	309
Thailand	451	
Viet Nam	177	
NORTH AMERICA	Canada	191
	U.S.A	1651
LATIN AMERICA	Argentina	14
	Bolivia	1
	Brazil	46
	Chili	9
	Colombia	1
	Costa Rica	5
	Cuba	2
	Ecuador	1
	El Salvador	1
	Mexico	36
	Panama	1
Peru	17	
EUROPE	Austria	135
	Belarus	2
	Belgium	60
	Bosnia and Herzegovina	9
	Bulgaria	11
	Croatia	25
	Czech	31
	Estonia	2
	Denmark	41
	Finland	35
	France	469
	Georgia	1
	Germany	503
	Greece	23
	Hungary	23
	Iceland	1
	Ireland	26
	Italy	229
	Kazakhstan	3
	Kyrgyz	2
	Lithuania	7
	Luxembourg	3
	Netherlands	109
Norway	22	
Poland	45	

Countries and Regions		Number of Researchers
EUROPE	Portugal	100
	Romania	6
	Russia	59
	Serbia	3
	Slovakia	8
	Slovenia	8
	Spain	113
	Sweden	91
	Switzerland	152
	U.K.	376
OCEANIA	Ukraine	8
	Uzbekistan	8
	Australia	183
	Fiji	11
	Marshall Islands	1
MIDDLE EAST	New Zealand	21
	Palau	1
	Tonga	1
	Others	4
AFRICA	Iran	2
	Israel	16
	Jordan	4
	Qatar	2
	Saudi Arabia	8
	Turkey	62
	United Arab Emirates	17
AFRICA	Algeria	1
	Botswana	2
	Burkina Faso	2
	Cameroon	24
	Congo	1
	Congo, D.R.	6
	Egypt	31
	Ethiopia	18
	Gabon	3
	Ghana	12
	Guinea	9
	Kenya	26
	Madagascar	4
	Mauritius	1
	Morocco	5
	Namibia	6
	Niger	5
	Mauritania	1
	Mozambique	1
	Republic of Guinea-Bissau	1
	Rwanda	1
	Senegal	2
	South Africa	26
South Sudan	1	
Sudan	3	
Tanzania	31	
Tunisia	2	
Uganda	15	
Zambia	9	
Zimbabwe	5	
Others	3	
Total		8766

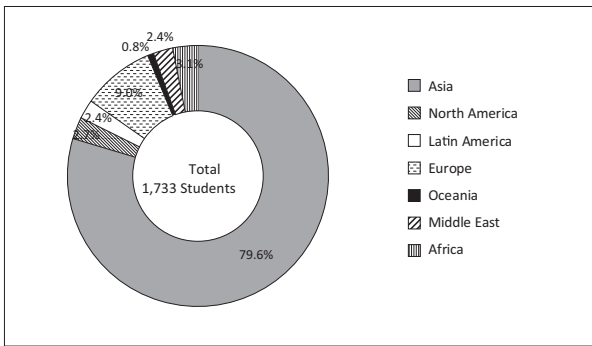


STUDENTS FROM ABROAD

地域	通称英名	Under graduates	Auditors	Master's Course	Doctoral Course	Professional Course	Auditors	Research Students	Total
ASIA	Bangladesh			1	13				14
	Brunei				1				1
	Cambodia				4			1	5
	China	98	13	260	260	57	10	66	764
	East Timor			1					1
	India			4	18		1	2	25
	Indonesia	6		13	24		4	3	50
	Korea	60	7	38	105	5	2	24	241
	Laos				1				1
	Malaysia	2		2	17	2			23
	Mongolia	1		1	5				7
	Myanmar			5	5			1	11
	Nepal			2	7				9
	Pakistan				6			2	8
	Philippines			1	6	1		6	14
	Singapore	1							1
	Sri Lanka				2			1	3
	Taiwan		5	17	48	9	2	9	90
Thailand	4	5	9	39	3	1	4	65	
Viet Nam	4		12	24	3	2	2	47	
NORTH AMERICA	Canada		16	2	2		1	2	23
	U.S.A.		3	8	8	1	2	2	24
LATIN AMERICA	Argentina	1		1	1				3
	Bolivia				1				1
	Brazil	2		6	5		1	3	17
	Chile			2				1	3
	Ecuador				1				1
	Mexico				4			2	6
	Paraguay			1				1	2
	Peru			1	4				5
	Uruguay				1				1
Venezuela			1		1			2	
EUROPE	Austria		1					1	2
	Azerbaijan			1	1	1		1	4
	Belarus	1		1		1			3
	Belgium				3				3
	Bosnia and Herzegovina							1	1
	Bulgaria				2			2	4
	Croatia				3			1	4
	Finland	1	2	1	1		1		6
	France		10	2	4		5	3	24
	Georgia	1		1					2
	Germany		9		5		8	2	24
	Greece		1		1			1	3
	Hungary	1	1		5			1	8
	Italy				1		3		4
	Lithuania				2			2	4
	Macedonia				2				2
	Netherlands		1		1		1		5
	Norway		1					1	2
	Poland				2			2	4
	Portugal				1				1
	Romania			1					1
	Russia			3	2			2	7
	Slovakia				1				1
	Spain			1	4		2		7
Sweden		5	2			1		8	
Switzerland						2		2	
Turkmenistan							1	1	
Ukraine				2	2		2	6	



地域	通称英名	Under graduates	Auditors	Master's Course	Doctoral Course	Professional Course	Auditors	Research Students	Total
	U.K.		3	5	3				11
	Uzbekistan				1			1	2
OCEANIA	Australia	1	2	2	2		1	1	9
	New Zealand				3			1	4
MIDDLE EAST	Afghanistan			3		1			4
	Bahrain			1					1
	Iraq			1				1	2
	Iran			2	13			3	18
	Israel				1	1			2
	Kuwait				1				1
	Lebanon							1	1
	Oman			1					1
	Syria			2	3				5
	Turkey			2	1			1	4
	Yemen			1	2				3
	AFRICA	Cameroon				1			
Congo, D.R.					2			1	3
Cote d'Ivoire								1	1
Egypt		1			15		1		17
Ethiopia					2				2
Gabonese Republic					1				1
Ghana					1				1
Kenya		4			2			1	7
Libya				1	1			2	4
Madagascar				2					2
Malawi					1				1
Morocco			1		1			1	3
Mozambique						1			1
Nigeria					1				1
South Africa					1			1	2
Sudan					2			1	3
Swaziland					1				1
Tunisia					1				1
Zimbabwe					1			1	2
Total		189	86	426	720	86	51	175	1,733

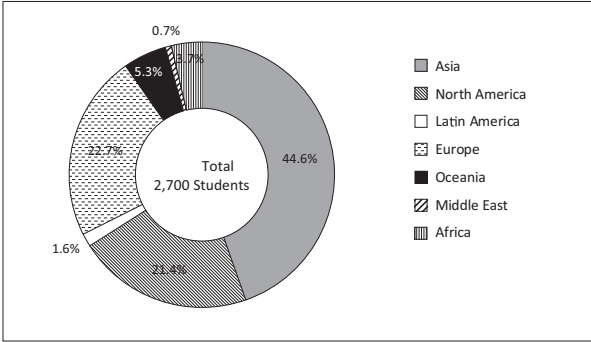


STUDENTS GOING ABROAD

地域	通称英名	Under graduates	Auditors	Master's Course	Doctoral Course	Professional Course	Auditors	Research Students	Total
ASIA	Bangladesh		2	6					8
	Bhutan		4	2					6
	Cambodia		5	11					16
	China	51	51	82	2				186
	China(Hong Kong)	18	2	2					22
	East Timor	1							1
	India	9	22	43					74
	Indonesia	1	39	38	2				80
	Korea	16	72	137	1		1		227
	Laos		3	6					9
	Malaysia	6	27	48	2				83
	Mongolia		2	6					8
	Myanmar		4	6					10
	Nepal	2	4	7					13
	Pakistan			1					1
	Philippines	2	12	13					27
	Singapore	2	8	10					20
	Sri Lanka			1					1
	Taiwan	27	31	32	2				92
Thailand	69	57	120	2				248	
Viet Nam	14	22	32	5				73	
NORTH AMERICA	Canada	36	14	27					77
	U.S.A.	119	137	236	5			3	500
LATIN AMERICA	Argentine		1	2					3
	Bolivia			1					1
	Brazil		6	16					22
	Chili		1						1
	Costa Rica			1					1
	Mexico		6	3					9
	Peru			5					5
Uruguay			1					1	
EUROPE	Austria	2	7	24					33
	Belgium	1	5	5				4	15
	Croatia	1		3					4
	Czech	1	4	2					7
	Denmark	2	1	6					9
	Finland		2	2					4
	France	14	26	56	4		1		101
	Germany	9	34	76					119
	Greece		1	1					2
	Hungary			1					1
	Iceland		1						1
	Ireland	1	4	2					7
	Italy	2	12	23					37
	Kazakhstan		1	1					2
	Lithuania		1						1
	Netherlands	7	7	14					28
	Norway		2	1					3
	Poland	2	4	2					8
	Portugal		13	7					20
	Romania	1	1						2
	Russia	1	4	7					12
	Slovakia			1					1
Slovenia		1	2					3	
Spain	1	3	19					23	
Sweden	3	2	13					18	
Switzerland	9	11	20	1				41	
U.K.	19	25	61	2		1		108	
Uzbekistan		1	1					2	



地域	通称英名	Under graduates	Auditors	Master's Course	Doctoral Course	Professional Course	Auditors	Research Students	Total
OCEANIA	Australia	67	20	31					118
	Fiji	1	4	1					6
	Palau			1					1
	New Zealand	7	5	6					18
MIDDLE EAST	Iran			3					3
	Israel	1	1	2					4
	Jordan		1						1
	Qatar		1	1					2
	Turkey		4	5	1				10
AFRICA	Botswana			1					1
	Burkina Faso	1	2	1					4
	Cameroon		2	6					8
	Congo, D.R.			1					1
	Egypt		1	6					7
	Ethiopia	1		7					8
	Gabon		1	2					3
	Ghana	1	1	2					4
	Guinea			2					2
	Kenya	4		8					12
	Madagascar			2					2
	Malawi			2					2
	Namibia		1	2					3
	Niger		3	2					5
	Rwanda			1					1
	Senegal			1					1
	South Africa		2	5					7
	Sudan			2					2
	Tanzania			3	10			1	14
Tunisia				1				1	
Uganda			3	3				6	
Zambia			1	5				6	
Total		532	761	1367	29	1	2	8	2,700



LIST OF OVERSEAS OFFICES AND FACILITIES

	Affiliation	Name	Location	Year Established
1	Graduate School of Economics	Kyoto University - Renmin University Joint Research Center	Beijing, China	2008
2	Graduate School of Engineering	Cooperative Research and Education Center for Environmental Technology at Tsinghua University	Shenzhen, China	2005
3	Graduate School of Engineering	Global Center of Excellence Kyoto University - Institut Teknologi Bandung for GCOE Joint Research and Education Center	Bandung, Indonesia	2008
4	Graduate School of Engineering	the Joint Education and Research Centre on AIT Campus under the Global Centre of Excellence, Kyoto University	Pathumthani, Thailand	2008
5	Graduate School of Engineering	Global Center of Excellence Kyoto University - the Municipal Corporation of Greater Mumbai(MCGM) for GCOE Joint Research and Education Center	Mumbai, India	2009
6	Graduate School of Engineering	Global Centre of Excellence Kyoto University - Centre for Maritime Studies National University of Singapore Transport Logistics Joint Research Centre	Singapore, Singapore	2008
7	Graduate School of Engineering	Kyoto University - University of Malaya Overseas Base in Malaysia for Education and Research	Kuala Lumpur, Malaysia	2010
8	Graduate School of Science	Satellite Office at Chulalongkorn University	Bangkok, Thailand	2003
9	Graduate School of Science	Research Base for Biodiversity of African Tropical Forest	Libreville, Gabon	2009
10	Graduate School of Science/ Research Institute for Sustainable Humanosphere	Satellite Office at Institut Teknologi Bandung	Bandung, Indonesia	2003
11	Graduate School of Science, Observatories	CHAIN Peru Station	Ica, Lima, Peru	2010
12	Graduate School of Agriculture	Khon Kean Research Office of the Graduate School of Agriculture, Kyoto University	Khon Kean, Thailand	1996
13	Graduate School of Agriculture	Japanese Research-Team Laboratory, Kinabalu Park Headquarters	Kota Kinabalu, Malaysia	1995
14	Graduate School of Agriculture	Japanese Research-Team Laboratory, Deramakot Forest Reserve	Sandakan, Malaysia	2003
15	Graduate School of Asian and African Area Studies	Ethiopia Field Station	Addis Ababa, Ethiopia	2003
16	Graduate School of Asian and African Area Studies	Cameroon Field Station	Ndongo Village, Cameroon	2003
17	Graduate School of Asian and African Area Studies	Nairobi Field Station	Nairobi, Kenya	2003
18	Graduate School of Asian and African Area Studies	Zambia Field Station	Lusaka, Zambia	2003
19	Graduate School of Asian and African Area Studies	Tanzania Field Station	Dar es Salaam, Tanzania	2003
20	Graduate School of Asian and African Area Studies	Namibia Field Station	Windhoek, Namibia	2008
21	Graduate School of Asian and African Area Studies / Center for Southeast Asian Studies	Laos Field Station	Vientiane, Laos	2002



	Affiliation	Name	Location	Year Established
22	Graduate School of Asian and African Area Studies / Center for Southeast Asian Studies	Makassar Field Station	Makassar, Indonesia	2003
23	Graduate School of Asian and African Area Studies / Center for Southeast Asian Studies	Cambodia Field Station	Phnom Penh, Cambodia	2010
24	Graduate School of Asian and African Area Studies / Center for Southeast Asian Studies	Indonesia Pekanbaru Field Station	Pekanbaru, Indonesia	2010
25	Graduate School of Asian and African Area Studies / Center for Southeast Asian Studies	Myanmar Field Station	Yangon, Myanmar	2003
26	Graduate School of Global Environmental Studies	Contact Office of Research and Education of Graduate School of Global Environmental Studies	Hue, Vietnam	2006
27	Graduate School of Global Environmental Studies/Graduate School of Engineering	Hanoi Office	Hanoi, Vietnam	2008
28	Graduate School of Global Environmental Studies	Hue Office	Hue, Vietnam	2008
29	Graduate School of Global Environmental Studies	Shenzhen Office	Shenzhen, China	2008
30	Institute of Advanced Energy	Thai Research Station Collaborative Research Laboratory	Pathumthani, Thailand	2003
31	Research Institute for Sustainable Humanosphere	Equatorial Atmosphere Radar	Bukittinggi, Indonesia	2001
32	Research Institute for Sustainable Humanosphere	RISH-RDUB Satellite Office	Bogor, Indonesia	2004
33	Research Institute for Sustainable Humanosphere	MHP Acacia Research Office	Muaraenim, Indonesia	2005
34	Disaster Prevention Research Institute	Seattle Satellite Office	Seattle, USA	1996
35	Primate Research Institute	Research Project on Bonobos in the Luo Reserve	Djolu, Congo	1973
36	Primate Research Institute	Bossou-Nimba Research Station	Bossou, Guinea	1976
37	Primate Research Institute	Kalinzu Forest Research Project by the Primate Research Institute	Bushenyi, Uganda	1997
38	Primate Research Institute	Orangutan Rehabilitation Project	Perak, Malaysia	2011
39	Center for Southeast Asian Studies	Bangkok Liaison Office	Bangkok, Thailand	1963
40	Center for Southeast Asian Studies	Jakarta Liaison Office	Jakarta, Indonesia	1970
41	Center for Southeast Asian Studies	Kuching Field Station	Kuching, Malaysia	2011
42	Office of Society-Academia Collaboration for Innovation	Kyoto University Liaison Office at Tsinghua University	Beijing, China	2006
43	Office of Society-Academia Collaboration for Innovation	Euro Representative of Kyoto University SACI	London, U.K.	2009
44	Center for Ecological Research	Field Station for Tropical Forest and Biodiversity Studies	Miri, Malaysia	1991
45	Center for Integrated Area Studies	CIAS Lima Office	Lima, Peru	2006
46	Wildlife Research Center	Kyoto University African Ape Expedition	Kigoma, Tanzania	1965
47	Wildlife Research Center	African Anthropological and Biological Field Research Center	Arusha, Tanzania	2006
48	Wildlife Research Center	Kuala Sungai Danum Research Station	Danum Valley, Malaysia	2009
49	Institute for Integrated Cell-Material Sciences	iCeMS Satellite at NCBS-inStem	Bangalore, India	2011
50	Organization for the Promotion of International Relations(OPIR)	Vietnam National University, Hanoi – Kyoto University Collaboration Office	Hanoi, Vietnam	2010

KYOTO UNIVERSITY

CONTACT

For Researchers

International Affairs Division

Yoshida-Honmachi, Sakyo-ku, Kyoto 606-8501

Tel: +81-75-753-2047

Fax: +81-75-753-2042

E-mail: koryu52@mail.adm.kyoto-u.ac.jp

URL: <http://www.kyoto-u.ac.jp>

For Students

Foreign Student Division

Yoshida-Honmachi, Sakyo-ku, Kyoto 606-8501

Tel: +81-75-753-2543

Fax: +81-75-753-2562

E-mail: ryugak78@mail.adm.kyoto-u.ac.jp

URL: <http://www.kyoto-u.ac.jp>