

General Information: Departments


Undergraduate Faculties and Graduate Schools

Undergraduate Faculties

 **Integrated Human Studies**
総合人間学部
www.h.kyoto-u.ac.jp/index_e.php

 **Economics**
経済学部
www.econ.kyoto-u.ac.jp/en

 **Engineering**
工学部
www.t.kyoto-u.ac.jp/en

 **Letters**
文学部
www.bun.kyoto-u.ac.jp/en


 **Science**
理学部
www.sci.kyoto-u.ac.jp/en

 **Agriculture**
農学部
www.kais.kyoto-u.ac.jp/english

 **Education**
教育学部
www.educ.kyoto-u.ac.jp/en


 **Medicine**
医学部
www.med.kyoto-u.ac.jp/en

 **Law**
法学部
law.kyoto-u.ac.jp/english

 **Pharmaceutical Sciences**
薬学部
www.pharm.kyoto-u.ac.jp/en

Graduate Schools

 **Letters**
文学研究科
www.bun.kyoto-u.ac.jp/en

 **Pharmaceutical Sciences**
薬学研究科
www.pharm.kyoto-u.ac.jp/en

 **Informatics**
情報学研究科
www.i.kyoto-u.ac.jp/en

 **Education**
教育学研究科
www.educ.kyoto-u.ac.jp/en

 **Engineering**
工学研究科
www.t.kyoto-u.ac.jp/en

 **Biostudies**
生命科学研究科
www.lif.kyoto-u.ac.jp/e

 **Law**
法学研究科
law.kyoto-u.ac.jp/english

 **Agriculture**
農学研究科
www.kais.kyoto-u.ac.jp/english

 **Advanced Integrated Studies in Human Survivability (GSAIS)**
総合生存学館
www.gsaiss.kyoto-u.ac.jp/en-top

 **Economics**
経済学研究科
www.econ.kyoto-u.ac.jp/en

 **Human and Environmental Studies**
人間・環境学研究科
www.h.kyoto-u.ac.jp/index_e.php

 **Global Environmental Studies (GSGES)**
地球環境学堂・地球環境学舎
www2.ges.kyoto-u.ac.jp/en

 **Science**
理学研究科
www.sci.kyoto-u.ac.jp/en

 **Energy Science**
エネルギー科学研究科
www.energy.kyoto-u.ac.jp/en

 **Government**
公共政策連携研究部・公共政策教育部
www.sg.kyoto-u.ac.jp/sg/

 **Medicine**
医学研究科
www.med.kyoto-u.ac.jp/en

 **Asian and African Area Studies (ASAFAS)**
アジア・アフリカ地域研究研究科
www.asafas.kyoto-u.ac.jp/en

 **Management**
経営管理研究部・経営管理教育部
www.gsm.kyoto-u.ac.jp/en

Kyoto University degree system



Note: Some faculties have different systems. Please refer to the websites of individual faculties and graduate schools for further details.

Kyoto University International Undergraduate Program (Kyoto iUP)



Kyoto iUP is a 4.5-year program comprising a six-month preparatory course followed by four years of undergraduate study. Japanese language proficiency is not required at the outset, and upon graduation, students are awarded a bachelor's degree in their selected major.

www.iup.kyoto-u.ac.jp/

English-Taught Undergraduate Program



Engineering

Undergraduate International Course Program of Civil Engineering

www.s-ge.t.kyoto-u.ac.jp/int/en

English-Taught Graduate Programs



Economics

International Graduate Programme for East Asia Sustainable Economic Development Studies

www.econ.kyoto-u.ac.jp/kueac



Science

International Course in Primatology and Wildlife Research

www.cicasp.pri.kyoto-u.ac.jp



Engineering

International Course in Management of Civil Infrastructure in the Department of Civil and Earth Resources Engineering

www.ce.t.kyoto-u.ac.jp/mci/en

International Course in Urban and Regional Development in the Department of Urban Management

www.um.t.kyoto-u.ac.jp/urd/en

Integrated Engineering Course, Human Security Engineering Field

hse.gcoe.kyoto-u.ac.jp/index.html



Agriculture

Special Course in Agricultural Sciences – For the Global Future of Life, Food and the Environment

www.kais.kyoto-u.ac.jp/english/global30



Energy Science

International Energy Science Course

www.energy.kyoto-u.ac.jp/en/education/course-overview



Informatics

International Course in Intelligence Science and Technology

International Course in Social Informatics

International Course in Communications and Computer Engineering

www.i.kyoto-u.ac.jp/en/introduction/g30.html



Biostudies / Medicine

Global Frontier in Life Science

www.lif.kyoto-u.ac.jp/Global_frontier_in_life_science/index.html



Global Environmental Studies

International Environmental Management Program

www2.ges.kyoto-u.ac.jp/en/activities/educational-activities/iemp



Management

International Business Administration Program

International Project Management Program

Kyoto-Cornell International Collaborative Degree Opportunity

www.gsm.kyoto-u.ac.jp/en

Research Institutes, Centers, and Other Organizations

Research Institutes



Institute for Chemical Research (ICR)
化学研究所
www.kuicr.kyoto-u.ac.jp/sites/icr



Institute for Research in Humanities
人文科学研究所
www.zinbun.kyoto-u.ac.jp/e



Institute for Frontier Life and Medical Sciences (inFront)
ウイルス・再生医科学研究所
www.infront.kyoto-u.ac.jp/?lang=en



Institute of Advanced Energy (IAE)
エネルギー理工学研究所
www.iae.kyoto-u.ac.jp/en



Research Institute for Sustainable Humanosphere (RISH)
生存圏研究所
www.rish.kyoto-u.ac.jp/?lang=en



Disaster Prevention Research Institute (DPRI)
防災研究所
www.dpri.kyoto-u.ac.jp/en



Yukawa Institute for Theoretical Physics (YITP)
基礎物理学研究所
www.yukawa.kyoto-u.ac.jp/en-GB



Kyoto Institute of Economic Research (KIER)
経済研究所
www.kier.kyoto-u.ac.jp/eng



Research Institute for Mathematical Sciences (RIMS)
数理解析研究所
www.kurims.kyoto-u.ac.jp/en/index.html



Institute for Integrated Radiation and Nuclear Science (KURNS)
複合原子力科学研究所
www.rri.kyoto-u.ac.jp/en



Primate Research Institute (PRI)
霊長類研究所
www.pri.kyoto-u.ac.jp/index.html



Center for Southeast Asian Studies (CSEAS)
東南アジア地域研究研究所
en.kyoto.cseas.kyoto-u.ac.jp



Center for iPS Cell Research and Application (CiRA)
iPS細胞研究所
www.cira.kyoto-u.ac.jp/e

Social Engagement Activities by Research Institutes

Kyoto University's research institutes actively engage in a range of diverse social engagement activities. One example is the Uji Open Campus. Uji Campus is home to many of Kyoto University's research institutes in the natural sciences and energy-related fields, and the open campus is held annually to provide the general public with an opportunity to see the institutes' activities firsthand. The open campus includes activities that can be enjoyed by people of all ages, including small children and the elderly. Activities include lectures by faculty members, an exhibition introducing the various research institutes on campus, and several research facilities and laboratories that open their doors to the public. Recent years have seen over 3000 people visiting the campus for the event.



Centers and Other Organizations



Academic Center for Computing and Media Studies (ACCMS)

学術情報メディアセンター
www.media.kyoto-u.ac.jp/en



Center for Ecological Research (CER)

生態学研究センター
www.ecology.kyoto-u.ac.jp/en/index.html



Wildlife Research Center (WRC)

野生動物研究センター
www.wrc.kyoto-u.ac.jp/en



Center for the Promotion of Excellence in Higher Education (CPEHE)

高等教育研究開発推進センター
www.highedu.kyoto-u.ac.jp/en



The Kyoto University Museum

総合博物館
www.museum.kyoto-u.ac.jp/index_e.htm



Field Science Education and Research Center (FSERC)

フィールド科学教育研究センター
fserc.kyoto-u.ac.jp/wp/english



Fukui Institute for Fundamental Chemistry (FIFC)

福井謙一記念研究センター
www.fukui.kyoto-u.ac.jp



Kokoro Research Center

こころの未来研究センター
kokoro.kyoto-u.ac.jp/en2



General Student Support Center

学生総合支援センター
www.gssc.kyoto-u.ac.jp



Kyoto University Archives

大学文書館
kua1.archives.kyoto-u.ac.jp/ja/english.html



Center for African Area Studies (CAAS)

アフリカ地域研究資料センター
www.africa.kyoto-u.ac.jp/eng/enindex.html



The Hakubi Center for Advanced Research

白眉センター
www.hakubi.kyoto-u.ac.jp/eng/eng.html



Center for the Promotion of Interdisciplinary Education and Research (C-PIER)

学際融合教育研究推進センター
www.cpier.kyoto-u.ac.jp

*Please note: the main C-PIER website is in Japanese, but many of the units have websites in English.



Center for Educational Program Promotion in Graduate School

大学院横断教育プログラム推進センター
www.ceppings.kyoto-u.ac.jp/en/



Institute for Liberal Arts and Sciences (ILAS)

国際高等教育院
www.z.k.kyoto-u.ac.jp



Agency for Health, Safety and Environment

環境安全保健機構
www.esho.kyoto-u.ac.jp



Institute for Information Management and Communication (IIMC)

情報環境機構
www.iimc.kyoto-u.ac.jp/en



Kyoto University Library Network

図書館機構
www.kulib.kyoto-u.ac.jp/?lang=en



Office of Society-Academia Collaboration for Innovation (SACI)

産官学連携本部
www.saci.kyoto-u.ac.jp/en



Open Innovation Institute

オープンイノベーション機構
www.oi.kyoto-u.ac.jp/en



International Strategy Office

国際戦略本部
u.kyoto-u.jp/istrategy



Kyoto University Institute for Advanced Study (KUIAS)

高等研究院
kuias.kyoto-u.ac.jp/e

Institute for Integrated Cell-Material Sciences (iCeMS)

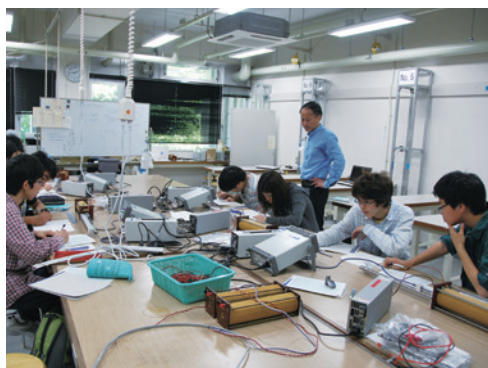
物質-細胞統合システム拠点
www.icems.kyoto-u.ac.jp/en

Institute for the Advanced Study of Human Biology (ASHBi)

ヒト生物学高等研究拠点
ashbi.kyoto-u.ac.jp/en

General Information: Core Facilities

Distinctive Education and Research Facilities



Institute for Liberal Arts and Sciences (ILAS)

By integrating the efforts of diverse faculties and departments throughout the University, ILAS plans and implements the courses that are common to all of the University's undergraduate programs, such as courses in the liberal arts, foreign languages, and introductory courses on basic sciences.

This ensures that the University's undergraduate programs are well balanced and provide a rich liberal arts and sciences component to complement their major fields of specialization. It also enables the programs to better meet students' individual interests and career plans.

The institute provides over two hundred courses entirely in English, helping Japanese students to cultivate an international mindset and providing international students with flexible curricula options. ILAS Seminars for first-year students are designed to ensure a smooth transition from high school to university education. The approach taken by ILAS helps students to broaden their horizons, develop new interests, and ultimately become more versatile and adaptable.

www.z.k.kyoto-u.ac.jp

Kyoto University Library Network

Kyoto University Library Network plays a central role in the accumulation and curation of the University's intellectual assets, and in facilitating their utilization for education, research, and community engagement. Its collection comprises over seven million volumes, including a designated national treasure and other rare materials.

In addition to a wide range of journals, books, and databases, Kyoto University Library Network also provides online access to the University's research information repository and its digital archive of rare materials. The Main Library building includes versatile facilities to support study and research, such as the Learning Commons (group-work space) and the Media Commons (multimedia facility).

www.kulib.kyoto-u.ac.jp/?lang=en





Kyoto University Hospital

Established in 1899, Kyoto University Hospital has trained leading experts in diverse medical fields for over a century, and made significant contributions to the advancement of medicine and healthcare in Japan. As a government-certified institution, it provides a wide array of advanced treatments, and currently comprises 34 clinical departments, 15 cross-departmental clinical divisions, 15 central facilities divisions, 14 clinical management support facilities, the 7 divisions of the Institute for Advancement of Clinical and Translational Science (iACT), and 7 clinical research and education divisions.

Functioning as both a cutting-edge medical research facility and a community-oriented healthcare institution, the hospital's mission focuses on the three areas of medical care, research, and education. In fulfilling its mission, the hospital provides high-quality patient-oriented medical care (including a state-of-the-art Cancer Center), develops innovative new medical treatments in cooperation with other research facilities (such as the University's Center for iPS Cell Research and Application [CiRA]), and fosters conscientious and compassionate healthcare professionals.

www.kuhp.kyoto-u.ac.jp/english

The Kyoto University Museum

The Kyoto University Museum is a center for research based on specimens accumulated by the University's scholars throughout the course of its long history. To this day, it continues to advance groundbreaking new research utilizing its expanding collection, which currently comprises 2.6 million items that are relevant to a wide spectrum of fields—from cultural sciences, to natural history, to engineering. The museum is open to students and the public, exhibiting highlights from its collection and showcasing the University's research activities.

The museum also serves as a bridge connecting the University with the community—through exhibitions, lectures, and other events. It is also the coordinating institution of a worldwide network of university museums, and has organized several international symposia focusing on the new research field of museum science.

www.museum.kyoto-u.ac.jp/index_e.htm



General Information: Support Services

Support Services for International Researchers and Students



Information and Advising Services

Information and advising services are available for international researchers and students who have concerns about their studies or about daily life in Japan.

International Student Advising Room

(For advice on academic studies and life in Japan)

www.kyoto-u.ac.jp/en/education-campus/facilities/international-student-advising.html

Kyoto University International Service Office

(For information about visas, accommodation, and daily life)

kuiso.oc.kyoto-u.ac.jp/top/en



Cultural Exchange and Language Learning Opportunities

Kyoto University frequently holds events to promote intercultural exchange in which students can participate, and various forms of support are provided for students and researchers seeking to improve their Japanese language skills.

Student Lounge KI-ZU-NA

www.kyoto-u.ac.jp/en/education-campus/facilities/student-lounge-kizuna

Education Center for Japanese Language and Culture

www.z.k.kyoto-u.ac.jp/introduction/education-center-for-japanese



Health Services

The Kyoto University Health Service provides medical and mental health services for students, faculty, and staff, including consultation, treatment, and health checkups. In addition to the clinic on Yoshida Campus, there are also branch clinics on the Katsura and Uji Campuses.

www.hoken.kyoto-u.ac.jp/en

Kyoto University's Response to the Novel Coronavirus (COVID-19)

At the time of this booklet's publication, university activities have been significantly affected by the novel coronavirus (COVID-19) pandemic. Please see the following webpage for updated information on the pandemic and Kyoto University's response measures:

www.kyoto-u.ac.jp/en/about/safety/coronavirus.html



Accommodation

Kyoto University provides accommodation for international researchers and students at

several locations close to its campuses, including two new dormitories near Yoshida Campus that opened in October 2019. The two new dormitories increase the number of rooms provided exclusively for international researchers and students by approximately 130, bringing the total number of rooms to approximately 550.

kuiso.oc.kyoto-u.ac.jp/housing/facilities/en



Support in Applying for Research Grants

The Kyoto University Research Administration Office (KURA) provides faculty members with comprehensive support in acquiring grants. Staffed by a team of knowledgeable experts in research development, KURA organizes seminars to provide information about available funding, and assists researchers with drafting proposals.

Kyoto University Research Administration Office (KURA)

www.kura.kyoto-u.ac.jp/en



Support for Childcare and Work-Life Balance

The Gender Equality Promotion Center provides various support services, including:

- Childcare support
- Care for sick children
- Support to maintain a healthy work-life balance

(Please contact the center in advance to check eligibility and other requirements)

Gender Equality Promotion Center

www.cwr.kyoto-u.ac.jp/eng/

Campuses and Facilities

Campuses



Yoshida (Main Campus)

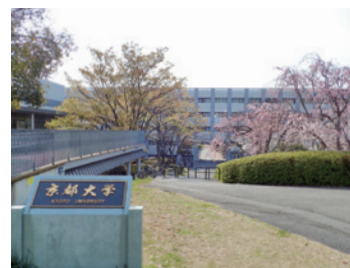
Located near the center of Kyoto City, Yoshida Campus is close to many scenic and natural spots, such as the famous Philosopher’s Walk and the Kyoto Imperial Palace. As the University’s main campus, it has long been a familiar landmark for Kyoto citizens, and well-known as a vibrant, bustling hub of student life. Buildings on the campus present a variety of architectural styles—from traditional Japanese wood and brick buildings dating back to the time of the University’s establishment, to modern laboratory buildings that house cutting-edge facilities.



Katsura

Katsura Campus comprises three clusters of buildings overlooking Kyoto from the hills to the west of the city. It was conceived

as a “Techno-Science Hill” for graduate studies in engineering, where technology and science come together to provide an innovative new style of education and research environment.

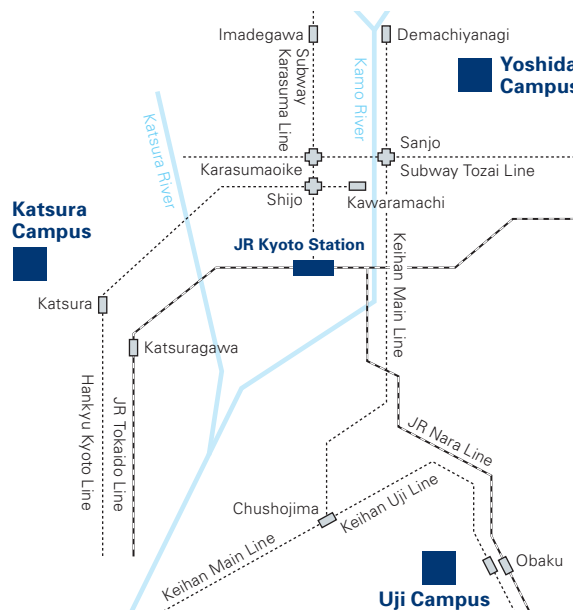
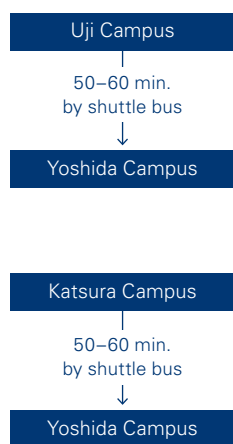


Uji

Located to the south of Kyoto City, Uji Campus is close to two UNESCO World Heritage Sites: Byōdōin Temple and Ujigami Shrine. It is

home to a number of leading research institutes and centers, including several large-scale facilities devoted to laboratory work in the natural sciences and energy-related fields.

Location of the Campuses in Kyoto



Access from Kansai International Airport



Shuttle Bus Service

www.kyoto-u.ac.jp/ja/access/documents/connecting_bus_schedule_2019.pdf

www.kyoto-u.ac.jp/en/access

Facilities throughout Japan

Since its establishment, Kyoto University has been renowned for its diverse fieldwork achievements. To facilitate those efforts, the University maintains a number of facilities at locations throughout Japan that serve as valuable resources for the activities of researchers.



Hokkaido Forest Research Station
Shiranuka Branch, Hokkaido



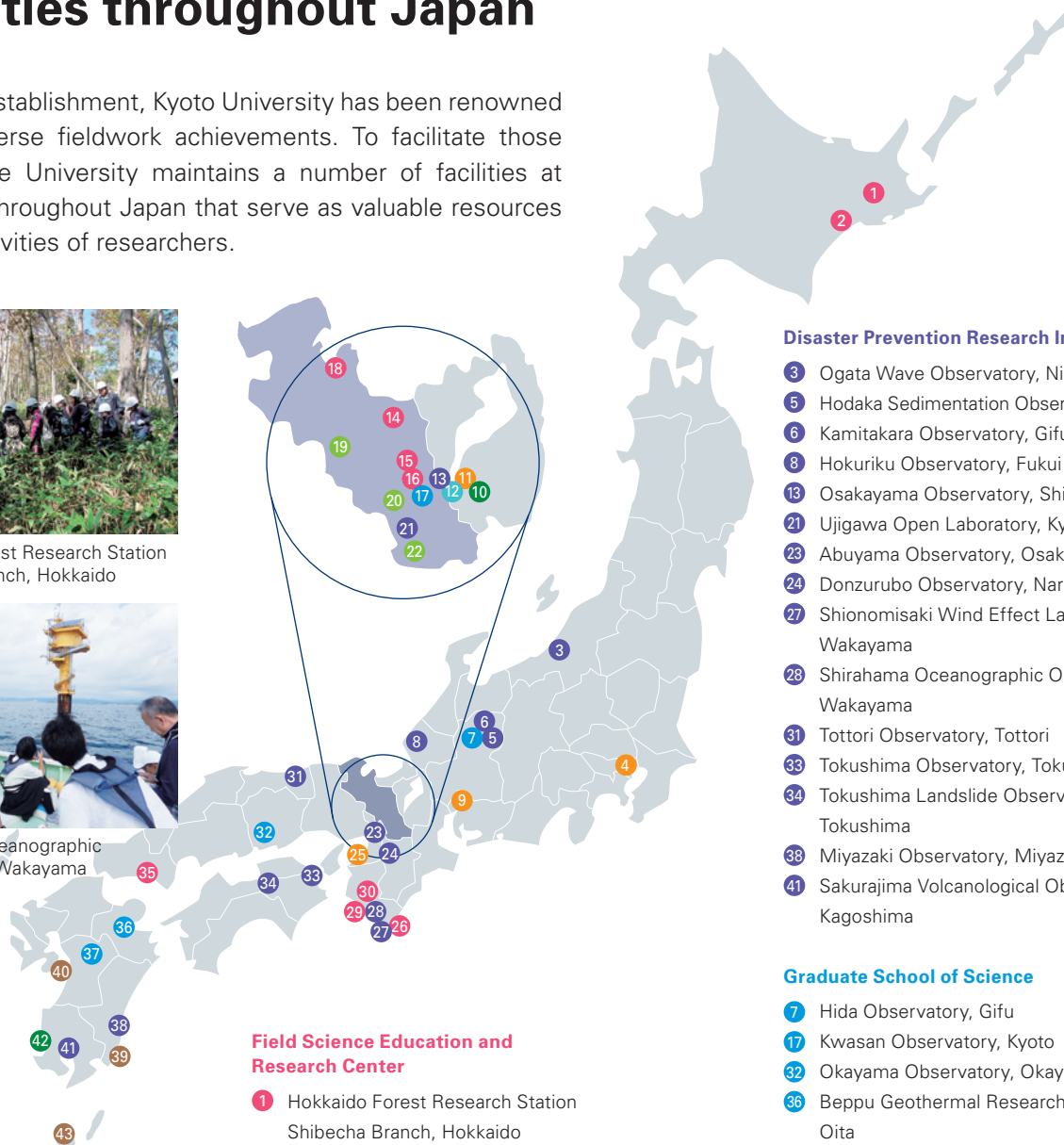
Shirahama Oceanographic
Observatory, Wakayama



Okayama Observatory, Okayama



Sakurajima Volcanological
Observatory, Kagoshima



Field Science Education and Research Center

- 1 Hokkaido Forest Research Station
Shibecha Branch, Hokkaido
- 2 Hokkaido Forest Research Station
Shiranuka Branch, Hokkaido
- 14 Ashiu Forest Research Station, Kyoto
- 15 Kamigamo Experimental Station, Kyoto
- 16 Kitashirakawa Experimental Station, Kyoto
- 18 Maizuru Fisheries Research Station, Kyoto
- 26 Kii-Oshima Research Station, Wakayama
- 29 Seto Marine Biological Laboratory, Wakayama
- 30 Wakayama Forest Research Station, Wakayama
- 35 Tokuyama Experimental Station, Yamaguchi

Graduate School of Agriculture

- 19 Livestock Farm, Kyoto
- 20 Laboratory of Crop Evolution, Kyoto
- 22 Experimental Farm, Kyoto

Graduate School of Engineering

- 12 Research Center for Environmental
Quality Management, Shiga

Disaster Prevention Research Institute

- 3 Ogata Wave Observatory, Niigata
- 5 Hodaka Sedimentation Observatory, Gifu
- 6 Kamitakara Observatory, Gifu
- 8 Hokuriku Observatory, Fukui
- 13 Osakayama Observatory, Shiga
- 21 Ujigawa Open Laboratory, Kyoto
- 23 Abuyama Observatory, Osaka
- 24 Donzurubo Observatory, Nara
- 27 Shionomisaki Wind Effect Laboratory,
Wakayama
- 28 Shirahama Oceanographic Observatory,
Wakayama
- 31 Tottori Observatory, Tottori
- 33 Tokushima Observatory, Tokushima
- 34 Tokushima Landslide Observatory,
Tokushima
- 38 Miyazaki Observatory, Miyazaki
- 41 Sakurajima Volcanological Observatory,
Kagoshima

Graduate School of Science

- 7 Hida Observatory, Gifu
- 17 Kwasan Observatory, Kyoto
- 32 Okayama Observatory, Okayama
- 36 Beppu Geothermal Research Laboratory,
Oita
- 37 Aso Volcanological Laboratory, Kumamoto

Research Institute for Sustainable Humanosphere

- 10 Shigaraki MU Observatory, Shiga
- 42 Living-sphere Simulation Field, Kagoshima

Wildlife Research Center

- 39 Koshima Field-Station, Miyazaki
- 40 Kumamoto Sanctuary, Kumamoto
- 43 Yakushima Field-Station, Kagoshima

Others

- 4 Tokyo Office, Tokyo
- 9 Primate Research Institute, Aichi
- 11 Center for Ecological Research, Shiga
- 25 Institute for Integrated Radiation
and Nuclear Science, Osaka