

SACI Office of Society-Academia Collaboration for Innovation

Missions :

- To promote collaborative research between academia, industry and the government
- To support start-up businesses by researchers and students
- To manage and utilize the university's intellectual properties



Director
Keisuke Makino

SACI Website Redesigned !

The site aims to provide a one-stop shop for companies that are interested in collaboration with Kyoto University. Through this site, you can acquire up-to-date information on technologies developed by Kyoto University.

Visit:
www.saci.kyoto-u.ac.jp/en

Videos of one-of-a-kind technologies offered by Kyoto University.

Look up technologies by category.

Check the latest technologies.

Look up technologies by keyword.



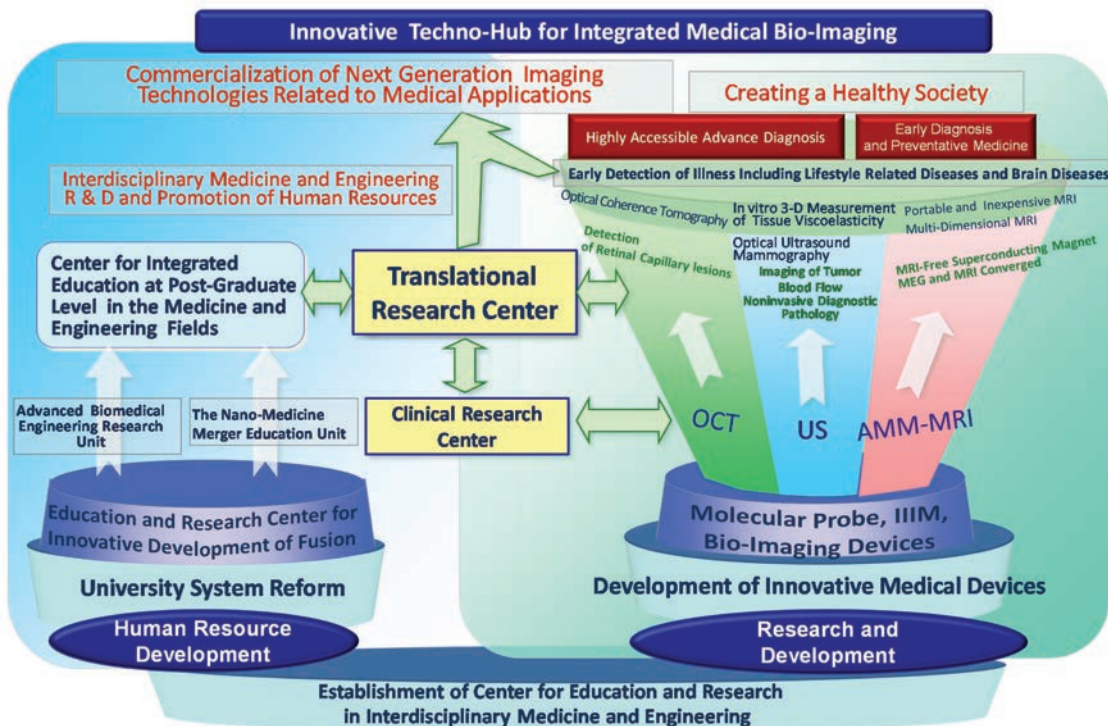
The screenshot shows the SACI website interface. At the top, it says "SACI Office of Society-Academia Collaboration for Innovation KYOTO UNIVERSITY". Below this is a navigation bar with links: Home, About, What We Do, Available Technologies, Showcase, For Inventors, FAQ, Link. The main content area features a "Notable R & D for Technology Transfer" section with a video player showing Kiyoshi Yasukawa. To the right is a "Available Technologies" section with a list of categories: Medicine & Biotechnology, Civil Engineering, Energy, Information Technology, Materials, Chemistry, Electronics and Optoelectronics, Environment, Machinery systems and Robots, Others. Below this is a "Keywords" section with terms like "Spermatogonial stem cell", "Spinal cord injury", "Cerita", "DDS", "Solar cell", "porous Material", "Cancer", "porous Solar cell", "porous Material", "porous Material". At the bottom is a "Technology Search" section with a search bar and filters for "Starting year / month".

CK Project

The Innovative Techno-hub for Integrated Medical Bio-imaging Project, also known as the CK Project, seeks to combine Kyoto University's integrated science and technology knowledge and excellent clinical research achievements, with the Canon corporation's technical strengths in product development. Financially supported by MEXT, the project was launched in 2006 and will last for ten years, concluding in 2015. In the long-term, the project aims to propose and realize new imaging-diagnosis techniques, and contribute to the creation of a healthy society by promoting cutting-edge research and development, and fostering talent in medicine and engineering fields.

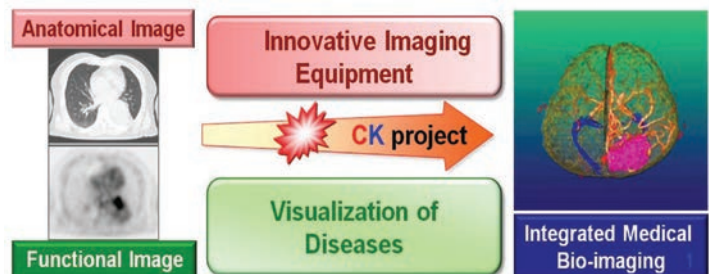


C: Canon Inc.
K: Kyoto University



Project Members:

- Graduate School of Engineering, KU
49 Researchers and Postdocs
 - Graduate School of Medicine, KU
56 Researchers and Medicinal Doctors
 - Canon Inc.
117 Researchers
- Total Budget:**
11 billion JPY over 10 years
(2006-2015)



For further information: ckpj.t.kyoto-u.ac.jp/?lang=en