

KYOTO UNIVERSITY

FACTS AND FIGURES

2011



CONTENTS

Chronological Table	1
Organization Chart	4
Staff and Students	5
Finance	6
University Facilities	9
Industry-Academia Collaboration	10
Academic Exchange Memoranda	11
Researchers from Abroad	14
Researchers going Abroad	15
Students from Abroad	16
Exchange of Researchers and Students	18
Kyoto University International Symposia	19
List of Overseas Offices and Facilities	20

CHRONOLOGICAL TABLE

Year	Contents
1897	Founded as Kyoto Imperial University. College of Science and Engineering established.
1899	Colleges of Law and Medicine established. University Library and University Hospital established.
1906	College of Letters established.
1914	College of Science and Engineering divided into College of Science and College of Engineering.
1919	Colleges reorganized into five faculties under the new University Ordinance. The Faculty of Economics was established.
1923	Faculty of Agriculture established.
1926	Institute for Chemical Research established.
1939	Institute for Research in Humanities established.
1941	Chest Disease Research Institute and Institute of Atomic Energy established.
1944	Wood Research Institute established.
1946	Research Institute for Food Science established.
1947	Renamed Kyoto University
1949	Reorganized on four-year schooling basis (with the exception of six years for medicine) under the new education system. Faculty of Education established. Branch School established for general education of freshmen and sophomores.
1951	Disaster Prevention Research Institute established.
1953	Graduate courses under the new system were opened. Yukawa Institute for Theoretical Physics established.
1954	Branch School renamed College of Liberal Arts and Sciences.
1956	Institute for Virus Research established.
1960	Faculty of Pharmaceutical Sciences established.
1962	Institute of Economic Research established.
1963	Research Institute for Mathematical Sciences and Research Reactor Institute established.
1965	Center for Southeast Asian Studies established.
1966	Center for Student Health established.
1967	Primate Research Institute established.



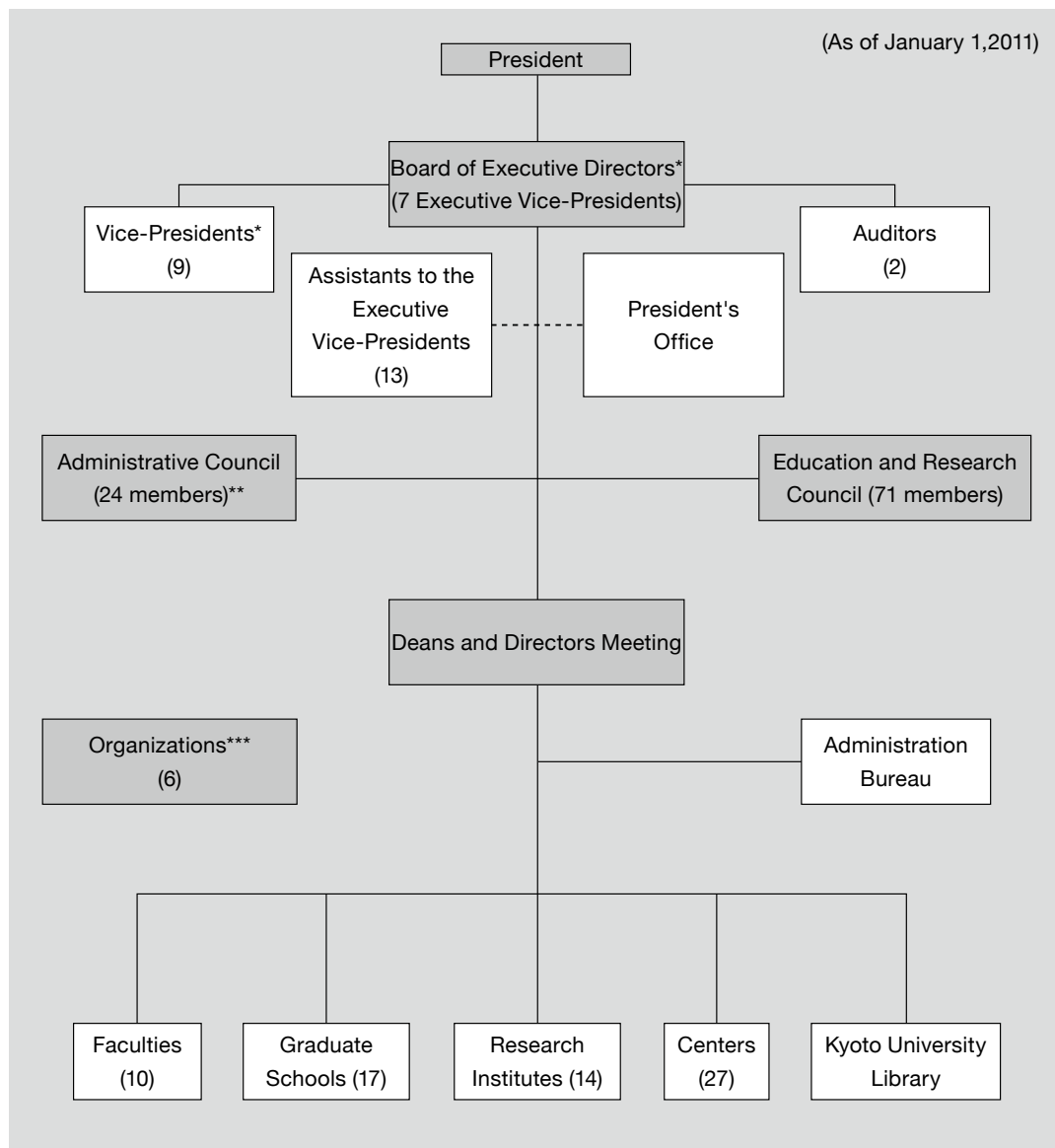
Year	Contents
1969	Data Processing Center established.
1971	Radioisotope Research Center established.
1972	Research Center for Sports Science established.
1975	College of Medical Technology established.
1976	Plasma Physics Laboratory and Radiation Biology Center established.
1977	Environment Preservation Center and Center for Archaeological Operations established.
1978	Educational Center for Information Processing established.
1980	Research Center for Biomedical Engineering established.
1981	Radio Atmospheric Science Center established.
1986	Center for African Area Studies established.
1988	Center for Molecular Biology and Genetics established.
1990	Center for Student Exchange established.
1991	Graduate School of Human and Environmental Studies and Center for Ecological Research established.
1992	College of Liberal Arts and Sciences reorganized and renamed Faculty of Integrated Human Studies.
1994	Research Center for Higher Education established.
1995	Venture Business Laboratory established.
1996	Graduate School of Energy Science established. Institute of Atomic Energy and Plasma Physics Laboratory merged into the Institute of Advance Energy. Student Counseling Center was established.
1997	Kyoto University Museum was established. The Educational Center for Information Processing reorganized and renamed Center for Information and Multimedia Studies.
1998	Graduate School of Asian and African Area Studies and Graduate School of Informatics established. Chest Disease Research Institute reorganized and renamed Institute for Frontier Medical Sciences. Research Center for Biomedical Engineering closed.
1999	Graduate School of Biostudies and Counseling Center established. Student Counseling Center was closed.
2000	Radio Atmospheric Science Center reorganized and renamed Radio Science Center for Space and Atmosphere. University Archives were established.



Year	Contents
2001	International Innovation Center was established. Research Institute for Food Science closed. Center for Data Collection and Analysis established.
2002	Graduate School of Global Environmental Studies established. Center for Data Processing and Center for Information and Multimedia Studies reorganized and renamed Academic Center for Computing and Multimedia Studies. Research Center for Low Temperature and Materials Sciences and Fukui Institute for Fundamental Chemistry established.
2003	Research Center for Sports Science closed. Seto Marine Biological Laboratory, University Forest, Subtropical Plant Institute and Fisheries Research Station merged into the Field Science Education and Research Center. Research Center for Higher Education reorganized and renamed Center for the Promotion of Excellence in Higher Education. Institute for the Promotion of Excellence in Higher Education and Law School established. The College of Medical Technology merged into Graduate School of Medicine.
2004	Kyoto University incorporated in accordance with the National University Corporation Law.
	Wood Research Institute and Radio Science Center for Space and Atmosphere unified as Research Institute for Sustainable Humanosphere. Center for Southeast Asian Studies given Institute status. Center for Molecular Biology and Genetics and Center for Data Collection and Analysis closed.
2005	Organization for the Promotion of International Relations, Environment, Safety, and Health Organization, International Innovation Organization, Institute for Information Management and Communication, and Library Network established. Center for Student Exchange reorganized and renamed International Center.
2006	School of Government established. Graduate School of Management established. Center for Integrated Area Studies established. Nano Medicine Merger Education Unit established. Institute of Sustainability Science established. Kyoto University Pioneering Research Unit for Next Generation established. Center for Women Researchers established.
2007	Kokoro Research Center established. Advanced Medical Engineering Research Unit established. Career-Path Promotion Unit for Young Life Scientists established. College of Medical Technology closed. International Innovation Organization reorganized and renamed Kyoto University Office of Society-Academia Collaboration for Innovation. International Innovation Center reorganized and renamed Innovative Collaboration Center. Institute for Integrated Cell-Material Sciences established.
2008	Wildlife Research Center established. Center for Archaeological Operations reorganized and renamed Center for Cultural Heritage Studies. Unit of Synergetic Studies for Space established. Education Unit for Global Leaders in Advanced Engineering and Pharmaceutical Sciences established.
2009	Young Researcher Development Center established.
2010	Center for the Promotion of Interdisciplinary Education and Research established. Center for iPS Cell Research and Application established. Innovative Collaboration Center closed (merged with Office of Society-Academia Collaboration for Innovation). Nano Medicine Merger Education Unit closed. Advanced Medical Engineering Research Unit closed. Career-Path Promotion Unit for Young Life Scientists closed. Micro/Nano Fabrication Hub in Kyoto Univ. established.



ORGANIZATION CHART



* Each of the (Executive) Vice-Presidents is in charge of a different area of university affairs.

** 24 members, 12 of whom are Kyoto University faculty and staff.

*** Including the Organization for the Promotion of International Relations.



STAFF AND STUDENTS

UNIVERSITY STAFF (As of May 1, 2010)

Position	Number
President	1
Executive Directors	7
Auditors	2
Professors	1,014
Associate Professors	766
Senior Lecturers	157
Assistant Professors	921
Sub-Total	2,868
Non-teaching Staff	2,556
Total	5,424

ENROLLMENT

(As of May 1 of each year)

Academic Year	Undergraduate	Graduate	Total
2010	13,473	9,314	22,787
2009	13,417	9,319	22,736
2008	13,399	9,308	22,707
2007	13,381	9,377	22,758

NUMBER OF GRADUATES

Academic Year	Undergraduates	Graduates		Total
		Master's Course	Doctoral Course	
2009	2,825	2,170	755	5,750
2008	2,866	2,143	783	5,792
2007	2,860	2,166	756	5,782
2006	2,797	2,164	774	5,735

NUMBER OF DEGREES CONFERRED

Academic Year	Master's Degree	Doctoral Degree
		New System
2009	2,170	870
2008	2,143	910
2007	2,166	909
2006	2,164	985

Note: Doctoral Degree, Old System (1897-1957) Total 9,651

NUMBER OF PROFESSIONAL DEGREES CONFERRED

Academic Year	Graduates	
2009	Law School	192
	School of Public Health	38
	School of Government	42
	Graduate School of Management	71
2008	Law School	187
	School of Public Health	32
	School of Government	41
	Graduate School of Management	54
2007	Law School	191
	School of Public Health	32
	School of Government	35
	Graduate School of Management	60



FINANCE

Consolidated Revenues and Expenses in Net Assets

The following charts show Kyoto University's total revenues and expenses for the 2009 fiscal year. They also identify the major components of these revenues and expenses. Kyoto University has several revenue sources, the largest of which are university administration grants. The largest expense is instruction and research. All other expenses are incurred in supporting instruction and research and in funding Kyoto University's public service activities.

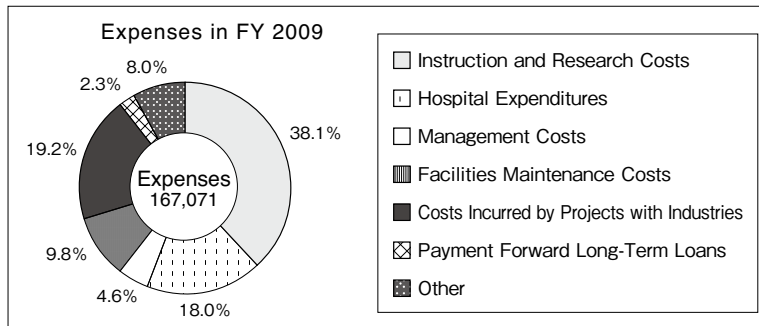
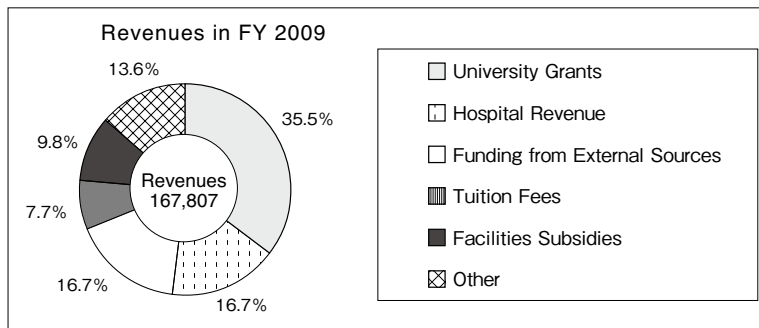
Revenues in FY 2009

	Unit: million yen million US dollar*		
University Grants	59,640	722.91	35.5%
Hospital Revenue	28,007	339.48	16.7%
Funding from External Sources	28,031	339.77	16.7%
Tuition Fees	12,927	156.69	7.7%
Facilities Subsidies	16,391	198.68	9.8%
Other	22,811	276.50	13.6%
Total	167,807	2,034.02	

Expenses in FY 2009

	Unit: million yen million US dollar*		
Instruction and Research Costs	63,618	771.13	38.1%
Hospital Expenditures	30,068	364.46	18.0%
Management Costs	7,684	93.14	4.6%
Facilities Maintenance Costs	16,391	198.68	9.8%
Costs Incurred by Projects with Industries	32,082	388.87	19.2%
Payment of Long-term Loans	3,883	47.07	2.3%
Other	13,345	161.76	8.0%
Total	167,071	2,025.10	

*US \$ 1 = ¥82.5 (Exchange rate for Nov. 2010)



Assets	Category	Unit: million yen	million US dollar*
	Fixed assets	406,716	4,929.89
	Land	166,180	2,014.30
	Buildings	196,869	2,386.29
	Accumulated depreciation	▲ 55,715	▲ 675.33
	Structures	14,757	178.87
	Accumulated depreciation	▲ 4,690	▲ 56.85
	Accumulated impairment loss	▲ 2	▲ 0.02
	Equipment & furnishings	92,638	1,122.88
	Accumulated depreciation	▲ 52,174	▲ 632.41
	Books	32,633	395.55
	Art & other valuables	732	8.87
	Construction in progress	1,779	21.56
	Patents	65	0.79
	Leaseholds	1,259	15.26
	Software	273	3.31
	Investment securities	8,502	103.05
	Long-term savings	2,600	31.52
	Other fixed assets	1,010	12.24
	Current assets	53,242	645.36
	Cash & bank savings	44,840	543.52
	Accounts receivable of student payments	249	3.02
	Reserve for uncollectable payments	▲ 74	▲ 0.90
	Accounts receivable of hospital revenue	5,431	65.83
	Reserve for uncollectable payments	▲ 448	▲ 5.43
	Accrued revenue	870	10.55
	Marketable securities	1,058	12.82
	Inventories	655	7.94
	Medicine & supplies	545	6.61
	Other current assets	114	1.38
	Total assets	459,959	5,575.26

*US \$ 1 = ¥ 82.5 (Exchange rate for Nov. 2010)



Liabilities	Category	Unit: million yen	million US dollar*
	Fixed liabilities	108,332	1,313.12
	Contra accounts for services & assets	72,427	877.90
	Long-term loans payable to the Center for National University Finance and Management	18,690	226.55
	Long-term loans payable	3,169	38.41
	Long-term accrued amount payable	13,937	168.93
	Other fixed liabilities	109	1.32
	Current liabilities	57,694	699.32
	Blance of donations	13,791	167.16
	Funds for research & other entrusted activities	3,156	38.25
	Current portion of loans payable to the Center for National University Finance and Management	2,725	33.03
	Current portion of long-term loans payable	256	3.10
	Accrued amount payable	34,459	417.68
	Other current liabilities	2,410	29.21
	Total liabilities	166,026	2,012.44

Net Assets	Category	Unit: million yen	million US dollar*
	Capital	244,526	2,963.95
	National government investments	244,526	2,963.95
	Capital surplus	19,534	236.78
	Capital surplus	72,440	878.06
	Accumulated depreciation charged to capital surplus	▲ 52,897	▲ 641.18
	Accumulated impairment loss charged to capital surplus	▲ 8	▲ 0.10
	Retained earnings	29,872	362.08
	Accumulated reserve for education and research	3,048	36.95
	Accumulated reserve	14,175	171.82
	Unappropriated retained earnings	12,648	153.31
	Net assets	293,932	3,562.81
	Total liabilities & net assets	459,959	5,575.26

*US \$ 1 = ¥82.5 (Exchange rate for Nov. 2010)

Statement of Income 2009 Fiscal Year

Ordinary Expenses	Category	Unit: million yen	million US dollar*
	Operating expenses	128,941	1,562.92
	Education expenses	5,891	71.41
	Research expenses	21,310	258.30
	Expenses for medical practice	17,897	216.93
	Support for education & research	3,761	45.59
	Expenses for entrusted activities	16,831	204.01
	Personnel expenses	63,250	766.67
	Management costs	4,448	53.92
	Finance costs	1,348	16.34
	Miscellaneous losses	8	0.10
	Total ordinary expenses	134,745	1,633.27



Ordinary Revenues	Category	Unit: million yen million US dollar*	
	Revenue from grants for administrative services	55,684	674.96
	Revenue from tuition and fees	13,705	166.12
	Hospital revenue	28,070	340.24
	Revenue from entrusted activities	19,753	239.43
	Revenue from donations	4,265	51.70
	Contra account for services & assets	6,373	77.25
	Other revenues	13,982	169.48

Total ordinary revenues	141,832	1,719.18
--------------------------------	----------------	-----------------

Ordinary profit	7,087	85.90
Extraordinary loss	122	1.48
Extraordinary income	3,692	44.75
Withdrawals from the accumulated reserve for education & research	1,992	24.15

Total income for the year	12,648	140.07
----------------------------------	---------------	---------------

*US \$ 1 = ¥82.5 (Exchange rate for Nov. 2010)

UNIVERSITY FACILITIES

Library Collection

As of March 31, 2010

	Number of Books			Number of Magazines and Periodicals		
	Japanese	International	Total	Japanese	International	Total
Main University Library	600,752	252,265	853,017	14,042	9,186	23,228
Other University Libraries and Reference Rooms	2,691,499	2,834,299	5,525,798	41,635	43,728	85,363
Combined Total	3,292,251	3,086,564	6,378,815	55,677	52,914	108,591

Number of Visitors to the Kyoto University Museum

	Paying Visitors			Non-Paying Visitors	Total
	Individuals	Groups	Sub-total		
2005	15,728	2,222	17,950	11,980	29,930
2006	17,224	3,748	20,972	17,251	38,223
2007	15,351	1,300	16,651	19,419	36,070
2008	14,487	662	15,149	22,029	37,178
2009	13,843	916	14,759	20,243	35,002

Number of Visitors to the Seto Marine Biological Laboratory Aquarium

	Individuals	Groups	Paying Visitors	Non-Paying Visitors	Total
2005	52,966	2,726	55,692	2,600	58,292
2006	52,265	2,759	55,024	6,389	61,413
2007	56,725	2,316	59,041	6,722	65,763
2008	55,910	3,227	59,137	7,274	66,411
2009	52,483	2,621	55,104	7,581	62,685

Kyoto University Hospital

Statistics for 2009

Number of Beds	Number of Inpatients	Number of Outpatients
1,182	365,795	635,032

INDUSTRY-ACADEMIA COLLABORATION

Invention Disclosure

FY	Number of Invention Disclosure Forms Submitted
2003	169
2004	524
2005	454
2006	392
2007	390
2008	405
2009	405

Fiscal Year (FY): April 1-March 31

Patent

FY	DOMESTIC		FOREIGN	
	Number of Patent Applications	Number of Patents Issued	Number of Patent Applications ¹	Number of Patents Issued ²
2003	114 (61)	6 (2)	25 (8)	1 (0)
2004	292 (153)	2 (0)	71 (28)	0 (0)
2005	324 (173)	14 (2)	212 (104)	0 (0)
2006	318 (197)	14 (7)	234 (130)	9 (6)
2007	262 (180)	20 (12)	555 (347)	9 (8)
2008	227 (157)	22 (10)	207 (99)	26 (18)
2009	244 (170)	48 (22)	127 (62)	40 (18)
Total		168 (62)		113 (66)

Fiscal Year (FY): April 1 - March 31

The Number of joint applications or co-owned patents is shown in brackets

¹ Including patent applications under the PCT or EPC.

² Of these, 306 are applications filed in accordance with the EPC (9 applications which could be applicable to 34 designated countries)

Exploitation of Intellectual Property

FY	PATENTS		COPYRIGHTS ¹		RESEARCH MATERIALS		TOTAL
	Number of Licenses ²	Revenue ³	Number of Licenses ²	Revenue ³	Number of Licenses ²	Revenue ³	Revenue ³
2003	0	0	0	0	0	0	0
2004	0	0	4	5,380	1	12,329	17,709
2005	15	9,814	12	12,965	0	0	22,779
2006	19	17,002	7	6,453	1	10,500	33,955
2007	34	23,694	7	12,904	15	19,242	55,840
2008	47	48,424	7	6,812	38	47,217	102,453
2009	58	65,432	8	3,675	46	23,917	93,024

Fiscal Year (FY): April 1-March 31

¹ Databases and computer programs or digital content (except research papers, books, or reports)

² Including assignment

³ Unit/thousand yen

Collaborative Research

FY	Number of Projects	Revenue ¹
2003	299	1,327,414
2004	378	1,726,933
2005	504	2,174,118
2006	643	2,987,601
2007	766	3,469,663
2008	820	3,903,903
2009	813	5,613,524

Fiscal Year (FY): April 1-March 31

¹Unit/thousand yen

Sponsored Research

FY	Number of Projects	Revenue ¹
2003	527	6,161,347
2004	607	8,140,972
2005	664	9,282,207
2006	707	11,795,015
2007	698	10,903,624
2008	684	12,729,587
2009	728	14,137,356

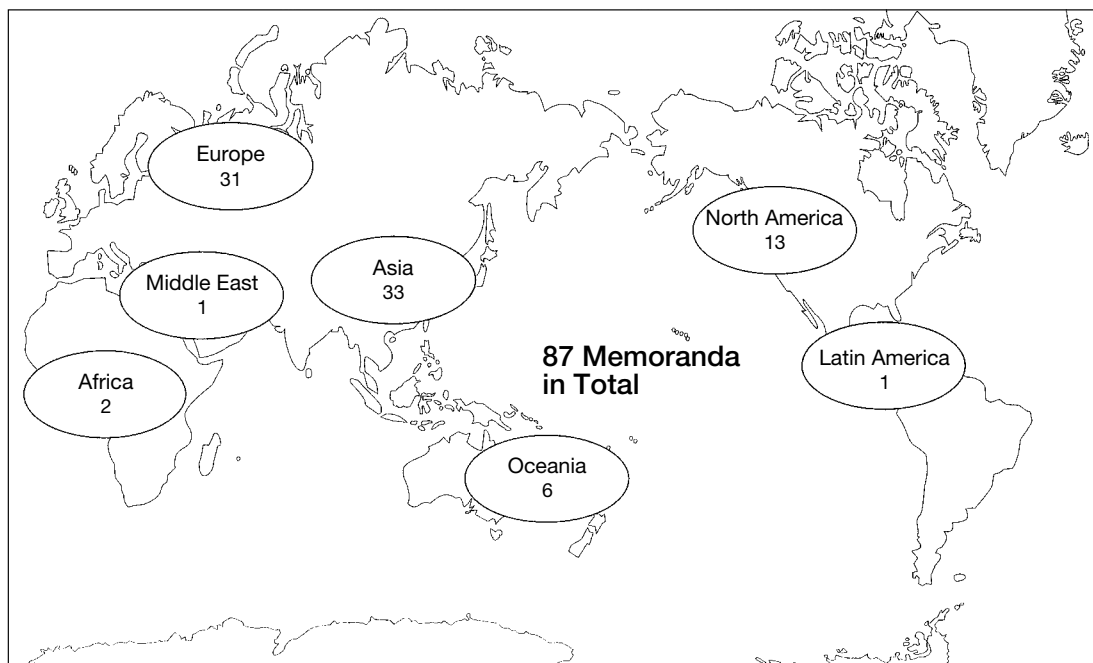
Fiscal Year (FY): April 1-March 31

¹Unit/thousand yen



ACADEMIC EXCHANGE MEMORANDA

Distribution Map of Partner Universities and Consortia



Kyoto University has concluded general memoranda for academic exchange and cooperation with 83 universities, three university alliances, one national research academy and one consortium as indicated below.

(As of January 1, 2011)

Country/Region	Universities	year of conclusion	☆
Australia	University of Queensland	1981	
	University of Melbourne	1997	☆
	University of New South Wales	1998	☆
	University of Sydney	1999	☆
	Australian National University	2008	☆
Austria	University of Vienna	1993	☆
Belgium	Universit catholique de Louvain	1997	☆
Canada	University of Toronto	1991	☆
	La Conférence des Recteurs et des Principaux des Universités du Québec du Québec	1994	☆
	University of Waterloo	2003	☆
China	Northwest University (西北大学)	1980	
	Wuhan University (武汉大学)	1980	☆
	Peking University (北京大学)	1983	☆
	Tsinghua University (清华大学)	1998	☆
	Fudan University (复旦大学)	2002	☆
	Zhejiang University (浙江大学)	2003	☆
	University of Science and Technology of China (中国科学技术大学)	2005	
	Hong Kong University of Science and Technology (香港科技大学)	2005	☆
	Nanjing University (南京大学)	2006	☆
	Shanghai Jiao Tong University (上海交通大学)	2008	
Xi'an Jiaotong University (西安交通大学)	2008		

Country/Region	Universities	year of conclusion	☆
Czech	Charles University	1990	
Egypt	The Egyptian Academy of Science, Research and Technology	2011	
France	Université de Paris 7	1979	
	Union des Universités de Strasbourg	1996	☆
	Le Consortium des universités de Grenoble (Grenoble I - Université Joseph Fourier, Grenoble II - Université Pierre Mendès France, Grenoble III - Université Stendhal and Institut National Polytechnique de Grenoble)	2000	☆
	Ecole Normale Supérieure	2009	
Germany	Free University of Berlin	1984	☆
	Ludwig-Maximilians-University of Munich	1989	☆
	Rhenish Friedrich-Willhelm University of Bonn	1990	☆
	Rupert Charles University of Heidelberg	1990	☆
	Humboldt University Berlin	1998	☆
	Technische Universität München	2006	☆
Indonesia	Bandung Institute of Technology	2006	
	Indonesian Institute of Sciences (LIPI)	2006	
	University of Indonesia	2008	
Israel	Tel Aviv University	1999	☆
Italy	University of Siena	1989	
	University of Bologna	1995	
	University of Pisa	2001	
Korea	Kyungpook National University (慶北大学校)	1984	☆
	Seoul National University (ソウル大学校)	1991	☆
	Yonsei University (延世大学校)	1998	☆
	Korea University (高麗大学校)	2002	☆
	Korea Advanced Institute of Science and Technology (韓国科学技術院)	2005	
	Pohang University of Science and Technology (浦項工科大学校)	2007	☆
Laos	National University of Laos	2002	
Malaysia	University of Malaya	2008	
Mexico	University of Guadalajara	1983	☆
Netherlands	Leiden University	1997	☆
	University of Utrecht	1997	☆
New Zealand	University of Auckland	1997	☆
Russia	Moscow M. V. Lomonosov State University	1987	
Singapore	National University of Singapore	1999	☆
Sudan	University of Khartoum	2001	
Switzerland	Swiss Federal Institute of Technology Zurich	1989	
	University of Lausanne	1997	☆
Sweden	Stockholm University	1997	☆
	Uppsala University	1997	☆
	Royal Institute of Technology	2005	☆
Taiwan	National Taiwan University (国立台湾大学)	2005	☆
	National Tsing Hua University (国立清華大学)	2006	☆
Thailand	Kasetsart University	1984	☆
	Thammasat University	2005	☆
	Chulalongkorn University	2005	☆
U.K.	University of Sussex	1989	
	University of Oxford	1991	
	University of Cambridge	1997	
	University of Nottingham	1999	
	University of Edinburgh	2005	
	University of Sheffield	2006	☆
University of Manchester	2006	☆	



Country/Region	Universities	year of conclusion	☆
U. S. A.	Wayne State University	1985	
	Stanford University	1989	
	University of California	1990	☆
	Polytechnic University	1990	
	Brown University	1992	
	George Washington University	1998	☆
	Tufts University	1998	
	University of Pennsylvania	1999	☆
	University of Hawai'i	2003	☆
	University of Michigan	2003	
Vietnam	Vietnam National University, Hanoi	2007	
	Hue University	2007	
	Hanoi University of Technology	2009	
Others	United Nations University (国際連合大学)	2005	
	ASEAN University Network (AUN) (アセアン大学連合)	2009	

☆ General Memorandum and Student Exchange Agreement

Universities with Student Exchange Agreement Only:

University of Hong Kong (2007)

Chinese University of Hong Kong (2007)

Institut d'Etudes Politiques de Paris (2009)

Individual faculties, graduate schools, institutes and centers of Kyoto University have also concluded agreements with 341 institutions abroad.



RESEARCHERS FROM ABROAD

(April 2009-March 2010)

Country/Region		Number of Researchers
ASIA	Bangladesh	8
	Cambodia	1
	China	232
	India	47
	Indonesia	12
	Korea	193
	Laos	2
	Malaysia	14
	Mongolia	4
	Myanmar	5
	Nepal	5
	Pakistan	8
	Philippines	6
	Singapore	26
	Sri Lanka	8
	Taiwan	90
	Thailand	35
Viet Nam	34	
NORTH AMERICA	Canada	57
	U.S.A	547
LATIN AMERICA	Argentina	2
	Brazil	12
	Chili	1
	Colombia	2
	Cuba	1
	Mexico	1
	Peru	5
Venezuela	1	
EUROPE	Armenia	1
	Austria	36
	Belgium	12
	Bulgaria	2
	Croatia	1
	Czech	21
	Denmark	13
	Estonia	1
	Finland	26
	France	183
Germany	177	

Country/Region		Number of Researchers
EUROPE	Greece	2
	Hungary	14
	Iceland	1
	Ireland	9
	Italy	80
	Kazakhstan	1
	Kyrgyz	1
	Moldova	1
	Netherlands	31
	Norway	4
	Poland	16
	Portugal	9
	Romania	1
	Russia	55
	Serbia	4
	Slovakia	1
	Slovenia	2
	Spain	45
	Sweden	30
	Switzerland	26
OCEANIA	U.K.	178
	Ukraine	6
	Australia	33
	Micronesia	1
MIDDLE EAST	New Zealand	4
	Iran	3
	Israel	20
AFRICA	Oman	1
	Qatar	1
	Turkey	3
	Algeria	2
	Egypt	16
	Gabon	1
	Kenya	4
	Madagascar	2
	Senegal	1
	South Africa	5
Tunisia	1	
Total		2,447

The number of researchers from abroad doing research at Kyoto University, irrespective of their length of stay.



RESEARCHERS GOING ABROAD

(April 2009-March 2010)

Country/Region		Number of Researchers
ASIA	Bangladesh	51
	Bhutan	3
	Brunei	4
	Cambodia	22
	China	819
	East Timor	1
	India	97
	Indonesia	242
	Korea	451
	Laos	63
	Malaysia	137
	Mongolia	14
	Myanmar	18
	Nepal	23
	Pakistan	1
	Philippines	48
	Singapore	122
	Sri Lanka	17
	Taiwan	274
Thailand	377	
Viet Nam	163	
NORTH AMERICA	Canada	159
	U.S.A	1,290
LATIN AMERICA	Cuba	1
	Argentine	6
	Barbados	1
	Belize	1
	Bolivia	1
	Brazil	23
	Chili	3
	Costa Rica	1
	El Salvador	1
	Jamaica	1
	Mexico	12
	Panama	1
	Peru	14
	Venezuela	1
EUROPE	Austria	102
	Belarus	2
	Belgium	42
	Bosnia and Herzegovina	3
	Bulgaria	6
	Croatia	9
	Cyprus	1
	Czech	34
	Denmark	23
	Estonia	2
	Finland	37
	France	365
	Georgia	1
	Germany	376
	Greece	23
	Hungary	34
	Iceland	2
	Ireland	9
	Italy	168
	Kazakhstan	5
	Kyrgyz	3
	Latvia	2
	Lithuania	2

Country/Region		Number of Researchers
EUROPE	Luxembourg	7
	Monaco	1
	Netherlands	99
	Norway	23
	Poland	36
	Portugal	27
	Romania	4
	Russia	50
	Serbia	5
	Slovakia	10
	Slovenia	4
	Spain	120
	Sweden	43
	Switzerland	80
	U.K.	302
	Ukraine	4
Uzbekistan	5	
OCEANIA	Australia	122
	Fiji	4
	New Zealand	26
	Papua New Guinea	4
	Samoa	1
MIDDLE EAST	Solomon Islands	1
	Vanuatu	1
	Iran	5
	Israel	8
	Jordan	2
	Kuwait	1
	Lebanon	5
	Oman	6
	Saudi Arabia	3
	Syria	1
AFRICA	Turkey	36
	United Arab Emirates	7
	Botswana	1
	Cameroon	22
	Democratic Republic of the Congo	5
	Egypt	35
	Ethiopia	20
	Gabon	6
	Ghana	8
	Guinea	6
	Kenya	14
	Madagascar	5
	Malawi	5
	Mauritius	4
	Namibia	9
	Niger	5
	Nigeria	3
	Republic of Congo	1
	Rwanda	1
	Senegal	1
South Africa	17	
Tanzania	25	
Tunisia	5	
Uganda	8	
Zambia	14	
Others	6	
Total	6,993	

The number of researchers going abroad to do research, irrespective of their length of stay.



STUDENTS FROM ABROAD

(As of May 1, 2010)

Country / Region	Classification	Under graduates		Graduates				Research Students etc*	Total
		Auditors	Master's Course	Doctoral Course	Professional Course	Auditors			
ASIA	Bangladesh			1	11			3	15
	Cambodia			1	4				5
	China	73	10	213	188	30	8	102	624
	India				14			4	18
	Indonesia	3		10	37	1		5	56
	Korea	47	8	47	102	7	3	22	236
	Laos				4				4
	Malaysia	1		7	19			3	30
	Mongolia	5		3	1			1	10
	Myanmar				3			5	8
	Nepal		1		14			1	16
	Pakistan			2				1	3
	Philippines			2	15			3	20
	Singapore	3	1	1	2				7
	Sri Lanka			1	5				6
	Taiwan		2	23	33	4	3	9	74
Thailand	5	4	6	28		2	5	50	
Viet Nam	2		7	30	2	7		48	
NORTH AMERICA	Canada		2	3	4			1	10
	U.S.A.		3	6	7		2	6	24
LATIN AMERICA	Argentina	1			3				4
	Bolivia			1					1
	Brazil			5	9		1	3	18
	Chile			1	2			1	4
	Colombia				3				3
	Costa Rica							1	1
	Dominican Republic							1	1
	Ecuador			1					1
	Guatemala			1					1
	Honduras			1					1
	Jamaica				1				1
	Mexico		2	2	5		1		10
	Nicaragua			1					1
	Peru			1	1			2	4
	Trinidad and Tobago							1	1
Uruguay			1					1	
Venezuela			1	1				2	
EUROPE	Azerbaijan			1				2	3
	Belarus	1						1	2
	Belgium				2		1	1	4
	Bosnia and Herzegovina			1					1
	Bulgaria			2	1			3	6
	Czech				1				1
	Estonia				1				1
	Finland		1		1		1		3
	France		5		13		5	2	25
	Georgia	1						1	2
	Germany		11		3		3	1	18
	Greece			1	2				3
	Hungary			1				2	3
	Italy				1			1	2
Kazakhstan				1				1	

*Including research fellows

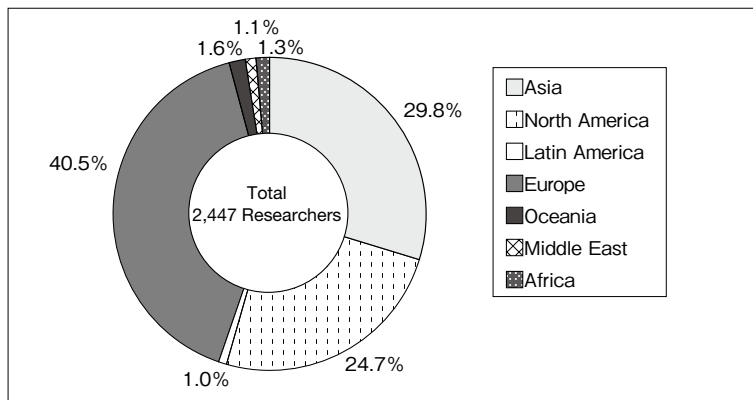


Country/Region	Classification	Under graduates	Graduates				Research Students etc*	Total	
			Auditors	Master's Course	Doctoral Course	Professional Course			Auditors
	Kyrgyz	1		1				2	
	Latvia				1			1	
	Lithuania						1	1	
	Luxembourg				1	1		2	
	Macedonia				1			1	
	Malta						1	1	
	Netherlands		4	2	1	4	1	12	
	Norway				1			1	
	Poland		1		2		2	5	
	Romania			1	1			2	
	Russia			3	7		2	12	
	Serbia			1				1	
	Slovakia				1			1	
	Spain		1	1			1	3	
	Sweden		2			1	1	4	
	Switzerland		2			2	1	5	
	Ukraine			2	1			3	
	U.K.		3	3	2		2	10	
	Uzbekistan	1			1			2	
OCEANIA	Australia		1	1	3			5	
	New Zealand			1	1		1	3	
	Samoa			1				1	
	Solomon Islands						1	1	
MIDDLE EAST	Afghanistan			1	1			2	
	Bahrain				1			1	
	Iraq				1			1	
	Iran					10	1	11	
	Israel		1		1		2	4	
	Jordan			1	1			2	
	Kuwait			1				1	
	Lebanon				1		1	2	
	Oman					1		1	
	Saudi Arabia						1	1	
	Syria					1	1	2	
	Turkey					2		2	
Yemen			1			2	3		
AFRICA	Cameroon			1				1	
	Congo, D.R.					3		3	
	Cote d'Ivoire			1				1	
	Egypt			1	14		3	18	
	Ethiopia				4		1	5	
	Ghana				1		1	2	
	Kenya			2	2			4	
	Libya					1		1	
	Madagascar					1	1	2	
	Mali				1			1	
	Morocco				1			1	
	Mozambique			1				1	
	Nigeria			1	1			2	
	South Africa					2		2	
	Sudan					1	1	2	
	Swaziland						1	1	
	Tanzania					2	1	3	
	Tunisia				1	2		3	
Zambia		1		1	1		3		
Zimbabwe				1			1		
Total		145	65	386	653	44	45	225	1,563



EXCHANGE OF RESEARCHERS AND STUDENTS

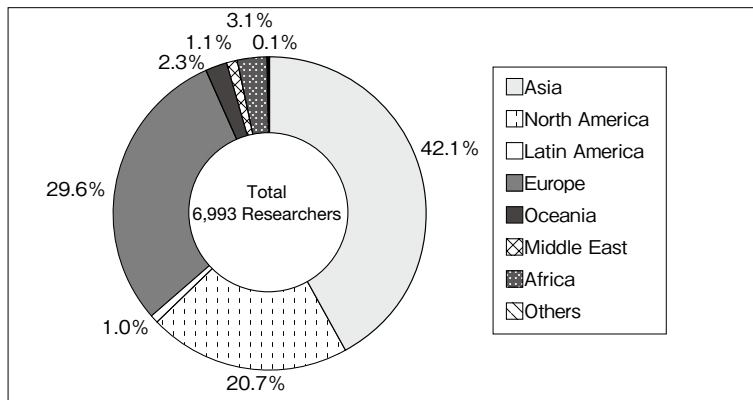
Researchers from Abroad (April 2009-March 2010)



Top 5 countries / regions

U.S.A.	547
China	232
Korea	193
France	183
U.K.	178

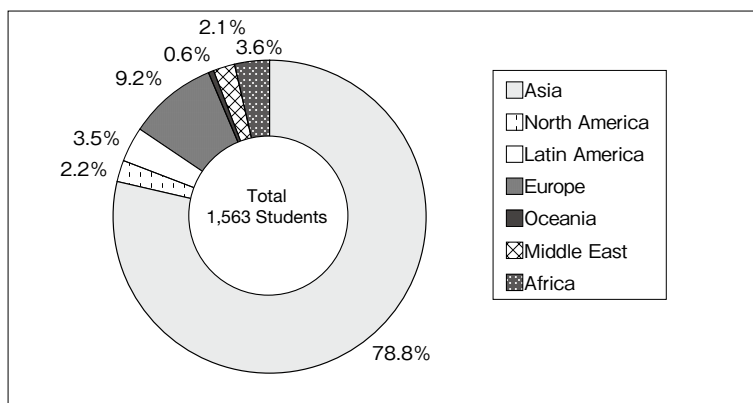
Researchers Going Abroad (April 2009-March 2010)



Top 5 countries / regions

U.S.A.	1,290
China	819
Korea	451
Thailand	377
Germany	376

Students from Abroad (As of May 1, 2010)



Top 5 countries / regions

China	624
Korea	236
Taiwan	74
Indonesia	56
Thailand	50



KYOTO UNIVERSITY INTERNATIONAL SYMPOSIA

	Date	Place	Title	Remarks
1	Jan 13, 2001	Santa Clara, CA, USA	Network and Media Computing	
2	Nov 28, 2001 Nov 30, 2001	London, Edinburgh, UK	The Changes in the Japanese Economy Facing the New Century	Jointly organized with the University of London and the University of Edinburgh
3	Sept 3-4, 2002	Montreal, CANADA	Post-Petrofuels in the 21st Century – Prospects in the Future of Biomass Energy	
4	Dec 6-7, 2003	Ann Arbor, MI, USA	Self, Cognition, and Emotion	Jointly organized with the University of Michigan
5	Jan 27-29 2005	SINGAPORE	Regulation of Cell Fate and Cell Function	Jointly organized with the National University of Singapore
6	Oct 8-9, 2005	Beijing, CHINA	Plant Sciences in Japan and China – from Genomics to Breeding	Jointly organized with Chinese Academy of Agricultural Sciences
7	Nov 23-24 2005	Bangkok, THAILAND	Coexistence with Nature in a ‘Glocalizing’ World – Field Science Perspectives	Jointly organized with Chulalongkorn University, Thammasat University and Kasetsart University
8	Nov 23-25 2006	Bangkok, THAILAND	Towards Harmonious Coexistence within Human and Ecological Community on this Planet	
9	June 22-23 2007	Kyoto, JAPAN	Integrating Global Environmental Studies towards Human Security	
10	July 26-28 2007	Bandung, INDONESIA	Active Geosphere Science	Jointly organized with Bandung Institute of Technology
11	Oct 9-11 2008	Shanghai, China	Frontier Bioscience in Modern Medicine	Special support from Fudan University
12	Dec 5-6, 2008	Kyoto, JAPAN	Transforming Racial Images: Analyses of Representations	
13	Dec 11-13 2009	Kyoto, JAPAN	New Horizons of Academic Visual-Media Practices	
14	June 24, 2010	Xi'an, China	High Resolution Digitization of Asian World Heritage	Special support from Xi'an Jiaotong University
15	Sept 19-20 2010	Nagoya, JAPAN	Biodiversity, Zoos and Aquariums "The Message from Animals"	Jointly organized with Port of Nagoya Public Aquarium and Nagoya Higashiyama Zoo

LIST OF OVERSEAS OFFICES AND FACILITIES

(As of October 1, 2010)

	Affiliation	Name	Location	Year Established
1	Graduate School of Economics	Kyoto University – Renmin University joint Research Center	Beijing, China	2008
2	Graduate School of Engineering	Cooperative Research and Education Center for Environmental Technology at Tsinghua University	Shenzhen, China	2005
3	Graduate School of Engineering	Global Center of Excellence Kyoto University – Institut Teknologi Bandung for GCOE Joint Research and Education Center	Bandung, Indonesia	2008
4	Graduate School of Engineering	the Joint Education and Research Centre on AIT Campus under the Global Centre of Excellence, Kyoto University	Pathumthani, Thailand	2008
5	Graduate School of Engineering	Global Center of Excellence Kyoto University – the Municipal Corporation of Greater Mumbai (MCGM) for GCOE Joint Research and Education Center	Mumbai, India	2009
6	Graduate School of Engineering	Global Centre of Excellence Kyoto University – Centre for Maritime Studies National University of Singapore Transport Logistics Joint Research Centre	Singapore, Singapore	2008
7	Graduate School of Engineering	Kyoto University – University of Malaya Overseas Base in Malaysia for Education and Research	Kuala Lumpur, Malaysia	2010
8	Graduate School of Science	Satellite Office at Chulalongkorn University	Bangkok, Thailand	2003
9	Graduate School of Science/ Research Institute for Sustainable Humanosphere	Satellite Office at Institut Teknologi Bandung	Bandung, Indonesia	2003
10	Graduate School of Science, Observatories	CHAIN Peru Station	Ica, Lima, Peru	2010
11	Graduate School of Agriculture	Khon Kean Research Office of the Graduate School of Agriculture, Kyoto University	Khon Kean, Thailand	1996
12	Graduate School of Agriculture	Japanese Research – Team Laboratory, Kinabalu Park Headquarters	Kota Kinabalu, Malaysia	1995
13	Graduate School of Agriculture	Japanese Research – Team Laboratory, Deramakot Forest Reserve	Sandakan, Malaysia	2003
14	Graduate School of Asian and African Area Studies	Ethiopia Field Station	Addis Ababa, Ethiopia	2003
15	Graduate School of Asian and African Area Studies	Cameroon Field Station	Ndongo Village, Cameroon	2003
16	Graduate School of Asian and African Area Studies	Nairobi Field Station	Nairobi, Kenya	2003
17	Graduate School of Asian and African Area Studies	Zambia Field Station	Lusaka, Zambia	2003
18	Graduate School of Asian and African Area Studies	Tanzania Field Station	Dar es Salaam, Tanzania	2003



	Affiliation	Name	Location	Year Established
19	Graduate School of Asian and African Area Studies	Namibia Field Station	Windhoek, Namibia	2008
20	Graduate School of Asian and African Area Studies	Indonesia Pekanbaru Field Station	Pekanbaru, Indonesia	2010
21	Graduate School of Asian and African Area Studies/Center for Southeast Asian Studies	Laos Field Station	Vientiane, Laos	2002
22	Graduate School of Asian and African Area Studies/Center for Southeast Asian Studies	Makassar Field Station	Makassar, Indonesia	2003
23	Graduate School of Asian and African Area Studies/Center for Southeast Asian Studies	Myanmar Field Station	Yangon, Myanmar	2003
24	Graduate School of Global Environmental Studies	Contact Office of Research and Education of Graduate School of Global Environmental Studies	Hue, Vietnam	2006
25	Graduate School of Global Environmental Studies	Hanoi Office	Hanoi, Vietnam	2008
26	Graduate School of Global Environmental Studies	Hue Office	Hue, Vietnam	2008
27	Graduate School of Global Environmental Studies	Shenzhen Office	Shenzhen, China	2008
28	Institute of Advanced Energy	Thai Research Station Collaborative Research Laboratory	Pathumthani, Thailand	2003
29	Research Institute for Sustainable Humansphere	Equatorial Atmosphere Radar	Bukittinggi, Indonesia	2001
30	Research Institute for Sustainable Humansphere	RISH-RDUB Satellite Office	Bogor, Indonesia	2004
31	Research Institute for Sustainable Humansphere	MHP Acacia Research Office	Muaraenim, Indonesia	2005
32	Disaster Prevention Research Institute	Seattle Satellite Office	Seattle, USA	1996
33	Primate Research Institute	Research Project on bonobos in the Luo Reserve	Djolu, Congo	1973
34	Primate Research Institute	Bossou-Nimba Research Station	Bossou, Guinea	1976
35	Primate Research Institute	Kalinzu Forest Research Project by the Primate Research Institute	Bushenyi, Uganda	1997
36	Center for Southeast Asian Studies	Bangkok Liaison Office	Bangkok, Thailand	1963
37	Center for Southeast Asian Studies	Jakarta Liaison Office	Jakarta, Indonesia	1970
38	Office of Society-Academia Collaboration for Innovation	Kyoto University Liaison Office at Tsinghua University	Beijing, China	2006
39	Office of Society-Academia Collaboration for Innovation	Euro Representative of Kyoto University SACI	London, U. K.	2009
40	Center for Ecological Research	Field Station for Tropical Forest and Biodiversity Studies	Miri, Malaysia	1991
41	Center for Integrated Area Studies	CIAS Lima Office	Lima, Peru	2006
42	Wildlife Research Center	Kyoto University African Ape Expedition	Kigoma, Tanzania	1965
43	Wildlife Research Center	African Anthropological and Biological Field Research Center	Arusha, Tanzania	2006
44	Wildlife Research Center	Kuala Sungai Danum Research Station	Danum Valley, Malaysia	2009
45	Organization for the Promotion of International Relations (OPIR)	Vietnam National University Hanoi – Kyoto University Collaboration Office	Hanoi, Vietnam	2010



KYOTO UNIVERSITY

CONTACT

For Researchers

International Affairs Division

Yoshida-Honmachi, Sakyo-ku, Kyoto 606-8501

Tel: +81-75-753-2047

Fax: +81-75-753-2042

E-mail: koryu52@mail.adm.kyoto-u.ac.jp

URL: <http://www.kyoto-u.ac.jp>

For Students

Foreign Student Division

Yoshida-Honmachi, Sakyo-ku, Kyoto 606-8501

Tel: +81-75-753-2543

Fax: +81-75-753-2562

E-mail: ryugak78@mail.adm.kyoto-u.ac.jp

URL: <http://www.kyoto-u.ac.jp>