

Foreword

In the 21st century, the human race faces numerous urgent global crises such as global warming, environmental degradation and the depletion of natural resources. The emergence of such problems, which represent a grave threat to future generations, is an unfortunate result of the endless pursuit of economic growth, excessive consumption, and the perpetual human demand for a “better and richer life.”

As experts in the science and technology fields work on solutions to overcome such impending global catastrophes, we must also apply the wisdom of the humanities and social sciences to develop a new and durable global culture in which our tendencies toward greed and excess are replaced by a wise sense of prudence and modesty.

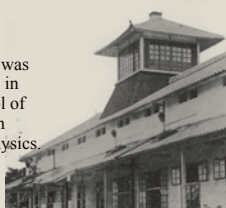
We have arrived at a juncture of human development where we must share the wealth of wisdom accumulated by all human beings to form a new body of knowledge which will enable us to survive on this planet, and ultimately realize and sustain a harmonious global society. Kyoto University is committed to playing its part in that endeavor.

KYOTO

History of Kyoto University

1869

The Seimikyoku was built (May 1869) in Osaka as a school of higher learning in chemistry and physics.



1889

Known at this point as the Third Higher School, the institution was relocated to Kyoto in August 1889.



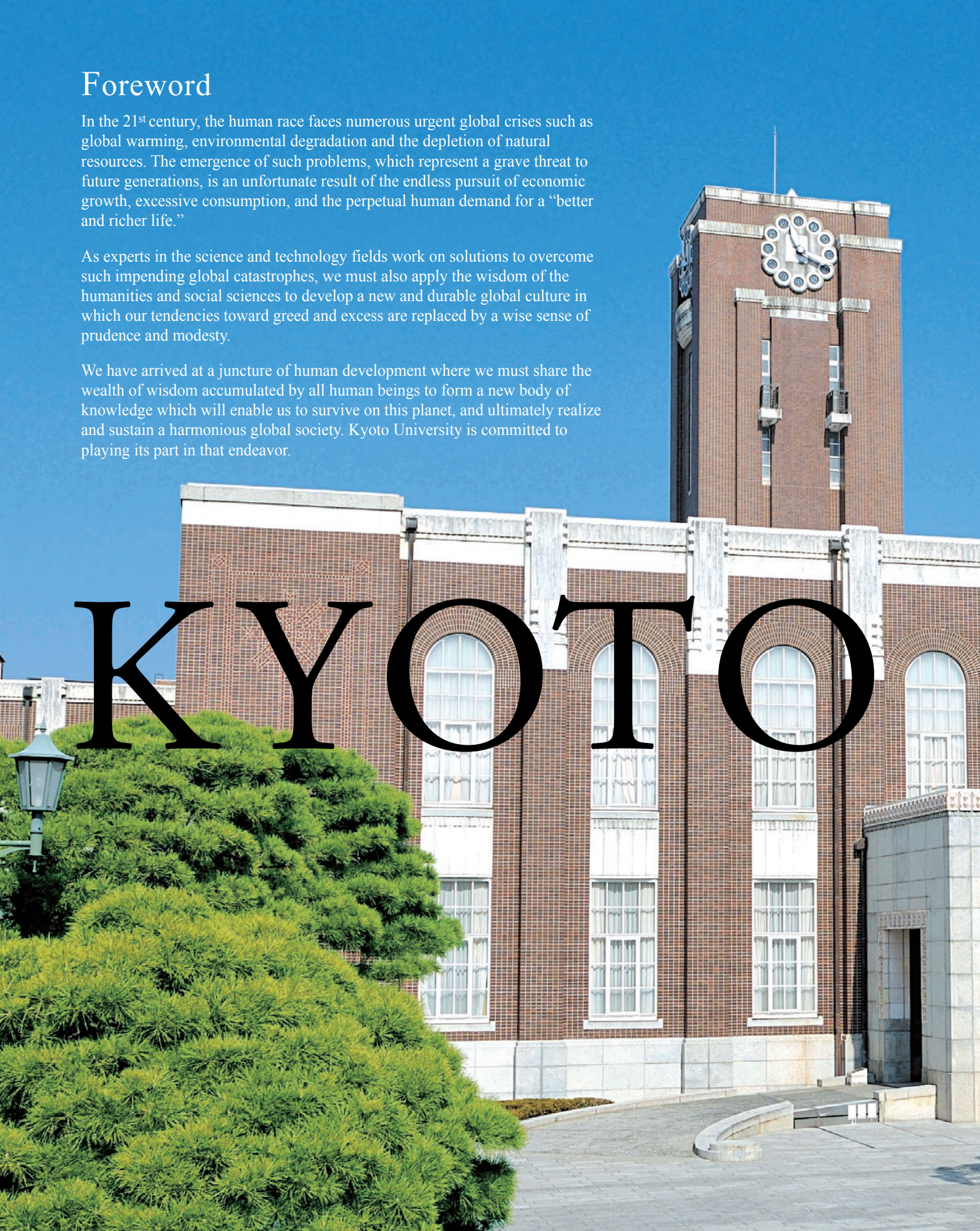
1897

On June 18th, 1897, the institution was reestablished as the Kyoto Imperial University. The main gates, built around this time remain in use today.



1919

Completed in 1898, students of the first departments of study at the Kyoto Imperial University – civil and mechanical engineering – conducted their studies here. The colleges were reorganized into five faculties in 1919.



UNIVERSITY



1925

Students stand at the side entrance of the current clock tower building after its completion in 1925.



1947

Renamed Kyoto University in 1947.

1954

Yoshida campus circa 1954. Note the construction of a new east wing and the demolition of the boiler room chimney.



2004

Kyoto University and all national universities incorporated in 2004.