

Admission Information for Researchers & Students



Admission

For international researchers:

Those who wish to undertake research at one of Kyoto University's faculties, graduate schools, institutes or centers may apply for the status of "guest scholar" (*shouhei gaikokujin gakusha*) or "guest research associate" (*gaikokujin kyoudou kenkyusha*).

To qualify for guest scholar or guest research associate status, the applicant must first select and contact an advisor in the relevant faculty, graduate school, institute or center using the university's website, and seek the advisor's approval. Once approval has been granted, the applicant must submit an admission form and the necessary documents to the relevant department.

For international students:

There are two categories of international student at Kyoto University: "regular students" and "non-regular students." Degree-seeking undergraduate and graduate students are categorized as regular students, while non-degree seeking students such as research students (*kenkyusei*), exchange students (*tokubetsu chokou gakusei* and *tokubetsu kenkyu gakusei*) and short-term international students (*tanki kouryu gakusei*) are classified as non-regular students. Japanese Government (*Monbukagakusho*: MEXT) Scholarship students and privately financed international students may enroll as either regular students or non-regular students.

1) Japanese Government (*Monbukagakusho*: MEXT) Scholarship Students

The Japanese Government (*Monbukagakusho*: MEXT) Scholarship provides a monthly stipend, exemption of examination, admission and tuition fees, a round-trip ticket and other benefits for international students to study in Japan. Applications should be made through the appropriate Japanese embassy or consulate, or through a university in Japan. For further details, please visit the website of the Japan Student Services Organization (JASSO) at: www.jasso.go.jp/study_j/index_e.html

2) Privately Financed International Students

In general, the selection process for privately financed international students is conducted by Kyoto University using fundamentally the same criteria as is used for domestic applicants. Some faculties and graduate schools, however, have special selection processes for privately financed international students. For details, please refer to the "Admissions Guide for International Applicants 2011/2012" available at: www.kyoto-u.ac.jp/en/issue/ryugaku_annai

3) Exchange Students

Kyoto University offers two types of exchange program, the Kyoto University International Education Program (KUINEP) and the Kyoto University General Exchange Program. Both programs last for a maximum of one year, and are open to international students from institutions with a student exchange agreement with KU. Applications should be submitted to KU via the international office of the home institution. Further details are available at: www.kyoto-u.ac.jp/en/education/international/admissions/program/tanki.htm





4) Short-Term International Students

Short-term international student status is available to students who wish to study at Kyoto University and receive academic guidance from its faculty for a period of up to three months. This status is not appropriate for those who wish to enroll in the regular courses and receive credits. Applications should be made on the student's behalf by their academic department at the home institution, and should be made directly to the prospective department at KU. For details, please refer to:

www.kyoto-u.ac.jp/en/education/international/admissions/program/short_term.htm

For details on particular programs, admission requirements, selection, the awarding of degrees, etc., please direct your inquiries to the relevant departmental administration offices. Contact details can be found at:

www.kyoto-u.ac.jp/en/education/international/org/office.htm

Most visa applications, aside from those for the temporary visitor's visa, will require a "Certificate of Eligibility" issued by the Immigration Bureau of the Ministry of Justice in Japan. For more information on obtaining the correct visa, please consult with your host professor once your travel to Japan has been finalized. For details, please refer to:

www.opir.kyoto-u.ac.jp/e/information/beforecoming.html

For international students:

A temporary visitor's (*tanki taizai*) visa will be necessary to enter Japan and sit the Kyoto University entrance examinations. Successful candidates must then obtain a college student (*ryugaku*) visa to study at KU (with the exception of short-term international students). A certificate (or other official notification) of acceptance from KU, a valid passport and other relevant documents are required to apply for a college student (*ryugaku*) visa.

Visa Procedures

In order to study in Japan, an appropriate visa is required. The visa must be obtained prior to arrival through the appropriate Japanese embassy or consulate in the applicant's country.

For international researchers:

The type of visa required will depend on the applicant's research activity and/or length of stay. International researchers visiting Kyoto University are usually awarded one of the following three types of visa: "Professor" (*kyouju*), "Cultural Activities" (*bunka katsudo*) or "Temporary Visitor" (*tanki taizai*).

Insurance

All foreign nationals residing in Japan for more than one year must take out a Japanese medical insurance policy. There are two types of policy: those which are taken out through an employer, and the national health insurance scheme for those who are not employed by a company which provides an insurance policy.

Students with a temporary visitor's (*tanki taizai*) visa or a college student (*ryugaku*) visa (with a period of stay less than a year) are not eligible to join the national health insurance scheme, and are therefore highly recommended to enroll in an overseas travel accident insurance policy (or other similar policy) before coming to Japan.





Accommodation

Kyoto University has four housing facilities for international researchers and students located at Shugakuin, Uji, Ohbaku and Misasagi.

For international researchers:

Applications for accommodation at the International Houses must be made at least four months in advance of the intended move-in month, and must be made through the researcher's host professor or a staff member of the department to which the researcher belongs. The tenancy period for researchers should not be less than one month, nor exceed one year. Extensions will not be granted. Please consult with your host professor to arrange accommodation in Japan prior to arrival.

Further details can be found at:

www.opir.kyoto-u.ac.jp/e/i_office/admission.html

For international students:

The move-in periods for the International Houses are April and October. Applications are accepted in January and July (three months prior to move-in). The tenancy period for students is either one year or six months, and may not be extended in either case. Those who wish to apply should make arrangements with their faculty/graduate school offices in advance.

As the number of rooms available and the length of tenancy possible at the Kyoto University International Houses are limited, many international students and researchers choose to live in private housing, such as private apartments.



Japanese Language Education

The International Center offers Japanese language classes for international students and researchers at Kyoto University. The classes aim to help students and researchers acquire language skills they need for their daily life in Japan and/or for their academic activities.

Further details are available at:

www.kyoto-u.ac.jp/en/education/international/overseas/japanese

For international students:

Please note that with the exception of classes for English-taught degree programs, classes at Kyoto University are generally taught in Japanese unless specified otherwise. Those who wish to enroll in an undergraduate program or a master's program must have sufficient Japanese language proficiency upon enrollment. KU does not have an independent faculty for Japanese language study.

Tuition Exemption & Scholarships

For international students:

Students enrolled in regular (degree-seeking) undergraduate and graduate courses who experience financial difficulty while maintaining excellent academic records may be eligible for a full or half tuition waiver. In addition, approximately 50 scholarships for privately financed international students are available through the university every year. The scholarships are offered by various different organizations and range from approximately ¥30,000 to ¥180,000 per month. Applications are generally accepted following admission to the university.

Tuition and Fees

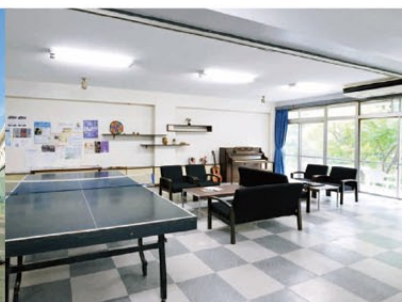
(As of April 2011)

	Exam Fee	Admission Fee	Tuition
Undergraduate Students	¥17,000	¥282,000	¥535,800 per year
Graduate Students	¥30,000*	¥282,000	¥535,800 per year
Law School Students	¥30,000	¥282,000	¥804,000 per year
Research Students	¥9,800	¥84,600	¥29,700 per month

*In certain circumstances, the fee may be reduced to ¥10,000 for applicants who are screened based on submitted materials etc. with no written examination. For specific details, please check the admission guidelines of the graduate school you wish to enter.



Misasagi International House



Ohbaku International House