

KYOTO UNIVERSITY

2006/2007

FACTS AND FIGURES

CONTENTS

Chronological Table	1
Organizations	3
University Staff and Students	5
Finance	6
Academic Exchange Memoranda	7
Researchers From Abroad	9
Researchers Going Abroad	10
Students from Abroad	11
Overseas Stations	13
University Facilities	15
Japanese Nobel Laureates	16
Kyoto University International Symposia	16
Campus Map	17
How to reach Kyoto University	18

CHRONOLOGICAL TABLE

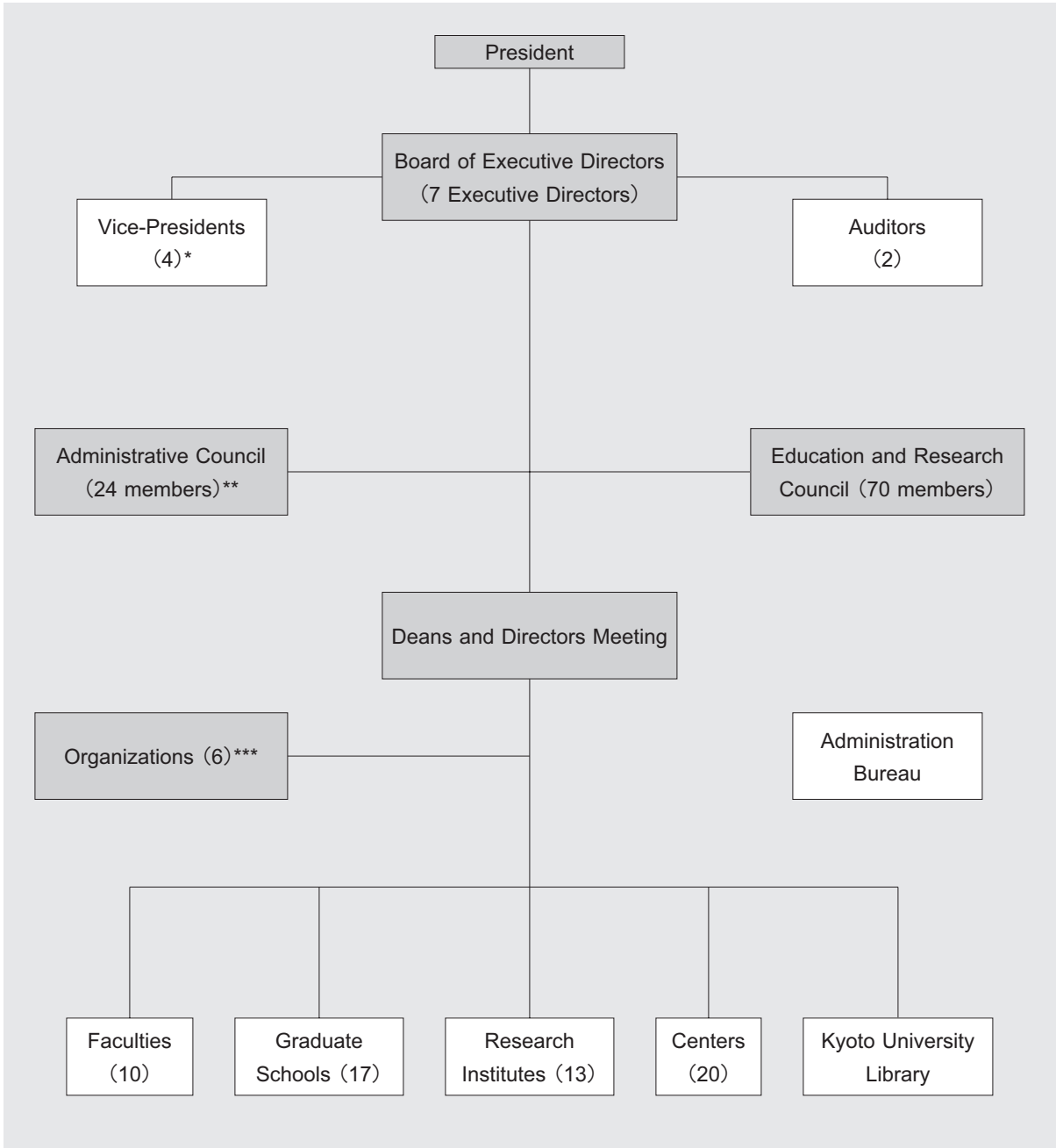
Year	Contents
1897	Founded as Kyoto Imperial University. The College of Science and Engineering was established.
1899	Colleges of Law and Medicine were established. The University Library and the University Hospital were established.
1906	The College of Letters was established.
1914	The College of Science and Engineering was divided into two, the College of Science and the College of Engineering.
1919	Colleges were reorganized into five faculties under the new University Ordinance. The Faculty of Economics was established.
1923	The Faculty of Agriculture was established.
1926	The Institute for Chemical Research was established.
1939	The Institute for Research in Humanities was established.
1941	The Chest Disease Research Institute and the Institute of Atomic Energy were established.
1944	The Wood Research Institute was established.
1946	The Research Institute for Food Science was established.
1947	Renamed KYOTO UNIVERSITY.
1949	Reorganized on the four-year schooling basis (with the exception of six years for medicine) under the new school education system. The Faculty of Education was established. The Branch School was established for general education of the freshmen and sophomores of the faculties.
1951	The Disaster Prevention Research Institute was established.
1953	Graduate courses under the new system were opened. The Yukawa Institute for Theoretical Physics was established.
1954	The Branch School was renamed the College of Liberal Arts and Sciences.
1956	The Institute for Virus Research was established.
1960	The Faculty of Pharmaceutical Sciences was established.
1962	The Institute of Economic Research was established.
1963	The Research Institute for Mathematical Sciences and the Research Reactor Institute were established.
1965	The Center for Southeast Asian Studies was established.
1966	The Center for Student Health was established.
1967	The Primate Research Institute was established.
1969	The Data Processing Center was established.
1971	The Radioisotope Research Center was established.
1972	The Research Center for Sports Science was established.
1975	The College of Medical Technology was established.
1976	The Plasma Physics Laboratory and the Radiation Biology Center were established.
1977	The Environment Preservation Center and the Center for Archaeological Operations were established.
1978	The Educational Center for Information Processing was established.
1980	The Research Center for Biomedical Engineering was established.
1981	The Radio Atmospheric Science Center was established.
1986	The Center for African Area Studies was established.
1988	The Center for Molecular Biology and Genetics was established.
1990	The Center for Student Exchange was established.
1991	The Graduate School of Human and Environmental Studies, and the Center for Ecological Research were established.



Year	Contents
1992	The College of Liberal Arts and Sciences was reorganized and renamed the Faculty of Integrated Human Studies.
1994	The Research Center for Higher Education was established.
1995	The Venture Business Laboratory was established.
1996	The Graduate School of Energy Science was established. The Institute of Atomic Energy and the Plasma Physics Laboratory were merged into the Institute of Advanced Energy. The Student Counseling Center was established.
1997	The Kyoto University Museum was established. The Educational Center for Information Processing was reorganized and renamed the Center for Information and Multimedia Studies.
1998	The Graduate School of Asian and African Area Studies and the Graduate School of Informatics were established. The Chest Disease Research Institute was reorganized and renamed the Institute for Frontier Medical Sciences. The Research Center for Biomedical Engineering was closed.
1999	The Graduate School of Biostudies and the Counseling Center were established. The Student Counseling Center was closed.
2000	The Radio Atmospheric Science Center was reorganized and renamed the Radio Science Center for Space and Atmosphere. The University Archives was established.
2001	The International Innovation Center was established. The Research Institute for Food Science was closed. The Center for Data Collection and Analysis was established.
2002	The Graduate School of Global Environmental Studies was established. The Center for Data Processing and the Center for Information and Multimedia Studies were reorganized and renamed the Academic Center for Computing and Multimedia Studies. The Research Center for Low Temperature and Materials Sciences, The Fukui Institute for Fundamental Chemistry were established.
2003	Research Center for Sports Science was closed. Seto Marine Biological Laboratory, University Forests, Subtropical Plant Institute, Fisheries Research Station were merged into the Field Science Education and Research Center. Research Center for Higher Education was reorganized and renamed Center for the Promotion of Excellence in Higher Education. Institute for the Promotion of Excellence in Higher Education and Law School were established. The College of Medical Technology was merged into the Graduate School of Medicine.
2004	Kyoto University incorporated in accordance with the National University Corporation Law.
	Wood Research Institute and Radio Science Center for Space and Atmosphere were unified as the Research Institute for Sustainable Humanosphere. The Center for Southeast Asian Studies was given to Institute status. The Center for Molecular Biology and Genetics and Center for Data Collection and Analysis were closed.
2005	Organization for the Promotion of International Relations , Environment, Safety, and Health Organization, International Innovation Organization, Institute for Information Management and Communication, and Library Network were established. The Center for Student Exchange was reorganized and renamed the International Center.
2006	The School of Government was established. The Graduate School of Management was established. The Center for Integrated Area Studies was established. The Nano Medicine Merger Education Unit was established. The Institute of Sustainability Science was established.



ORGANIZATION CHARTS



* Each of them is in charge of a different area, one of which is International Relations.

** 24 members, half of whom are Kyoto University Faculty and Staff.

*** One of 6 Organizations is the Organization for the Promotion of International Relations.



ORGANIZATIONAL LISTING

Organizations (6)	Institute for the Promotion of Excellence in Higher Education
	Environment, Safety, and Health Organization
	International Innovation Organization
	Organization for the Promotion of International Relations
	Institute for Information Management and Communication
	Library Network
Graduate Schools (17)	Graduate School of Letters
	Graduate School of Education
	Graduate School of Law
	Graduate School of Economics
	Graduate School of Science
	Graduate School of Medicine
	Graduate School of Pharmaceutical Sciences
	Graduate School of Engineering
	Graduate School of Agriculture — Experimental Farm
	Graduate School of Human and Environmental Studies
	Graduate School of Energy Science
	Graduate School of Asian and African Area Studies
	Graduate School of Informatics
	Graduate School of Biostudies
Graduate School of Global Environmental Studies	
Faculties (10)	School of Government
	Graduate School of Management
	Faculty of Integrated Human Studies
	Faculty of Letters
	Faculty of Education
	Faculty of Law
	Faculty of Economics
	Faculty of Science
	Faculty of Medicine — University Hospital
Faculty of Pharmaceutical Sciences	
Research Institutes (13)	Faculty of Engineering
	Faculty of Agriculture
	Institute for Chemical Research
	Institute for Research in Humanities
	Institute for Frontier Medical Sciences
	Institute of Advanced Energy
	Research Institute for Sustainable Humanosphere
	Disaster Prevention Research Institute
	Yukawa Institute for Theoretical Physics
	Institute for Virus Research
	Institute of Economic Research
	Research Institute for Mathematical Sciences
	Research Reactor Institute
Primate Research Institute	
Centers (20)	Center for Southeast Asian Studies
	Academic Center for Computing and Media Studies
	Radiation Biology Center
	Center for Ecological Research
	Center for Integrated Area Studies
	Radioisotope Research Center
	Environment Preservation Center
	International Center
	Center for the Promotion of Excellence in Higher Education
	Kyoto University Museum
	International Innovation Center
	Research Center for Low Temperature and Materials Sciences
	Field Science Education and Research Center
	Fukui Institute for Fundamental Chemistry
	Center for Student Health
	Counseling Center
	Kyoto University Archives
	Nano Medicine Merger Education Unit
Institute of Sustainability Science	
Center for Archaeological Operations	
Center for African Area Studies	



UNIVERSITY STAFF AND STUDENTS

UNIVERSITY STAFF (As of May 1, 2006)

Position	Number
President	1
Executive Directors	7
Vice-Presidents	4
Auditors	2
Professors	992
Associate Professors	779
Lecturers	157
Assistant Professors	950
Subtotal	2,892
Non-teaching Staff	2,239
Total	5,131

ENROLLMENT (As of each May 1)

Academic Year	Undergraduates	Graduates	Total
2006	13,278	9,420	22,698
2005	13,254	9,198	22,452
2004	13,275	8,828	22,103

College of Medical Technology	Regular Students	Credited Auditors	Total
	26	0	26

Note: College of Medical Technology was merged into the Graduate School of Medicine in 2003.
The present students will continue their studies until graduation.

NUMBER OF GRADUATES (Academic Years 2003, 2004, 2005)

Academic Year	Undergraduates	Graduates		Total
		Master's Course	Doctoral Course	
2005	2,830	2,148	729	5,707
2004	2,879	2,076	724	5,679
2003	3,035	2,038	680	5,753

NUMBER OF DEGREES CONFERRED

Academic Year	Master's Degree	Doctoral Degree
		New System
2005	2,148	904
2004	2,076	932
2003	2,038	904

Note: Doctoral Degree Old System (1897-1957) Total 9,651



FINANCE

Consolidated Revenues and Expenses in Net Assets

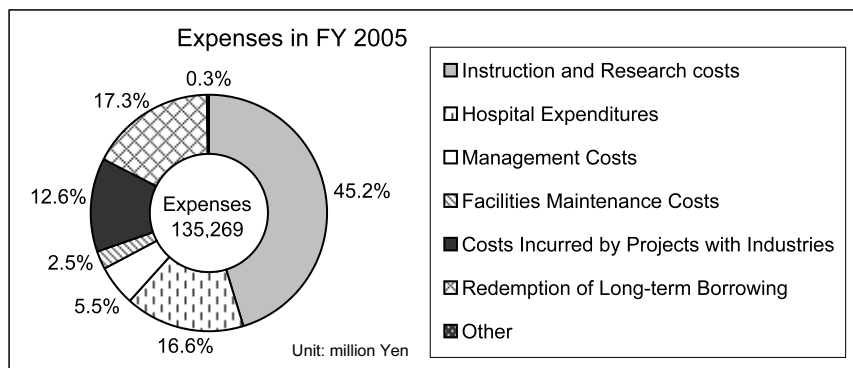
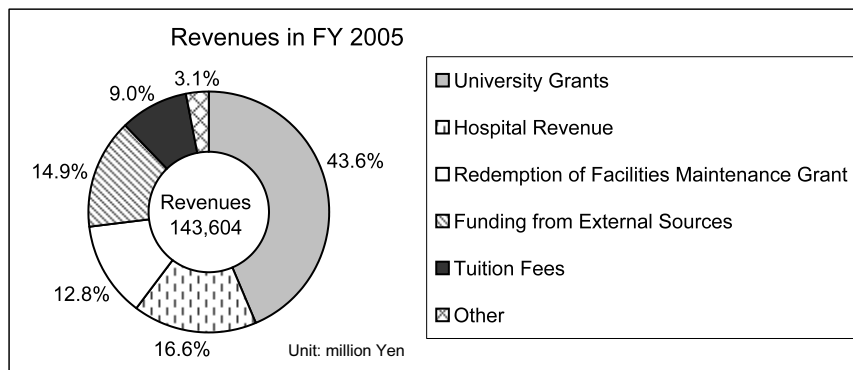
The following charts show Kyoto University's total revenues and expenses for fiscal year 2005. They also identify the major components of these revenues and expenses. Kyoto University has several revenue sources, the largest of which are University Grants. The largest expense is the Instruction and Research. All other expenses are incurred to support these two activities in addition to Kyoto University's public service activities.

Revenues in FY 2005

	Unit: million yen	US \$ 1=¥117	
University Grants	62,583	534.90	43.6%
Hospital Revenue	23,886	204.15	16.6%
Redemption of Facilities Maintenance Grant	18,378	157.08	12.8%
Funding from External Sources	21,333	182.33	14.9%
Tuition Fees	12,983	110.97	9.0%
Other	4,441	37.96	3.1%
Total	143,604	1,227.39	

Expenses in FY 2005

	Unit: million yen	US \$ 1=¥117	
Instruction and Research costs	61,164	522.77	45.2%
Hospital Expenditures	22,415	191.58	16.6%
Management Costs	7,422	63.44	5.5%
Facilities Maintenance Costs	3,370	28.80	2.5%
Costs Incurred by Projects with Industries	17,108	146.22	12.6%
Redemption of Long-term Borrowing	23,392	199.93	17.3%
Other	398	3.40	0.3%
Total	135,269	1,156.14	



ACADEMIC EXCHANGE MEMORANDA

Kyoto University has concluded the GENERAL MEMORANDA for academic exchange and cooperation with 68 universities, two unions of universities, one consortium of 18 universities and institutes, as indicated below.

(As of October 1, 2006)

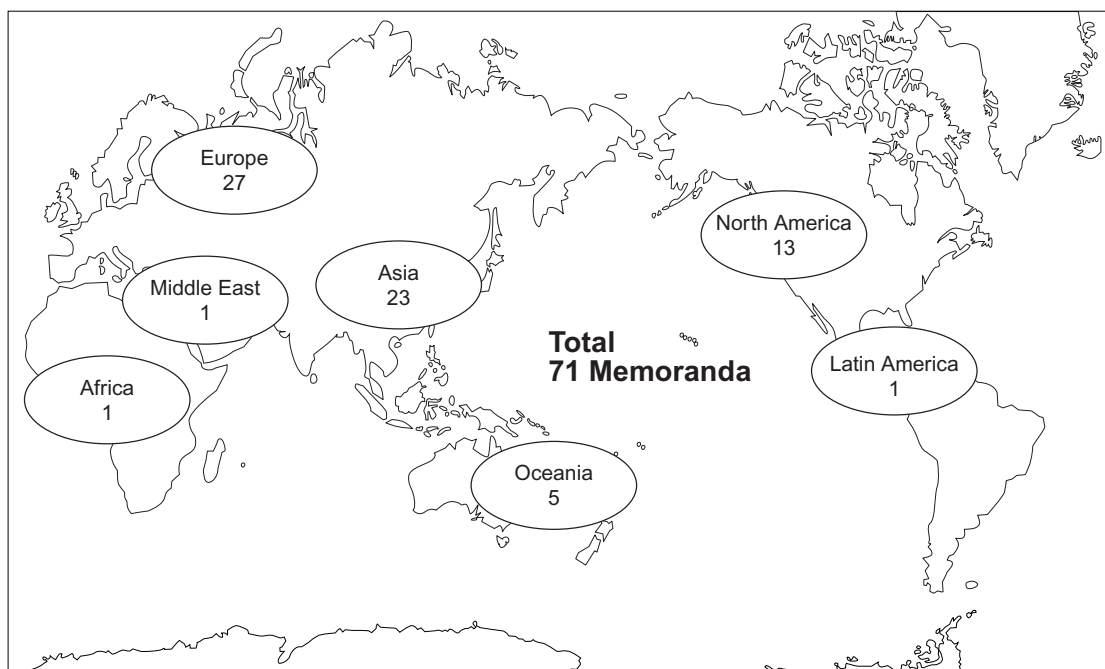
Countries	Universities	year of conclusion	☆
Australia	University of Queensland	1981	
	University of Melbourne	1997	☆
	University of New South Wales	1998	☆
	University of Sydney	1999	☆
Austria	University of Vienna	1993	☆
Belgium	Université catholique de Louvain	1997	☆
Canada	University of Toronto	1991	☆
	La Conférence des Recteurs et des Principaux des Universités du Québec	1994	☆
	University of Waterloo	2003	
China, P. R.	Northwest University (西北大学)	1980	
	Wuhan University (武汉大学)	1980	
	Peking University (北京大学)	1983	
	Tsinghua University (清华大学)	1998	
	Fudan University (復旦大学)	2002	
	Zhejiang University (浙江大学)	2003	
	University of Science and Technology of China (中国科学技术大学)	2005	
	Hong Kong University of Science and Technology (香港科技大学)	2005	☆
Nanjing University (南京大学)	2006		
Czech	Charles University	1990	
France	Université de Paris 7	1979	
	Union des Universités de Strasbourg (Strasbourg 1 - Université Louis Pasteur, Strasbourg 2 - Université Marc Bloch, Strasbourg 3 - Université Robert Schuman)	1996	☆
	Le Consortium des universités de Grenoble (Grenoble I - Université Joseph Fourier, Grenoble II - Université Pierre Mendès France, Grenoble III - Université Stendhal and Institut National Polytechnique de Grenoble)	2000	☆
Germany	Free University of Berlin	1984	☆
	Ludwig-Maximilians-University of Munich	1989	☆
	Rhenish Friedrich-Willhelm University of Bonn	1990	☆
	Rupert Charles University of Heidelberg	1990	☆
	Humboldt University Berlin	1998	☆
Indonesia	Bandung Institute of Technology	2006	
	Indonesian Institute of Sciences (LIPI)	2006	
Israel	Tel Aviv University	1999	☆
Italy	University of Siena	1989	
	University of Bologna	1995	
	University of Pisa	2001	
Korea, R.	Kyungpook National University (慶北大学校)	1984	☆
	Seoul National University (ソウル大学校)	1991	☆
	Yonsei University (延世大学校)	1998	☆
	Korea University (高麗大学校)	2002	☆
	Korea Advanced Institute of Science and Technology (韓国科学技術院)	2005	
Laos	National University of Laos	2002	
Mexico	University of Guadalajara	1983	☆
Netherlands	Leiden University	1997	☆
	University of Utrecht	1997	☆
New Zealand	University of Auckland	1997	☆
Russia	Moscow M. V. Lomonosov State University	1987	
Singapore	National University of Singapore	1999	☆
Sudan	University of Khartoum	2001	

Countries	Universities	year of conclusion	☆
Switzerland	Swiss Federal Institute of Technology Zurich	1989	
	University of Lausanne	1997	☆
Sweden	Stockholm University	1997	☆
	Uppsala University	1997	☆
	Royal Institute of Technology	2005	☆
Taiwan	National Taiwan University (国立台湾大学)	2005	☆
Thailand	Kasetsart University	1984	☆
	Thammasat University	2005	☆
	Chulalongkorn University	2005	☆
U. K.	University of Sussex	1989	☆
	University of Oxford	1991	
	University of Cambridge	1997	
	University of Nottingham	1999	
	University of Edinburgh	2005	
U. S. A.	Wayne State University	1985	
	Stanford University	1989	
	University of California	1990	☆
	Polytechnic University	1990	
	Brown University	1992	
	George Washington University	1998	☆
	Tufts University	1998	
	University of Pennsylvania	1999	☆
	University of Hawai'i	2003	☆
University of Michigan	2003		
Others	United Nations University (国際連合大学)	2005	

☆Student Exchange Agreement

Individual Faculties, Graduate Schools, Institutes and Centers of Kyoto University have also concluded agreements with 249 institutions abroad.

Distribution Map of the Counterpart Universities and Consortia



RESEARCHERS COMING FROM ABROAD

(April 2005–March 2006)

Countries & Regions		Number of Researchers	Countries & Regions		Number of Researchers	
ASIA	Bangladesh	4	EUROPE	Iceland	1	
	Cambodia	1		Ireland	2	
	China, P.R.	286		Italy	63	
	India	57		Kazakhstan	1	
	Indonesia	61		Lithuania	2	
	Korea, R.	215		Macedonia	1	
	Laos	2		Moldova	1	
	Malaysia	21		Netherlands	34	
	Mongolia	2		Norway	6	
	Myanmar	2		Poland	11	
	Nepal	1		Portugal	7	
	Pakistan	1		Romania	11	
	Philippines	11		Russia	72	
	Singapore	22		Serbia and Montenegro	1	
	Sri Lanka	5		Slovakia	1	
	Taiwan	125		Slovenia	4	
	Thailand	73		Spain	28	
Viet Nam	27	Sweden		22		
NORTH AMERICA	Canada	65		Switzerland	22	
	U.S.A.	573		Tajikistan	1	
LATIN AMERICA	Argentina	5		Ukraine	3	
	Bolivia	1		U.K.	164	
	Brazil	7		OCEANIA	Australia	45
	Colombia	4			New Zealand	7
	Ecuador	8		MIDDLE EAST	Iran	12
	Mexico	7			Iraq	1
Venezuela	1	Israel	18			
EUROPE	Armenia	13	Turkey	4		
	Austria	12	AFRICA	Algeria	1	
	Belgium	11		Egypt	7	
	Bosnia and Herzegovina	1		Ethiopia	2	
	Bulgaria	3		Guinea	1	
	Croatia	1		Kenya	1	
	Czech	4		Madagascar	4	
	Denmark	12		Morocco	3	
	Finland	6		South Africa	3	
	France	170		Sudan	2	
	Germany	152		Tanzania	5	
	Greece	2		Uganda	1	
	Hungary	14				
				Total	2,563	

The number of researchers from abroad doing research at Kyoto University, irrespective of their length of stay.



RESEARCHERS GOING ABROAD

(April 2005–March 2006)

Countries & Regions		Number of Researchers
ASIA	Bangladesh	8
	Bhutan	2
	Brunei	1
	Cambodia	5
	China, P.R.	501
	India	71
	Indonesia	173
	Korea, R.	419
	Laos	40
	Malaysia	104
	Mongolia	16
	Myanmar	22
	Nepal	9
	Pakistan	3
	Philippines	35
	Singapore	84
	Sri Lanka	6
	Taiwan	142
Thailand	260	
Viet Nam	90	
NORTH AMERICA	Canada	130
	U.S.A.	1,220
LATIN AMERICA	Argentine	3
	Brazil	25
	Chile	6
	Costa Rica	2
	Cuba	1
	Ecuador	1
	Jamaica	1
	Mexico	13
	Panama	2
Peru	3	
EUROPE	Armenia	1
	Austria	91
	Belgium	32
	Bulgaria	6
	Croatia	5
	Czech	47
	Denmark	19
	Estonia	1
	Finland	25
	France	294
	Germany	270
	Greece	23
	Hungary	28
	Iceland	1
	Ireland	11
	Italy	137
	Kazakhstan	5
	Lithuania	2
	Luxembourg	2
	Macedonia	1
	Netherlands	64
Norway	13	
Poland	21	
Portugal	22	

Countries & Regions		Number of Researchers
EUROPE	Romania	6
	Russia	41
	Serbia and Montenegro	2
	Slovakia	6
	Slovenia	6
	Spain	82
	Sweden	50
	Switzerland	80
	Tajikistan	1
	Ukraine	2
	U.K.	204
	Uzbekistan	2
OCEANIA	Australia	89
	Fiji	1
	Kiribati	1
	Marshall	1
	New Caledonia	1
	New Zealand	12
	Papua New Guinea	1
	Tonga	3
MIDDLE EAST	Afghanistan	6
	Iran	4
	Israel	6
	Lebanon	1
	Qatar	8
	Saudi Arabia	3
	Syria	1
	Turkey	41
AFRICA	United Arab Emirates	1
	Benin	2
	Botswana	1
	Burkina Faso	1
	Cameroon	4
	Central African R.	2
	Congo	3
	Egypt	10
	Ethiopia	8
	Gambia	1
	Ghana	2
	Guinea	1
	Kenya	11
	Lesotho	2
	Madagascar	4
	Morocco	3
	Namibia	3
	Niger	2
	Senegal	1
	South Africa	10
Sudan	1	
Tanzania	16	
Tunisia	2	
Uganda	8	
Zambia	4	
Zimbabwe	1	
Total		5,284

The number of researchers going abroad to do research, irrespective of their length of stay.

STUDENTS FROM ABROAD

(As of May 1, 2006)

Classification	Countries & Regions	Under graduates	Auditors	Graduates			Research Students etc*	Total
				Master's Course	Doctoral Course	Auditors		
ASIA	Bangladesh			1	15			16
	Bhutan			2				2
	Cambodia			3	1			4
	China, P.R.	84		130	177	7	86	484
	India			1	13		2	16
	Indonesia			7	27		3	37
	Korea, R.	28	2	42	100	3	17	192
	Laos				4			4
	Malaysia	2		3	4		4	13
	Mongolia	9		5	3		3	20
	Myanmar			3	2		2	7
	Nepal			2	6			8
	Pakistan				4			4
	Philippines			1	13		2	16
	Singapore		1				1	2
	Sri Lanka	1			4		1	6
	Taiwan	2		18	30		14	64
	Thailand	2	2	11	28		5	48
	Viet Nam	10		8	14		3	35
NORTH AMERICA	Canada		4	2		2	8	
	U.S.A		2	4	4	1	10	21
LATIN AMERICA	Argentina	2		3	2			7
	Bolivia				1			1
	Brazil			2	7		2	11
	Chile				1			1
	Colombia			3	2		1	6
	Ecuador						1	1
	Honduras				2			2
	Jamaica						1	1
	Mexico			2	1		3	6
	Peru			2	2		1	5
	Venezuela						2	2
	EUROPE	Austria		1	1			
Belarus					1			1
Belgium			1	1		2		4
Bulgaria		2		1	2		2	7
Cyprus				1				1
Czech					1		1	2
Estonia					1			1
Finland					1			1

Classification	Countries & Regions	Under graduates	Auditors	Graduates			Research Students etc*	Total		
				Master's Course	Doctoral Course	Auditors				
EUROPE	France			5	1	7	7	2	22	
	Germany			9		3	2	3	17	
	Greece				1			1	2	
	Hungary	1			2	2		1	6	
	Italy					1			1	
	Kyrgyz					1			1	
	Netherlands			2			1	1	4	
	Norway						1		1	
	Poland				2	3		1	6	
	Portugal							1	1	
	Romania				1	1		1	3	
	Russia				1	8		4	13	
	Serbia and Montenegro	1				1			2	
	Slovakia					1			1	
	Spain					3			3	
	Sweden			3		1		1	5	
	Switzerland			4		1		1	6	
	Ukraine	1			1			2	4	
	U.K.				4	2		4	10	
	Uzbekistan							1	1	
OCEANIA	Australia			1	2			1	4	
	New Zealand					2			2	
MIDDLE EAST	Bahrain						1		1	
	Iran				1	6			7	
	Israel				1	7		2	10	
	Jordan							1	1	
	Lebanon						1		1	
	Syria				1				1	
	Turkey				2	3			5	
AFRICA	Egypt					8		1	9	
	Ethiopia				1			1	2	
	Ghana					1			1	
	Kenya				3	2			5	
	Mali							1	1	
	Morocco							1	1	
	Nigeria				1				1	
	Sudan						2		1	3
	Tanzania						2			2
Zambia								1	1	
Total		145	37	282	543	23	206	1,236		

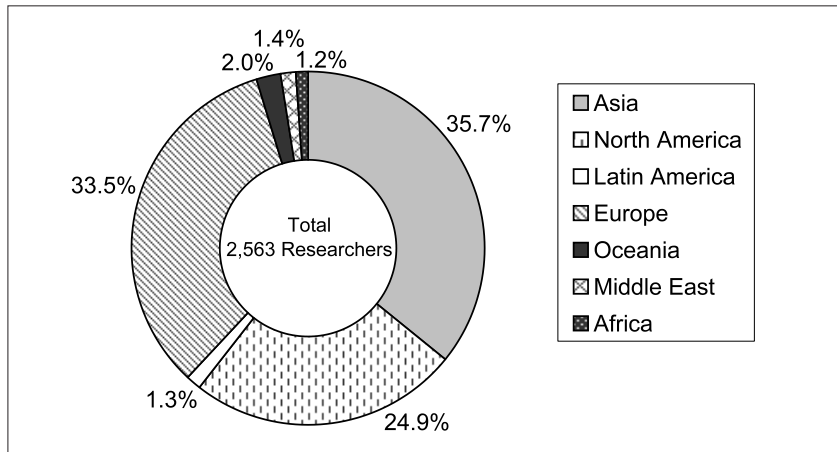
*includes Research Fellows

As of May 1, the number of students from abroad



EXCHANGE OF RESEARCHERS AND STUDENTS

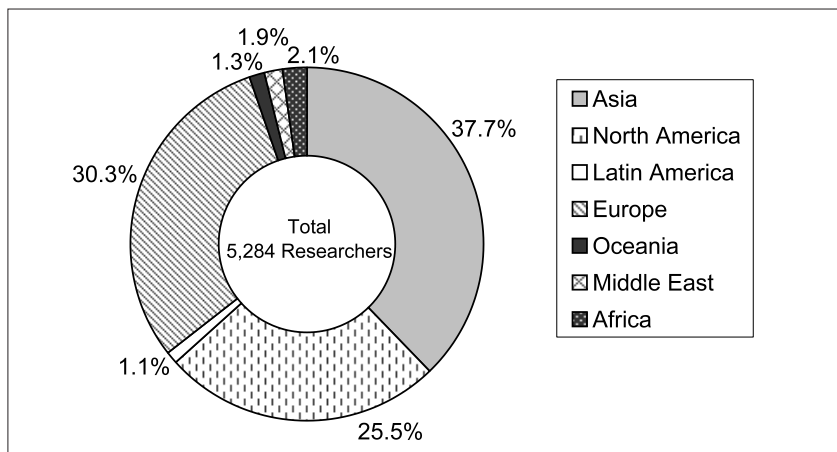
Researchers coming from Abroad (April 2005–March 2006)



Top 5 countries

U.S.A.	573
China, P.R.	286
Korea, R.	215
France	170
U.K.	164

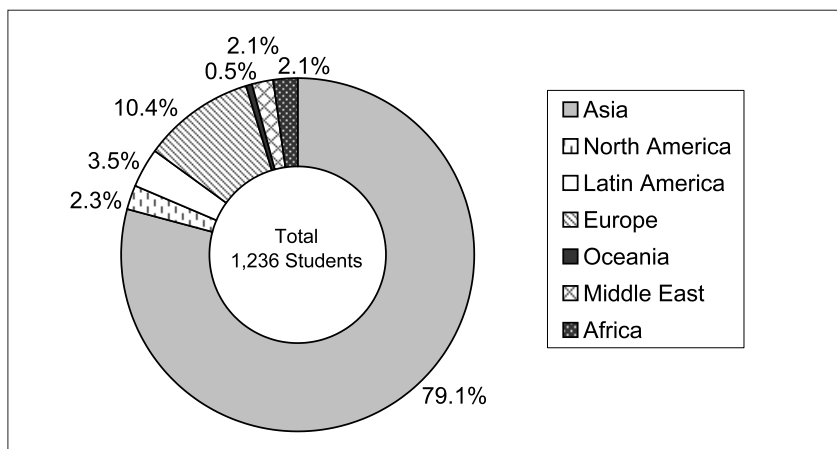
Researchers Going Abroad (April 2005–March 2006)



Top 5 countries

U.S.A.	1,220
China, P.R.	501
Korea, R.	419
France	294
Germany	270

Students from Abroad (As of May 1, 2006)



Top 5 countries

China, P.R.	484
Korea, R.	192
Taiwan	64
Thailand	48
Indonesia	37



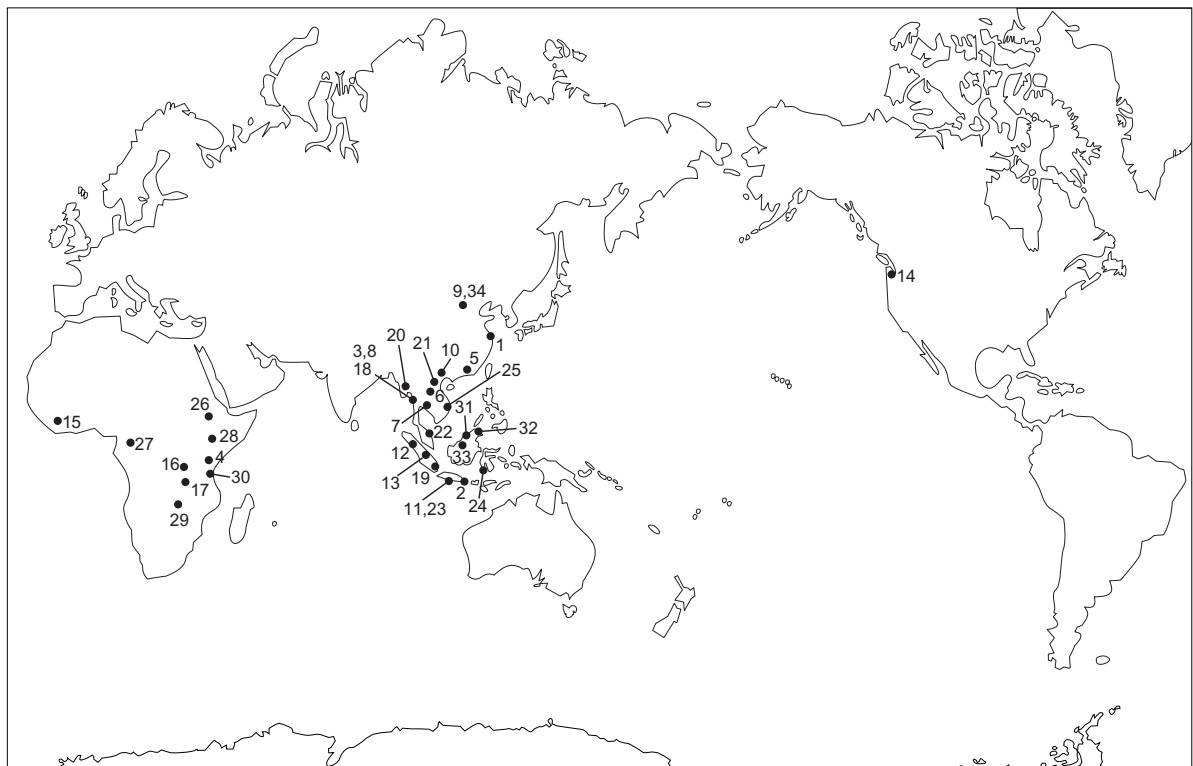
LIST OF OVERSEAS STATIONS

(As of October 1, 2006)

	Departments/Centers	Proper Name	Place/Country	Year Established
1	Graduate School of Economics	Branch Office of Shanghai Center for Economic Research	Shanghai, China, P.R.	2003
2	Graduate School of Science	KAGI21 Satellite Office at Institut Teknologi Bandung	Bandung, Indonesia	2003
3	Graduate School of Science	KAGI21 Satellite Office at Chulalongkorn University	Bangkok, Thailand	2004
4	Graduate School of Science	African Anthropological and Biological Field Research Center	Arusha, Tanzania	will open in December, 2006
5	Graduate School of Engineering	Cooperative Research and Education Center for Environmental Technology at Tsinghua University	Shenzhen, China, P.R.	2005
6	Graduate School of Agriculture	Modeling Agricultural Productivity in Northeast Thailand	Khon Kane, Thailand	1996
7	Graduate School of Energy Science/Institute of Advanced Energy/Research Institute for Sustainable Humanosphere	21COE Thai Research Station Collaborative Research Laboratory	Pathumthani, Thailand	2003
8	Graduate School of Informatics	21COE Bangkok Research Center	Bangkok, Thailand	2002
9	Graduate School of Informatics	21COE Beijing Research Center	Beijing, China, P.R.	2003
10	Graduate School of Global Environmental Studies	Contact Office of Research and Education of Graduate School of Global Environmental Studies	Hanoi, Vietnam	2005
11	Research Institute for Sustainable Humanosphere	RISH-RDUB Satellite Office	Bogor, Indonesia	2004
12	Research Institute for Sustainable Humanosphere	Equatorial Atmosphere Radar	Bukittinggi, Indonesia	2001
13	Research Institute for Sustainable Humanosphere	MHP Acacia Research Office	Sumatera, Indonesia	2005
14	Disaster Prevention Research Institute	Seattle Satellite Office	Seattle, USA	1996
15	Primate Research Institute	Bossou-Nimba Research Station	Bossou, Guinea	1976
16	Primate Research Institute	Rubondo Island Field Station	Rubond, Tanzania	2000
17	Primate Research Institute	Mahale N.P. Liaison Office	Mahale, Tanzania	1965
18	Center for Southeast Asian Studies	Bangkok Liaison Office	Bangkok, Thailand	1963
19	Center for Southeast Asian Studies	Jakarta Liaison Office	Jakarta, Indonesia	1970
20	Center for Southeast Asian Studies/Graduate School of Asian and African Area Studies	Yangon Field Station	Yangon, Myanmar	2003
21	Center for Southeast Asian Studies/Graduate School of Asian and African Area Studies	Vientiane Field Station	Vientiane, Laos	2003
22	Center for Southeast Asian Studies/Graduate School of Asian and African Area Studies	Bangi Field Station	Bangi, Malaysia	2003
23	Center for Southeast Asian Studies/Graduate School of Asian and African Area Studies	Bogor Field Station	Bogor, Indonesia	2004



	Departments/Centers	Proper Name	Place/Country	Year Established
24	Center for Southeast Asian Studies/Graduate School of Asian and African Area Studies	Makassar Field Station	Makassar, Indonesia	2003
25	Center for Southeast Asian Studies/Graduate School of Asian and African Area Studies	Vietnam Field Station	Nha Trang, Vietnam	2003
26	Graduate School of Asian and African Area Studies	Ethiopia Field Station	Addis Ababa, Ethiopia	2003
27	Graduate School of Asian and African Area Studies	Cameroon Field Station	Ndongo Village, Cameroon	2003
28	Graduate School of Asian and African Area Studies	Kenya Field Station	Nairobi, Kenya	2003
29	Graduate School of Asian and African Area Studies	Zambia Field Station	Lusaka, Zambia	2003
30	Graduate School of Asian and African Area Studies	Tanzania Field Station	Dar es Salaam, Tanzania	2003
31	Center for Ecological Research	Japanese Research-Team Laboratory, Kinabalu Park Headquarters	Kota Kinabalu, Malaysia	1995
32	Center for Ecological Research	Japanese Research-Team Laboratory, Deramakot Forest Reserve	Sandakan, Malaysia	2003
33	Center for Ecological Research	Field Station for Tropical Forest and Biodiversity Studies in Lambir Hills National Park	Miri, Malaysia	1992
34	International Innovation Center	Kyoto University Liaison Office at Tsinghua University	Beijing, China P.R.	2006



UNIVERSITY FACILITIES

INTERNATIONAL HOUSES

Kyoto University, in order to contribute to the promotion of international research and educational exchanges, has established "International Houses" as housing facilities for foreign students and researchers.

These International Houses, however, are not simply housing facilities for foreigners; they are also serving as sites for interaction between the foreign students/researchers, university associates and the people of Kyoto.

There are three International Houses in our university; in Shugakuin, Uji, and Ohbaku.

KYOTO UNIVERSITY LIBRARY

The Kyoto University Library was established more than 100 years ago in 1899. The number of books and periodicals has increased year by year, and now numbers 870,000 books and 23,900 periodicals. In addition to the regular types of books and periodicals, it has acquired new publications to keep up with various changes both in academic fields and University organizations, such as e-journals, data bases, audiovisual materials (available in the Media Commons), and others. It also offers various library services through the Internet.

(All libraries on campus contain a total of 6,147,000 books and 89,000 periodicals)

UNIVERSITY HOSPITAL

Kyoto University Hospital was established in 1899, as a part of Kyoto Imperial University. With the incorporation of the Chest Diseases Research Institute in April of 1998, the University Hospital became a general hospital with multiple departments offering top-level medical services to the people in and around Kyoto. The current number of beds is 1182, and as of 2005, inpatients are about 362,000 and outpatients about 588,000.

In April 2001, the Translational Research Center was established for fundamental transplant research for humans. In January 2003, the Post Graduate Clinical Education Center was established for medical trainees to broaden their understanding of primary medical care, and to acquire and develop a holistic attitude toward the treatment of patients.

In April 2005, the Post Graduate Clinical Education Center became as the Integrated Clinical Education Center, and trains and educates not only clinicians and dental practitioners but also nurses, pharmacists and other para-medics.

The hospital began its program of Living-donor liver transplantations in 1990. As of June 2004, Living-donor liver transplantations reached 1,000 cases, setting a world record. About 40% of all the transplantation operations in Japan have been carried out here, making Kyoto University Hospital a world leader in this field.



JAPANESE NOBEL PRIZE LAUREATES

Year conferred	Field	Name	Alma Mater	Position when the prize was conferred
2002	Chemistry	Kouichi Tanaka	Tohoku University	Shimadzu Corporation
	Physics	Masatoshi Koshiha	The University of Tokyo	Emeritus Professor, the University of Tokyo
2001	Chemistry	Ryoji Noyori	Kyoto University	Professor, Nagoya University
2000	Chemistry	Hideki Shirakawa	Tokyo Institute of Technology	Emeritus Professor, University of Tsukuba
1994	Literature	Kenzaburo Oe	The University of Tokyo	Novelist
1987	Physiology-Medicine	Susumu Tonegawa	Kyoto University	Professor, Massachusetts Institute of Technology
1981	Chemistry	Kenichi Fukui	Kyoto University	Professor, Kyoto University
1974	Peace	Eisaku Sato	The University of Tokyo	Former Prime Minister
1973	Physics	Reona Ezaki	The 3rd Higher School/ The University of Tokyo	Senior Researcher, IBM Watson Research Center
1968	Literature	Yasunari Kawabata	The University of Tokyo	Novelist
1965	Physics	Shin-itiro Tomonaga	Kyoto University	Professor, Tokyo University of Education
1949	Physics	Hideki Yukawa	Kyoto University	Professor, Kyoto University

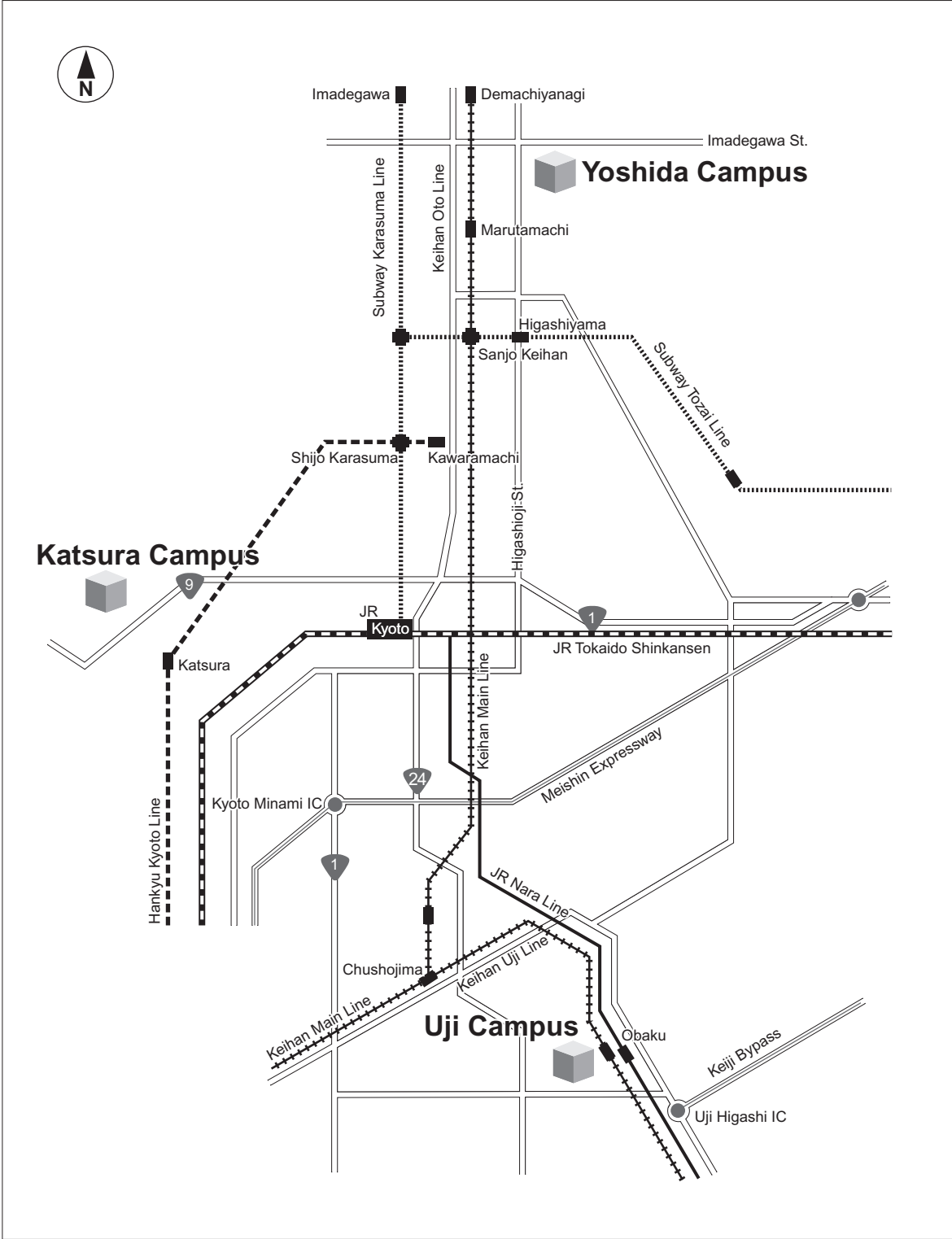
Note: Dr. Yukawa of Kyoto University was the first recipient of the Nobel Prize in Japan.

As of June 2006, out of the 12 Nobel Prize laureates, 5 are graduates from Kyoto University.

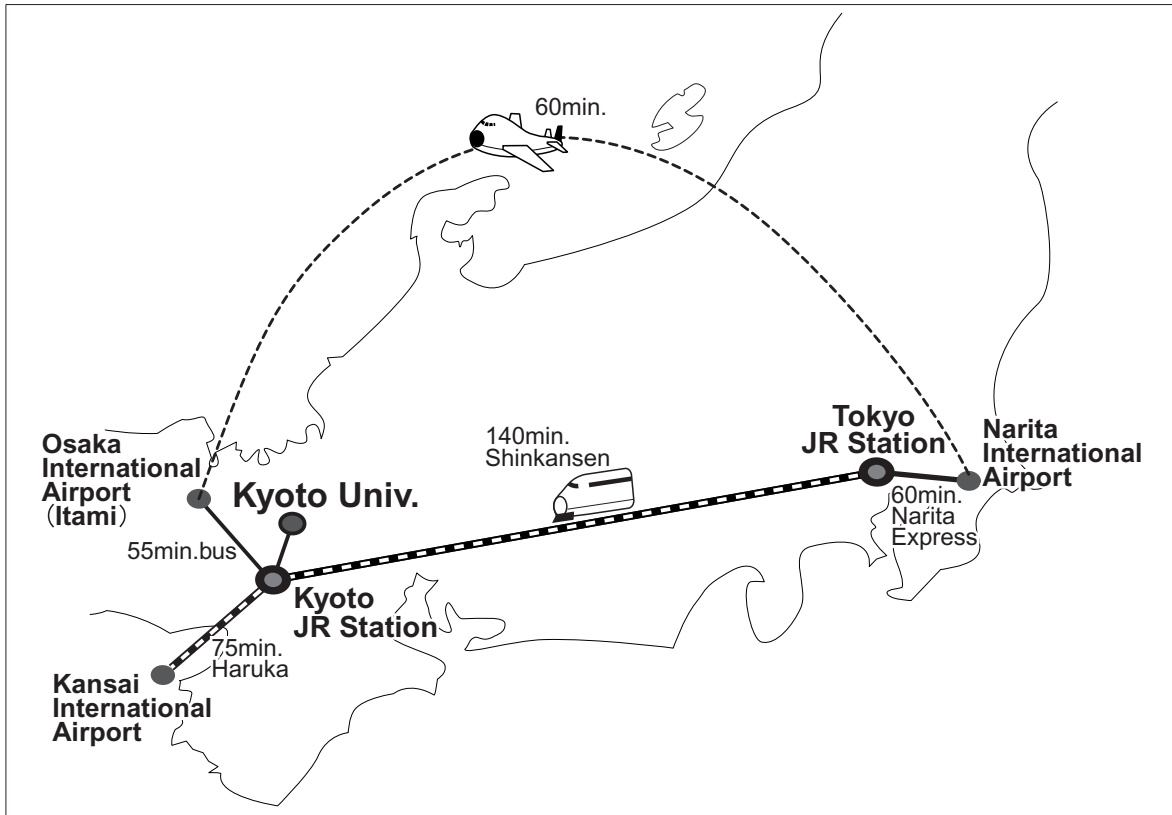
KYOTO UNIVERSITY INTERNATIONAL SYMPOSIA

	Date	Place	Title	Remarks
1	Jan. 13, 2001	Santa Clara, CA USA	Network and Media Computing	
2	Nov. 28, 2001 Nov. 30, 2001	London, Edinburgh, UK	The Changes in the Japanese Economy Facing the New Century	Jointly organized with the University of London and the University of Edinburgh
3	Sept. 3-4, 2002	Montreal CANADA	Post-Petrofuels in the 21st Century – Prospects in the Future of Biomass Energy	
4	Dec. 6-7, 2003	Ann Arbor, MI USA	Self, Cognition, and Emotion	Jointly organized with the University of Michigan
5	Jan. 27-29, 2005	SINGAPORE	Regulation of Cell Fate and Cell Function	Jointly organized with the National University of Singapore
6	Oct. 8-9, 2005	Beijing CHINA, P.R.	Plant Sciences in Japan and China – from Genomics to Breeding	Jointly organized with Chinese Academy of Agricultural Sciences
7	Nov. 23-24, 2005	Bangkok THAILAND	Coexistence with Nature in a 'Glocalizing' World – Field Science Perspectives	Jointly organized with Chulalongkorn University, Thammasat University, and Kasetsart University
8	Nov. 23-25, 2006	Bangkok THAILAND	Towards Harmonious Coexistence within Human and Ecological Community on this Planet	

CAMPUS MAP



HOW TO REACH KYOTO UNIVERSITY FROM AIRPORTS



From Kansai International Airport

Take the Airport Express “Haruka” train to JR Kyoto Station (75 min., ¥3,500). To reach Kyoto University (Yoshida Campus), take city bus No. 206 and get off at Kyodai-seimon mae bus stop (40 min. ¥220).
For further information on Kansai International Airport:
<http://www.kansai-airport.or.jp/english/access/index.htm>

From Narita International Airport

Take the “Narita Express” train (60 min., ¥3,000) to JR Tokyo Station. Take the “Shinkansen” (bullet train) to JR Kyoto Station, (140 min., ¥14,000). To reach Kyoto University (Yoshida Campus), take city bus No. 206 and get off at Kyodai-seimon mae bus stop (40 min. ¥220).
For further information on Narita International Airport:
http://www.narita-airport.or.jp/airport_e/

For further information on transportation to Kyoto University:
http://www.kyoto-u.ac.jp/english/eaccess/e07_acce/getting_2.htm





CONTACT

For Researchers

International Affairs Division

Yoshida-Honmachi, Sakyo-ku, Kyoto 606-8501

Tel: +81-75-753-2047

Fax: +81-75-753-2042

E-mail: koryu52@mail.adm.kyoto-u.ac.jp

URL: <http://www.kyoto-u.ac.jp>

For Students

Foreign Student Division

Yoshida-Honmachi, Sakyo-ku, Kyoto 606-8501

Tel: +81-75-753-2543

Fax: +81-75-753-2562

E-mail: ryugaku78@mail.adm.kyoto-u.ac.jp

URL: <http://www.kyoto-u.ac.jp>